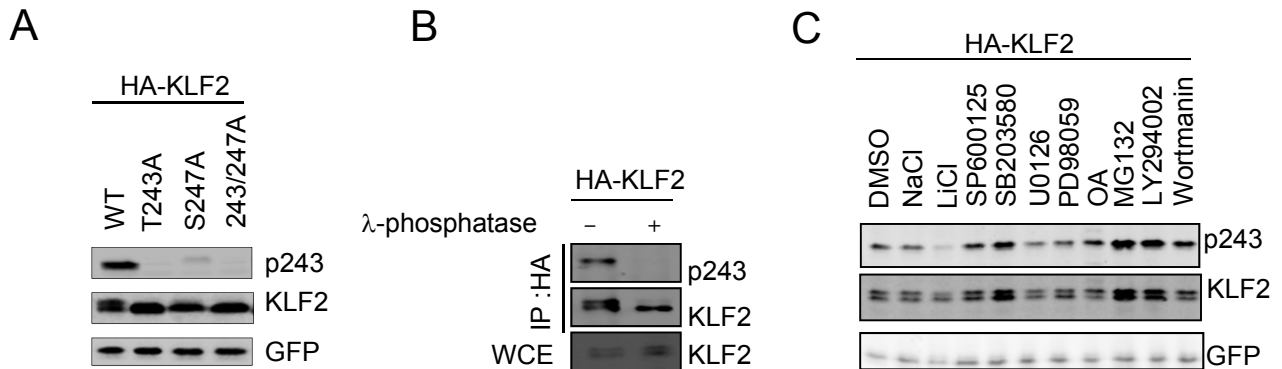


Figure. S6



D

Protein Information

Reference IPI00121423
 Gene Symbol Klf2
 Annotation Krueppel-like factor 2
 Phosphorylated Peptides 2
 Redundant Phospho-Peptides 2
 Redundant Matches IPI00121423 [currently viewing]
 IPI00896717 [site view]

Sequence
 MALSEPI LPS FATFASPCER GLQERWPRNE PEAGGTDEDL NNVLDFILSM
 GLDGLGAEN PEP PPQPPPP AFYYPEPGAP PPYSIPADSL GTELLRPDL D
 PPQGPALHGR FLLAPPGR LV KAEPPEVDGG GYGCAPGLAH GPRGLKLEGA
 PGATGACMRG PAGRPPPPPD TPPLSPDGPL RIPASGPRNP FPPFPGPGPS
 FGGPGPALHY GPPAPGAFGL FEDAAAAAAA LGLAPPATRG LLTPSSPLE
 LLEAKPKRGR RSWPRKRAAT HTCSYTNCGK TYTKSSHLKA HLRTHTGKQP
 YHCNWECCGW KFARSDLTR HYRKHTGHRP FQCHLCDRAF SRSDHLALHM
 KRHM

Phosphorylation Sites Detail

Site Position: 171
 Classification: Proline-Directed
 Peptide: GPAGRPPPPDT*PPLS*PDGPLR
 Motif Peptide: PPPPPDT*PPLSPD
 AScore: 1000.00
 Precision: 0.99
 Entropy: 1.996
 MS/MS Spectrum: [Link](#)
 Sequest outfile: [Link](#)

Tissue Spectral Count: Brownfat: 1
 Heart: 1
 Kidney: 2
 Spleen: 5
 Matching Proteins: IPI00121423 [currently viewing]
 IPI00896717 [site view]

Site Position: 243
 Classification: Proline-Directed
 Peptide: GLLT*PPS*SPELLEAKPK
 Motif Peptide: ATRGLLT*PPSSPL
 AScore: 54.60
 Precision: 0.99
 Entropy: 2.456
 MS/MS Spectrum: [Link](#)
 Sequest outfile: [Link](#)

Tissue Spectral Count: Brownfat: 4
 Kidney: 3
 Liver: 1
 Lung: 2
 Spleen: 6
 Testis: 2
 Matching Proteins: IPI00121423 [currently viewing]
 IPI00896717 [site view]

Fig. S6. Phosphorylation of KLF2 at T171 and T243. (A). The anti-phospho-T243 KLF2 antibody recognized wild-type but not T243 mutated KLF2. Wild-type or mutant KLF2 was transfected into 293T cells and their expression was analyzed by Western blotting using both anti-phospho-T243 antibody and HA antibody. p243, phosphorylated T243 KLF2. (B). HA-KLF2 was expressed in 293T cells, immunoprecipitated and treated with or without λ protein phosphatase. (C). Screening of various kinase inhibitors for T243 phosphorylation. KLF2 was expressed in 293T cells. Cells were treated with kinase inhibitors as indicated for 6 hours. KLF2 was detected using an anti-phospho-T243 antibody or HA antibody. (D). The data from phosphomouse database indicated that KLF2 is phosphorylated at T171 and T243 in multiple mouse tissues. (<https://gygi.med.harvard.edu/phosphomouse>).