

Figure. S8

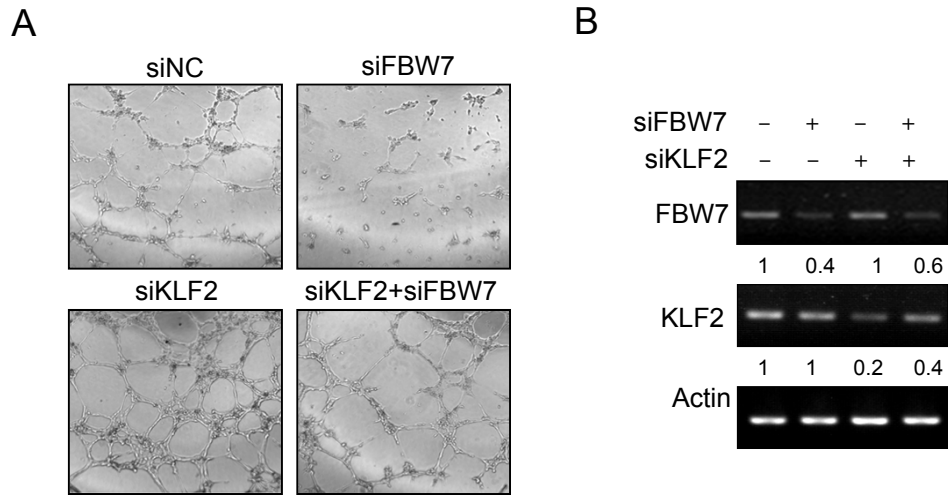


Fig. S8. KLF2 knockdown reduced the inhibitory effect of FBW7 on the tube formation. (A). KLF2 knockdown reduced the inhibitory effect of FBW7 on the tube formation. HUVECs transfected with siRNAs as indicated were placed in plates coated with Matrigel and the tubular structures were analyzed. (B). The RT-PCR indicated the FBW7 and KLF2 knockdown efficiency. The relative expression of FBW7 and KLF2 were normalized against the band intensity of corresponding to β -actin. The relative densitometric values are shown below the corresponding images.