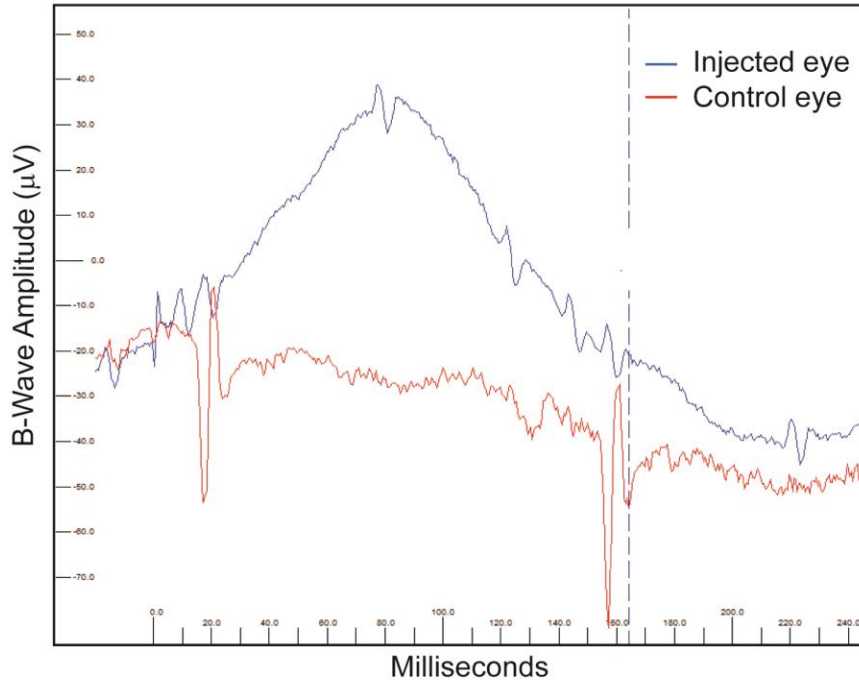
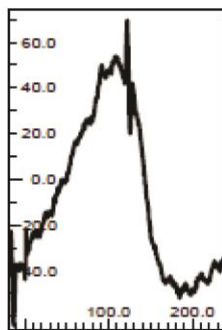
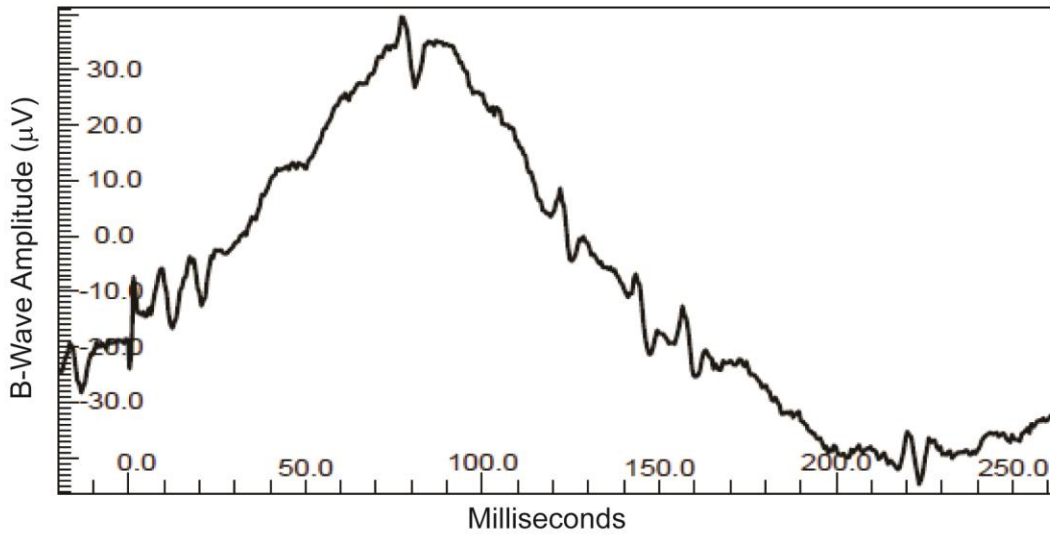


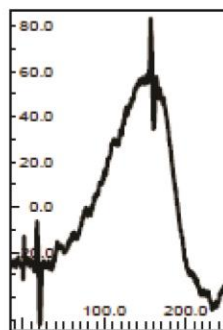
A



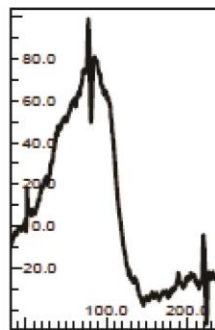
B



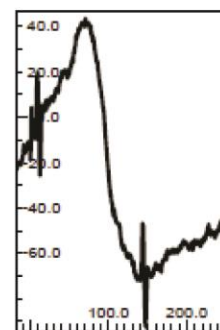
Sample 1



Sample 2



Sample 3



Sample 4

Supplementary information, Figure S6 Transplanted retinal stem cell-derived photoreceptors restore visual function in *rd1* mouse eye.

(A) A representative waveform from injected eye (blue) and control eye (red) presented with light flashes of 3000 mcd.s/m² 4 weeks after transplantation. (B) The waveform represents the average signal recorded after four independent flashes of light, separated by one minute (Samples 1-4).