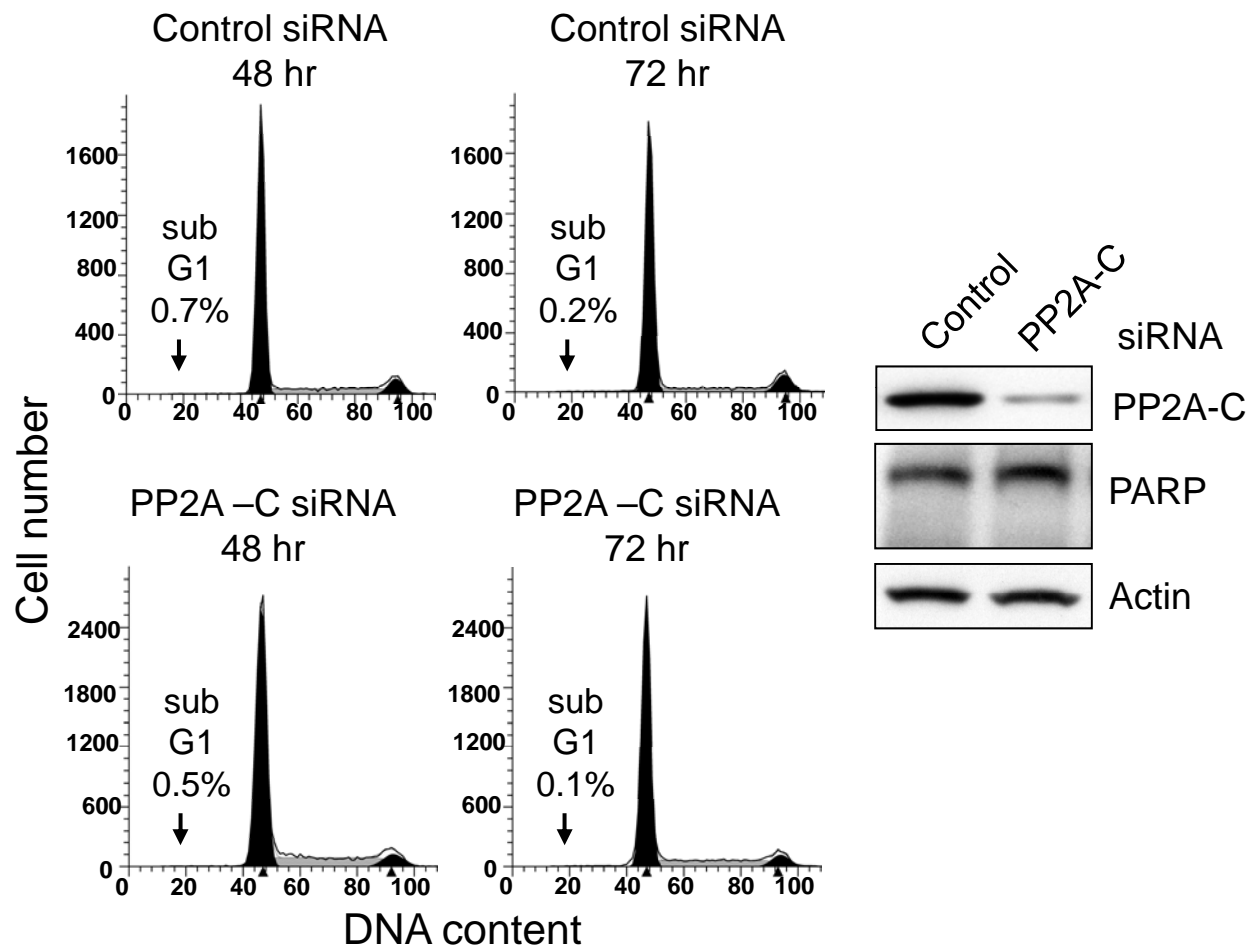


Supplementary Figure 1



Supplementary Figure 2

SUPPLEMENTARY FIGURE LEGENDS

Figure 1 The effect of PP2A inhibition on mitotic cells in MCF-7 cells following IR exposure. MCF-7 cells were exposed 20-Gy IR in the presence or absence of 0.5 μ M OA and followed by 2hr incubation. The cells were fixed, stained with both PI and anti-phospho-Histone H3 antibody, and analyzed for mitotic cells by FACS, which contain both 4N-DNA-content and phospho-Histone H3. The results depict the percentage of mitotic cells and are shown as mean \pm s.d. of triplicate samples.

Figure 2 Knockdown of PP2A catalytic subunit by siRNA does not induce apoptosis in MCF-7 breast cancer cells. *Left panel:* Cells were transfected with non-targeting control siRNA (*Control siRNA*) or siRNA targeting PP2A catalytic subunit $\text{Ca/C}\beta$ (*PP2A-C siRNA*) for the indicated times and analyzed for DNA content by FACS. *Right panel:* Cells were transfected with non-targeting control siRNA (*Control*) or siRNA targeting PP2A-Ca/C β (*PP2A-C*) for 3 days and analyzed for levels of PP2A-C, Poly ADP-ribose polymerase (PARP) and Actin by immunoblotting.