

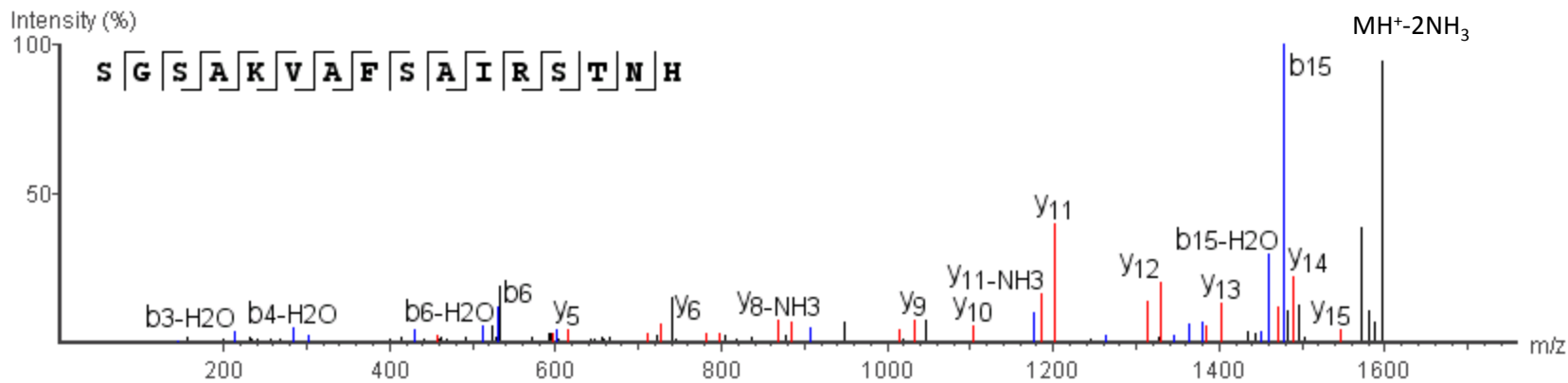
(1) Sequence assignments of peptides reported in table 1

R.SGSAKVAFSAIRSTNH.E

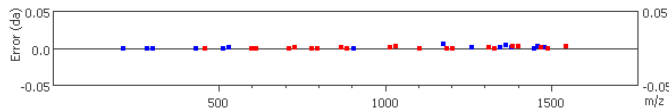
m/z=544.9529

Error=-0.7ppm

Z=3

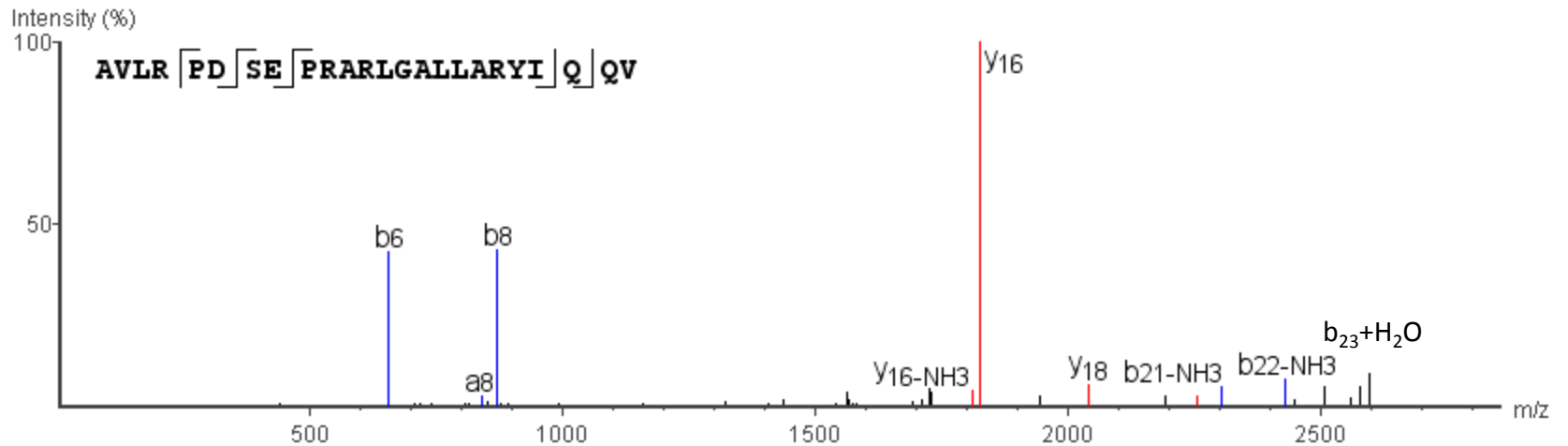


#	Inmonium	b	b-H2O	b-NH3	a	a-H2O	a-NH3	c	c-H2O	c-NH3	c-H	b(2+)	a(2+)	c(2+)	Seq	x	x-H2O	x-NH3	y	y-H2O	y-NH3	x(2+)	y(2+)	#	
1	60.0449	88.0399	70.0293	71.0129	60.0449	42.0343	43.0179	105.0669	87.0563	88.0399	104.0590	44.5199	30.5224	53.0334	S										16
2	30.0343	145.0613	127.0508	128.0343	117.0663	99.0558	100.0393	162.0883	144.0778	145.0613	161.0805	73.0307	59.0332	81.5442	G	1571.7925	1553.7819	1554.7655	1545.8093	1527.8026	1528.7861	786.3962	773.4066	15	
3	60.0449	232.0933	214.0821	215.0663	204.0983	186.0878	187.0713	249.1203	231.1098	232.0933	248.1125	116.5467	102.5492	125.0602	S	1514.7711	1496.7605	1497.7441	1488.7910	1470.7784	1471.7648	757.8856	744.8959	14	
4	44.0499	303.1300	285.1196	286.1035	275.1354	257.1249	258.1085	320.1574	302.1469	303.1300	319.1496	152.0652	138.0677	160.5787	A	1427.7390	1409.7284	1410.7120	1401.7560	1383.7491	1384.7292	714.3695	701.3798	13	
5	101.1078	431.2246	413.2148	414.1984	403.2304	385.2198	386.2034	448.2524	430.2419	431.2246	447.2446	216.1127	202.1152	224.6262	K	1356.7019	1338.6913	1339.6749	1330.7212	1312.7120	1313.6926	678.8510	665.8613	12	
6	72.0812	530.2908	512.2822	513.2668	502.2988	484.2883	485.2719	547.3209	529.3103	530.2908	546.3130	265.6469	251.6494	274.1604	V	1228.6069	1210.5963	1211.5800	1202.6262	1184.6171	1185.5995	614.8035	601.8138	11	
7	44.0499	601.3296	583.3204	584.3040	573.3359	555.3254	556.3090	618.3580	600.3474	601.3296	617.3501	301.1655	287.1680	309.6790	A	1129.5386	1111.5280	1112.5116	1103.5577	1085.5487	1086.5322	565.2693	552.2796	10	
8	120.0812	748.3993	730.3887	731.3723	720.4043	702.3937	703.3773	765.4263	747.4158	748.3993	764.4185	374.6996	360.7021	383.2132	F	1058.5015	1040.4908	1041.4745	1032.5187	1014.5115	1015.4935	529.7507	516.7610	9	
9	60.0449	835.4313	817.4208	818.4044	807.4363	789.4258	790.4094	852.4584	834.4478	835.4313	851.4505	418.2157	404.2182	426.7292	S	911.4330	893.4225	894.4060	885.4539	867.4431	868.4251	456.2165	443.2268	8	
10	44.0499	906.4673	888.4579	889.4415	878.4734	860.4629	861.4465	923.4955	905.4849	906.4673	922.4876	453.7342	439.7367	462.2477	A	824.4010	806.3904	807.3740	798.4214	780.4111	781.3934	412.7005	399.7108	7	
11	86.0969	1019.5525	1001.5419	1002.5255	991.5575	973.5469	974.5305	1036.5795	1018.5690	1019.5525	1035.5717	510.2762	496.2787	518.7897	I	753.3639	735.3533	736.3369	727.3827	709.3740	710.3576	377.1819	364.1923	6	
12	129.1139	1175.6465	1157.6431	1158.6266	1147.6586	1129.6481	1130.6316	1192.6805	1174.6700	1175.6465	1191.6727	588.3268	574.3293	596.8403	R	640.2798	622.2693	623.2528	614.3002	596.2899	597.2742	320.6399	307.6502	5	
13	60.0449	1262.6841	1244.6752	1245.6587	1234.6907	1216.6802	1217.6637	1279.7126	1261.7021	1262.6841	1278.7048	631.8428	617.8453	640.3563	S	484.1787	466.1682	467.1517	458.1992	440.1888	441.1724	242.5894	229.5997	4	
14	74.0605	1363.7288	1345.7205	1346.7064	1335.7384	1317.7279	1318.7114	1380.7577	1362.7499	1363.7288	1379.7526	682.3667	668.3692	690.8802	T	397.1467	379.1362	380.1197	371.1674	353.1568	354.1404	199.0734	186.0837	3	
15	87.0558	1477.7736	1459.7625	1460.7493	1449.7799	1431.7708	1432.7543	1494.8032	1476.7927	1477.7736	1493.7954	739.3881	725.3906	747.9016	N	296.0990	278.0885	279.0720	270.1197	252.1091	253.0927	148.5495	135.5598	2	
16	110.0717														H	182.0561	164.0455	165.0291	156.0768	138.0662	139.0497	91.5280	78.5384	1	

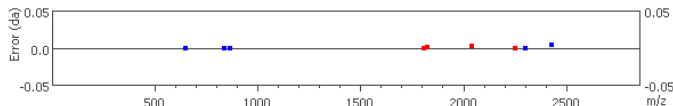


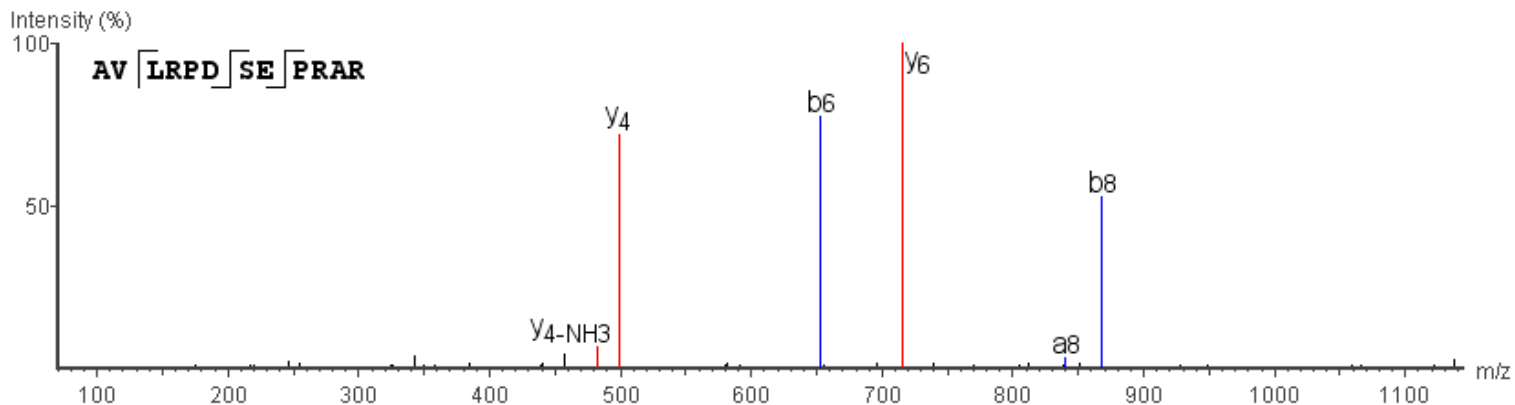
R.AVLRPDSEPRARLGALLARYIQV.R

Z=4

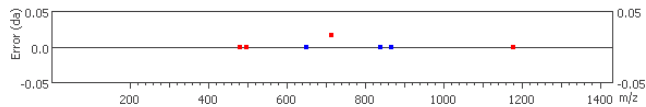


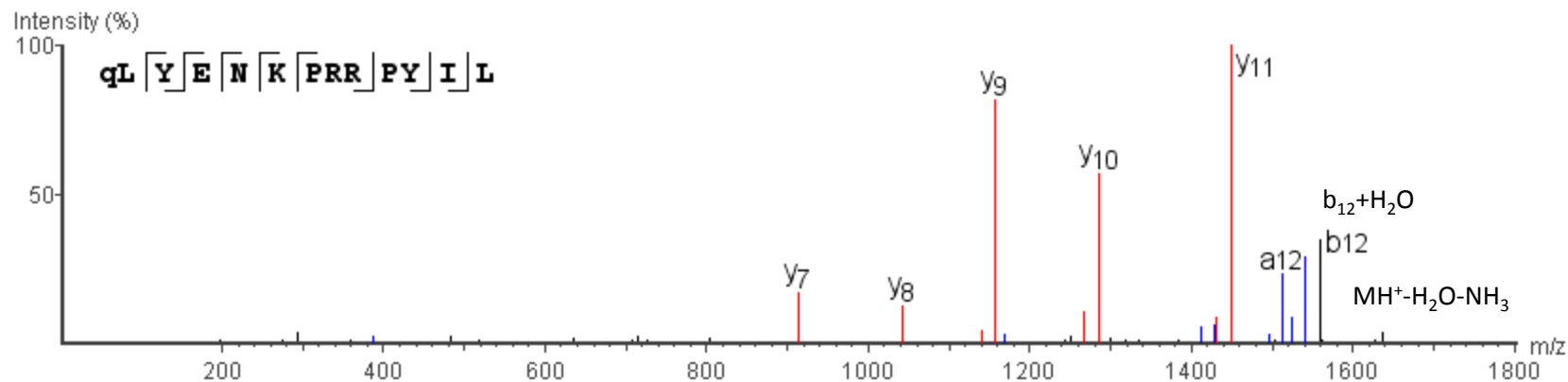
#	Inmonium	b	b-H2O	b-NH3	a	a-H2O	a-NH3	c	c-H2O	c-NH3	c-H	b(2+)	a(2+)	c(2+)	Seq	x	x-H2O	x-NH3	y	y-H2O	y-NH3	x(2+)	y(2+)	#	
1	44.0499	72.0449	54.0344	55.0179	44.0499	26.0394	27.0229	89.0719	71.0614	72.0449	88.0641	36.5225	22.5250	45.0360	A										24
2	72.0812	171.1134	153.1028	154.0863	143.1183	125.1078	126.0914	188.1404	170.1298	171.1134	187.1325	86.0567	72.0592	94.5702	V	2647.4790	2629.4685	2630.4521	2621.4998	2603.4893	2604.4727	1324.2395	1311.2499	23	
3	86.0969	284.1974	266.1868	267.1704	256.2024	238.1918	239.1754	301.2244	283.2138	284.1974	300.2166	142.5987	128.6012	151.1122	L	2548.4106	2530.4001	2531.3838	2522.4314	2504.4209	2505.4043	1274.7053	1261.7157	22	
4	129.1139	440.2985	422.2879	423.2715	412.3035	394.2929	395.2765	457.3255	439.3149	440.2985	456.3177	220.6492	206.6517	229.1628	R	2435.3264	2417.3159	2418.2996	2409.3472	2391.3367	2392.3201	1218.1632	1205.1736	21	
5	70.0656	537.3513	519.3407	520.3243	509.3563	491.3457	492.3293	554.3783	536.3677	537.3513	553.3704	269.1756	255.1781	277.6891	P	2279.2253	2261.2148	2262.1985	2253.2454	2235.2356	2236.2190	1140.1127	1127.1230	20	
6	88.0398	652.3768	634.3676	635.3512	624.3832	606.3726	607.3562	669.4052	651.3947	652.3768	668.3973	326.6891	312.6916	335.2026	D	2182.1726	2164.1621	2165.1458	2156.1934	2138.1829	2139.1663	1091.5863	1078.5967	19	
7	60.0449	739.4102	721.3997	722.3832	711.4152	693.4047	694.3882	756.4373	738.4267	739.4102	755.4294	370.2051	356.2076	378.7186	S	2067.1458	2049.1353	2050.1187	2041.1628	2023.1559	2024.1394	1034.0729	1021.0832	18	
8	102.0554	868.4517	850.4423	851.4258	840.4570	822.4473	823.4308	885.4799	867.4693	868.4517	884.4720	434.7264	420.7289	443.2399	E	1980.1138	1962.1031	1963.0868	1954.1344	1936.1239	1937.1074	990.5569	977.5672	17	
9	70.0656	965.5056	947.4950	948.4786	937.5106	919.5000	920.4836	982.5326	964.5220	965.5056	981.5247	483.2528	469.2553	491.7663	P	1851.0712	1833.0605	1834.0442	1825.0891	1807.0813	1808.0646	926.0356	913.0459	16	
10	129.1139	1121.6067	1103.5962	1104.5797	1093.6117	1075.6012	1076.5847	1138.6337	1120.6232	1121.6067	1137.6259	561.3033	547.3058	569.8168	R	1754.0184	1736.0078	1736.9915	1728.0391	1710.0286	1711.0121	877.5092	864.5195	15	
11	44.0499	1192.6438	1174.6333	1175.6168	1164.6488	1146.6383	1147.6218	1209.6708	1191.6603	1192.6438	1208.6630	596.8219	582.8244	605.3354	A	1597.9174	1579.9067	1580.8904	1571.9380	1553.9275	1554.9110	799.4587	786.4690	14	
12	129.1139	1348.7449	1330.7344	1331.7179	1320.7499	1302.7394	1303.7229	1365.7719	1347.7614	1348.7449	1364.7640	674.8724	660.8749	683.3859	R	1526.8802	1508.8696	1509.8533	1500.9009	1482.8904	1483.8739	763.9401	750.9504	13	
13	86.0969	1461.8290	1443.8185	1444.8020	1433.8340	1415.8235	1416.8070	1478.8560	1460.8455	1461.8290	1477.8481	731.4145	717.4170	739.9280	L	1370.7792	1352.7686	1353.7522	1344.7998	1326.7893	1327.7728	685.8896	672.8999	12	
14	30.0343	1518.8505	1500.8400	1501.8235	1490.8555	1472.8450	1473.8285	1535.8774	1517.8669	1518.8505	1534.8696	759.9252	745.9277	768.4387	G	1257.6951	1239.6844	1240.6681	1231.7157	1213.7052	1214.6887	629.3475	616.3578	11	
15	44.0499	1589.8876	1571.8771	1572.8606	1561.8926	1543.8821	1544.8656	1606.9146	1588.9041	1589.8876	1605.9067	795.4438	781.4463	803.9573	A	1200.6736	1182.6630	1183.6466	1174.6942	1156.6837	1157.6672	600.8368	587.8471	10	
16	86.0969	1702.9716	1684.9611	1685.9446	1674.9766	1656.9661	1657.9496	1719.9985	1701.9880	1702.9716	1718.9907	851.9858	837.9883	860.4993	L	1129.6365	1111.6259	1112.6095	1103.6571	1085.6466	1086.6301	565.3182	552.3286	9	
17	86.0969	1816.0557	1798.0452	1799.0287	1788.0607	1770.0502	1771.0337	1833.0826	1815.0721	1816.0557	1832.0748	908.5278	894.5303	917.0413	L	1016.5524	998.5419	999.5254	990.5731	972.5625	973.5461	508.7762	495.7865	8	
18	44.0499	1887.0928	1869.0823	1870.0658	1859.0978	1841.0873	1842.0708	1904.1198	1886.1093	1887.0928	1903.1119	944.0464	930.0489	952.5599	A	903.4684	885.4578	886.4414	877.4890	859.4785	860.4620	452.2342	439.2445	7	
19	129.1139	2043.1938	2025.1833	2026.1669	2015.1989	1997.1884	1998.1719	2060.2209	2042.2103	2043.1938	2059.2131	1022.0969	1008.0994	1030.6105	R	832.4313	814.4207	815.4043	806.4519	788.4413	789.4249	416.7156	403.7260	6	
20	136.0761	2206.2571	2188.2466	2189.2300	2178.2622	2160.2515	2161.2351	2223.2842	2205.2734	2206.2571	2222.2764	1103.6285	1089.6311	1112.1421	Y	676.3301	658.3196	659.3031	650.3508	632.3402	633.3238	338.6651	325.6754	5	
21	86.0969	2319.3413	2301.3308	2302.3155	2291.3464	2273.3357	2274.3193	2336.3684	2318.3577	2319.3413	2335.3606	1160.1707	1146.1732	1168.6842	I	513.2668	495.2563	496.2398	487.2874	469.2769	470.2605	257.1334	244.1437	4	
22	101.0714	2447.3999	2429.3894	2430.3667	2419.4050	2401.3943	2402.3779	2464.4270	2446.4163	2447.3999	2463.4192	1224.2000	1210.2025	1232.7135	Q	400.1828	382.1722	383.1558	374.2034	356.1928	357.1764	200.5914	187.6017	3	
23	101.0714	2575.4585	2557.4480	2558.4314	2547.4636	2529.4529	2530.4365	2592.4856	2574.4749	2575.4585	2591.4778	1288.2292	1274.2318	1296.7428	Q	272.1242	254.1136	255.0972	246.1448	228.1343	229.1178	136.5621	123.5724	2	
24	72.0812														V	144.0656	126.0550	127.0386	118.0863	100.0757	101.0592	72.5328	59.5431	1	



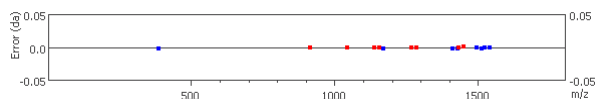


#	Immonium	b	b-H2O	b-NH3	a	a-H2O	a-NH3	c	c-H2O	c-NH3	c-H	b (2+)	a (2+)	c (2+)	Seq	x	x-H2O	x-NH3	y	y-H2O	y-NH3	x (2+)	y (2+)	#	
1	44.0499	72.0449	54.0344	55.0179	44.0499	26.0394	27.0229	89.0719	71.0614	72.0449	88.0641	36.5225	22.5250	45.0360	A										12
2	72.0812	171.1134	153.1028	154.0863	143.1183	125.1078	126.0914	188.1404	170.1298	171.1134	187.1325	86.0567	72.0592	94.5702	V	1321.6971	1303.6865	1304.6702	1295.7178	1277.7073	1278.6908	661.3486	648.3589	11	
3	86.0969	284.1974	266.1868	267.1704	256.2024	238.1918	239.1754	301.2244	283.2138	284.1974	300.2166	142.5987	128.6012	151.1122	L	1222.6288	1204.6182	1205.6018	1196.6494	1178.6389	1179.6219	611.8144	598.8247	10	
4	129.1139	440.2985	422.2879	423.2715	412.3035	394.2929	395.2765	457.3255	439.3149	440.2985	456.3177	220.6492	206.6517	229.1628	R	1109.5447	1091.5341	1092.5177	1083.5653	1065.5548	1066.5383	555.2723	542.2827	9	
5	70.0656	537.3513	519.3407	520.3243	509.3563	491.3457	492.3293	554.3783	536.3677	537.3513	553.3704	269.1756	255.1781	277.6891	P	953.4436	935.4330	936.4166	927.4642	909.4537	910.4373	477.2218	464.2321	8	
6	88.0398	652.3771	634.3676	635.3512	624.3832	606.3726	607.3562	669.4052	651.3947	652.3771	668.3973	326.6891	312.6916	335.2026	D	856.3908	838.3802	839.3638	830.4114	812.4009	813.3845	428.6954	415.7057	7	
7	60.0449	739.4102	721.3997	722.3832	711.4152	693.4047	694.3882	756.4373	738.4267	739.4102	755.4294	370.2051	356.2076	378.7186	S	741.3639	723.3533	724.3369	715.3663	697.3740	698.3575	371.1819	358.1923	6	
8	102.0554	868.4513	850.4423	851.4258	840.4570	822.4473	823.4308	885.4799	867.4693	868.4513	884.4720	434.7264	420.7289	443.2399	E	654.3318	636.3213	637.3048	628.3525	610.3419	611.3255	327.6659	314.6762	5	
9	70.0656	965.5056	947.4950	948.4786	937.5106	919.5000	920.4836	982.5326	964.5220	965.5056	981.5247	483.2528	469.2553	491.7663	P	525.2892	507.2787	508.2623	499.3095	481.2993	482.2818	263.1446	250.1550	4	
10	129.1139	1121.6067	1103.5962	1104.5797	1093.6117	1075.6012	1076.5847	1138.6337	1120.6232	1121.6067	1137.6259	561.3033	547.3058	569.8168	R	428.2365	410.2260	411.2095	402.2571	384.2466	385.2302	214.6183	201.6286	3	
11	44.0499	1192.6438	1174.6333	1175.6168	1164.6488	1146.6383	1147.6218	1209.6708	1191.6603	1192.6438	1208.6630	596.8219	582.8244	605.3354	A	272.1354	254.1248	255.1084	246.1561	228.1455	229.1290	136.5677	123.5780	2	
12	129.1139														R	201.0983	183.0877	184.0713	175.1189	157.1084	158.0919	101.0491	88.0595	1	





#	Immonium	b	b-H2O	b-NH3	a	a-H2O	a-NH3	c	c-H2O	c-NH3	c-H	b (2+)	a (2+)	c (2+)	Seq	x	x-H2O	x-NH3	y	y-H2O	y-NH3	x (2+)	y (2+)	#	
1	84.0414	112.0364	94.0258	95.0094	84.0414	66.0308	67.0144	129.0634	111.0528	112.0364	128.0556	56.5182	42.5207	65.0317	Q(-17.03)										13
2	86.0969	225.1205	207.1099	208.0935	197.1255	179.1149	180.0985	242.1475	224.1369	225.1205	241.1396	113.0602	99.0627	121.5737	L	1587.8643	1569.8536	1570.8373	1561.8849	1543.8744	1544.8579	794.4321	781.4424	12	
3	136.0761	<u>388.1868</u>	370.1732	371.1568	360.1888	342.1782	343.1618	405.2108	387.2002	<u>388.1868</u>	404.2030	194.5919	180.5944	203.1054	Y	1474.7802	1456.7695	1457.7532	<u>1448.7991</u>	1430.7903	<u>1431.7723</u>	737.8901	724.9004	11	
4	102.0554	517.2264	499.2158	500.1994	489.2314	471.2208	472.2044	534.2534	516.2429	517.2264	533.2455	259.1132	245.1157	267.6267	E	1311.7168	1293.7062	1294.6898	<u>1285.7363</u>	<u>1267.7256</u>	1268.7104	656.3584	643.3687	10	
5	87.0558	631.2693	613.2587	614.2423	603.2743	585.2637	586.2473	648.2963	630.2858	631.2693	647.2885	316.1346	302.1371	324.6482	N	1182.6742	1164.6636	1165.6472	<u>1156.6935</u>	1138.6843	<u>1139.6665</u>	591.8371	578.8474	9	
6	101.1078	759.3643	741.3537	742.3373	731.3693	713.3587	714.3423	776.3913	758.3807	759.3643	775.3834	380.1821	366.1846	388.6956	K	1068.6313	1050.6207	1051.6044	<u>1042.6517</u>	1024.6415	1025.6250	534.8157	521.8260	8	
7	70.0856	856.4170	838.4064	839.3900	828.4220	810.4114	811.3950	873.4440	855.4335	856.4170	872.4362	428.7085	414.7110	437.2220	P	940.5364	922.5258	923.5094	<u>914.5562</u>	896.5464	897.5300	470.7682	457.7785	7	
8	129.1139	1012.5181	994.5076	995.4911	984.5231	966.5126	967.4962	1029.5452	1011.5346	1012.5181	1028.5374	506.7591	492.7616	515.2726	R	843.4836	825.4730	826.4565	817.5042	799.4937	800.4772	422.2418	409.2521	6	
9	129.1139	<u>1168.6216</u>	1150.6088	1151.5923	1140.6243	1122.6138	1123.5973	1185.6462	1167.6357	<u>1168.6216</u>	1184.6384	584.8096	570.8121	593.3231	R	687.3825	669.3719	670.3555	661.4031	643.3926	644.3762	344.1913	331.2016	5	
10	70.0856	1265.6720	1247.6615	1248.6450	1237.6770	1219.6665	1220.6500	1282.6990	1264.6885	1265.6720	1281.6912	633.3360	619.3385	641.8495	P	531.2814	513.2708	514.2544	505.3020	487.2915	488.2751	266.1407	253.1510	4	
11	136.0761	<u>1428.7371</u>	1410.7249	<u>1411.7106</u>	1400.7404	1382.7299	1383.7134	1445.7623	1427.7518	<u>1428.7371</u>	1444.7545	714.8677	700.8702	723.3812	Y	434.2286	416.2181	417.2016	408.2493	390.2387	391.2223	217.6143	204.6246	3	
12	86.0969	<u>1541.8204</u>	1523.8088	<u>1524.7937</u>	<u>1513.8265</u>	1495.8138	<u>1496.7977</u>	1558.8463	1540.8358	<u>1541.8204</u>	1557.8385	771.4097	757.4122	779.9232	I	271.1653	253.1548	254.1383	245.1860	227.1754	228.1590	136.0827	123.0930	2	
13	86.0969														L	158.0812	140.0707	141.0542	132.1019	114.0913	115.0749	79.5406	66.5509	1	

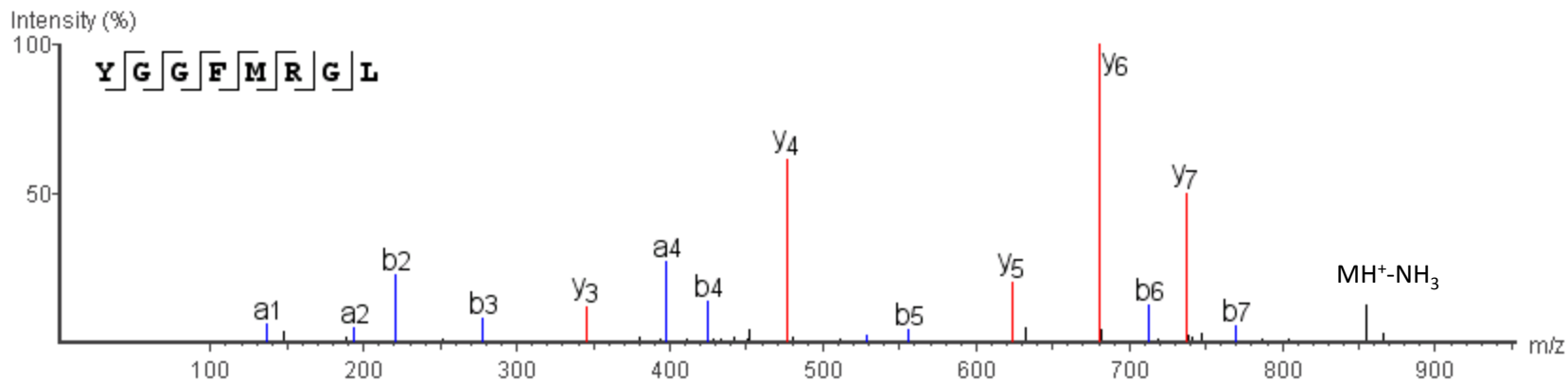


R.YGGFMRGL.K

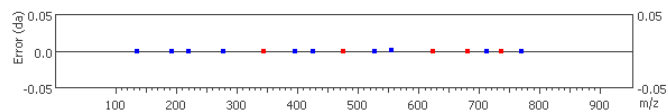
m/z=450.7232

Z=2

Error=-0.5ppm



#	Immonium	b	b-H2O	b-NH3	a	a-H2O	a-NH3	c	c-H2O	c-NH3	c-H	b (2+)	a (2+)	c (2+)	Seq	x	x-H2O	x-NH3	y	y-H2O	y-NH3	x (2+)	y (2+)	#	
1	136.0761	164.0712	146.0606	147.0441	136.0754	118.0656	119.0491	181.0981	163.0876	164.0712	180.0903	82.5356	68.5381	91.0491	Y										8
2	30.0343	221.0921	203.0820	204.0656	193.0971	175.0870	176.0706	238.1196	220.1090	221.0921	237.1118	111.0463	97.0488	119.5598	G	763.3557	745.3451	746.3286	737.3754	719.3657	720.3493	382.1778	369.1881	7	
3	30.0343	278.1135	260.1035	261.0871	250.1191	232.1085	233.0921	295.1411	277.1305	278.1135	294.1333	139.5570	125.5595	148.0705	G	706.3342	688.3236	689.3071	680.3540	662.3442	663.3278	353.6671	340.6774	6	
4	120.0812	425.1819	407.1719	408.1555	397.1868	379.1769	380.1605	442.2095	424.1989	425.1819	441.2017	213.0912	199.0937	221.6047	F	649.3127	631.3022	632.2858	623.3324	605.3228	606.3064	325.1564	312.1667	5	
5	104.0533	556.2213	538.2124	539.1960	528.2269	510.2174	511.2010	573.2500	555.2394	556.2213	572.2421	278.6115	264.6140	287.1250	M	502.2443	484.2338	485.2173	476.2645	458.2544	459.2380	251.6222	238.6325	4	
6	129.1139	712.3228	694.3135	695.2971	684.3291	666.3185	667.3021	729.3511	711.3406	712.3228	728.3433	356.6620	342.6646	365.1756	R	371.2038	353.1933	354.1768	345.2246	327.2139	328.1975	186.1019	173.1122	3	
7	30.0343	769.3444	751.3350	752.3185	741.3505	723.3400	724.3235	786.3726	768.3620	769.3444	785.3647	385.1728	371.1753	393.6863	G	215.1027	197.0922	198.0757	189.1234	171.1128	172.0964	108.0514	95.0617	2	
8	86.0969														L	158.0812	140.0707	141.0542	132.1019	114.0913	115.0749	79.5406	66.5509	1	

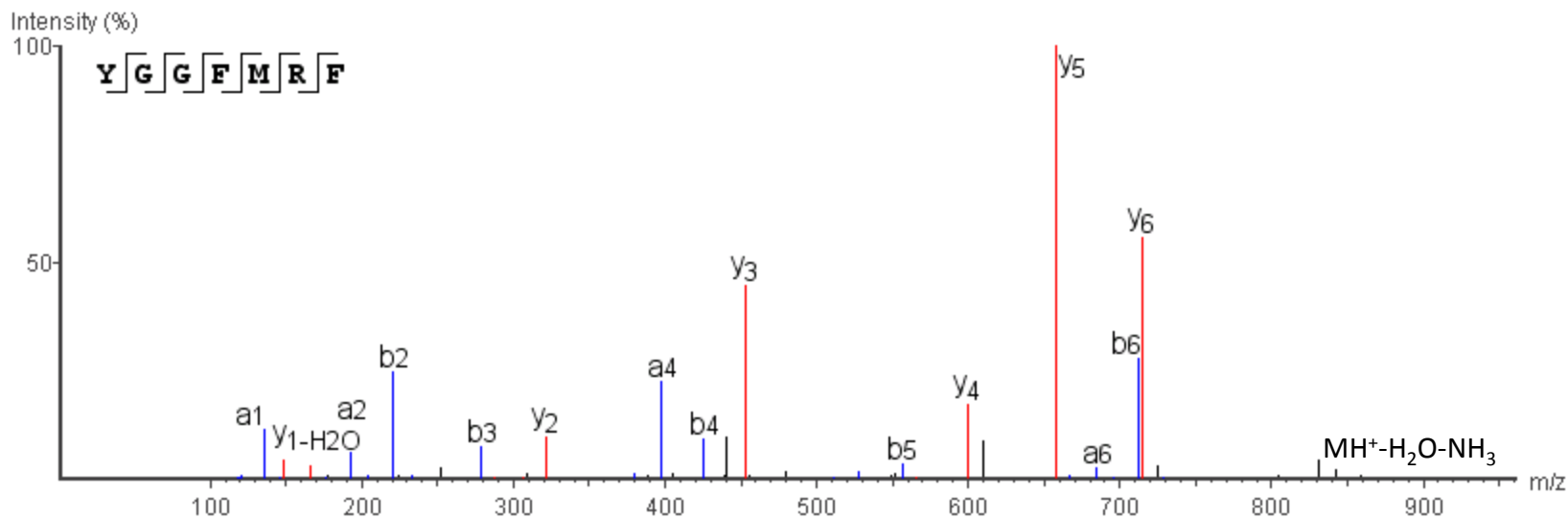


R.YGGFMRF

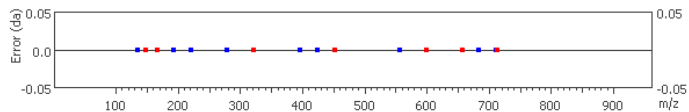
m/z=439.2048

Error=-0.2ppm

Z=2



#	Immonium	b	b-H2O	b-NH3	a	a-H2O	a-NH3	c	c-H2O	c-NH3	c-H	b (2+)	a (2+)	c (2+)	Seq	x	x-H2O	x-NH3	y	y-H2O	y-NH3	x (2+)	y (2+)	#	
1	136.0761	164.0712	146.0606	147.0441	136.0755	118.0656	119.0491	181.0981	163.0876	164.0712	180.0903	82.5356	68.5381	91.0491	Y										7
2	30.0343	221.0922	203.0820	204.0656	193.0972	175.0870	176.0706	238.1196	220.1090	221.0922	237.1118	111.0463	97.0488	119.5598	G	740.3185	722.3080	723.2915	714.3387	696.3286	697.3122	370.6593	357.6696	6	
3	30.0343	278.1141	260.1035	261.0871	250.1191	232.1085	233.0921	295.1411	277.1305	278.1141	294.1333	139.5570	125.5595	148.0705	G	683.2971	665.2865	666.2700	657.3171	639.3071	640.2907	342.1485	329.1588	5	
4	120.0812	425.1821	407.1719	408.1555	397.1873	379.1769	380.1605	442.2095	424.1989	425.1821	441.2017	213.0912	199.0937	221.6047	F	626.2756	608.2651	609.2487	600.2960	582.2857	583.2693	313.6378	300.6481	4	
5	104.0533	556.2224	538.2124	539.1960	528.2280	510.2174	511.2010	573.2500	555.2394	556.2224	572.2421	278.6115	264.6140	287.1250	M	479.2072	461.1967	462.1802	453.2277	435.2173	436.2009	240.1036	227.1139	3	
6	129.1139	712.3234	694.3135	695.2971	684.3289	666.3185	667.3021	729.3511	711.3406	712.3234	728.3433	356.6620	342.6646	365.1756	R	348.1667	330.1561	331.1397	322.1876	304.1768	305.1603	174.5833	161.5937	2	
7	120.0812														F	192.0656	174.0550	175.0386	166.0862	148.0756	149.0592	96.5328	83.5431	1	

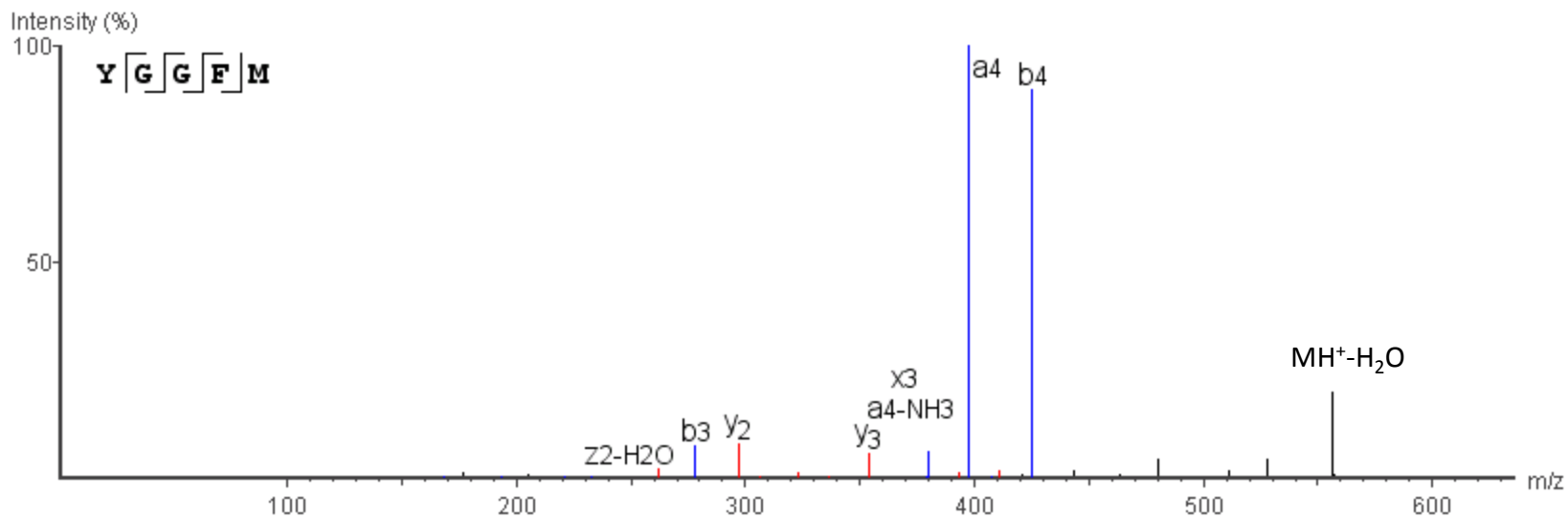


R.YGGFM.R

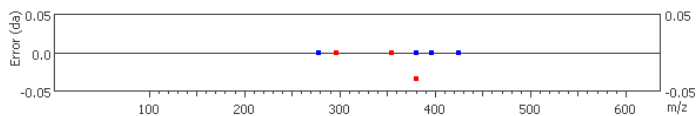
m/z=574.2346

Error=2.9ppm

Z=1



#	Immonium	b	b-H2O	b-NH3	a	a-H2O	a-NH3	c	c-H2O	c-NH3	c-H	b (2+)	a (2+)	c (2+)	Seq	x	x-H2O	x-NH3	y	y-H2O	y-NH3	x (2+)	y (2+)	#	
1	136.0761	164.0712	146.0606	147.0441	136.0761	118.0656	119.0491	181.0981	163.0876	164.0712	180.0903	82.5356	68.5381	91.0491	Y										5
2	30.0343	221.0926	203.0820	204.0656	193.0976	175.0870	176.0706	238.1196	220.1090	221.0926	237.1118	111.0463	97.0488	119.5598	G	437.1490	419.1385	420.1220	411.1696	393.1591	394.1427	219.0745	206.0848	4	
3	30.0343	278.1147	260.1035	261.0871	250.1191	232.1085	233.0921	295.1411	277.1305	278.1147	294.1333	139.5570	125.5595	148.0705	G	380.1617	362.1170	363.1006	354.1496	336.1376	337.1212	190.5638	177.5741	3	
4	120.0812	425.1831	407.1719	408.1555	397.1883	379.1769	380.1617	442.2095	424.1989	425.1831	441.2017	213.0912	199.0937	221.6047	F	323.1061	305.0955	306.0791	297.1276	279.1161	280.0997	162.0530	149.0634	2	
5	104.0533														M	176.0377	158.0271	159.0107	150.0583	132.0478	133.0313	88.5188	75.5292	1	

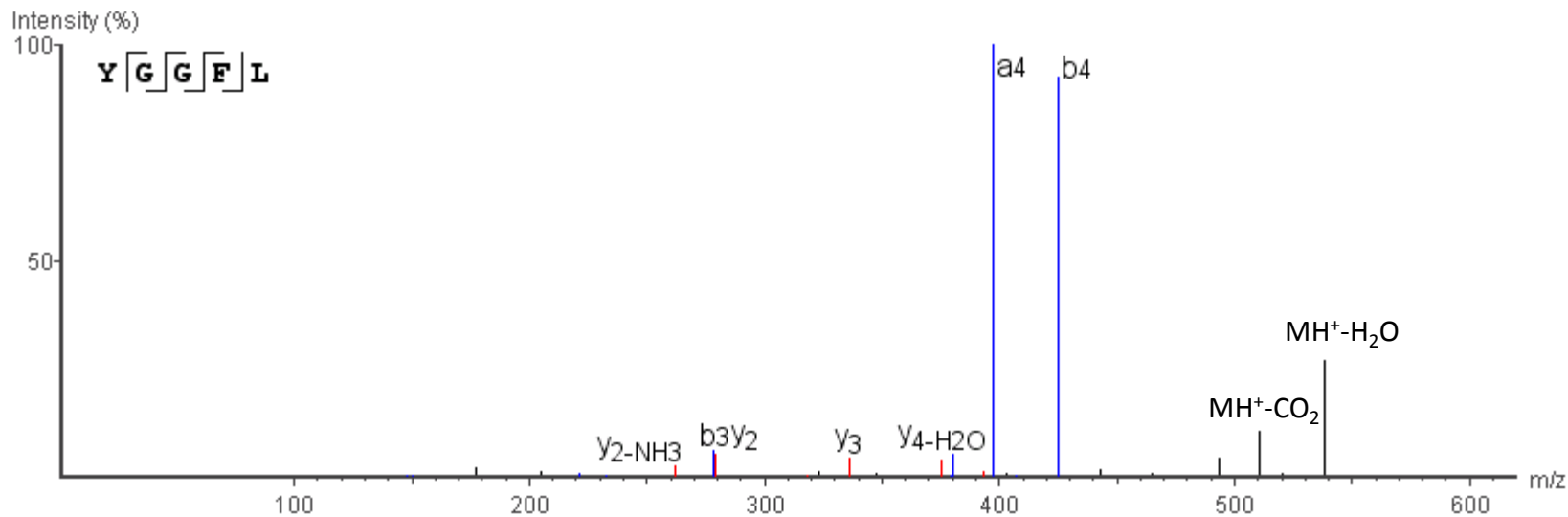


R.YGGFLK

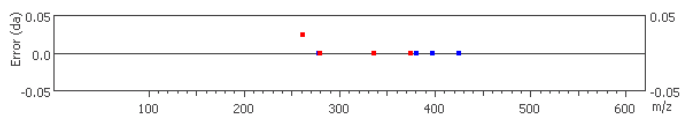
m/z=556.2753

Error=-2.2ppm

Z=1



#	Immonium	b	b-H ₂ O	b-NH ₃	a	a-H ₂ O	a-NH ₃	c	c-H ₂ O	c-NH ₃	c-H	b (2+)	a (2+)	c (2+)	Seq	x	x-H ₂ O	x-NH ₃	y	y-H ₂ O	y-NH ₃	x (2+)	y (2+)	#	
1	136.0761	164.0712	146.0606	147.0441	136.0761	118.0656	119.0491	181.0981	163.0876	164.0712	180.0903	82.5356	68.5381	91.0491	Y										5
2	30.0343	221.0926	203.0820	204.0656	193.0976	175.0870	176.0706	236.1196	220.1090	221.0926	237.1118	111.0463	97.0488	119.5598	G	419.1926	401.1820	402.1656	393.2132	375.2027	376.1862	210.0963	197.1066	4	
3	30.0343	278.1136	260.1035	261.0871	250.1191	232.1085	233.0921	295.1411	277.1305	278.1136	294.1333	139.5570	125.5595	148.0705	G	362.1711	344.1606	345.1441	336.1918	318.1812	319.1648	181.5856	168.5959	3	
4	120.0812	425.1818	407.1719	408.1555	397.1868	379.1769	380.1606	442.2095	424.1989	425.1818	441.2017	213.0912	199.0937	221.6047	F	305.1497	287.1391	288.1227	279.1706	261.1597	262.1187	153.0748	140.0851	2	
5	86.0969														L	158.0812	140.0707	141.0542	132.1019	114.0913	115.0749	79.5406	66.5509	1	

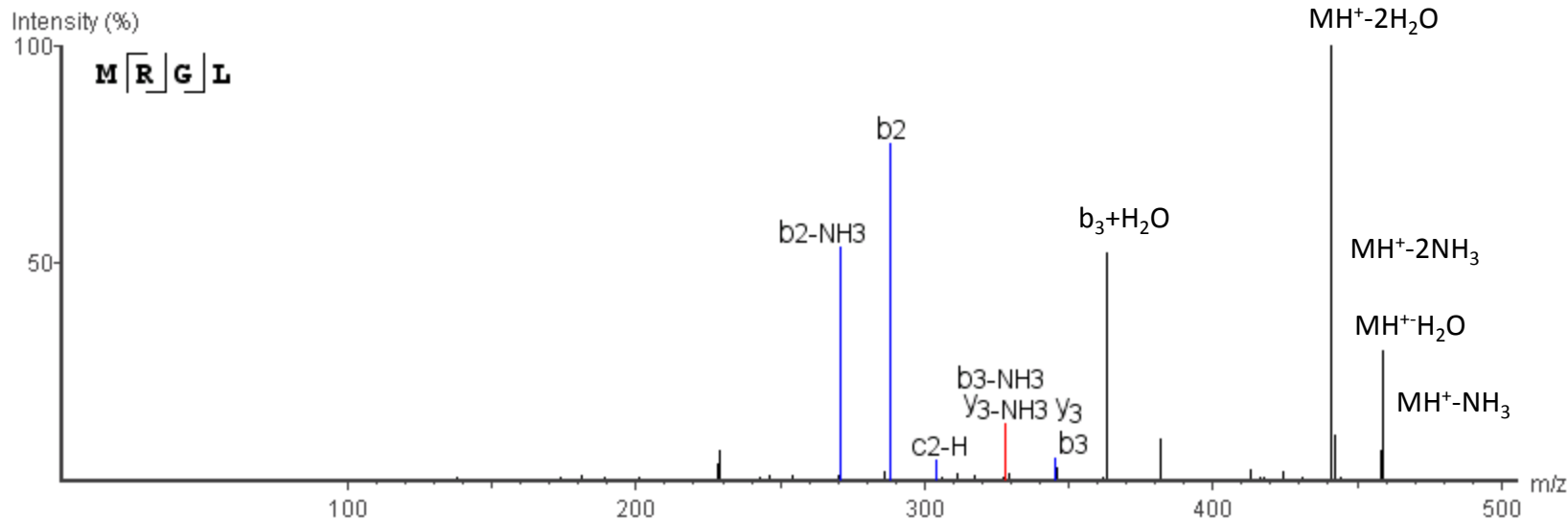


F.MRGLK

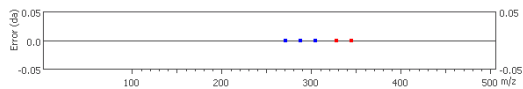
m/z=476.2649

Error=-0.1ppm

Z=1



#	Immonium	b	b+H2O	b-NH3	a	a+H2O	a-NH3	c	c+H2O	c-NH3	c-H	b (2+)	a (2+)	c (2+)	Seq	x	x+H2O	x-NH3	y	y+H2O	y-NH3	x (2+)	y (2+)	#
1	104.0533	132.0483	114.0378	115.0213	104.0533	86.0428	87.0263	149.0753	131.0648	132.0483	148.0675	66.5242	52.5267	75.0377	M	371.2038	353.1933	354.1768	345.2250	327.2139	328.1904	186.1019	173.1122	4
2	129.1139	288.1487	270.1389	271.1223	260.1544	242.1439	243.1274	305.1764	287.1659	288.1487	304.1693	144.5747	130.5772	153.0882	R	215.1027	197.0922	198.0757	189.1234	171.1128	172.0964	108.0514	95.0617	2
3	30.0343	345.1708	327.1603	328.1442	317.1759	299.1653	300.1489	362.1979	344.1873	345.1708	361.1901	173.0854	159.0879	181.5969	G	158.0812	140.0707	141.0542	132.1019	114.0913	115.0749	79.5406	66.5509	1
4	86.0969														L									

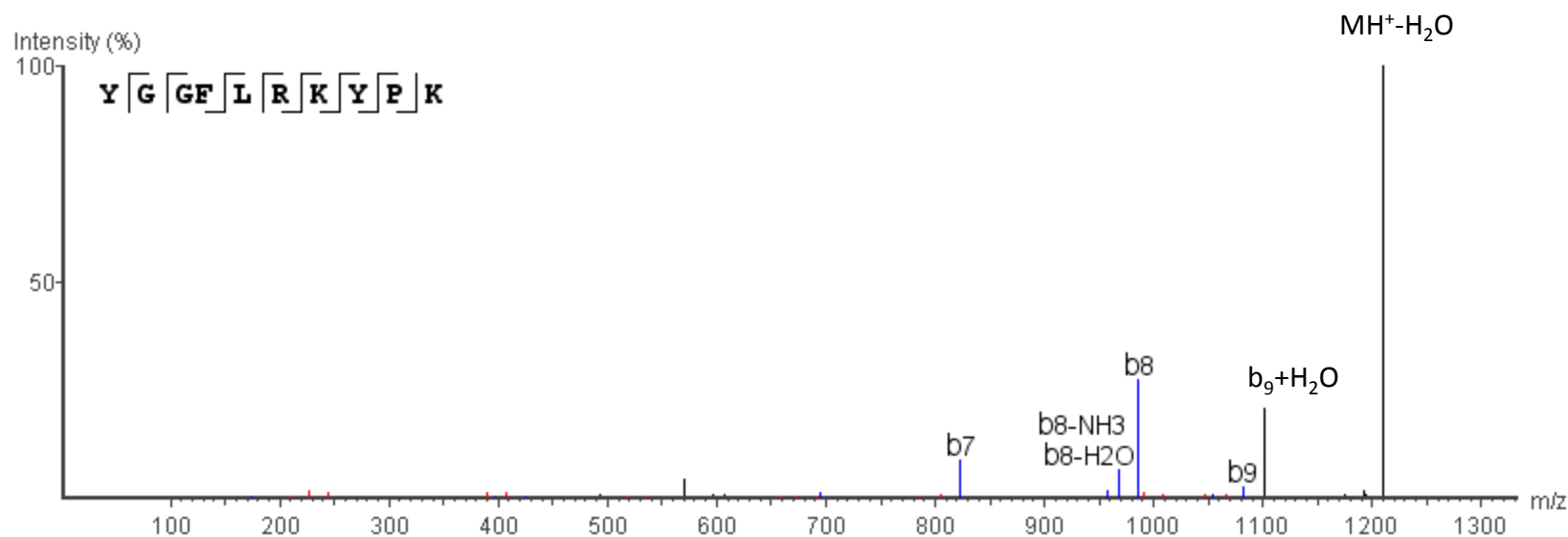


YGGFLRKYPK.R

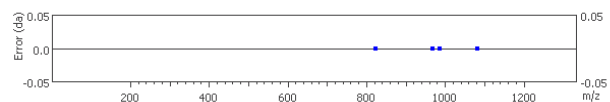
m/z=614.8452

Error=-0.4ppm

Z=2



#	Immonium	b	b-H2O	b-NH3	a	a-H2O	a-NH3	c	c-H2O	c-NH3	c-H	b (2+)	a (2+)	c (2+)	Seq	x	x-H2O	x-NH3	y	y-H2O	y-NH3	x (2+)	y (2+)	#	
1	136.0761	164.0712	146.0606	147.0441	136.0761	118.0656	119.0491	181.0981	163.0876	164.0712	180.0903	82.5356	68.5381	91.0491	Y										10
2	30.0343	221.0926	203.0820	204.0656	193.0976	175.0870	176.0706	238.1196	220.1090	221.0926	237.1118	111.0463	97.0488	119.5598	G	1091.5997	1073.5891	1074.5728	1065.6204	1047.6099	1048.5934	546.2999	533.3102	9	
3	30.0343	278.1141	260.1035	261.0871	250.1191	232.1085	233.0921	295.1411	277.1305	278.1141	294.1333	139.5570	125.5595	148.0705	G	1034.5782	1016.5677	1017.5513	1008.5989	990.5883	991.5719	517.7891	504.7994	8	
4	120.0812	425.1825	407.1719	408.1555	397.1875	379.1769	380.1605	442.2095	424.1989	425.1825	441.2017	213.0912	199.0937	221.6047	F	977.5568	959.5462	960.5298	951.5774	933.5668	934.5504	469.2784	476.2887	7	
5	86.0969	538.2665	520.2560	521.2396	510.2715	492.2610	493.2446	555.2936	537.2830	538.2665	554.2857	269.6333	255.6358	278.1468	L	830.4683	812.4778	813.4613	804.5090	786.4984	787.4820	415.7442	402.7545	6	
6	129.1139	694.3676	676.3571	677.3406	666.3726	648.3621	649.3456	711.3947	693.3841	694.3676	710.3868	347.6838	333.6863	356.1973	R	717.4043	699.3937	700.3773	691.4249	673.4144	674.3979	359.2021	346.2125	5	
7	101.1078	<u>822.4619</u>	804.4520	805.4356	794.4676	776.4570	777.4406	839.4896	821.4791	<u>822.4619</u>	838.4818	411.7313	397.7338	420.2448	K	561.3032	543.2926	544.2761	535.3238	517.3132	518.2968	281.1516	268.1619	4	
8	136.0761	<u>985.5252</u>	<u>967.5151</u>	968.4989	957.5309	939.5203	940.5039	1002.5529	984.5424	<u>985.5252</u>	1001.5450	493.2629	479.2654	501.7765	Y	433.2082	415.1977	416.1812	407.2289	389.2183	390.2019	217.1041	204.1144	3	
9	70.0656	<u>1082.5776</u>	1064.5681	1065.5516	1054.5836	1036.5731	1037.5566	1099.6056	1081.5951	<u>1082.5776</u>	1098.5978	541.7893	527.7918	550.3028	P	270.1449	252.1343	253.1179	244.1655	226.1550	227.1385	135.5724	122.5828	2	
10	101.1078														K	173.0921	155.0816	156.0651	147.1128	129.1022	130.0858	87.0461	74.0564	1	

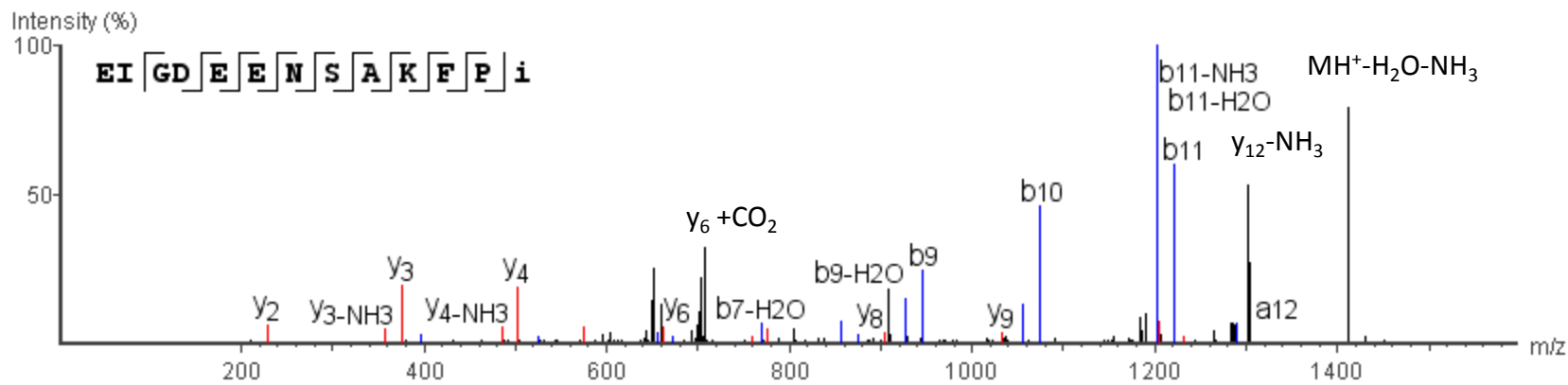


R.EIGDEENSAKFPI(-.98).G

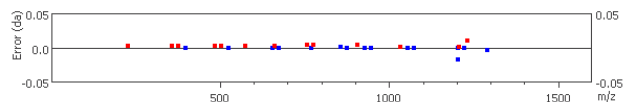
m/z=724.3577

Z=2

Error=1.3ppm



#	Immonium	b	b-H2O	b-NH3	a	a-H2O	a-NH3	c	c-H2O	c-NH3	c-H	b(2+)	a(2+)	c(2+)	Seq	x	x-H2O	x-NH3	y	y-H2O	y-NH3	x(2+)	y(2+)	#	
1	102.0554	130.0504	112.0399	113.0234	102.0554	84.0449	85.0284	147.0774	129.0668	130.0504	146.0696	65.5252	51.5277	74.0387	E										13
2	86.0969	243.1345	225.1239	226.1075	215.1395	197.1289	198.1125	260.1615	242.1509	243.1345	259.1537	122.0672	108.0697	130.5807	I	1344.6471	1326.6365	1327.6201	1318.6677	1300.6572	1301.6407	672.8235	659.8339	12	
3	30.0343	300.1559	282.1454	283.1289	272.1609	254.1504	255.1339	317.1829	299.1724	300.1559	316.1751	150.5780	136.5805	159.0915	G	1231.5508	1213.5524	1214.5360	1205.5807	1187.5731	1188.5566	616.2815	603.2918	11	
4	88.0398	415.1829	397.1720	398.1559	387.1879	369.1773	370.1609	432.2099	414.1993	415.1829	431.2021	208.0914	194.0939	216.6049	D	1174.5415	1156.5309	1157.5145	1148.5621	1130.5516	1131.5352	587.7708	574.7811	10	
5	102.0554	544.2255	526.2152	527.1985	516.2305	498.2199	499.2035	561.2525	543.2419	544.2255	560.2446	272.6127	258.6152	281.1263	E	1059.5145	1041.5040	1042.4875	1033.5328	1015.5247	1016.5082	530.2573	517.2676	9	
6	102.0554	673.2672	655.2563	656.2411	645.2731	627.2625	628.2461	690.2951	672.2845	673.2672	689.2872	337.1340	323.1365	345.6476	E	930.4720	912.4615	913.4451	904.4868	886.4821	887.4657	465.7360	452.7463	8	
7	87.0558	787.3110	769.2994	770.2840	759.3160	741.3054	742.2890	804.3380	786.3275	787.3110	803.3301	394.1555	380.1580	402.6690	N	801.4294	783.4189	784.4025	775.4447	757.4395	758.4183	401.2147	388.2250	7	
8	60.0449	874.3445	856.3307	857.3160	846.3480	828.3375	829.3210	891.3701	873.3595	874.3445	890.3622	437.6715	423.6740	446.1850	S	687.3865	669.3759	670.3595	661.4034	643.3965	644.3801	344.1932	331.2036	6	
9	44.0499	945.3789	927.3689	928.3531	917.3851	899.3746	900.3582	962.4072	944.3966	945.3789	961.3993	473.1901	459.1926	481.7036	A	600.3545	582.3439	583.3275	574.3714	556.3646	557.3481	300.6772	287.6876	5	
10	101.1078	1073.4746	1055.4636	1056.4481	1045.4801	1027.4696	1028.4531	1090.5021	1072.4916	1073.4746	1089.4943	537.2375	523.2401	545.7510	K	529.3174	511.3068	512.2904	503.3337	485.3275	486.3072	265.1587	252.1690	4	
11	120.0812	1220.5425	1202.5317	1203.5348	1192.5485	1174.5380	1175.5215	1237.5704	1219.5599	1220.5425	1236.5626	610.7717	596.7742	619.2852	F	401.2224	383.2119	384.1954	375.2393	357.2325	358.2128	201.1112	188.1215	3	
12	70.0656	1317.5962	1299.5857	1300.5692	1289.6047	1271.5907	1272.5742	1334.6232	1316.6127	1317.5962	1333.6154	659.2981	645.3006	667.8116	P	254.1540	236.1434	237.1270	228.1711	210.1641	211.1476	127.5770	114.5873	2	
13	85.1169														I(-.98)	157.1012	139.0907	140.0742	131.1219	113.1113	114.0949	79.0506	66.0609	1	

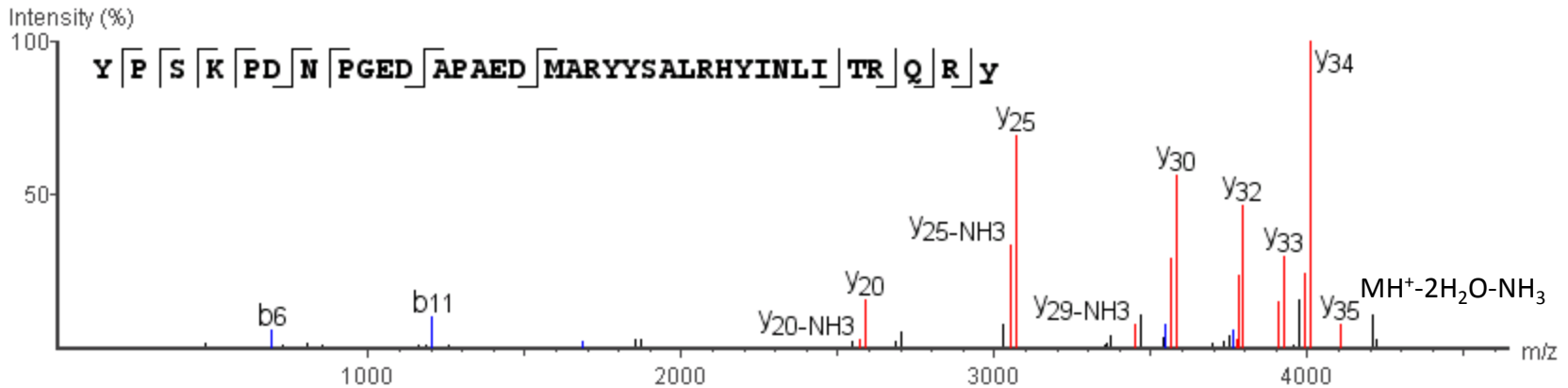


G.YPSKPDNPGEDAPAEDMARYYSALRHYINLITRQRY(-.98).G

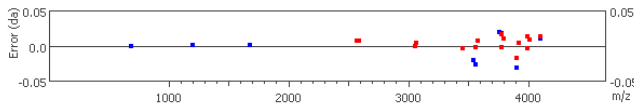
m/z=1068.281

Z=4

Error=3.2ppm



#	Immonium	b	b-H2O	b-NH3	a	a-H2O	a-NH3	c	c-H2O	c-NH3	b(2+)	a(2+)	c(2+)	Seq	x	x-H2O	x-NH3	y	y-H2O	y-NH3	x(2+)	y(2+)	#
1	136.08	164.07	146.06	147.04	136.08	118.07	119.05	181.10	163.09	164.07	82.54	68.54	91.05										36
2	70.07	261.12	243.11	244.10	233.13	215.12	216.10	278.15	260.14	261.12	131.06	117.06	139.58	P	4133.01	4115.00	4115.98	4107.01	4089.02	4090.00	2067.00	2054.01	35
3	60.04	348.16	330.15	331.13	320.16	302.15	303.13	365.18	347.17	348.16	174.58	160.58	183.09	S	4035.96	4017.95	4018.93	4009.97	3991.95	3992.95	2018.48	2005.49	34
4	101.11	476.25	458.24	459.22	448.26	430.25	431.23	493.28	475.27	476.25	238.63	224.63	247.14	K	3948.92	3930.91	3931.90	3922.94	3904.93	3905.93	1974.96	1961.97	33
5	70.07	573.30	555.29	556.28	545.31	527.30	528.28	590.33	572.32	573.30	287.15	273.15	295.67	P	3820.83	3802.82	3803.80	3794.84	3776.82	3777.83	1910.91	1897.92	32
6	88.04	688.33	670.32	671.30	660.34	642.33	643.31	705.36	687.35	688.33	344.67	330.67	353.18	D	3723.78	3705.77	3706.75	3697.80	3679.79	3680.77	1862.39	1849.40	31
7	87.06	802.37	784.36	785.35	774.38	756.37	757.35	819.40	801.39	802.37	401.69	387.69	410.20	N	3608.75	3590.74	3591.72	3582.76	3564.76	3565.75	1804.87	1791.88	30
8	70.07	899.43	881.42	882.40	871.43	853.42	854.40	916.45	898.44	899.43	450.21	436.22	458.73	P	3494.71	3476.70	3477.68	3468.73	3450.72	3451.70	1747.85	1734.86	29
9	30.03	956.45	938.44	939.42	928.45	910.44	911.43	973.47	955.46	956.45	473.25	464.73	487.24	G	3397.65	3379.64	3380.63	3371.67	3353.66	3354.65	1699.33	1686.34	28
10	102.06	1085.49	1067.48	1068.46	1057.50	1039.48	1040.47	1102.52	1084.51	1085.49	548.25	529.25	551.76	E	3340.63	3322.62	3323.60	3314.65	3296.64	3297.63	1670.82	1657.83	27
11	88.04	1200.52	1182.51	1183.49	1172.52	1154.51	1155.50	1217.54	1199.53	1200.52	600.76	586.76	609.27	D	3211.59	3193.58	3194.56	3185.61	3167.60	3168.58	1606.29	1593.31	26
12	44.05	1271.55	1253.54	1254.53	1243.56	1225.55	1226.53	1288.58	1270.57	1271.55	636.28	622.28	644.79	A	3096.56	3078.55	3079.54	3070.58	3052.57	3053.56	1548.78	1535.79	25
13	70.07	1368.61	1350.60	1351.58	1340.61	1322.60	1323.59	1385.63	1367.62	1368.61	684.80	670.81	693.32	P	3025.53	3007.51	3008.50	2999.55	2981.54	2982.52	1513.26	1500.27	24
14	44.05	1439.64	1421.63	1422.62	1411.65	1393.64	1394.62	1456.67	1438.66	1439.64	720.32	706.32	728.84	A	2928.47	2910.46	2911.45	2902.49	2884.48	2885.47	1464.74	1451.75	23
15	102.06	1568.69	1550.68	1551.66	1540.69	1522.68	1523.66	1585.71	1567.70	1568.69	784.84	770.85	793.36	E	2857.44	2839.42	2840.41	2831.46	2813.45	2814.43	1429.22	1416.23	22
16	88.04	1683.71	1665.70	1666.69	1655.72	1637.71	1638.69	1700.74	1682.73	1683.71	842.36	828.36	850.87	D	2728.39	2710.38	2711.37	2702.41	2684.40	2685.39	1364.70	1351.71	21
17	104.05	1814.75	1796.74	1797.73	1786.76	1768.75	1769.73	1831.78	1813.77	1814.75	907.88	893.88	916.39	M	2613.37	2595.36	2596.34	2587.38	2569.38	2570.35	1307.18	1294.19	20
18	44.05	1885.79	1867.78	1868.76	1857.80	1839.79	1840.77	1902.82	1884.81	1885.79	943.40	929.40	951.91	A	2482.33	2464.31	2465.30	2456.35	2438.34	2439.32	1241.66	1228.67	19
19	129.11	2041.89	2023.88	2024.87	2013.90	1995.89	1996.87	2058.92	2040.91	2041.89	1021.45	1007.45	1029.96	R	2411.29	2393.28	2394.26	2385.31	2367.30	2368.28	1206.14	1193.15	18
20	136.08	2204.96	2186.95	2187.93	2176.96	2158.95	2159.93	2221.98	2203.97	2204.96	1102.98	1088.98	1111.49	Y	2255.19	2237.18	2238.16	2229.21	2211.20	2212.18	1128.09	1115.10	17
21	136.08	2368.02	2350.01	2350.99	2340.02	2322.01	2323.00	2385.05	2367.04	2368.02	1184.51	1170.51	1193.02	Y	2092.12	2074.11	2075.10	2066.14	2048.13	2049.12	1046.56	1033.57	16
22	60.04	2455.05	2437.04	2438.02	2427.06	2409.05	2410.03	2472.08	2454.07	2455.05	1228.03	1214.03	1236.54	S	1929.06	1911.05	1912.03	1903.08	1885.07	1886.05	965.03	952.04	15
23	44.05	2526.09	2508.08	2509.06	2498.09	2480.08	2481.07	2543.12	2525.10	2526.09	1263.54	1249.55	1272.06	A	1842.03	1824.02	1825.00	1816.05	1798.04	1799.02	921.51	908.52	14
24	86.10	2639.17	2621.16	2622.15	2611.18	2593.17	2594.15	2656.20	2638.19	2639.17	1320.09	1306.09	1328.60	L	1770.99	1752.98	1753.96	1745.01	1727.00	1727.99	886.00	873.01	13
25	129.11	2795.27	2777.26	2778.25	2767.28	2749.27	2750.25	2812.30	2794.29	2795.27	1398.14	1384.14	1406.65	R	1657.91	1639.90	1640.88	1631.93	1613.92	1614.90	829.45	816.46	12
26	110.07	2932.33	2914.32	2915.31	2904.34	2886.33	2887.31	2949.36	2931.35	2932.33	1466.67	1452.67	1475.18	H	1501.81	1483.80	1484.78	1475.83	1457.82	1458.80	751.40	738.41	11
27	136.08	3095.40	3077.39	3078.37	3067.40	3049.39	3050.37	3112.42	3094.41	3095.40	1548.20	1534.20	1556.71	Y	1364.75	1346.74	1347.72	1338.77	1320.76	1321.74	682.87	669.88	10
28	86.10	3208.48	3190.47	3191.45	3180.48	3162.47	3163.46	3225.51	3207.50	3208.48	1604.74	1590.74	1613.25	I	1201.68	1183.67	1184.66	1175.70	1157.69	1158.68	601.34	588.35	9
29	87.06	3322.52	3304.51	3305.50	3294.53	3276.52	3277.50	3339.55	3321.54	3322.52	1661.76	1647.76	1670.27	N	1088.60	1070.59	1071.57	1062.62	1044.61	1045.59	544.80	531.81	8
30	86.10	3435.61	3417.60	3418.58	3407.61	3389.60	3390.58	3452.63	3434.62	3435.61	1718.30	1704.31	1726.82	L	974.56	956.55	957.53	948.58	930.57	931.55	487.78	474.79	7
31	86.10	3548.69	3530.68	3531.66	3520.70	3502.69	3503.67	3565.75	3547.73	3548.69	1774.85	1760.85	1783.36	I	861.47	843.46	844.45	835.49	817.48	818.47	431.24	418.25	6
32	74.06	3649.74	3631.73	3632.71	3621.74	3603.73	3604.72	3666.77	3648.76	3649.74	1825.37	1811.37	1833.88	T	748.39	730.38	731.36	722.41	704.40	705.38	374.69	361.70	5
33	129.11	3805.84	3787.83	3788.81	3777.83	3759.81	3760.82	3822.87	3804.86	3805.84	1902.42	1889.42	1911.93	R	647.34	629.33	630.31	621.36	603.35	604.33	324.17	311.18	4
34	101.07	3933.90	3915.89	3916.87	3905.93	3887.89	3888.88	3950.93	3932.91	3933.90	1967.45	1953.45	1975.96	Q	491.24	473.23	474.21	465.26	447.25	448.23	246.12	233.13	3
35	129.11	4090.00	4071.99	4072.97	4062.00	4043.99	4044.98	4107.01	4089.02	4090.00	2045.50	2031.50	2054.01	R	363.18	345.17	346.15	337.20	319.19	320.18	182.09	169.10	2
36	135.10													(Y(-.98))	207.08	189.07	190.05	181.10	163.09	164.07	104.04	91.05	1

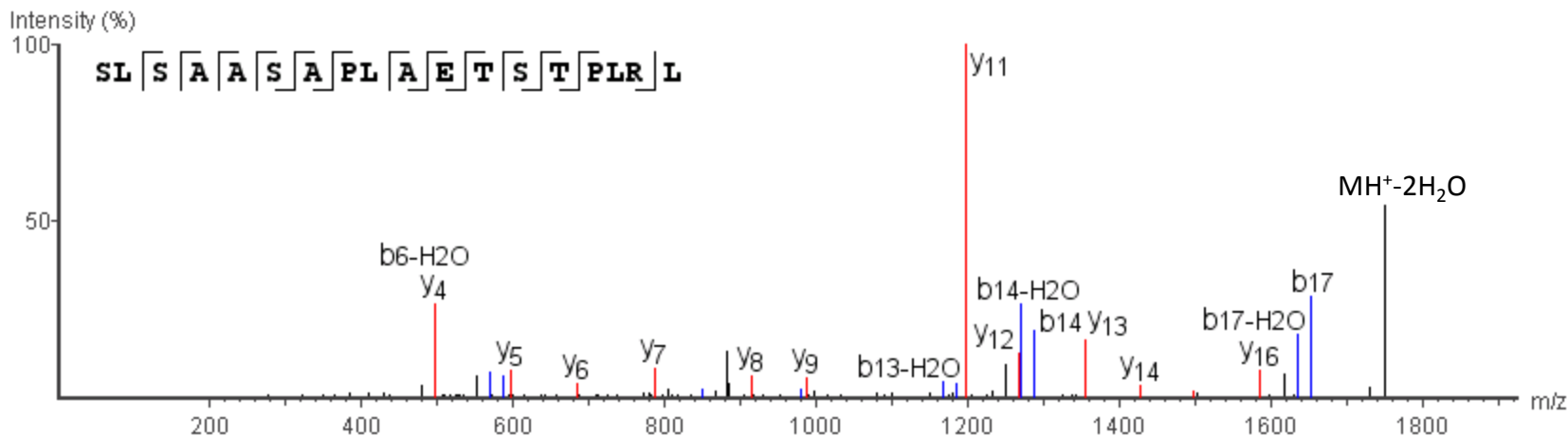


R.SLSAASAPLAETSTPLRL.R

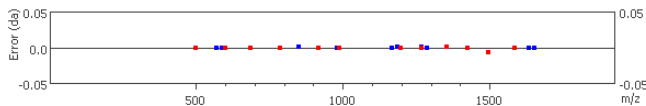
m/z=892.9921

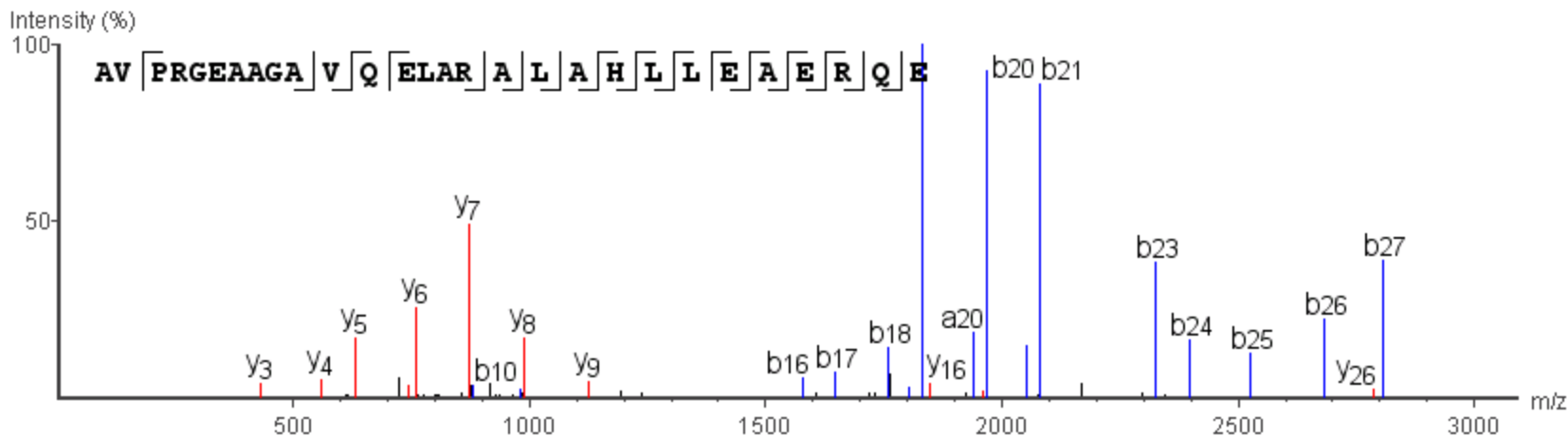
Z=2

Error=1ppm

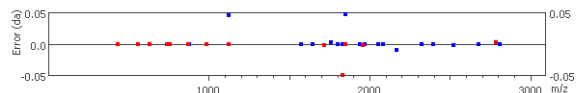


#	Immonium	b	b-H2O	b-NH3	a	a-H2O	a-NH3	c	c-H2O	c-NH3	c-H	b (2+)	a (2+)	c (2+)	Seq	x	x-H2O	x-NH3	y	y-H2O	y-NH3	x (2+)	y (2+)	#
1	60.0449	88.0399	70.0293	71.0129	60.0449	42.0343	43.0179	105.0669	87.0563	88.0399	104.0590	44.5199	30.5224	53.0334	S									18
2	86.0969	201.1239	183.1134	184.0969	173.1289	155.1183	156.1019	218.1509	200.1404	201.1239	217.1431	101.0620	87.0645	109.5755	L	1723.9225	1705.9119	1706.8955	1697.9431	1679.9326	1680.9161	862.4612	849.4716	17
3	60.0449	288.1559	270.1454	271.1290	260.1609	242.1504	243.1340	305.1830	287.1724	288.1559	304.1751	144.5780	130.5805	153.0915	S	1610.8385	1592.8279	1593.8115	1584.8582	1566.8486	1567.8322	805.9193	792.9296	16
4	44.0499	359.1931	341.1825	342.1661	331.1981	313.1875	314.1711	376.2201	358.2095	359.1931	375.2122	180.0965	166.0990	188.6100	A	1523.8064	1505.7958	1506.7794	1497.8337	1479.8165	1480.8000	762.4032	749.4135	15
5	44.0499	430.2302	412.2196	413.2032	402.2352	384.2246	385.2082	447.2572	429.2466	430.2302	446.2494	215.6151	201.6176	224.1286	A	1452.7823	1434.7587	1435.7423	1426.7908	1408.7794	1409.7629	726.8846	713.8950	14
6	60.0449	517.2622	499.2521	500.2352	489.2672	471.2567	472.2402	534.2892	516.2787	517.2622	533.2814	259.1311	245.1336	267.6446	S	1381.7322	1363.7216	1364.7052	1355.7504	1337.7423	1338.7258	691.3661	678.3764	13
7	44.0499	588.2988	570.2890	571.2723	560.3043	542.2938	543.2773	605.3264	587.3158	588.2988	604.3185	294.6497	280.6522	303.1632	A	1294.7002	1276.6896	1277.6732	1268.7207	1250.7103	1251.6938	647.8501	634.8604	12
8	70.0656	685.3521	667.3415	668.3251	657.3571	639.3465	640.3301	702.3791	684.3685	685.3521	701.3712	343.1760	329.1785	351.6895	P	1223.6631	1205.6525	1206.6361	1197.6836	1179.6732	1180.6567	612.3315	599.3419	11
9	86.0969	798.4361	780.4255	781.4091	770.4411	752.4305	753.4141	815.4631	797.4526	798.4361	814.4553	399.7180	385.7206	408.2316	L	1126.6104	1108.5997	1109.5834	1100.6310	1082.6205	1083.6040	563.8052	550.8155	10
10	44.0499	869.4732	851.4603	852.4462	841.4782	823.4677	824.4512	886.5002	868.4897	869.4732	885.4924	435.2366	421.2391	443.7501	A	1013.5262	995.5157	996.4993	987.5468	969.5363	970.5199	507.2631	494.2734	9
11	102.0554	998.5158	980.5043	981.4888	970.5208	952.5103	953.4938	1015.5428	997.5323	998.5158	1014.5350	499.7579	485.7604	508.2714	E	942.4891	924.4786	925.4622	916.5093	898.4992	899.4828	471.7446	458.7549	8
12	74.0605	1099.5635	1081.5530	1082.5365	1071.5685	1053.5580	1054.5415	1116.5905	1098.5800	1099.5635	1115.5826	550.2817	536.2842	558.7952	T	813.4466	795.4360	796.4196	787.4670	769.4567	770.4402	407.2233	394.2336	7
13	60.0449	1186.5929	1168.5861	1169.5695	1158.6005	1140.5900	1141.5735	1203.6224	1185.6119	1186.5929	1202.6146	593.7977	579.8002	602.3112	S	712.3989	694.3883	695.3718	686.4197	668.4089	669.3925	356.6994	343.7097	6
14	74.0605	1287.6427	1269.6311	1270.6162	1259.6482	1241.6377	1242.6212	1304.6702	1286.6597	1287.6427	1303.6624	644.3216	630.3241	652.8351	T	625.3669	607.3563	608.3398	599.3881	581.3770	582.3605	313.1834	300.1938	5
15	70.0656	1384.6959	1366.6854	1367.6689	1356.7009	1338.6904	1339.6740	1401.7229	1383.7124	1384.6959	1400.7151	692.8480	678.8505	701.3615	P	524.3192	506.3086	507.2922	498.3400	480.3293	481.3128	262.6596	249.6699	4
16	86.0969	1497.7800	1479.7695	1480.7531	1469.7850	1451.7745	1452.7581	1514.8070	1496.7965	1497.7800	1513.7992	749.3900	735.3925	757.9035	L	427.2664	409.2559	410.2394	401.2870	383.2765	384.2601	214.1332	201.1435	3
17	129.1139	1653.8809	1635.8704	1636.8541	1625.8861	1607.8756	1608.8591	1670.9081	1652.8976	1653.8809	1669.9003	827.4406	813.4431	835.9540	R	314.1824	296.1718	297.1554	288.2030	270.1924	271.1760	157.5912	144.6015	2
18	86.0969														L	158.0812	140.0707	141.0542	132.1019	114.0913	115.0749	79.5406	66.5509	1





#	Immonium	b	b+H2O	b-NH3	a	a+H2O	a-NH3	c	c+H2O	c-NH3	c-H	b(2+)	a(2+)	c(2+)	Seq	x	x+H2O	x-NH3	y	y+H2O	y-NH3	x(2+)	y(2+)	#
1	44.0499	72.0449	54.0344	55.0179	44.0499	26.0394	27.0229	89.0719	71.0614	72.0449	88.0641	36.5225	22.5250	45.0360	A									28
2	72.0812	171.1134	153.1028	154.0863	143.1183	125.1078	126.0914	188.1404	170.1298	171.1134	187.1325	86.0567	72.0592	94.5702	V	2910.5178	2892.5073	2893.4910	2884.5386	2866.5281	2867.5115	1455.7589	1442.7693	27
3	70.0656	268.1661	250.1555	251.1391	240.1711	222.1605	223.1441	285.1931	267.1825	268.1661	284.1853	134.5830	120.5855	143.0965	P	2811.4495	2793.4390	2794.4226	2785.4661	2767.4597	2768.4431	1406.2247	1393.2351	26
4	129.1139	424.2672	406.2567	407.2402	396.2722	378.2617	379.2452	441.2942	423.2837	424.2672	440.2864	212.6336	198.6361	221.1471	R	2714.3967	2696.3862	2697.3699	2688.4175	2670.4070	2671.3904	1357.6984	1344.7087	25
5	30.0343	481.2887	463.2781	464.2617	453.2937	435.2831	436.2667	498.3157	480.3051	481.2887	497.3079	241.1443	227.1468	249.6578	G	2558.2957	2540.2852	2541.2688	2532.3164	2514.3059	2515.2893	1279.6478	1266.6582	24
6	102.0554	610.3312	592.3207	593.3043	582.3362	564.3257	565.3093	627.3583	609.3477	610.3312	626.3504	305.6656	291.6681	314.1791	E	2501.2742	2483.2637	2484.2473	2475.2949	2457.2844	2458.2678	1251.1371	1238.1475	23
7	44.0499	681.3683	663.3578	664.3414	653.3734	635.3628	636.3464	698.3954	680.3848	681.3683	697.3875	341.1842	327.1867	349.6977	A	2372.2317	2354.2212	2355.2048	2346.2524	2328.2419	2329.2253	1186.6158	1173.6262	22
8	44.0499	752.4055	734.3949	735.3785	724.4105	706.3999	707.3835	769.4325	751.4219	752.4055	768.4246	376.7027	362.7052	385.2162	A	2301.1946	2283.1841	2284.1677	2275.2153	2257.2048	2258.1882	1151.5973	1138.1077	21
9	30.0343	809.4269	791.4164	792.4000	781.4319	763.4214	764.4050	826.4540	808.4434	809.4269	825.4461	405.2135	391.2160	413.7270	G	2230.1575	2212.1470	2213.1306	2204.1782	2186.1677	2187.1511	1115.5787	1102.5891	20
10	44.0499	880.4645	862.4535	863.4371	852.4691	834.4585	835.4421	897.4911	879.4805	880.4645	896.4832	440.7320	426.7345	449.2454	A	2173.1360	2155.1255	2156.1091	2147.1567	2129.1462	2130.1296	1087.0680	1074.0784	19
11	72.0812	979.5325	961.5219	962.5055	951.5375	933.5269	934.5105	996.5595	978.5490	979.5325	995.5516	490.2662	476.2687	498.7798	V	2102.0989	2084.0884	2085.0720	2076.1196	2058.1091	2059.0925	1051.5494	1038.5598	18
12	101.0714	1107.5911	1089.5806	1090.5641	1079.5961	1061.5856	1062.5691	1124.5706	1106.6075	1107.5911	1123.6102	554.2955	540.2980	562.8090	Q	2003.0305	1985.0199	1986.0035	1977.0511	1959.0406	1960.0271	1002.0153	989.0256	17
13	102.0554	1236.6337	1218.6232	1219.6067	1208.6387	1190.6282	1191.6117	1253.6606	1235.6501	1236.6337	1252.6528	618.8168	604.8193	627.3303	E	1874.9719	1856.9613	1857.9449	1848.9929	1830.9821	1832.0149	937.9860	924.9963	16
14	86.0969	1349.7177	1331.7072	1332.6907	1321.7227	1303.7122	1304.6957	1366.7446	1348.7341	1349.7177	1365.7368	675.3588	661.3613	683.8723	L	1745.9293	1727.9187	1728.9023	1719.9521	1701.9395	1702.9230	873.4647	860.4750	15
15	44.0499	1420.7548	1402.7443	1403.7278	1392.7598	1374.7493	1375.7328	1437.7817	1419.7712	1420.7548	1436.7739	710.8774	696.8799	719.3909	A	1632.8453	1614.8347	1615.8184	1606.8660	1588.8555	1589.8390	816.9227	803.9330	14
16	129.1139	1576.8564	1558.8453	1559.8289	1548.8608	1530.8503	1531.8339	1593.8828	1575.8723	1576.8564	1592.8750	788.9279	774.9304	797.4414	R	1561.8082	1543.7976	1544.7812	1535.8289	1517.8184	1518.8019	781.4041	768.4144	13
17	44.0499	1647.8938	1629.8824	1630.8660	1619.8979	1601.8875	1602.8710	1664.9199	1646.9094	1647.8938	1663.9121	824.4465	810.4490	832.9600	A	1405.7070	1387.6964	1388.6801	1379.7277	1361.7172	1362.7007	703.3535	690.3638	12
18	86.0969	1760.9738	1742.9666	1743.9501	1732.9821	1714.9716	1715.9551	1778.0040	1759.9935	1760.9738	1776.9962	880.9885	866.9910	889.5020	L	1334.6699	1316.6593	1317.6429	1308.6906	1290.6801	1291.6636	667.8350	654.8453	11
19	44.0499	1832.0149	1814.0037	1814.9872	1804.0201	1786.0087	1786.9922	1848.9929	1831.0006	1832.0149	1848.0333	916.5071	902.5096	925.0206	A	1221.5889	1203.5783	1204.5590	1195.6066	1177.5961	1178.5796	611.2930	598.3033	10
20	110.0717	1969.0734	1951.0626	1952.0461	1941.0780	1923.0676	1924.0511	1986.1001	1968.0896	1969.0734	1985.0923	985.0636	971.0391	993.5500	H	1150.5488	1132.5382	1133.5219	1124.5706	1106.5590	1107.5425	575.7744	562.7847	9
21	86.0969	2082.1572	2064.1467	2065.1301	2054.1628	2036.1517	2037.1353	2099.1843	2081.1736	2082.1572	2098.1765	1041.5786	1027.5812	1050.0922	L	1013.4899	995.4793	996.4629	987.5107	969.4999	970.4835	507.2449	494.2552	8
22	86.0969	2195.2412	2177.2307	2178.2141	2167.2556	2149.2356	2150.2192	2212.2683	2194.2576	2195.2412	2211.2605	1098.1206	1084.1232	1106.6342	L	900.4058	882.3953	883.3788	874.4272	856.4159	857.3995	450.7029	437.7132	7
23	102.0554	2324.2844	2306.2732	2307.2566	2296.2888	2278.2781	2279.2617	2341.3108	2323.3000	2324.2844	2340.3030	1162.6418	1148.6444	1171.1554	E	787.3218	769.3112	770.2948	761.3439	743.3326	744.3154	394.1609	381.1712	6
24	44.0499	2395.3218	2377.3103	2378.2937	2367.3259	2349.3152	2350.2988	2412.3479	2394.3372	2395.3218	2411.3401	1198.1604	1184.1630	1206.6740	A	658.2792	640.2686	641.2522	632.3005	614.2892	615.2728	329.6396	316.6499	5
25	102.0554	2524.3652	2506.3530	2507.3364	2496.3687	2478.3579	2479.3415	2541.3906	2523.3799	2524.3652	2540.3828	1262.6818	1248.6843	1271.1953	E	587.2421	569.2315	570.2151	561.2633	543.2521	544.2357	294.1210	281.1313	4
26	129.1139	2650.4648	2632.4541	2633.4375	2622.4697	2604.4590	2605.4426	2697.4917	2679.4810	2680.4648	2696.4839	1340.7323	1326.7349	1349.2458	R	458.1995	440.1889	441.1725	432.2207	414.2095	415.1931	229.5997	216.6100	3
27	101.0714	2808.5239	2790.5127	2791.4961	2780.5283	2762.5176	2763.5012	2825.5503	2807.5396	2808.5239	2824.5425	1404.7616	1390.7642	1413.2751	Q	302.0984	284.0878	285.0714	276.1190	258.1084	259.0920	151.5492	138.5595	2
28	102.0554														E	174.0398	156.0292	157.0128	148.0604	130.0499	131.0334	87.5199	74.5302	1

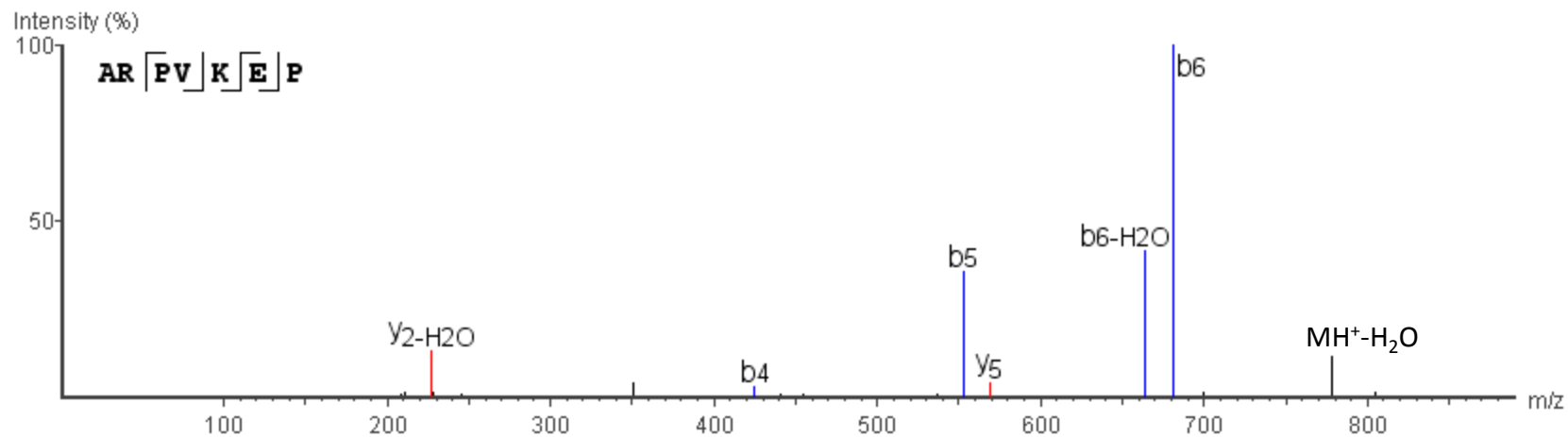


S.ARPVKEP.R

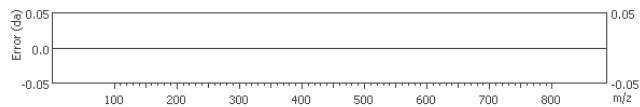
m/z=398.7381

Error=1.8ppm

Z=2



#	Immonium	b	b-H2O	b-NH3	a	a-H2O	a-NH3	c	c-H2O	c-NH3	c-H	b (2+)	a (2+)	c (2+)	Seq	x	x-H2O	x-NH3	y	y-H2O	y-NH3	x (2+)	y (2+)	#		
1	44.0499	72.0449	54.0344	55.0179	44.0499	26.0394	27.0229	89.0719	71.0614	72.0449	88.0641	36.5225	22.5250	45.0360	A											7
2	129.1139	228.1460	210.1355	211.1190	200.1510	182.1405	183.1240	245.1730	227.1625	228.1460	244.1652	114.5730	100.5755	123.0865	R	751.4098	733.3992	734.3828	725.4304	707.4199	708.4034	376.2049	363.2152	6		
3	70.0656	325.1988	307.1882	308.1718	297.2038	279.1932	280.1768	342.2258	324.2152	325.1988	341.2180	163.0994	149.1019	171.6129	P	595.3087	577.2981	578.2816	569.3297	551.3187	552.3023	298.1543	285.1646	5		
4	72.0812	424.2668	406.2567	407.2402	396.2722	378.2617	379.2452	441.2942	423.2837	424.2668	440.2864	212.6336	198.6361	221.1471	V	498.2559	480.2454	481.2289	472.2766	454.2660	455.2496	249.6280	236.6383	4		
5	101.1078	552.3616	534.3516	535.3352	524.3672	506.3566	507.3402	569.3892	551.3787	552.3616	568.3813	276.6811	262.6836	285.1946	K	399.1875	381.1769	382.1605	373.2081	355.1976	356.1812	200.0938	187.1041	3		
6	102.0554	681.4047	663.3940	664.3777	653.4097	635.3992	636.3828	698.4318	680.4212	681.4047	697.4239	341.2024	327.2049	349.7159	E	271.0925	253.0820	254.0655	245.1132	227.1027	228.0862	136.0463	123.0566	2		
7	70.0656														P	142.0499	124.0394	125.0229	116.0707	98.0600	99.0436	71.5250	58.5353	1		

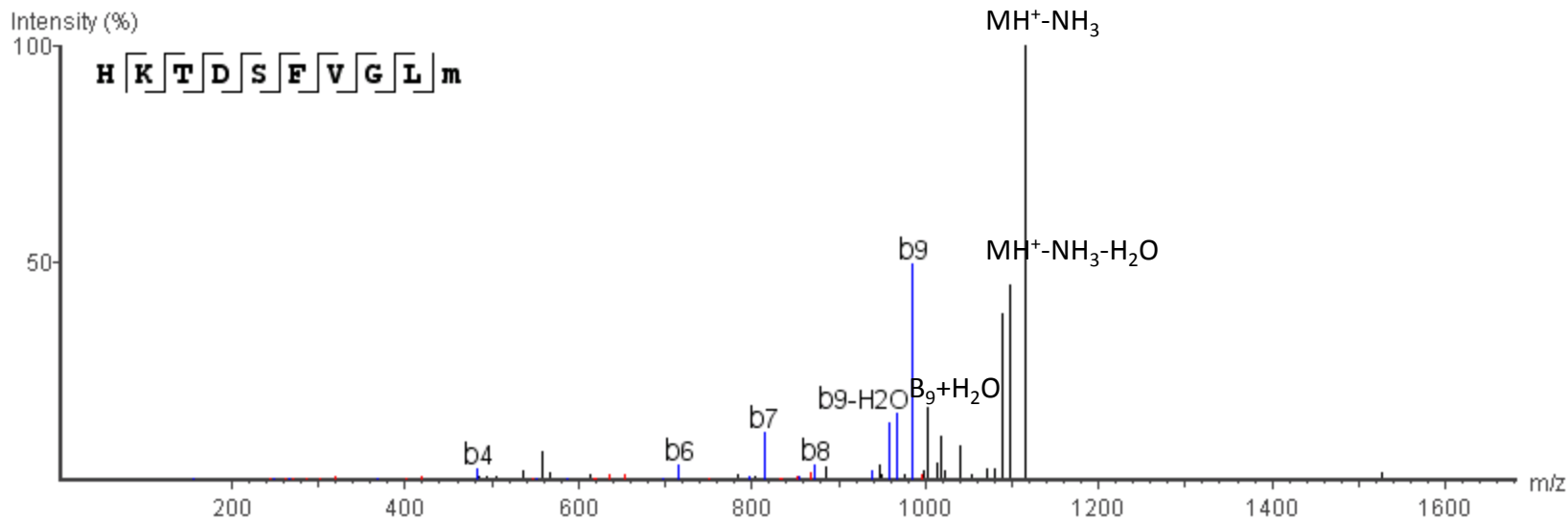


R.HKTDSFVGLM(-.98)

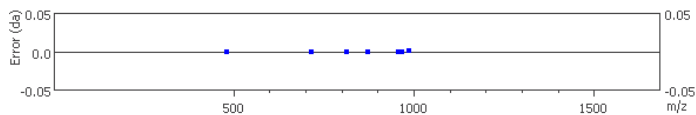
m/z=567.2918

Error=-0.8ppm

Z=2



#	Immonium	b	b-H2O	b-NH3	a	a-H2O	a-NH3	c	c-H2O	c-NH3	c-H	b(2+)	a(2+)	c(2+)	Seq	x	x-H2O	x-NH3	y	y-H2O	y-NH3	x(2+)	y(2+)	#		
1	110.0717	138.0667	120.0562	121.0397	110.0717	92.0612	93.0447	155.0937	137.0832	138.0667	154.0859	69.5334	55.5359	78.0469	H											10
2	101.1078	266.1617	248.1511	249.1347	238.1667	220.1561	221.1397	283.1887	265.1781	266.1617	282.1809	133.5808	119.5833	142.0943	K	1022.5016	1004.4911	1005.4746	996.5223	978.5117	979.4953	511.7509	498.7611	9		
3	74.0605	367.2094	349.1988	350.1824	339.2144	321.2038	322.1874	384.2364	366.2258	367.2094	383.2285	184.1047	170.1072	192.6182	T	894.4067	876.3961	877.3796	868.4273	850.4167	851.4003	447.7033	434.7137	8		
4	88.0398	482.2358	464.2257	465.2093	454.2413	436.2307	437.2143	499.2633	481.2527	482.2358	498.2555	241.6181	227.6207	250.1317	D	793.3590	775.3484	776.3320	767.3796	749.3691	750.3527	397.1795	384.1898	7		
5	60.0449	569.2683	551.2578	552.2413	541.2733	523.2628	524.2463	586.2953	568.2848	569.2683	585.2875	285.1342	271.1367	293.6477	S	678.3320	660.3215	661.3051	652.3527	634.3421	635.3257	339.6660	326.6763	6		
6	120.0812	716.3371	698.3262	699.3098	688.3417	670.3312	671.3148	733.3638	715.3532	716.3371	732.3559	358.6684	344.6709	367.1819	F	591.3000	573.2895	574.2731	565.3207	547.3101	548.2937	296.1500	283.1603	5		
7	72.0812	815.4038	797.3946	798.3782	787.4102	769.3996	770.3832	832.4322	814.4216	815.4038	831.4243	408.2026	394.2051	416.7161	V	444.2316	426.2211	427.2046	418.2523	400.2417	401.2253	222.6158	209.6261	4		
8	30.0343	872.4254	854.4161	855.3997	844.4316	826.4211	827.4047	889.4537	871.4431	872.4254	888.4458	436.7133	422.7158	445.2268	G	345.1632	327.1526	328.1362	319.1838	301.1733	302.1569	173.0816	160.0919	3		
9	86.0969	985.5088	967.5007	968.4837	957.5145	939.5051	940.4887	1002.5377	984.5272	985.5088	1001.5298	493.2553	479.2578	501.7689	L	288.1418	270.1312	271.1147	262.1624	244.1518	245.1354	144.5709	131.5812	2		
10	103.0733														M(-.98)	175.0577	157.0471	158.0307	149.0783	131.0678	132.0513	88.0288	75.0392	1		

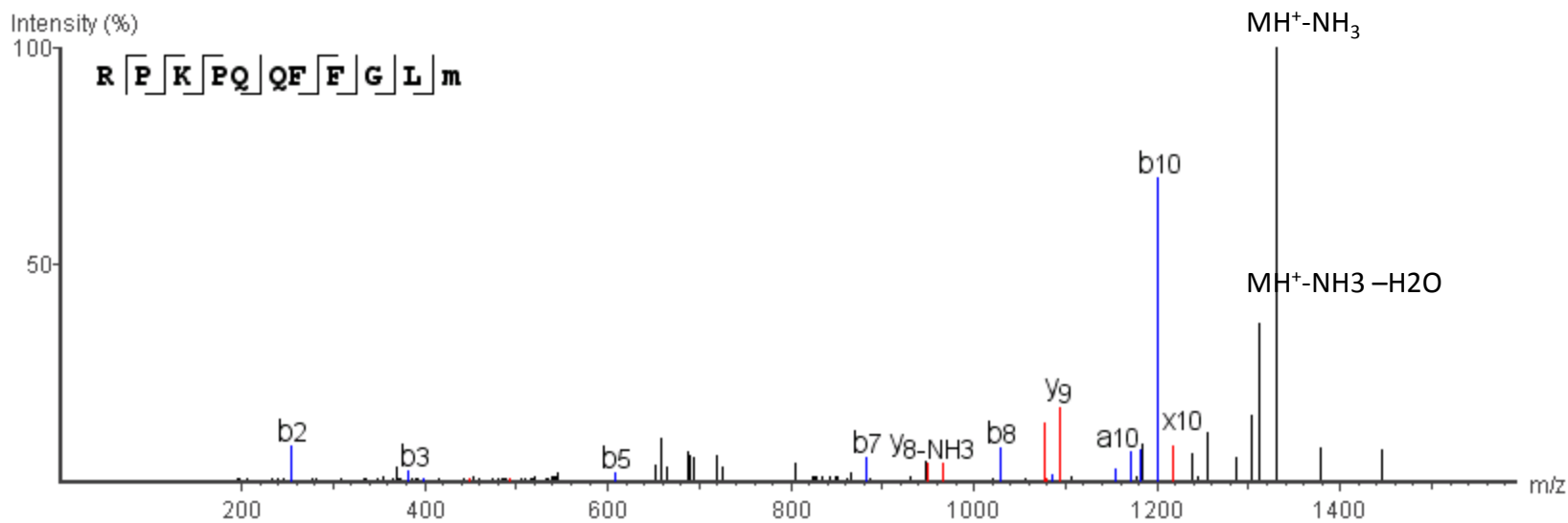


R.RPKPQQFFGLM(-.98).G

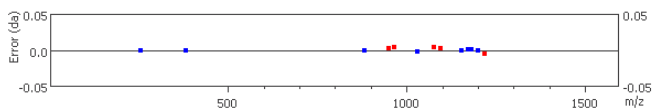
m/z=674.3698

Error=-2.4ppm

Z=2



#	Immonium	b	b-H2O	b-NH3	a	a-H2O	a-NH3	c	c-H2O	c-NH3	c-H	b (2+)	a (2+)	c (2+)	Seq	x	x-H2O	x-NH3	y	y-H2O	y-NH3	x (2+)	y (2+)	#	
1	129.1139	157.1089	139.0984	140.0819	129.1139	111.1034	112.0869	174.1359	156.1254	157.1089	173.1281	79.0545	65.0570	87.5680	R										11
2	70.0656	254.1612	236.1511	237.1347	226.1667	208.1561	209.1397	271.1887	253.1781	254.1612	270.1809	127.5808	113.5833	136.0943	P	1217.6237	1199.6071	1200.5907	1191.6383	1173.6278	1174.6113	609.3088	596.3192	10	
3	101.1078	382.2561	364.2461	365.2296	354.2616	336.2511	337.2346	399.2836	381.2731	382.2561	398.2758	191.6283	177.6308	200.1418	K	1120.5649	1102.5543	1103.5380	1094.5817	1076.5751	1077.5537	560.7825	547.7928	9	
4	70.0656	479.3094	461.2988	462.2824	451.3144	433.3038	434.2874	496.3364	478.3258	479.3094	495.3286	240.1547	226.1572	248.6682	P	992.4700	974.4594	975.4430	966.4849	948.4800	949.4600	496.7350	483.7453	8	
5	101.0714	607.3680	589.3574	590.3410	579.3730	561.3624	562.3460	624.3950	606.3845	607.3680	623.3871	304.1840	290.1865	312.6975	Q	895.4172	877.4066	878.3901	869.4378	851.4272	852.4108	448.2086	435.2189	7	
6	101.0714	735.4265	717.4160	718.3995	707.4315	689.4210	690.4045	752.4536	734.4430	735.4265	751.4457	368.2133	354.2158	376.7268	Q	767.3586	749.3480	750.3315	741.3792	723.3687	724.3522	384.1793	371.1896	6	
7	120.0812	882.4943	864.4844	865.4680	854.4999	836.4894	837.4730	899.5220	881.5114	882.4943	898.5141	441.7475	427.7500	450.2610	F	639.3000	621.2895	622.2731	613.3207	595.3101	596.2937	320.1500	307.1603	5	
8	120.0812	1029.5656	1011.5528	1012.5364	1001.5684	983.5578	984.5414	1046.5903	1028.5798	1029.5656	1045.5825	515.2817	501.2842	523.7952	F	492.2316	474.2211	475.2046	466.2523	448.2417	449.2253	246.6158	233.6261	4	
9	30.0343	1086.5848	1068.5743	1069.5579	1058.5898	1040.5793	1041.5629	1103.6118	1085.6013	1086.5848	1102.6040	543.7924	529.7949	552.3059	G	345.1632	327.1526	328.1362	319.1838	301.1733	302.1569	173.0816	160.0919	3	
10	86.0969	1199.6683	1181.6558	1182.6418	1171.6711	1153.6633	1154.6478	1216.6958	1198.6853	1199.6683	1215.6880	600.3344	586.3369	608.8479	L	288.1418	270.1312	271.1147	262.1624	244.1518	245.1354	144.5709	131.5812	2	
11	103.0733														M(-.98)	175.0577	157.0471	158.0307	149.0783	131.0678	132.0513	88.0288	75.0392	1	

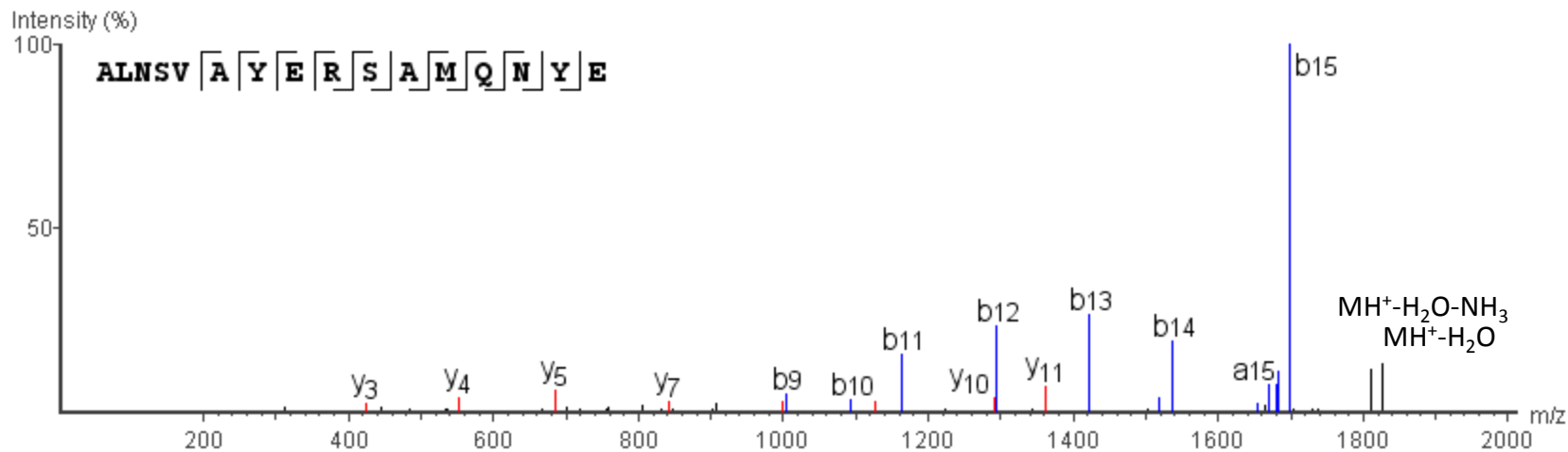


R.ALNSVAYERSAMQNYE.R

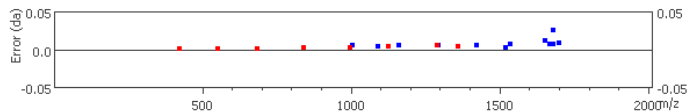
m/z=923.425

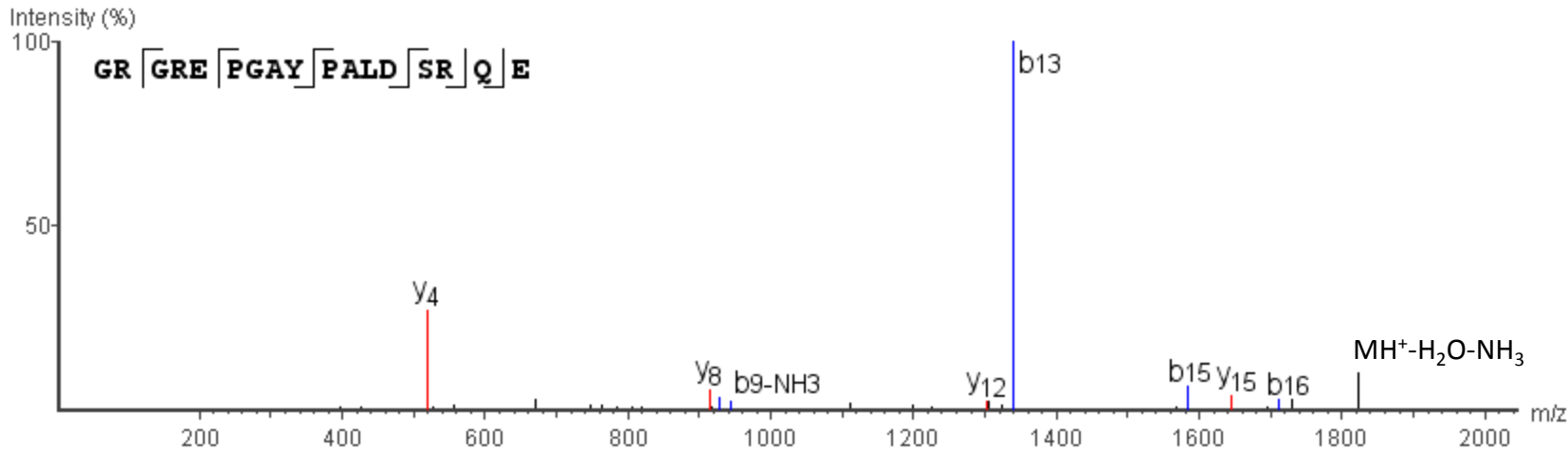
Error=-0.5ppm

Z=2

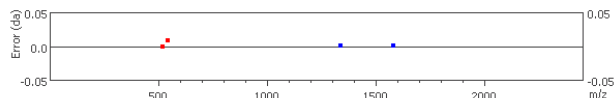


#	Immonium	b	b-H2O	b-NH3	a	a-H2O	a-NH3	c	c-H2O	c-NH3	c-H	b(2+)	a(2+)	c(2+)	Seq	x	x-H2O	x-NH3	y	y-H2O	y-NH3	x(2+)	y(2+)	#	
1	44.0499	72.0449	54.0344	55.0179	44.0499	26.0394	27.0229	89.0719	71.0614	72.0449	88.0641	36.5225	22.5250	45.0360	A										16
2	86.0969	185.1290	167.1184	168.1020	157.1340	139.1234	140.1070	202.1560	184.1454	185.1290	201.1482	93.0645	79.0670	101.5780	L	1800.7858	1782.7751	1783.7588	1774.8064	1756.7959	1757.7794	900.8929	887.9032	15	
3	87.0558	299.1719	281.1613	282.1449	271.1769	253.1664	254.1499	316.1989	298.1884	299.1719	315.1911	150.0860	136.0885	158.5995	N	1687.7018	1669.6912	1670.6748	1661.7224	1643.7119	1644.6954	844.3509	831.3612	14	
4	60.0449	386.2039	368.1934	369.1770	358.2090	340.1984	341.1819	403.2310	385.2204	386.2039	402.2231	193.6020	179.6045	202.1155	S	1573.6588	1555.6482	1556.6318	1547.6794	1529.6689	1530.6525	787.3294	774.3397	13	
5	72.0812	485.2723	467.2618	468.2454	457.2773	439.2668	440.2504	502.2993	484.2888	485.2723	501.2915	243.1362	229.1387	251.6497	V	1496.6268	1468.6162	1469.5999	1460.6475	1442.6370	1443.6205	743.8134	730.8237	12	
6	44.0499	556.3094	538.2989	539.2825	528.3145	510.3039	511.2875	573.3365	555.3259	556.3094	572.3286	278.6547	264.6572	287.1682	A	1387.5583	1369.5477	1370.5314	1361.5735	1343.5685	1344.5520	694.2792	681.2895	11	
7	136.0761	719.3728	701.3622	702.3458	691.3778	673.3672	674.3508	736.3998	718.3893	719.3728	735.3920	360.1864	346.1889	368.6999	Y	1316.5212	1298.5106	1299.4943	1290.5349	1272.5314	1273.5149	658.7606	645.7709	10	
8	102.0554	848.4154	830.4048	831.3884	820.4204	802.4099	803.3934	865.4424	847.4319	848.4154	864.4346	424.7077	410.7102	433.2212	E	1153.4579	1135.4473	1136.4309	1127.4739	1109.4680	1110.4515	577.2289	564.2393	9	
9	129.1139	1004.5100	986.5059	987.4895	976.5215	958.5109	959.4945	1021.5435	1003.5330	1004.5100	1020.5356	502.7582	488.7607	511.2718	R	1024.4153	1006.4048	1007.3883	998.4315	980.4254	981.4090	512.7076	499.7180	8	
10	60.0449	1091.5427	1073.5380	1074.5215	1063.5535	1045.5430	1046.5265	1108.5754	1090.5649	1091.5427	1107.5676	546.2742	532.2767	554.7877	S	868.3143	850.3037	851.2872	842.3315	824.3243	825.3079	434.6571	421.6674	7	
11	44.0499	1162.5793	1144.5751	1145.5586	1134.5906	1116.5801	1117.5636	1179.6125	1161.6021	1162.5793	1178.6047	581.7928	567.7953	590.3063	A	781.2822	763.2717	764.2552	755.3029	737.2923	738.2759	391.1411	378.1514	6	
12	104.0533	1293.6193	1275.6156	1276.5991	1265.6311	1247.6206	1248.6041	1310.6531	1292.6426	1293.6193	1309.6453	647.3130	633.3156	655.8265	M	710.2451	692.2346	693.2181	684.2629	666.2552	667.2388	355.6226	342.6329	5	
13	101.0714	1421.6770	1403.6742	1404.6577	1393.6897	1375.6792	1376.6627	1438.7117	1420.7012	1421.6770	1437.7039	711.3423	697.3448	719.8558	Q	579.2046	561.1940	562.1776	553.2225	535.2147	536.1982	290.1023	277.1126	4	
14	87.0558	1535.7195	1517.7172	1518.6973	1507.7327	1489.7222	1490.7057	1552.7546	1534.7441	1535.7195	1551.7468	768.3638	754.3663	776.8773	N	451.1460	433.1355	434.1190	425.1648	407.1561	408.1397	226.0730	213.0833	3	
15	136.0761	1698.7816	1680.7731	1681.7561	1670.7869	1652.7854	1653.7651	1715.8179	1697.8074	1698.7816	1714.8101	849.8954	835.8979	858.4089	Y	337.1031	319.0925	320.0761	311.1237	293.1132	294.0967	169.0515	156.0619	2	
16	102.0554														E	174.0398	156.0292	157.0128	148.0604	130.0499	131.0334	87.5199	74.5302	1	





#	Immonium	b	b-H2O	b-NH3	a	a-H2O	a-NH3	c	c-H2O	c-NH3	c-H	b(2+)	a(2+)	c(2+)	Seq	x	x-H2O	x-NH3	y	y-H2O	y-NH3	x(2+)	y(2+)	#
1	30.0343	58.0293	40.0187	41.0023	30.0343	12.0237	13.0073	75.0563	57.0457	58.0293	74.0485	29.5146	15.5171	38.0281	G									17
2	129.1139	214.1304	196.1198	197.1034	186.1354	168.1248	169.1084	231.1574	213.1468	214.1304	230.1496	107.5652	93.5677	116.0787	R	1827.8733	1809.8627	1810.8463	1801.8939	1783.8834	1784.8669	914.4366	901.4470	16
3	30.0343	271.1519	253.1413	254.1249	243.1569	225.1463	226.1299	286.1789	270.1683	271.1519	287.1711	136.0759	122.0784	144.5894	G	1671.7722	1653.7616	1654.7452	1645.7928	1627.7823	1628.7659	836.3861	823.3964	15
4	129.1139	427.2529	409.2424	410.2260	399.2579	381.2474	382.2310	444.2799	426.2694	427.2529	443.2721	214.1265	200.1290	222.6400	R	1614.7507	1596.7401	1597.7238	1588.7714	1570.7609	1571.7444	807.8754	794.8857	14
5	102.0554	556.2955	538.2850	539.2686	528.3005	510.2900	511.2736	573.3226	555.3120	556.2955	572.3147	278.6478	264.6503	287.1613	E	1458.6495	1440.6389	1441.6226	1432.6702	1414.6597	1415.6432	729.8248	716.8351	13
6	70.0656	653.3483	635.3377	636.3213	625.3533	607.3427	608.3263	670.3753	652.3647	653.3483	669.3674	327.1741	313.1766	335.6877	P	1329.6071	1311.5964	1312.5801	1303.6277	1285.6172	1286.6007	665.3035	652.3138	12
7	30.0343	710.3698	692.3592	693.3428	682.3748	664.3642	665.3478	727.3968	709.3862	710.3698	726.3889	355.6849	341.6874	364.1984	G	1232.5542	1214.5436	1215.5272	1206.5748	1188.5643	1189.5479	616.7771	603.7874	11
8	44.0499	781.4069	763.3963	764.3799	753.4119	735.4013	736.3849	796.4339	780.4233	781.4069	797.4260	391.2034	377.2059	399.7169	A	1175.5328	1157.5222	1158.5059	1149.5535	1131.5430	1132.5265	588.2664	575.2767	10
9	136.0761	944.4702	926.4597	927.4432	916.4752	898.4647	899.4482	961.4973	943.4867	944.4702	960.4894	472.7351	458.7376	481.2486	Y	1104.4957	1086.4851	1087.4688	1078.5164	1060.5059	1061.4894	552.7479	539.7582	9
10	70.0656	1041.5229	1023.5125	1024.4960	1013.5280	995.5174	996.5010	1058.5499	1040.5394	1041.5229	1057.5421	521.2615	507.2640	529.7750	P	941.4324	923.4218	924.4054	915.4530	897.4424	898.4260	471.2162	458.2265	8
11	44.0499	1112.5601	1094.5496	1095.5331	1084.5651	1066.5546	1067.5381	1129.5870	1111.5765	1112.5601	1128.5792	556.7800	542.7825	565.2935	A	844.3796	826.3690	827.3525	818.4002	800.3896	801.3732	422.6898	409.7001	7
12	86.0969	1225.6442	1207.6337	1208.6172	1197.6492	1179.6387	1180.6222	1242.6711	1224.6606	1225.6442	1241.6633	613.3221	599.3246	621.8356	L	773.3425	755.3319	756.3154	747.3631	729.3525	730.3361	387.1712	374.1815	6
13	88.0398	1340.6694	1322.6605	1323.6440	1312.6760	1294.6655	1295.6490	1357.6980	1339.6875	1340.6694	1356.6902	670.8355	656.8380	679.3490	D	660.2584	642.2479	643.2314	634.2791	616.2685	617.2521	330.6292	317.6395	5
14	60.0449	1427.7031	1409.6926	1410.6761	1399.7081	1381.6976	1382.6812	1444.7301	1426.7196	1427.7031	1443.7223	714.3516	700.3541	722.8651	S	545.2220	527.2209	528.2045	519.2520	501.2416	502.2252	273.1158	260.1261	4
15	129.1139	1583.8011	1565.7937	1566.7772	1555.8092	1537.7987	1538.7822	1600.8312	1582.8207	1583.8011	1599.8234	792.4021	778.4046	800.9156	R	458.1995	440.1889	441.1725	432.2201	414.2095	415.1931	229.5997	216.6100	3
16	101.0714	1711.8628	1693.8523	1694.8358	1683.8678	1665.8573	1666.8408	1728.8898	1710.8793	1711.8628	1727.8820	856.4314	842.4339	864.9449	Q	302.0984	284.0878	285.0714	276.1190	258.1084	259.0920	151.5492	138.5595	2
17	102.0554														E	174.0398	156.0292	157.0128	148.0604	130.0499	131.0334	87.5199	74.5302	1

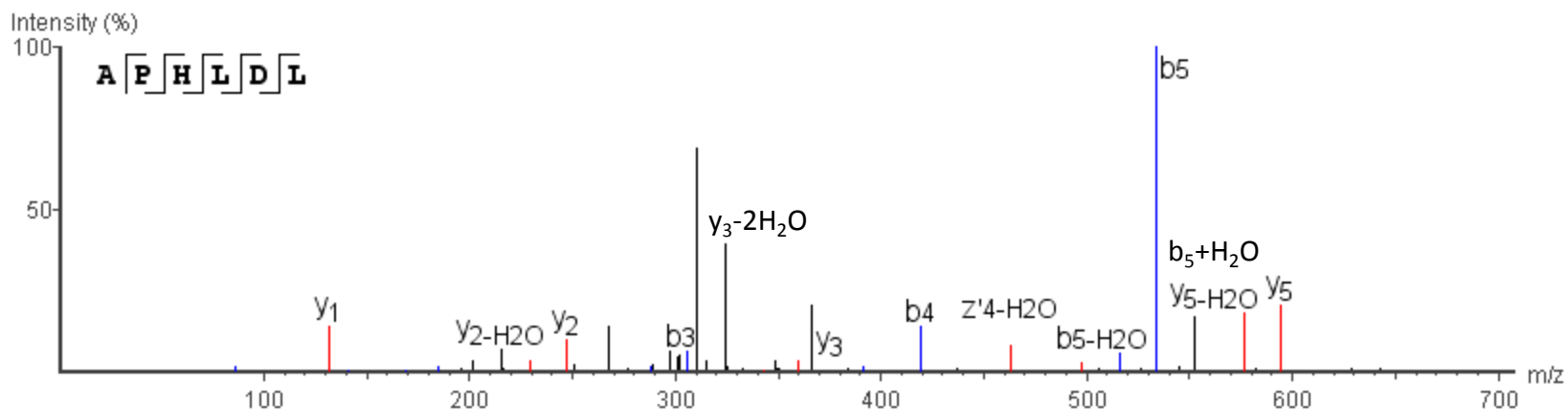


R.APHLDL.K

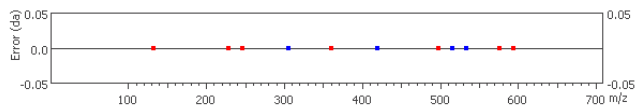
m/z=333.1851

Z=2

Error=2ppm



#	Immonium	b	b-H2O	b-NH3	a	a-H2O	a-NH3	c	c-H2O	c-NH3	c-H	b (2+)	a (2+)	c (2+)	Seq	x	x-H2O	x-NH3	y	y-H2O	y-NH3	x (2+)	y (2+)	#	
1	44.0499	72.0449	54.0344	55.0179	44.0499	26.0394	27.0229	89.0719	71.0614	72.0449	88.0641	36.5225	22.5250	45.0360	A										6
2	70.0696	169.0977	151.0871	152.0707	141.1027	123.0921	124.0757	186.1247	168.1141	169.0977	185.1169	85.0489	71.0513	93.5623	P	620.3040	602.2934	603.2770	594.3247	576.3142	577.2976	310.6520	297.6623	5	
3	110.0717	306.1563	288.1460	289.1296	278.1616	260.1510	261.1346	323.1836	305.1730	306.1563	322.1758	153.5783	139.5808	162.0918	H	523.2512	505.2406	506.2242	497.2711	479.2612	480.2448	262.1256	249.1359	4	
4	86.0969	419.2404	401.2301	402.2137	391.2457	373.2351	374.2187	436.2677	418.2571	419.2404	435.2599	210.1203	196.1228	218.6338	L	386.1923	368.1817	369.1653	360.2132	342.2023	343.1859	193.5961	180.6064	3	
5	88.0398	534.2669	516.2566	517.2406	506.2726	488.2620	489.2456	551.2946	533.2841	534.2669	550.2867	267.6338	253.6363	276.1473	D	273.1082	255.0976	256.0812	247.1290	229.1183	230.1018	137.0541	124.0644	2	
6	86.0969														L	158.0812	140.0707	141.0542	132.1017	114.0913	115.0749	79.5406	66.5509	1	

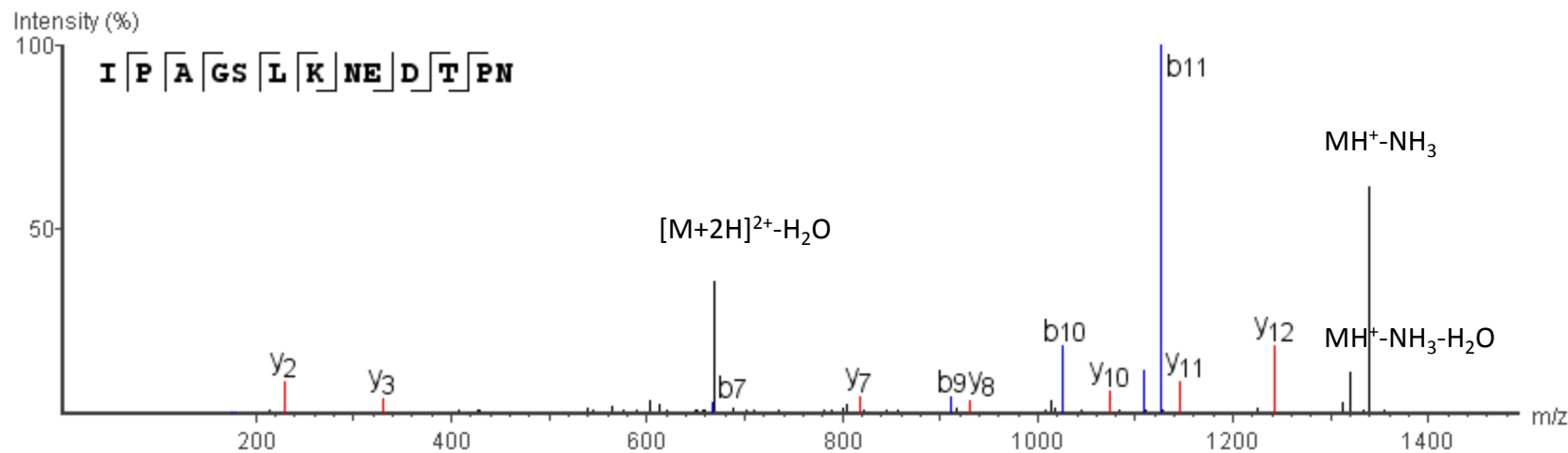


R.IPAGSLKNEPTN.R

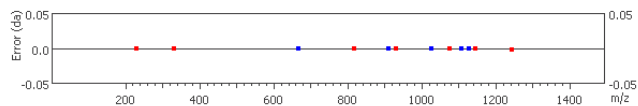
m/z=678.3437

Error=0ppm

Z=2



#	Immonium	b	b-H2O	b-NH3	a	a-H2O	a-NH3	c	c-H2O	c-NH3	c-H	b (2+)	a (2+)	c (2+)	Seq	x	x-H2O	x-NH3	y	y-H2O	y-NH3	x (2+)	y (2+)	#	
1	86.0969	114.0919	96.0813	97.0649	86.0969	68.0863	69.0699	131.1189	113.1083	114.0919	130.1111	57.5459	43.5484	66.0594	I										13
2	70.0656	211.1446	193.1341	194.1176	183.1496	165.1391	166.1226	228.1716	210.1611	211.1446	227.1638	106.0723	92.0748	114.5858	P	1268.5754	1250.5648	1251.5485	1242.5981	1224.5856	1225.5691	634.7877	621.7980	12	
3	44.0499	282.1817	264.1712	265.1548	254.1867	236.1762	237.1597	299.2087	281.1982	282.1817	298.2009	141.5909	127.5934	150.1044	A	1171.5226	1153.5120	1154.4956	1145.5428	1127.5327	1128.5162	586.2613	573.2716	11	
4	30.0343	339.2032	321.1926	322.1762	311.2082	293.1976	294.1812	356.2302	338.2196	339.2032	355.2224	170.1016	156.1041	178.6151	G	1100.4855	1082.4749	1083.4585	1074.5051	1056.4956	1057.4791	550.7427	537.7531	10	
5	60.0449	426.2352	408.2247	409.2083	398.2402	380.2297	381.2133	443.2622	425.2517	426.2352	442.2544	213.6176	199.6201	222.1311	S	1043.4640	1025.4535	1026.4370	1017.4847	999.4741	1000.4577	522.2320	509.2423	9	
6	86.0969	539.3193	521.3087	522.2923	511.3243	493.3137	494.2973	556.3463	538.3358	539.3193	555.3384	270.1596	256.1621	278.6732	L	956.4320	938.4214	939.4050	930.4532	912.4421	913.4257	478.7160	465.7263	8	
7	101.1078	667.4139	649.4037	650.3873	639.4193	621.4087	622.3923	684.4413	666.4307	667.4139	683.4334	334.2071	320.2096	342.7206	K	843.3480	825.3374	826.3209	817.3682	799.3580	800.3416	422.1740	409.1843	7	
8	87.0558	781.4572	763.4466	764.4302	753.4622	735.4516	736.4352	798.4842	780.4736	781.4572	797.4763	391.2286	377.2311	399.7421	N	715.2531	697.2425	698.2261	689.2737	671.2631	672.2467	358.1265	345.1368	6	
9	102.0554	910.4988	892.4892	893.4728	882.5048	864.4942	865.4778	927.5268	909.5162	910.4988	926.5189	455.7499	441.7524	464.2634	E	601.2101	583.1995	584.1831	575.2307	557.2202	558.2037	301.1050	288.1154	5	
10	88.0398	1025.5258	1007.5162	1008.4998	997.5317	979.5212	980.5048	1042.5537	1024.5432	1025.5258	1041.5459	513.2634	499.2659	521.7769	D	472.1675	454.1570	455.1405	446.1881	428.1776	429.1612	236.5838	223.5941	4	
11	74.0605	1126.5735	1108.5631	1109.5474	1098.5793	1080.5688	1081.5524	1143.6013	1125.5908	1126.5735	1142.5935	563.7872	549.7897	572.3007	T	357.1406	339.1300	340.1136	331.1615	313.1506	314.1342	179.0703	166.0806	3	
12	70.0656	1223.6272	1205.6167	1206.6002	1195.6322	1177.6217	1178.6052	1240.6542	1222.6437	1223.6272	1239.6464	612.3136	598.3161	620.8271	P	256.0929	238.0823	239.0659	230.1139	212.1030	213.0865	128.5464	115.5568	2	
13	87.0558														N	159.0401	141.0296	142.0131	133.0608	115.0502	116.0338	80.0201	67.0304	1	

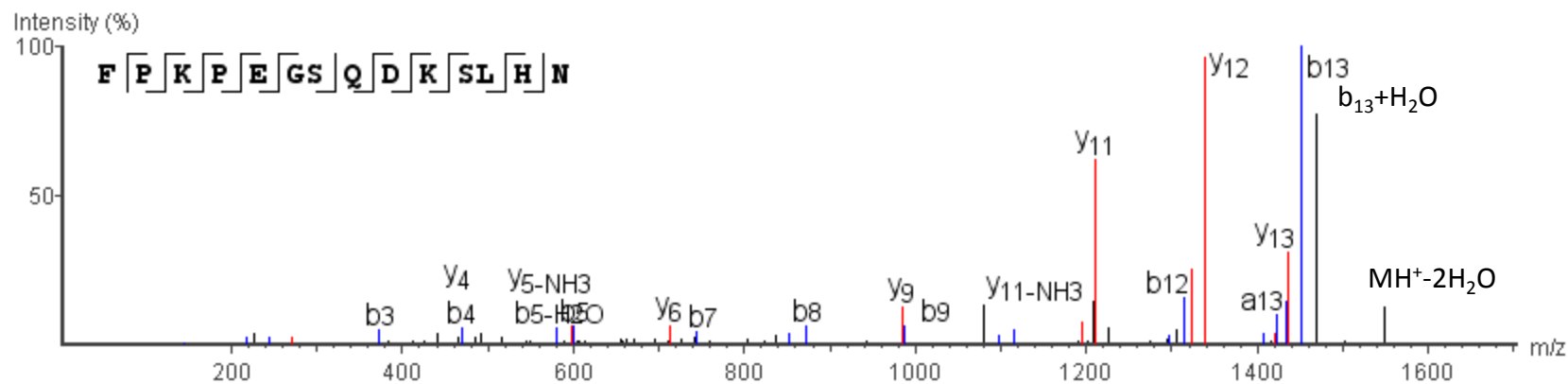


A.FPKPEGSQDKSLHN.R

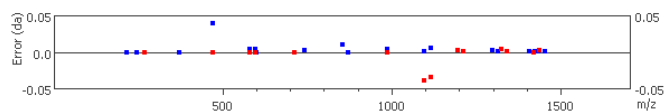
m/z=528.5979

Z=3

Error=-1.3ppm



#	Immonium	b	b-H2O	b-NH3	a	a-H2O	a-NH3	c	c-H2O	c-NH3	c-H	b (2+)	a (2+)	c (2+)	Seq	x	x-H2O	x-NH3	y	y-H2O	y-NH3	x (2+)	y (2+)	#	
1	120.0812	148.0762	130.0657	131.0492	120.0812	102.0707	103.0542	165.1032	147.0927	148.0762	164.0954	74.5381	60.5406	83.0516	F										14
2	70.0656	245.1284	227.1184	228.1020	217.1334	199.1234	200.1070	262.1560	244.1454	245.1284	261.1482	123.0645	109.0670	131.5780	P	1462.6921	1444.6815	1445.6652	1436.7094	1418.7023	1419.6851	731.8461	718.8564	13	
3	101.1078	373.2234	355.2134	356.1970	345.2289	327.2184	328.2020	390.2509	372.2404	373.2234	389.2431	187.1120	173.1145	195.6255	K	1365.6394	1347.6288	1348.6124	1339.6580	1321.6495	1322.6272	683.3197	670.3300	12	
4	70.0656	470.2354	452.2661	453.2497	442.2817	424.2711	425.2547	487.3037	469.2931	470.2354	486.2959	235.6383	221.6408	244.1518	P	1237.5444	1219.5338	1220.5175	1211.5630	1193.5546	1194.5339	619.2722	606.2825	11	
5	102.0554	599.3190	581.3038	582.2923	571.3243	553.3137	554.2973	616.3463	598.3302	599.3190	615.3384	300.1596	286.1621	308.6732	E	1140.4917	1122.4811	1123.4647	1114.5466	1096.5018	1097.5240	570.7458	557.7562	10	
6	30.0343	656.3408	638.3302	639.3138	628.3458	610.3352	611.3188	673.3678	655.3572	656.3408	672.3599	328.6704	314.6729	337.1839	G	1011.4491	993.4385	994.4221	985.4691	967.4592	968.4427	506.2245	493.2349	9	
7	60.0449	743.3683	725.3622	726.3458	715.3777	697.3672	698.3508	760.3998	742.3892	743.3683	759.3919	372.1864	358.1889	380.6999	S	954.4276	936.4171	937.4006	928.4482	910.4377	911.4213	477.7138	464.7241	8	
8	101.0714	871.4301	853.4095	854.4044	843.4363	825.4258	826.4094	888.4584	870.4478	871.4301	887.4505	436.2157	422.2182	444.7292	Q	867.3956	849.3851	850.3687	841.4163	823.4057	824.3893	434.1978	421.2081	7	
9	88.0398	986.4560	968.4477	969.4313	958.4633	940.4527	941.4363	1003.4853	985.4691	986.4560	1002.4774	493.7291	479.7316	502.2426	D	739.3370	721.3265	722.3101	713.3566	695.3471	696.3307	370.1685	357.1788	6	
10	101.1078	1114.5466	1096.5427	1097.5240	1086.5582	1068.5477	1069.5312	1131.5802	1113.5697	1114.5466	1130.5724	557.7766	543.7791	566.2901	K	624.3101	606.2995	607.2831	598.3302	580.3201	581.3038	312.6550	299.6653	5	
11	60.0449	1201.5852	1183.5747	1184.5582	1173.5902	1155.5797	1156.5632	1218.6122	1200.6017	1201.5852	1217.6044	601.2926	587.2951	609.8061	S	496.2151	478.2046	479.1881	470.2354	452.2252	453.2088	248.6076	235.6179	4	
12	86.0969	1314.6669	1296.6553	1297.6423	1286.6743	1268.6638	1269.6473	1331.6963	1313.6858	1314.6669	1330.6885	657.8347	643.8372	666.3481	L	409.1831	391.1725	392.1561	383.2037	365.1932	366.1768	205.0916	192.1019	3	
13	110.0717	1451.7258	1433.7155	1434.7013	1423.7303	1405.7228	1406.7034	1468.7552	1450.7448	1451.7258	1467.7474	726.3641	712.3666	734.8776	H	296.0990	278.0885	279.0720	270.1198	252.1091	253.0927	148.5495	135.5598	2	
14	87.0558														N	159.0401	141.0296	142.0131	133.0608	115.0502	116.0338	80.0201	67.0304	1	

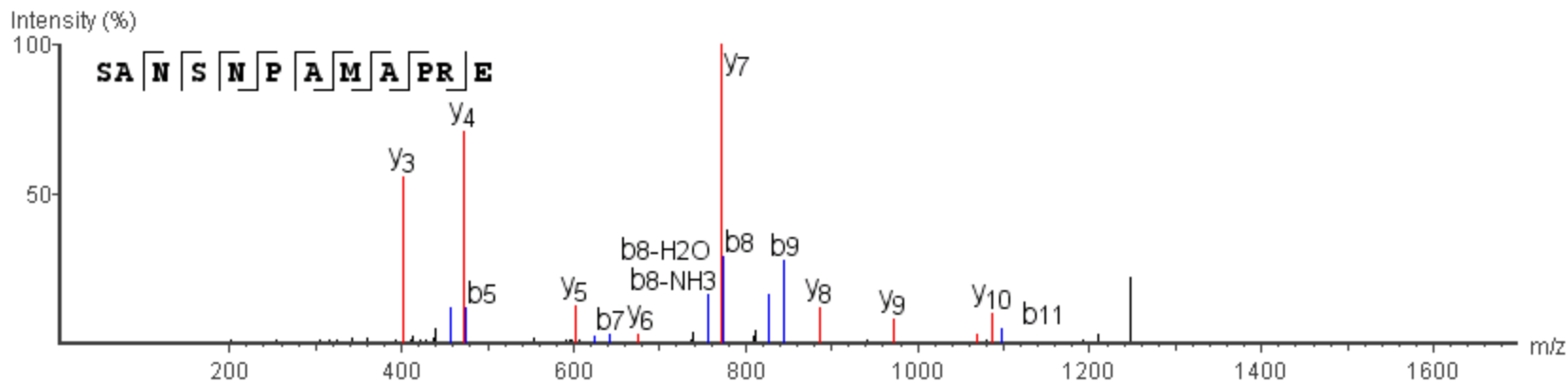


R.SANSNPAMAPRE.R

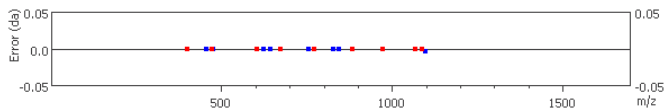
m/z=622.7891

Error=1.7ppm

Z=2



#	Inmonium	b	b-H2O	b-NH3	a	a-H2O	a-NH3	c	c-H2O	c-NH3	c-H	b (2+)	a (2+)	c (2+)	Seq	x	x-H2O	x-NH3	y	y-H2O	y-NH3	x (2+)	y (2+)	#	
1	60.0449	88.0399	70.0293	71.0129	60.0449	42.0343	43.0179	105.0669	87.0563	88.0399	104.0590	44.5199	30.5224	53.0334	S										12
2	44.0499	159.0770	141.0664	142.0500	131.0820	113.0714	114.0550	176.1040	158.0934	159.0770	175.0961	80.0385	66.0410	88.5520	A	1183.5161	1165.5055	1166.4891	1157.5367	1139.5262	1140.5098	592.2581	579.2684	11	
3	87.0558	273.1199	255.1093	256.0929	245.1249	227.1143	228.0979	290.1469	272.1363	273.1199	289.1391	137.0599	123.0624	145.5734	N	1112.4790	1094.4684	1095.4520	1086.4998	1068.4888	1069.4727	556.7395	543.7498	10	
4	60.0449	360.1519	342.1414	343.1249	332.1569	314.1464	315.1299	377.1789	359.1684	360.1519	376.1711	180.5760	166.5785	189.0895	S	998.4361	980.4255	981.4091	972.4576	954.4462	955.4297	499.7180	486.7284	9	
5	87.0558	474.1948	456.1841	457.1683	446.1998	428.1893	429.1729	491.2218	473.2113	474.1948	490.2140	237.5974	223.5999	246.1109	N	911.4041	893.3935	894.3771	885.4257	867.4141	868.3977	456.2020	443.2123	8	
6	70.0656	571.2476	553.2371	554.2206	543.2526	525.2421	526.2256	588.2747	570.2641	571.2476	587.2668	286.1238	272.1263	294.6373	P	797.3611	779.3505	780.3341	771.3825	753.3712	754.3547	399.1805	386.1909	7	
7	44.0499	642.2845	624.2742	625.2590	614.2897	596.2792	597.2628	659.3118	641.3012	642.2845	658.3039	321.6424	307.6449	330.1559	A	700.3083	682.2978	683.2814	674.3296	656.3184	657.3020	350.6542	337.6645	6	
8	104.0533	773.3253	755.3151	756.2984	745.3302	727.3196	728.3032	790.3522	772.3417	773.3253	789.3444	387.1626	373.1651	395.6761	M	629.2712	611.2607	612.2443	603.2924	585.2813	586.2649	315.1356	302.1459	5	
9	44.0499	844.3621	826.3519	827.3341	816.3673	798.3568	799.3403	861.3893	843.3788	844.3621	860.3815	422.6812	408.6837	431.1947	A	498.2307	480.2202	481.2037	472.2515	454.2408	455.2244	249.6154	236.6257	4	
10	70.0656	941.4150	923.4045	924.3881	913.4200	895.4095	896.3931	958.4421	940.4315	941.4150	957.4342	471.2075	457.2100	479.7210	P	427.1936	409.1831	410.1666	401.2151	383.2037	384.1873	214.0968	201.1071	3	
11	129.1139	1097.5197	1079.5056	1080.4891	1069.5211	1051.5106	1052.4941	1114.5431	1096.5326	1097.5197	1113.5353	549.2581	535.2606	557.7715	R	330.1409	312.1303	313.1139	304.1615	286.1509	287.1345	165.5704	152.5807	2	
12	102.0554														E	174.0398	156.0292	157.0128	148.0604	130.0499	131.0334	87.5199	74.5302	1	

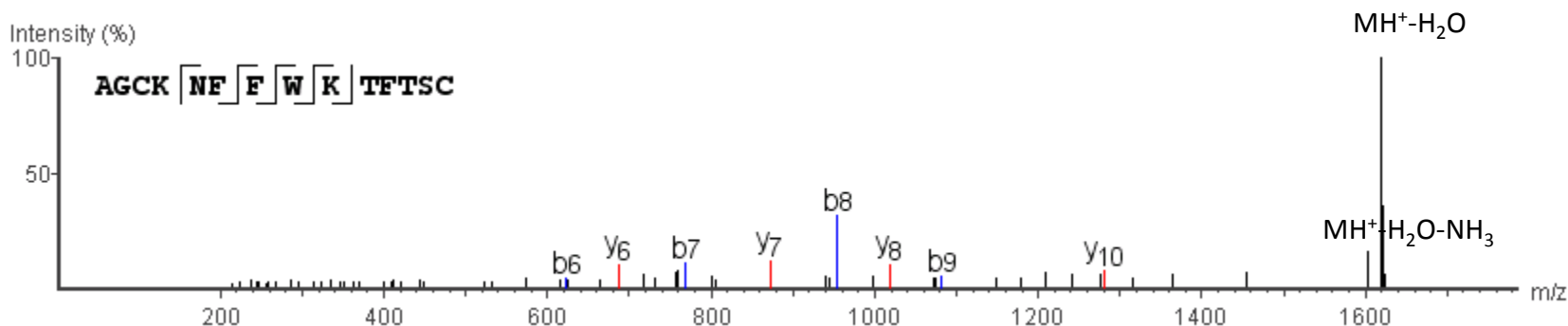


K.AGCKNFFWKTFTSC

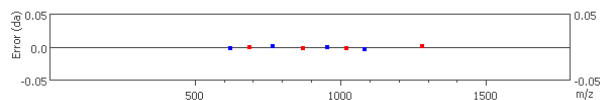
m/z=820.3743

Error=1.1ppm

Z=2



#	Immonium	b	b-H2O	b-NH3	a	a-H2O	a-NH3	c	c-H2O	c-NH3	c-H	b (2+)	a (2+)	c (2+)	Seq	x	x-H2O	x-NH3	y	y-H2O	y-NH3	x (2+)	y (2+)	#	
1	44.0499	72.0449	54.0344	55.0179	44.0499	26.0394	27.0229	89.0719	71.0614	72.0449	88.0641	36.5225	22.5250	45.0360	A										14
2	30.0343	129.0664	111.0558	112.0394	101.0714	83.0608	84.0444	146.0934	128.0828	129.0664	145.0856	65.0332	51.0357	73.5467	G	1594.6818	1576.6711	1577.6548	1568.7024	1550.6919	1551.6754	797.8409	784.8512	13	
3	76.0220	232.0756	214.0650	215.0486	204.0806	186.0700	187.0536	249.1026	231.0920	232.0756	248.0948	116.5378	102.5403	125.0513	C	1537.6604	1519.6498	1520.6334	1511.6810	1493.6705	1494.6541	769.3302	756.3405	12	
4	101.1078	360.1705	342.1600	343.1436	332.1755	314.1650	315.1486	377.1975	359.1870	360.1705	376.1897	180.5853	166.5878	189.0988	K	1434.6511	1416.6405	1417.6241	1408.6718	1390.6613	1391.6448	717.8256	704.8359	11	
5	67.0558	474.2135	456.2029	457.1865	446.2185	428.2079	429.1915	491.2405	473.2299	474.2135	490.2327	237.6067	223.6092	246.1202	N	1306.5562	1288.5455	1289.5292	1280.5742	1262.5663	1263.5498	653.7781	640.7884	10	
6	120.0812	621.2839	603.2713	604.2549	593.2869	575.2763	576.2599	638.3089	620.2983	621.2839	637.3010	311.1409	297.1434	319.6544	F	1192.5133	1174.5027	1175.4863	1166.5339	1148.5234	1149.5070	596.7567	583.7670	9	
7	120.0812	768.3477	750.3397	751.3233	740.3553	722.3447	723.3283	785.3773	767.3666	768.3477	784.3694	394.6751	370.6776	393.1887	F	1045.4448	1027.4343	1028.4178	1019.4680	1001.4550	1002.4385	523.2224	510.2328	8	
8	159.0921	954.4300	936.4190	937.4026	926.4346	908.4240	909.4076	971.4566	953.4460	954.4300	970.4487	477.7148	463.7173	486.2283	W	896.3765	880.3659	881.3495	872.3989	854.3865	855.3701	449.6882	436.6985	7	
9	101.1078	1082.5282	1064.5140	1065.4976	1054.5295	1036.5190	1037.5026	1099.5515	1081.5410	1082.5282	1098.5437	541.7623	527.7648	550.2758	K	712.2971	694.2866	695.2701	686.3187	668.3072	669.2908	356.6486	343.6589	6	
10	74.0605	1183.5723	1165.5618	1166.5453	1155.5773	1137.5668	1138.5503	1200.5992	1182.5887	1183.5723	1199.5914	592.2861	578.2886	600.7996	T	584.2022	566.1917	567.1752	558.2228	540.2123	541.1959	292.6011	279.6114	5	
11	120.0812	1330.6406	1312.6301	1313.6136	1302.6456	1284.6351	1285.6187	1347.6676	1329.6571	1330.6406	1346.6598	665.8203	651.8228	674.3338	F	483.1545	465.1440	466.1275	457.1751	439.1646	440.1482	242.0773	229.0876	4	
12	74.0605	1431.6884	1413.6779	1414.6614	1403.6934	1385.6829	1386.6664	1448.7153	1430.7048	1431.6884	1447.7075	716.3442	702.3467	724.8577	T	336.0861	318.0755	319.0591	310.1067	292.0962	293.0797	168.5430	155.5534	3	
13	60.0449	1518.7203	1500.7098	1501.6934	1490.7253	1472.7148	1473.6984	1535.7473	1517.7368	1518.7203	1534.7395	759.8602	745.8627	768.3737	S	235.0384	217.0279	218.0114	209.0591	191.0485	192.0321	118.0192	105.0295	2	
14	76.0220												745.8627	768.3737	C	148.0064	129.9958	130.9794	122.0270	104.0165	105.0000	74.5032	61.5135	1	

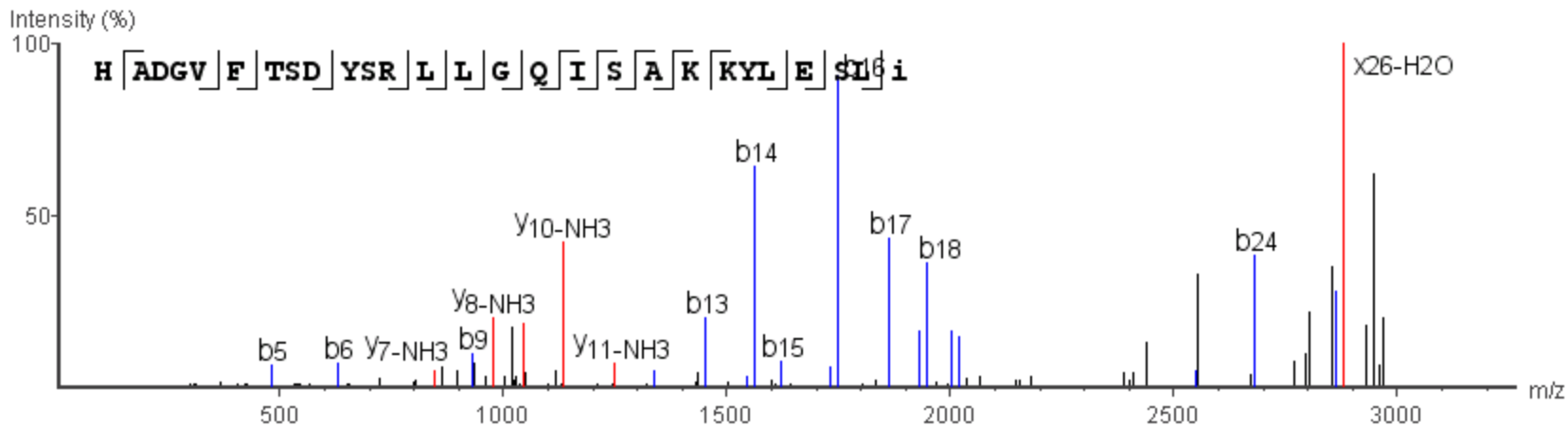


R.HADGVFTSDYSRLLGQISAKKYLESLI(-.98).G

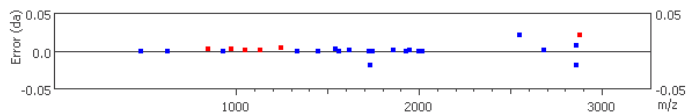
m/z=753.4044

Error=-1.2ppm

Z=4



#	Immonium	b	b-H2O	b-NH3	a	a-H2O	a-NH3	c	c-H2O	c-NH3	c-H	b (2+)	a (2+)	c (2+)	Seq	x	x-H2O	x-NH3	y	y-H2O	y-NH3	x (2+)	y (2+)	#
1	110.0717	138.0667	120.0562	121.0397	110.0717	92.0612	93.0447	155.0937	137.0832	138.0667	154.0859	69.5334	55.5359	78.0469	H									27
2	44.0499	209.1039	191.0933	192.0768	181.1089	163.0983	164.0818	226.1308	208.1203	209.1039	225.1230	105.0519	91.0544	113.5654	A	2899.5239	2881.4905	2882.4971	2873.5447	2855.5342	2856.5176	1450.2620	1437.2723	26
3	88.0398	324.1308	306.1202	307.1038	296.1358	278.1252	279.1088	341.1578	323.1472	324.1308	340.1500	162.5654	148.5679	171.0789	D	2828.4868	2810.4763	2811.4600	2802.5076	2784.4971	2785.4805	1414.7434	1401.7538	25
4	30.0343	381.1522	363.1417	364.1252	353.1572	335.1467	336.1302	398.1792	380.1687	381.1522	397.1714	191.0761	177.0786	199.5896	G	2713.4600	2695.4495	2696.4331	2687.4807	2669.4702	2670.4536	1357.2300	1344.2404	24
5	72.0812	480.2203	462.2101	463.1937	452.2256	434.2151	435.1987	497.2477	479.2371	480.2203	496.2398	240.6103	226.6128	249.1238	V	2656.4385	2638.4280	2639.4116	2630.4592	2612.4487	2613.4321	1328.7192	1315.7296	23
6	120.0812	627.2882	609.2785	610.2621	599.2941	581.2835	582.2671	644.3161	626.3055	627.2882	643.3082	314.1445	300.1470	322.6581	F	2557.3699	2539.3594	2540.3430	2531.3906	2513.3801	2514.3635	1279.1849	1266.1953	22
7	74.0605	728.3367	710.3262	711.3098	700.3417	682.3312	683.3148	745.3638	727.3532	728.3367	744.3559	364.6684	350.6709	373.1819	T	2410.3015	2392.2910	2393.2747	2384.3223	2366.3118	2367.2952	1205.6508	1192.6611	21
8	60.0449	815.3688	797.3582	798.3418	787.3738	769.3632	770.3468	832.3958	814.3853	815.3688	831.3879	408.1844	394.1869	416.6979	S	2309.2539	2291.2434	2292.2271	2283.2747	2265.2642	2266.2476	1155.1270	1142.1373	20
9	88.0398	930.3949	912.3851	913.3687	902.4007	884.3901	885.3737	947.4227	929.4122	930.3949	946.4149	465.6978	451.7003	474.2114	D	2222.2219	2204.2114	2205.1951	2196.2427	2178.2322	2179.2156	1111.6110	1098.6213	19
10	136.0761	1093.4590	1075.4485	1076.4320	1065.4640	1047.4535	1048.4370	1110.4860	1092.4755	1093.4590	1109.4781	547.2295	533.2320	555.7430	Y	2107.1948	2089.1843	2090.1680	2081.2156	2063.2051	2064.1885	1054.0974	1041.1078	18
11	60.0449	1180.4911	1162.4806	1163.4641	1152.4961	1134.4856	1135.4691	1197.5181	1179.5076	1180.4911	1196.5103	590.7455	576.7480	599.2590	S	1944.1317	1926.1211	1927.1047	1918.1523	1900.1418	1901.1254	972.5659	959.5762	17
12	129.1139	1336.5914	1318.5817	1319.5652	1308.5972	1290.5867	1291.5702	1353.6191	1335.6086	1336.5914	1352.6113	668.7961	654.7986	677.3096	R	1857.0997	1839.0891	1840.0728	1831.1204	1813.1099	1814.0934	929.0499	916.0602	16
13	86.0969	1449.6752	1431.6658	1432.6493	1421.6813	1403.6708	1404.6543	1466.7032	1448.6927	1449.6752	1465.6954	725.3381	711.3406	733.8516	L	1700.9985	1682.9879	1683.9716	1675.0192	1657.0087	1657.9922	850.9993	838.0096	15
14	86.0969	1562.7590	1544.7460	1545.7333	1534.7653	1516.7548	1517.7383	1579.7872	1561.7767	1562.7590	1578.7794	781.8801	767.8826	790.3936	L	1587.9146	1569.9039	1570.8876	1561.9352	1543.9247	1544.9082	794.4573	781.4676	14
15	30.0343	1619.7792	1601.7712	1602.7548	1591.7867	1573.7762	1574.7598	1636.8087	1618.7982	1619.7792	1635.8009	810.3909	796.3934	818.9044	G	1474.8304	1456.8198	1457.8035	1448.8511	1430.8406	1431.8241	737.9152	724.9255	13
16	101.0714	1747.8392	1729.8290	1730.8320	1719.8453	1701.8348	1702.8184	1764.8673	1746.8568	1747.8392	1763.8595	874.4202	860.4227	882.9337	Q	1417.8090	1399.7983	1400.7820	1391.8296	1373.8191	1374.8026	709.4045	696.4148	12
17	86.0969	1860.9224	1842.9139	1843.8975	1832.9294	1814.9189	1815.9025	1877.9514	1859.9409	1860.9224	1876.9436	930.9622	916.9647	939.4757	I	1289.7504	1271.7397	1272.7234	1263.7710	1245.7605	1246.7394	645.3752	632.3855	11
18	60.0449	1947.9548	1929.9454	1930.9294	1919.9614	1901.9509	1902.9344	1964.9834	1946.9729	1947.9548	1963.9756	974.4782	960.4807	982.9917	S	1176.6664	1158.6558	1159.6394	1150.6870	1132.6765	1133.6570	588.8332	575.8435	10
19	44.0499	2018.9923	2000.9821	2001.9666	1990.9985	1972.9880	1973.9716	2036.0205	2018.0100	2018.9923	2035.0127	1009.9968	995.9993	1018.5103	A	1089.6343	1071.6237	1072.6073	1063.6549	1045.6444	1046.6249	545.3171	532.3275	9
20	101.1078	2147.0884	2129.0779	2130.0613	2119.0935	2101.0828	2102.0664	2164.1155	2146.1047	2147.0884	2163.1077	1074.0442	1060.0468	1082.5577	K	1018.5972	1000.5867	1001.5702	992.6179	974.6073	975.5872	509.7986	496.8089	8
21	101.1078	2275.1833	2257.1729	2258.1562	2247.1885	2229.1777	2230.1614	2292.2104	2274.1997	2275.1833	2291.2026	1138.0917	1124.0942	1146.6052	K	890.5023	872.4917	873.4752	864.5229	846.5123	847.4921	445.7511	432.7614	7
22	136.0761	2438.2468	2420.2363	2421.2197	2410.2520	2392.2412	2393.2249	2455.2739	2437.2632	2438.2468	2454.2661	1219.6234	1205.6260	1228.1370	Y	762.4073	744.3967	745.3802	736.4279	718.4174	719.4009	381.7036	368.7140	6
23	86.0969	2551.3308	2533.3203	2534.3037	2523.3359	2505.3252	2506.3088	2568.3579	2550.3245	2551.3308	2567.3501	1276.1654	1262.1680	1284.6790	L	599.3440	581.3334	582.3170	573.3646	555.3541	556.3376	300.1720	287.1823	5
24	102.0554	2680.3706	2662.3628	2663.3462	2652.3784	2634.3677	2635.3513	2697.4004	2679.3896	2680.3706	2696.3926	1340.6866	1326.6892	1349.2002	E	486.2599	468.2494	469.2329	460.2805	442.2700	443.2536	243.6300	230.6403	4
25	60.0449	2767.4055	2749.3950	2750.3784	2739.4106	2721.3999	2722.3835	2784.4326	2766.4219	2767.4055	2783.4248	1384.2028	1370.2053	1392.7163	S	357.2173	339.2068	340.1903	331.2380	313.2274	314.2110	179.1087	166.1190	3
26	86.0969	2880.4895	2862.4707	2863.4814	2852.4946	2834.4839	2835.4675	2897.5166	2879.5059	2880.4895	2896.5088	1440.7448	1426.7473	1449.2583	L	270.1853	252.1747	253.1583	244.2059	226.1954	227.1789	135.5927	122.6030	2
27	85.1169														I(-.98)	157.1012	139.0907	140.0742	131.1219	113.1113	114.0949	79.0506	66.0609	1

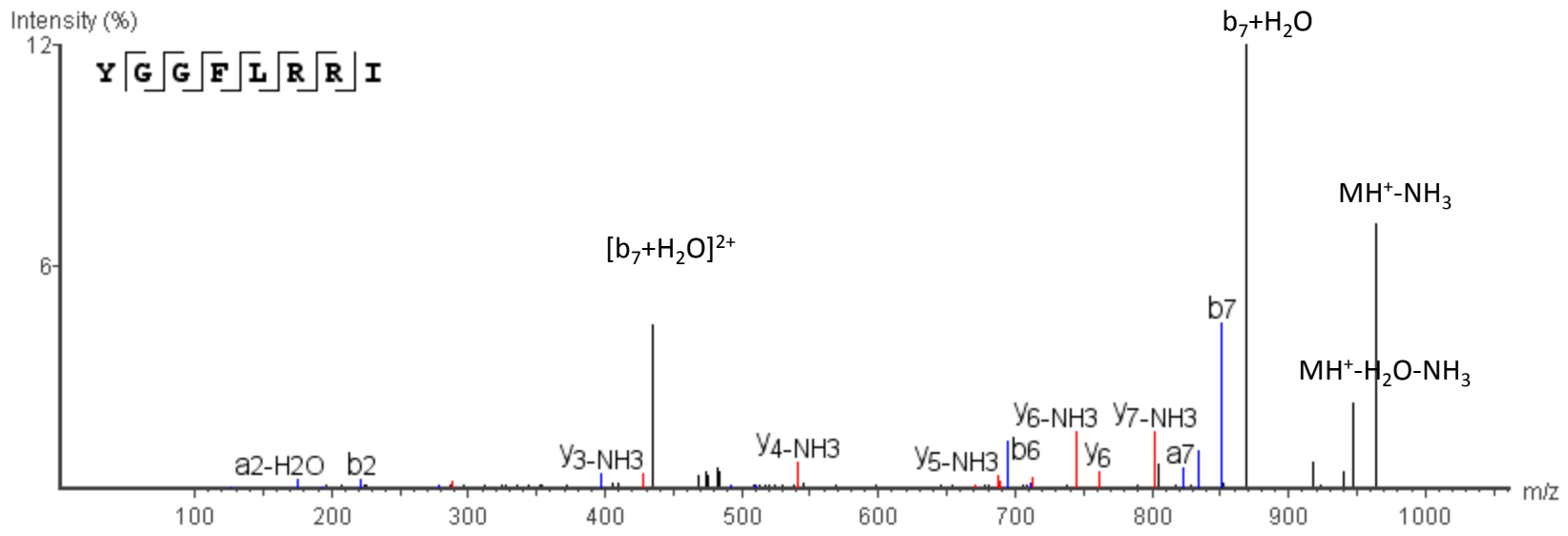


m/z=491.2852

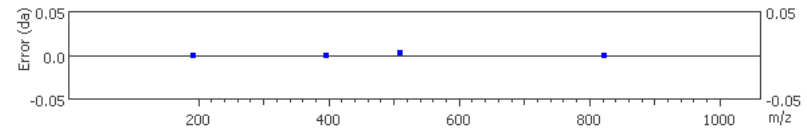
R.YGGFLRRI.R

Error=0.3ppm

Z=2



#	Immonium	b	b-H2O	b-NH3	a	a-H2O	a-NH3	c	c-H2O	c-NH3	b (2+)	a (2+)	c (2+)	Seq	x	x-H2O	x-NH3	y	y-H2O	y-NH3	x (2+)	y (2+)	#	
1	136.08	164.07	146.06	147.04	136.08	118.07	119.05	181.10	163.09	164.07	82.54	68.54	91.05	Y										8
2	30.03	221.09	203.08	204.07	193.10	175.12	176.07	238.12	220.11	221.09	111.05	97.05	119.56	G	844.48	826.47	827.45	818.50	800.49	801.47	422.74	409.75	7	
3	30.03	278.11	260.10	261.09	250.12	232.11	233.09	295.14	277.13	278.11	139.56	125.56	148.07	G	787.46	769.45	770.43	761.48	743.47	744.45	394.23	381.24	6	
4	120.08	425.18	407.17	408.16	397.19	379.18	380.16	442.21	424.20	425.18	213.09	199.09	221.60	F	730.44	712.38	713.41	704.46	686.45	687.43	365.72	352.73	5	
5	86.10	538.27	520.26	521.24	510.27	492.27	493.24	555.29	537.28	538.27	269.63	255.64	278.15	L	583.37	565.36	566.34	557.39	539.38	540.36	292.18	279.19	4	
6	129.11	694.37	676.36	677.34	666.37	648.36	649.35	711.39	693.38	694.37	347.68	333.69	356.20	R	470.28	452.27	453.26	444.30	426.29	427.28	235.64	222.65	3	
7	129.11	850.46	832.46	833.44	822.47	804.46	805.45	867.50	849.49	850.46	425.73	411.74	434.25	R	314.18	296.17	297.16	288.20	270.19	271.18	157.59	144.60	2	
8	86.10													I	158.08	140.07	141.05	132.10	114.09	115.07	79.54	66.55	1	

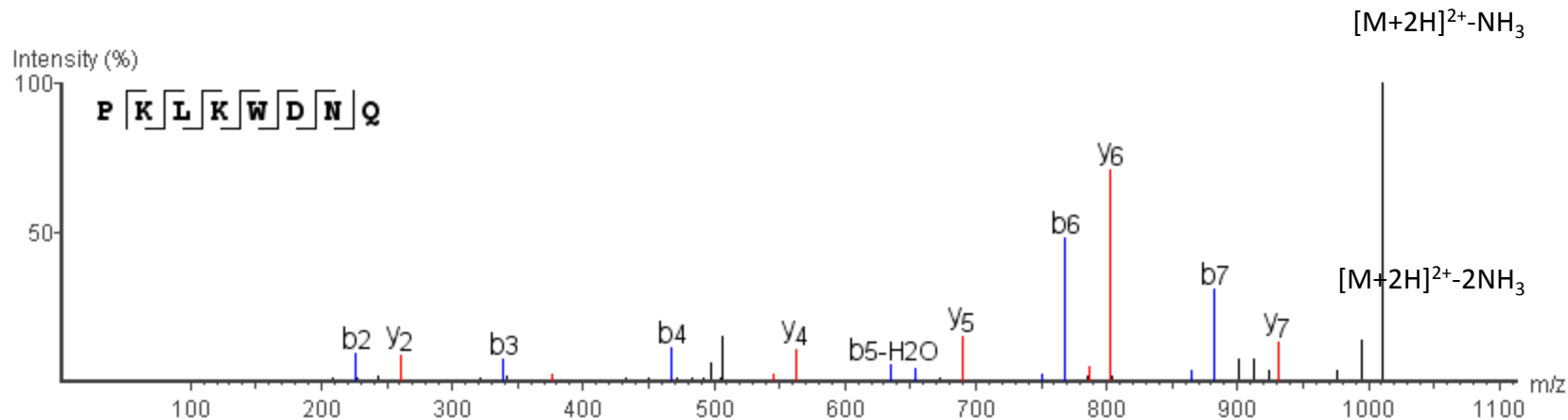


R.PKLKWDNQ.K

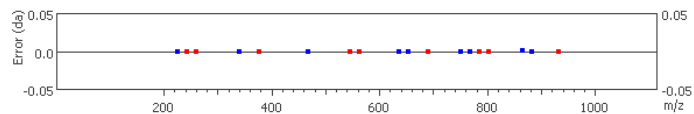
m/z=514.7795

Error=-0.5ppm

Z=2



#	Immonium	b	b-H2O	b-NH3	a	a-H2O	a-NH3	c	c-H2O	c-NH3	c-H	b (2+)	a (2+)	c (2+)	Seq	x	x-H2O	x-NH3	y	y-H2O	y-NH3	x (2+)	y (2+)	#	
1	70.0656	98.0606	80.0500	81.0336	70.0656	52.0550	53.0386	115.0876	97.0770	98.0606	114.0798	49.5303	35.5328	58.0438	P										8
2	101.1078	226.1554	208.1450	209.1285	198.1605	180.1500	181.1335	243.1825	225.1720	226.1554	242.1747	113.5778	99.5803	122.0913	K	957.4789	939.4684	940.4519	931.4993	913.4890	914.4726	479.2395	466.2498	7	
3	86.0969	339.2395	321.2290	322.2126	311.2446	293.2340	294.2176	356.2666	338.2560	339.2395	355.2588	170.1198	156.1223	178.6333	L	829.3840	811.3734	812.3569	803.4041	785.3940	786.3767	415.1920	402.2023	6	
4	101.1078	467.3339	449.3240	450.3076	439.3395	421.3290	422.3126	484.3615	466.3510	467.3339	483.3537	234.1673	220.1698	242.6808	K	716.2999	698.2894	699.2729	690.3203	672.3100	673.2936	358.6500	345.6603	5	
5	159.0921	653.4133	635.4037	636.3869	625.4189	607.4083	608.3919	670.4409	652.4304	653.4133	669.4330	327.2069	313.2094	335.7205	W	588.2050	570.1944	571.1780	562.2253	544.2150	545.1990	294.6025	281.6128	4	
6	88.0398	768.4399	750.4305	751.4138	740.4458	722.4352	723.4188	785.4678	767.4573	768.4399	784.4600	384.7204	370.7229	393.2339	D	402.1256	384.1151	385.0966	376.1469	358.1357	359.1193	201.5628	188.5731	3	
7	87.0558	882.4835	864.4731	865.4551	854.4887	836.4781	837.4617	899.5107	881.5002	882.4835	898.5029	441.7419	427.7444	450.2554	N	287.0987	269.0881	270.0717	261.1198	243.1088	244.0933	144.0493	131.0597	2	
8	101.0714														Q	173.0558	155.0452	156.0288	147.0764	129.0659	130.0494	87.0279	74.0382	1	

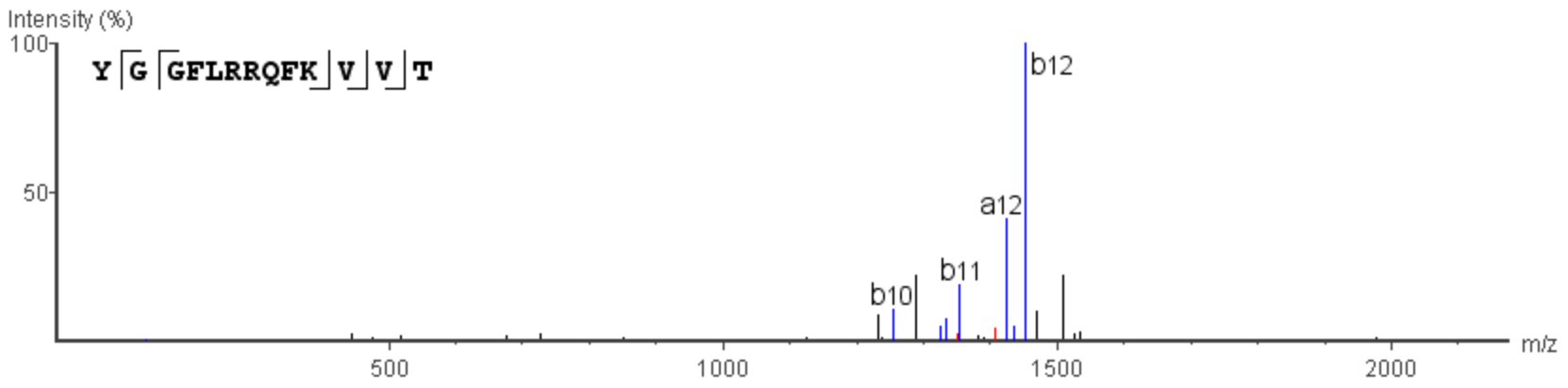


R.YGGFLRRQFKVVT.R

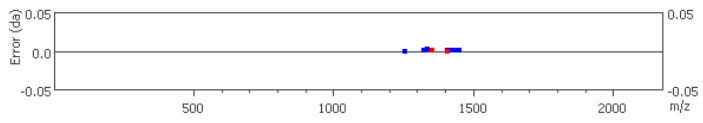
m/z=524.3

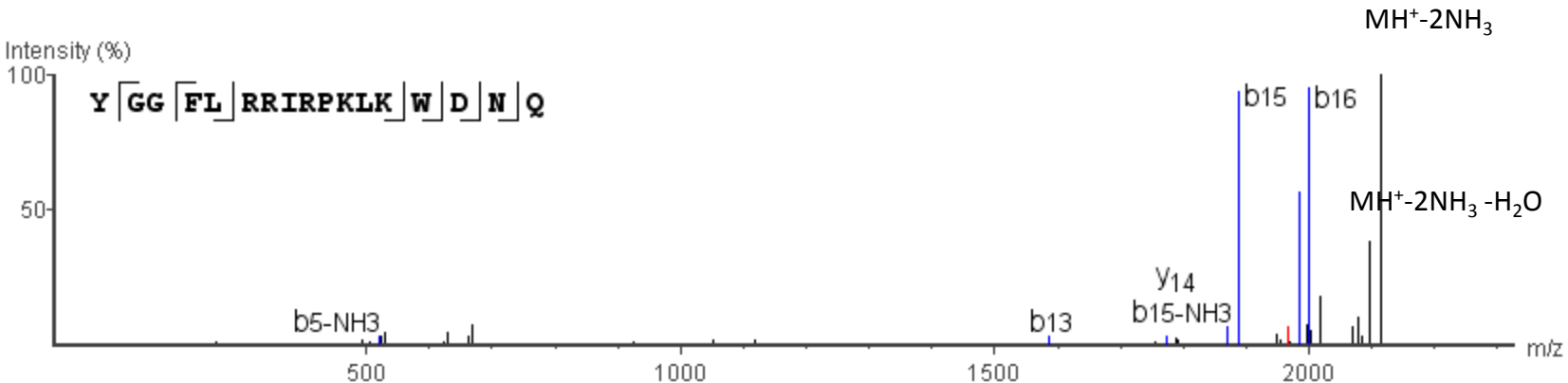
Error=0.1ppm

Z=3



#	Immonium	b	b-H2O	b-NH3	a	a-H2O	a-NH3	c	c-H2O	c-NH3	c-H	b(2+)	a(2+)	c(2+)	Seq	x	x-H2O	x-NH3	y	y-H2O	y-NH3	x(2+)	y(2+)	#	
1	136.0761	164.0712	146.0606	147.0441	136.0761	118.0656	119.0491	181.0981	163.0876	164.0712	180.0903	82.5356	68.5381	91.0491	Y										13
2	30.0343	221.0926	203.0820	204.0656	193.0976	175.0870	176.0706	238.1196	220.1090	221.0926	237.1118	111.0463	97.0488	119.5598	G	1433.8013	1415.7906	1416.7743	1407.8204	1389.8114	1390.7949	717.4006	704.4109	12	
3	30.0343	278.1141	260.1035	261.0871	250.1191	232.1085	233.0921	295.1411	277.1305	278.1141	294.1333	139.5570	125.5595	148.0705	G	1376.7798	1358.7692	1359.7528	1350.7976	1332.7899	1333.7734	688.8899	675.9002	11	
4	120.0812	425.1825	407.1719	408.1555	397.1875	379.1769	380.1605	442.2095	424.1989	425.1825	441.2017	213.0912	199.0937	221.6047	F	1319.7583	1301.7477	1302.7313	1293.7789	1275.7684	1276.7520	660.3792	647.3895	10	
5	86.0969	538.2665	520.2560	521.2396	510.2715	492.2610	493.2446	555.2936	537.2830	538.2665	554.2857	269.6333	255.6358	278.1468	L	1172.6899	1154.6793	1155.6630	1146.7106	1128.7001	1129.6836	586.8450	573.8553	9	
6	129.1139	694.3676	676.3571	677.3406	666.3726	648.3621	649.3456	711.3947	693.3841	694.3676	710.3868	347.6838	333.6863	356.1973	R	1059.6058	1041.5952	1042.5789	1033.6265	1015.6159	1016.5995	530.3029	517.3132	8	
7	129.1139	850.4688	832.4582	833.4418	822.4738	804.4632	805.4468	867.4958	849.4852	850.4688	866.4679	425.7344	411.7369	434.2479	R	903.5048	885.4942	886.4778	877.5254	859.5148	860.4984	452.2524	439.2627	7	
8	101.0714	978.5273	960.5168	961.5004	950.5323	932.5218	933.5054	995.5544	977.5438	978.5273	994.5465	489.7637	475.7662	498.2772	Q	747.4036	729.3931	730.3766	721.4243	703.4137	704.3973	374.2018	361.2121	6	
9	120.0812	1125.5957	1107.5852	1108.5687	1097.6007	1079.5902	1080.5737	1142.6227	1124.6122	1125.5957	1141.6149	563.2979	549.3004	571.8113	F	619.3451	601.3345	602.3181	593.3657	575.3552	576.3387	310.1725	297.1829	5	
10	101.1078	1253.6901	1235.6802	1236.6637	1225.6957	1207.6852	1208.6687	1270.7177	1252.7072	1253.6901	1269.7098	627.3453	613.3478	635.8588	K	472.2767	454.2661	455.2497	446.2973	428.2867	429.2703	236.6383	223.6487	4	
11	72.0812	1352.7574	1334.7451	1335.7321	1324.7620	1306.7535	1307.7371	1369.7860	1351.7755	1352.7574	1368.7782	676.8795	662.8820	685.3930	V	344.1817	326.1711	327.1547	318.2023	300.1918	301.1754	172.5909	159.6012	3	
12	72.0812	1451.8246	1433.8170	1434.7975	1423.8298	1405.8220	1406.8031	1468.8545	1450.8440	1451.8246	1467.8467	726.4138	712.4163	734.9272	V	245.1133	227.1027	228.0863	219.1339	201.1234	202.1069	123.0566	110.0670	2	
13	74.0605														T	146.0449	128.0343	129.0179	120.0655	102.0550	103.0385	73.5224	60.5328	1	





#	Immonium	b	b-H2O	b-NH3	a	a-H2O	a-NH3	c	c-H2O	c-NH3	b (2+)	a (2+)	c (2+)	Seq	x	x-H2O	x-NH3	y	y-H2O	y-NH3	x (2+)	y (2+)	#
1	136.08	164.07	146.06	147.04	136.08	118.07	119.05	181.10	163.09	164.07	82.54	68.54	91.05	Y									17
2	30.03	221.09	203.08	204.07	193.10	175.09	176.07	238.12	220.11	221.09	111.05	97.05	119.56	G	2010.11	1992.10	1993.09	1984.10	1966.12	1967.10	1005.56	992.57	16
3	30.03	278.11	260.10	261.09	250.12	232.11	233.09	295.14	277.13	278.11	139.56	125.56	148.07	G	1953.09	1935.08	1936.07	1927.11	1909.10	1910.09	977.05	964.06	15
4	120.08	425.18	407.17	408.16	397.19	379.18	380.16	442.21	424.20	425.18	213.09	199.09	221.60	F	1896.07	1878.06	1879.04	1870.07	1852.08	1853.07	948.54	935.55	14
5	86.10	538.27	520.26	521.20	510.27	492.26	493.24	555.29	537.28	538.27	269.63	255.64	278.15	L	1749.00	1730.99	1731.98	1723.02	1705.01	1706.00	875.00	862.01	13
6	129.11	694.37	676.36	677.34	666.37	648.36	649.35	711.39	693.38	694.37	347.68	333.69	356.20	R	1635.92	1617.91	1618.89	1609.94	1591.93	1592.91	818.46	805.47	12
7	129.11	850.47	832.46	833.44	822.47	804.46	805.45	867.50	849.49	850.47	425.73	411.74	434.25	R	1479.82	1461.81	1462.79	1453.84	1435.83	1436.81	740.41	727.42	11
8	86.10	963.55	945.54	946.53	935.56	917.55	918.53	980.58	962.57	963.55	482.28	468.28	490.79	I	1323.72	1305.71	1306.69	1297.74	1279.73	1280.71	662.36	649.37	10
9	129.11	1119.65	1101.64	1102.63	1091.66	1073.65	1074.63	1136.68	1118.67	1119.65	560.33	546.33	568.84	R	1210.63	1192.62	1193.61	1184.65	1166.64	1167.63	605.82	592.83	9
10	70.07	1216.71	1198.70	1199.68	1188.71	1170.70	1171.68	1233.73	1215.72	1216.71	608.85	594.86	617.37	P	1054.53	1036.52	1037.50	1028.55	1010.54	1011.53	527.77	514.78	8
11	101.11	1344.80	1326.79	1327.77	1316.81	1298.80	1299.78	1361.83	1343.82	1344.80	672.90	658.90	681.41	K	957.48	939.47	940.45	931.50	913.49	914.47	479.24	466.25	7
12	86.10	1457.89	1439.88	1440.86	1429.89	1411.88	1412.86	1474.91	1456.90	1457.89	729.44	715.45	737.96	L	829.38	811.37	812.36	803.40	785.39	786.38	415.19	402.20	6
13	101.11	1585.98	1567.97	1568.95	1557.99	1539.98	1540.96	1603.01	1585.00	1585.98	793.49	779.49	802.00	K	716.30	698.29	699.27	690.32	672.31	673.29	358.65	345.66	5
14	159.09	1772.06	1754.05	1755.03	1744.06	1726.05	1727.04	1789.09	1771.08	1772.06	886.53	872.53	895.04	W	588.20	570.19	571.18	562.23	544.22	545.20	294.60	281.61	4
15	88.04	1887.09	1869.08	1870.07	1859.09	1841.08	1842.06	1904.11	1886.10	1887.09	944.04	930.05	952.56	D	402.13	384.12	385.10	376.15	358.14	359.12	201.56	188.57	3
16	87.06	2001.13	1983.12	1984.10	1973.13	1955.12	1956.11	2018.16	2000.15	2001.13	1001.06	987.07	1009.58	N	287.10	269.09	270.07	261.12	243.11	244.09	144.05	131.06	2
17	101.07													Q	173.06	155.05	156.03	147.08	129.07	130.05	87.03	74.04	1

