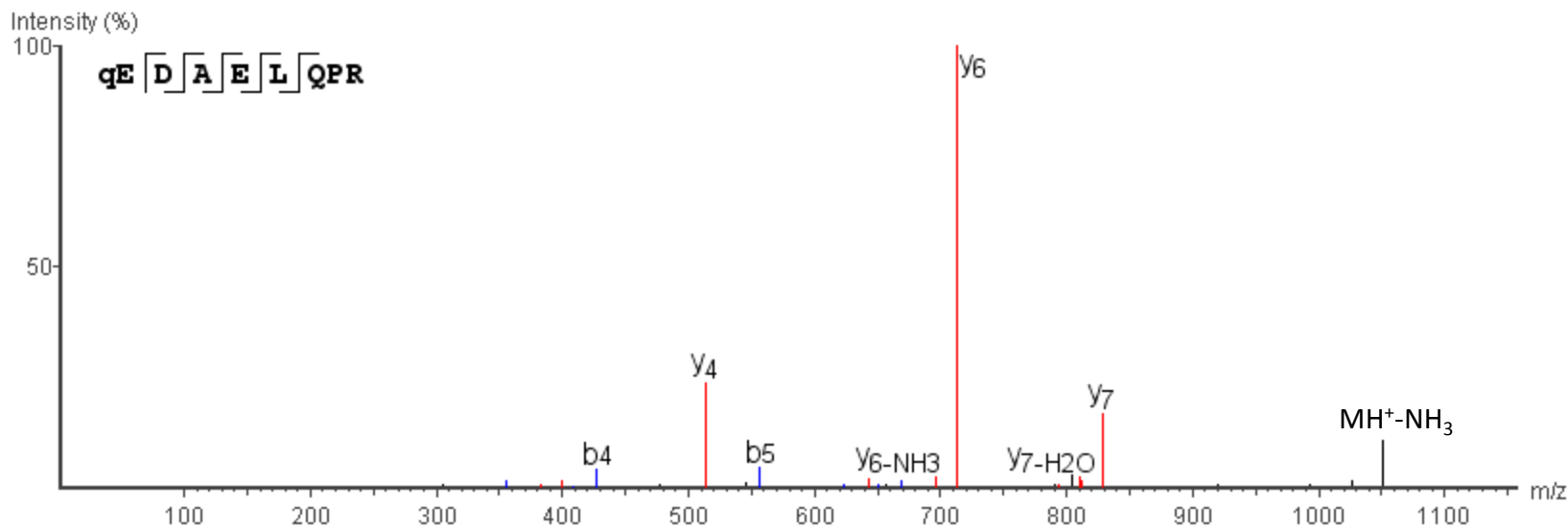
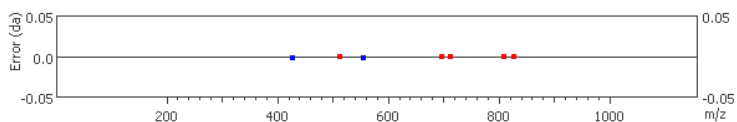


(2) Sequence assignments of peptides with PTMs



#	Immonium	b	b-H2O	b-NH3	a	a-H2O	a-NH3	c	c-H2O	c-NH3	c-H	b(2+)	a(2+)	c(2+)	Seq	x	x-H2O	x-NH3	y	y-H2O	y-NH3	x(2+)	y(2+)	#	
1	84.0414	112.0364	94.0258	95.0094	84.0414	66.0308	67.0144	129.0634	111.0528	112.0364	128.0556	56.5182	42.5207	65.0317	Q(-17.03)										9
2	102.0554	241.0790	223.0684	224.0520	213.0840	195.0734	196.0570	258.1060	240.0954	241.0790	257.0982	121.0395	107.0420	129.5530	E	983.4429	965.4324	966.4159	957.4636	939.4530	940.4366	492.2215	479.2318	8	
3	88.0398	356.1059	338.0954	339.0789	328.1109	310.1004	311.0839	373.1329	355.1224	356.1059	372.1251	178.5530	164.5555	187.0665	D	854.4003	836.3898	837.3733	828.4207	810.4098	811.3940	427.7002	414.7105	7	
4	44.0499	427.1459	409.1325	410.1161	399.1480	381.1375	382.1210	444.1700	426.1595	427.1459	443.1622	214.0715	200.0740	222.5850	A	739.3734	721.3629	722.3464	713.3937	695.3835	696.3671	370.1867	357.1970	6	
5	102.0554	556.1884	538.1750	539.1586	528.1906	510.1801	511.1636	573.2126	555.2021	556.1884	572.2048	278.5928	264.5953	287.1063	E	668.3363	650.3257	651.3093	642.3569	624.3464	625.3300	334.6682	321.6785	5	
6	86.0969	669.2697	651.2591	652.2427	641.2747	623.2641	624.2477	686.2967	668.2861	669.2697	685.2888	335.1348	321.1373	343.6483	L	539.2937	521.2831	522.2667	513.3142	495.3038	496.2874	270.1469	257.1572	4	
7	101.0714	797.3282	779.3177	780.3013	769.3333	751.3227	752.3063	814.3553	796.3447	797.3282	813.3474	399.1641	385.1666	407.6776	Q	426.2096	408.1991	409.1826	400.2303	382.2197	383.2033	213.6048	200.6151	3	
8	70.0656	894.3810	876.3704	877.3540	866.3860	848.3754	849.3590	911.4080	893.3975	894.3810	910.4001	447.6905	433.6930	456.2040	P	298.1511	280.1405	281.1241	272.1717	254.1611	255.1447	149.5755	136.5858	2	
9	129.1139														R	201.0983	183.0877	184.0713	175.1189	157.1084	158.0919	101.0491	88.0595	1	

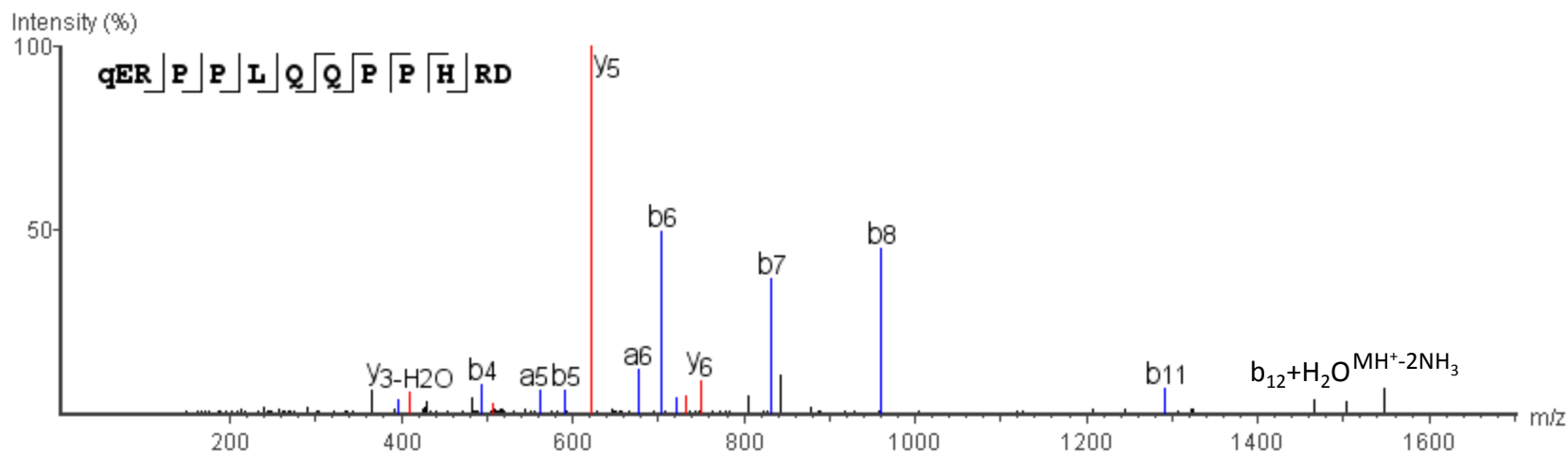


R.Q(-17.03)ERPPLQQPPHRD.K

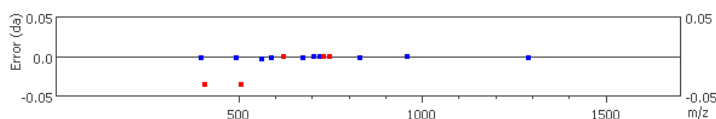
m/z=527.6022

Error=-0.3ppm

Z=3



#	Immonium	b	b-H2O	b-NH3	a	a-H2O	a-NH3	c	c-H2O	c-NH3	c-H	b (2+)	a (2+)	c (2+)	Seq	x	x-H2O	x-NH3	y	y-H2O	y-NH3	x (2+)	y (2+)	#	
1	84.0414	112.0364	94.0258	95.0094	84.0414	66.0308	67.0144	129.0634	111.0528	112.0364	128.0556	56.5182	42.5207	65.0317	Q(-17.03)										13
2	102.0554	241.0790	223.0684	224.0520	213.0840	195.0734	196.0570	258.1060	240.0954	241.0790	257.0982	121.0395	107.0420	129.5530	E	1495.7401	1477.7295	1478.7131	1469.7607	1451.7502	1452.7338	748.3701	735.3804	12	
3	129.1139	397.1828	379.1695	380.1531	369.1851	351.1745	352.1581	414.2071	396.1965	397.1828	413.1993	199.0900	185.0925	207.6035	R	1366.6975	1348.6869	1349.6705	1340.7181	1322.7076	1323.6912	683.8488	670.8591	11	
4	70.0656	494.2347	476.2223	477.2059	466.2379	448.2273	449.2109	511.2599	493.2493	494.2347	510.2520	247.6164	233.6189	256.1299	P	1210.5964	1192.5858	1193.5695	1184.6171	1166.6066	1167.5901	605.7982	592.8085	10	
5	70.0656	591.2878	573.2750	574.2586	563.2946	545.2800	546.2636	608.3126	590.3021	591.2878	607.3047	296.1428	282.1453	304.6563	P	1113.5436	1095.5330	1096.5166	1087.5642	1069.5537	1070.5372	557.2718	544.2821	9	
6	86.0969	704.3711	686.3591	687.3427	676.3767	658.3641	659.3477	721.3976	703.3861	704.3711	720.3888	352.6848	338.6873	361.1983	L	1016.4909	998.4803	999.4639	990.5115	972.5010	973.4846	508.7455	495.7558	8	
7	101.0714	832.4302	814.4177	815.4012	804.4332	786.4227	787.4062	849.4553	831.4447	832.4302	848.4474	416.7141	402.7166	425.2276	Q	903.4068	885.3962	886.3798	877.4274	859.4169	860.4005	452.2034	439.2137	7	
8	101.0714	960.4878	942.4763	943.4598	932.4918	914.4813	915.4648	977.5139	959.5033	960.4878	976.5060	480.7434	466.7459	489.2569	Q	775.3483	757.3377	758.3213	749.3682	731.3583	732.3407	388.1741	375.1844	6	
9	70.0656	1057.5396	1039.5291	1040.5126	1029.5446	1011.5340	1012.5176	1074.5665	1056.5560	1057.5396	1073.5587	529.2698	515.2723	537.7833	P	647.2897	629.2791	630.2627	621.3092	603.2997	604.2833	324.1448	311.1552	5	
10	70.0656	1154.5923	1136.5818	1137.5653	1126.5973	1108.5868	1109.5703	1171.6193	1153.6088	1154.5923	1170.6115	577.7961	563.7986	586.3096	P	550.2369	532.2263	533.2099	524.2576	506.2825	507.2306	275.6184	262.6288	4	
11	110.0717	1291.6530	1273.6407	1274.6243	1263.6562	1245.6458	1246.6293	1308.6782	1290.6677	1291.6530	1307.6704	646.3256	632.3281	654.8391	H	453.1841	435.1736	436.1571	427.2048	409.2301	410.1778	227.0921	214.1024	3	
12	129.1139	1447.7523	1429.7418	1430.7253	1419.7573	1401.7468	1402.7303	1464.7793	1446.7688	1447.7523	1463.7715	724.3762	710.3787	732.8896	R	316.1252	298.1147	299.0982	290.1459	272.1353	273.1189	158.5626	145.5729	2	
13	88.0398														D	160.0241	142.0136	142.9971	134.0448	116.0342	117.0178	80.5121	67.5224	1	

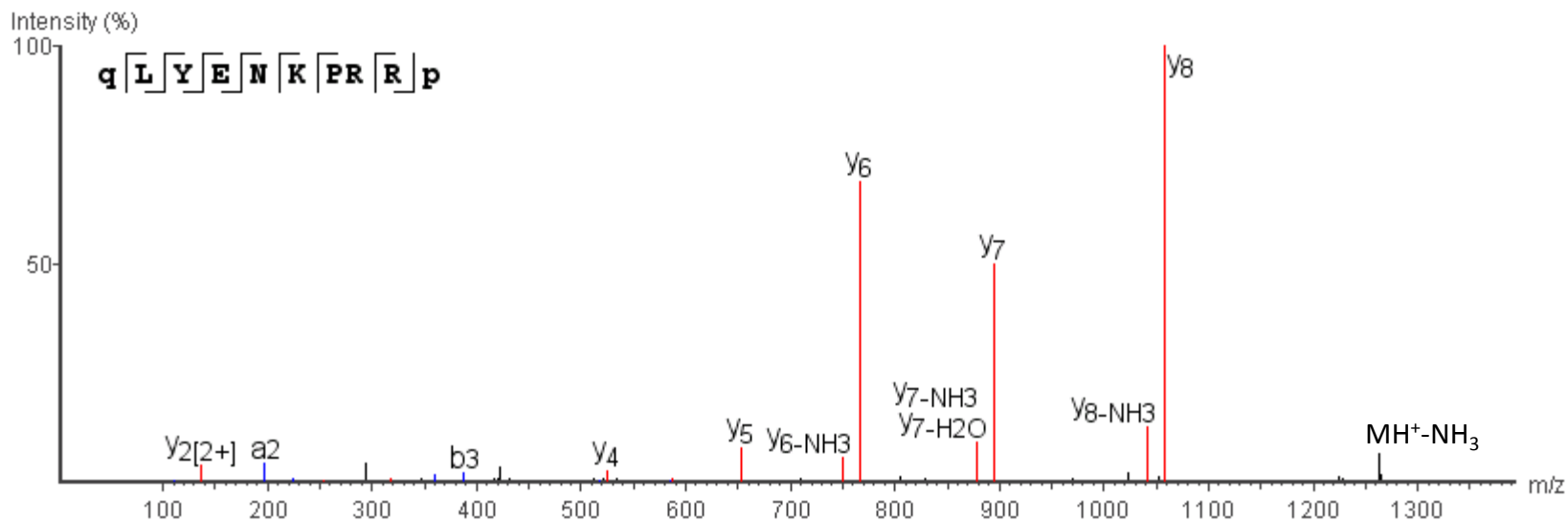


R.Q(-17.03)LYENKPRRP(-.98).Y

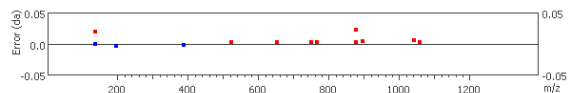
m/z=428.2388

Z=3

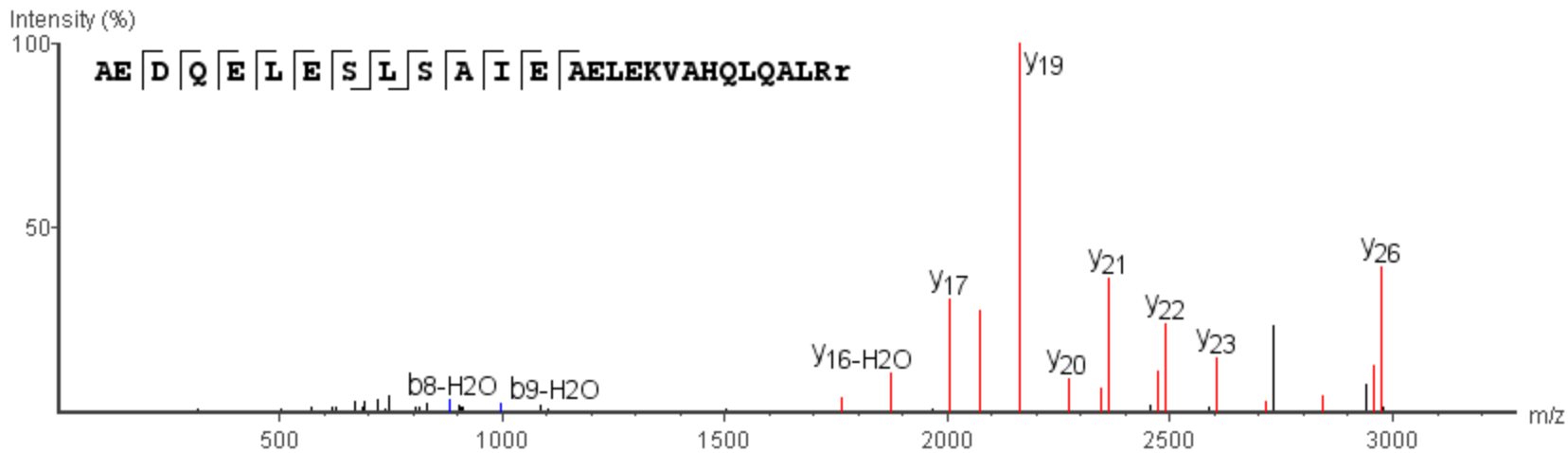
Error=0.3ppm



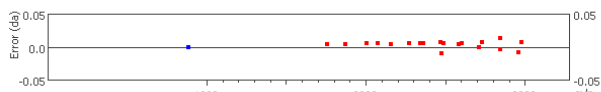
#	Immonium	b	b-H2O	b-NH3	a	a-H2O	a-NH3	c	c-H2O	c-NH3	c-H	b (2+)	a (2+)	c (2+)	Seq	x	x-H2O	x-NH3	y	y-H2O	y-NH3	x (2+)	y (2+)	#	
1	84.0414	112.0364	94.0258	95.0094	84.0414	66.0308	67.0144	129.0634	111.0528	112.0364	128.0556	56.5182	42.5207	65.0317	Q(-17.03)										10
2	86.0969	225.1205	207.1099	208.0935	197.1287	179.1149	180.0985	242.1475	224.1369	225.1205	241.1396	113.0602	99.0627	121.5737	L	1197.6527	1179.6421	1180.6257	1171.6733	1153.6628	1154.6464	599.3264	586.3367	9	
3	136.0754	388.1866	370.1732	371.1568	360.1888	342.1782	343.1618	405.2108	387.2002	388.1866	404.2030	194.5919	180.5944	203.1054	Y	1084.5687	1066.5581	1067.5417	1058.5848	1040.5789	1041.5560	542.7844	529.7947	8	
4	102.0554	517.2264	499.2158	500.1994	489.2314	471.2208	472.2044	534.2534	516.2429	517.2264	533.2455	259.1132	245.1157	267.6267	E	921.5054	903.4948	904.4784	895.5208	877.4922	878.4952	461.2527	448.2630	7	
5	87.0558	631.2693	613.2587	614.2423	603.2743	585.2637	586.2473	648.2963	630.2858	631.2693	647.2885	316.1346	302.1371	324.6482	N	792.4628	774.4522	775.4358	766.4797	748.4728	749.4532	396.7314	383.7417	6	
6	101.1078	759.3643	741.3537	742.3373	731.3693	713.3587	714.3423	776.3913	758.3807	759.3643	775.3834	380.1821	366.1846	388.6956	K	678.4199	660.4093	661.3928	652.4369	634.4299	635.4135	339.7099	326.7202	5	
7	70.0656	856.4170	838.4064	839.3900	828.4220	810.4114	811.3950	873.4440	855.4335	856.4170	872.4362	428.7085	414.7110	437.2220	P	550.3249	532.3143	533.2979	524.3419	506.3350	507.3186	275.6624	262.6728	4	
8	129.1139	1012.5181	994.5076	995.4911	984.5231	966.5126	967.4962	1029.5452	1011.5346	1012.5181	1028.5374	506.7591	492.7616	515.2726	R	453.2722	435.2616	436.2451	427.2928	409.2822	410.2658	227.1361	214.1464	3	
9	129.1139	1168.6193	1150.6088	1151.5923	1140.6243	1122.6138	1123.5973	1185.6462	1167.6357	1168.6193	1184.6384	584.8096	570.8121	593.3231	R	297.1711	279.1605	280.1440	271.1917	253.1811	254.1647	149.0855	136.0754	2	
10	69.0856														P(-.98)	141.0699	123.0594	124.0429	115.0906	97.0800	98.0636	71.0350	58.0453	1	



R.AEDQELESLSAIEAELEKVAHQQLALRR(-.98).G



#	Inmonium	b	b-H2O	b-NH3	a	a-H2O	a-NH3	c	c-H2O	c-NH3	c-H	b(2+)	a(2+)	c(2+)	Seq	x	x-H2O	x-NH3	y	y-H2O	y-NH3	x(2+)	y(2+)	#
1	44.0499	72.0449	54.0344	55.0179	44.0499	26.0394	27.0229	89.0719	71.0614	72.0449	88.0641	36.5225	22.5250	45.0360	A									28
2	102.0554	201.0875	183.0770	184.0605	173.0925	155.0820	156.0655	218.1145	200.1040	201.0875	217.1067	101.0438	87.0463	109.5573	E	3130.6167	3112.6062	3113.5898	3104.6375	3086.6270	3087.6104	1565.8083	1552.8187	27
3	88.0398	316.1144	298.1039	299.0875	288.1194	270.1089	271.0925	333.1414	315.1309	316.1144	332.1336	158.5572	144.5597	167.0707	D	3001.5740	2983.5635	2984.5471	2975.5864	2957.5842	2958.5762	1501.2870	1488.2974	26
4	101.0714	444.1730	426.1625	427.1461	416.1780	398.1675	399.1511	461.2000	443.1895	444.1730	460.1922	222.5865	208.5890	231.1000	Q	2886.5471	2868.5366	2869.5203	2860.5679	2842.5420	2843.5452	1443.7736	1430.7839	25
5	102.0554	573.2156	555.2051	556.1887	545.2206	527.2101	528.1937	590.2427	572.2321	573.2156	589.2348	287.1078	273.1103	295.6213	E	2758.4885	2740.4780	2741.4617	2732.5010	2714.4980	2715.4822	1379.7443	1366.7546	24
6	86.0969	686.2997	668.2891	669.2727	658.3047	640.2941	641.2777	703.3267	685.3162	686.2997	702.3188	343.6498	329.6523	352.1634	L	2629.4460	2611.4355	2612.4192	2603.4600	2585.4507	2586.4397	1315.2230	1302.2334	23
7	102.0554	815.3423	797.3317	798.3153	787.3473	769.3367	770.3203	832.3693	814.3588	815.3423	831.3615	408.1711	394.1736	416.6847	E	2516.3618	2498.3513	2499.3350	2490.3757	2472.3638	2473.3657	1258.6809	1245.6913	22
8	60.0449	902.3743	884.3643	885.3473	874.3793	856.3687	857.3523	919.4013	901.3907	902.3743	918.3934	451.6871	437.6896	460.2007	S	2387.3193	2369.3088	2370.2925	2361.3325	2343.3230	2344.3100	1194.1597	1181.1700	21
9	86.0969	1015.4584	997.4478	998.4314	987.4634	969.4528	970.4364	1032.4854	1014.4749	1015.4584	1031.4775	508.2292	494.2317	516.7427	L	2300.2874	2282.2769	2283.2605	2274.3008	2256.2976	2257.2810	1150.6437	1137.6541	20
10	60.0449	1102.4904	1084.4799	1085.4634	1074.4954	1056.4849	1057.4684	1119.5173	1101.5068	1102.4904	1118.5095	551.7452	537.7477	560.2587	S	2187.2031	2169.1926	2170.1763	2161.2178	2143.2134	2144.1968	1094.1016	1081.1119	19
11	44.0499	1173.5275	1155.5170	1156.5005	1145.5325	1127.5220	1128.5055	1190.5544	1172.5439	1173.5275	1189.5466	587.2637	573.2662	595.7772	A	2100.1711	2082.1606	2083.1443	2074.1855	2056.1814	2057.1648	1050.5856	1037.5959	18
12	86.0969	1286.6116	1268.6011	1269.5846	1258.6166	1240.6061	1241.5896	1303.6385	1285.6281	1286.6116	1302.6307	643.8058	629.8083	652.3193	I	2029.1342	2011.1235	2012.1072	2003.1486	1985.1443	1986.1278	1015.0671	1002.0774	17
13	102.0554	1415.6542	1397.6437	1398.6272	1387.6592	1369.6487	1370.6322	1432.6812	1414.6707	1415.6542	1431.6733	708.3271	694.3296	716.8406	E	1916.0502	1898.0396	1899.0232	1890.0708	1872.0542	1873.0438	958.5251	945.5354	16
14	44.0499	1486.6913	1468.6808	1469.6643	1458.6963	1440.6858	1441.6693	1503.7183	1485.7078	1486.6913	1502.7104	743.8456	729.8481	752.3591	A	1787.0076	1769.9969	1769.9806	1761.0234	1743.0177	1744.0012	894.0038	881.0141	15
15	102.0554	1615.7339	1597.7234	1598.7069	1587.7389	1569.7284	1570.7119	1632.7609	1614.7504	1615.7339	1631.7531	808.3669	794.3694	816.8804	E	1715.9705	1697.9598	1698.9435	1689.9911	1671.9806	1672.9641	858.4852	845.4955	14
16	86.0969	1728.8179	1710.8074	1711.7909	1700.8229	1682.8124	1683.7959	1745.8448	1727.8344	1728.8179	1744.8370	864.9089	850.9114	873.4224	L	1586.9279	1568.9172	1569.9009	1560.9485	1542.9380	1543.9215	793.9639	780.9742	13
17	102.0554	1857.8605	1839.8500	1840.8335	1829.8655	1811.8550	1812.8385	1874.8875	1856.8770	1857.8605	1873.8796	929.4302	915.4327	937.9437	E	1473.8438	1455.8331	1456.8168	1447.8644	1429.8539	1430.8374	737.4219	724.4322	12
18	101.1078	1985.9554	1967.9449	1968.9285	1957.9604	1939.9500	1940.9335	2002.9824	1984.9719	1985.9554	2001.9746	993.4777	979.4802	1001.9912	K	1344.8011	1326.7905	1327.7742	1318.8218	1300.8113	1301.7948	672.9006	659.9109	11
19	72.0812	2085.0239	2067.0134	2067.9968	2057.0291	2039.0184	2040.0020	2102.0510	2084.0403	2085.0239	2101.0432	1043.0120	1029.0145	1051.5255	V	1216.7062	1198.6956	1199.6792	1190.7268	1172.7176	1173.6998	608.8531	595.8634	10
20	44.0499	2156.0610	2138.0505	2139.0339	2128.0662	2110.0554	2111.0391	2173.0881	2155.0774	2156.0610	2172.0803	1078.5305	1064.5331	1087.0441	A	1117.6378	1099.6272	1100.6108	1091.6584	1073.6479	1074.6315	559.3189	546.3292	9
21	110.0717	2293.1199	2275.1094	2276.0928	2265.1250	2247.1143	2248.0979	2310.1470	2292.1362	2293.1199	2309.1392	1147.0599	1133.0625	1155.5735	H	1046.6007	1028.5901	1029.5737	1020.6213	1002.6108	1003.5944	523.8004	510.8107	8
22	101.0714	2421.1785	2403.1680	2404.1514	2393.1836	2375.1729	2376.1565	2438.2056	2420.1948	2421.1785	2437.1978	1211.0892	1197.0918	1219.6028	Q	909.5418	891.5312	892.5148	883.5624	865.5519	866.5355	445.2709	442.2812	7
23	86.0969	2534.2625	2516.2520	2517.2354	2506.2676	2488.2568	2489.2405	2551.2896	2533.2788	2534.2625	2550.2817	1267.6312	1253.6338	1276.1448	L	781.4832	763.4727	764.4562	755.5038	737.4933	738.4769	391.2416	378.2519	6
24	101.0714	2662.3210	2644.3105	2645.2939	2634.3262	2616.3154	2617.2991	2679.3481	2661.3374	2662.3210	2678.3403	1361.6605	1347.6631	1370.1741	Q	668.3992	650.3886	651.3722	642.4198	624.4092	625.3928	334.6996	321.7099	5
25	44.0499	2763.3582	2745.3477	2746.3311	2735.3633	2687.3525	2688.3362	2750.3853	2732.3745	2733.3582	2749.3774	1367.1791	1353.1816	1375.6926	A	540.3406	522.3300	523.3136	514.3612	496.3506	497.3342	270.6703	257.6806	4
26	86.0969	2846.4424	2828.4319	2829.4153	2818.4475	2800.4368	2801.4204	2863.4695	2845.4587	2846.4424	2862.4617	1423.7212	1409.7238	1432.2347	L	469.3035	451.2929	452.2765	443.3241	425.3135	426.2971	235.1517	222.1620	3
27	129.1139	3002.5435	2984.5330	2985.5164	2974.5486	2956.5378	2957.5215	3019.5706	3001.5598	3002.5435	3018.5627	1501.7717	1487.7743	1510.2853	R	356.2194	338.2089	339.1924	330.2401	312.2295	313.2131	178.6097	165.6200	2
28	128.1339														R(-.98)	200.1183	182.1077	183.0913	174.1389	156.1284	157.1119	100.5591	87.5695	1

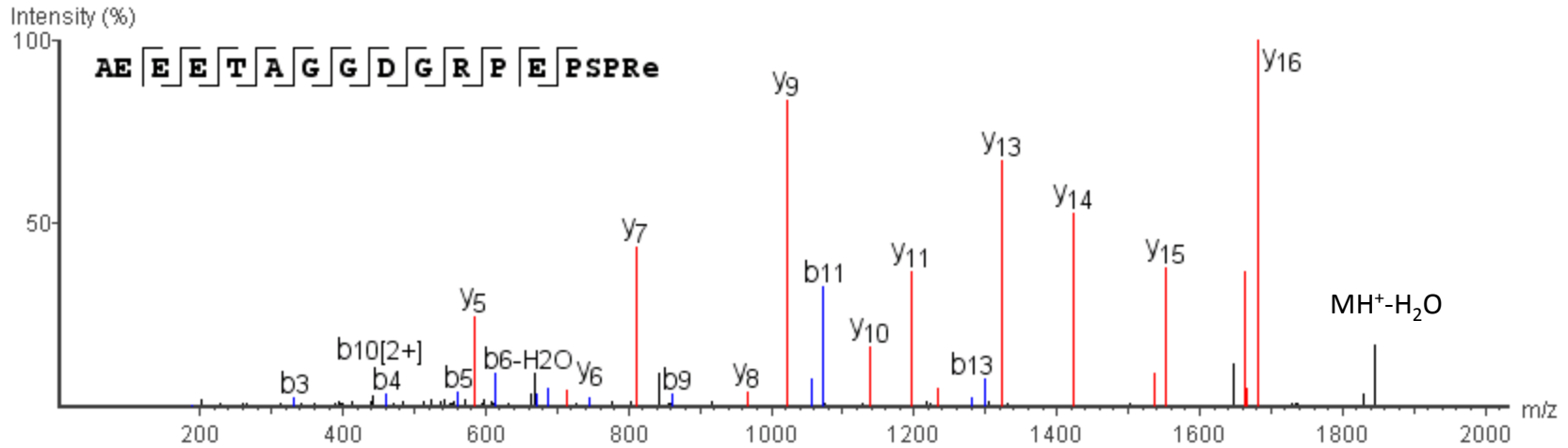


m/z=941.9301

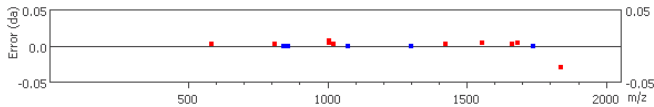
Error=0.3ppm

AEEETAGGDGRPEPSPRE(-.98).G

Z=2



#	Immonium	b	b-H2O	b-NH3	a	a-H2O	a-NH3	c	c-H2O	c-NH3	c-H	b(2+)	a(2+)	c(2+)	Seq	x	x-H2O	x-NH3	y	y-H2O	y-NH3	x(2+)	y(2+)	#	
1	44.0499	72.0449	54.0344	55.0179	44.0499	26.0394	27.0229	89.0719	71.0614	72.0449	88.0641	36.5225	22.5250	45.0360	A										18
2	102.0554	201.0875	183.0770	184.0605	173.0925	155.0820	156.0655	218.1145	200.1040	201.0875	217.1067	101.0438	87.0463	109.5573	E	1837.8295	1819.7881	1820.7717	1811.8193	1793.8088	1794.7924	919.3994	906.4097	17	
3	102.0554	330.1301	312.1195	313.1031	302.1351	284.1245	285.1081	347.1571	329.1465	330.1301	346.1493	165.5650	151.5676	174.0786	E	1708.7562	1690.7456	1691.7292	1682.7711	1664.7621	1665.7499	854.8781	841.8884	16	
4	102.0554	459.1727	441.1621	442.1457	431.1777	413.1671	414.1507	476.1997	458.1891	459.1727	475.1919	230.0863	216.0888	238.5998	E	1579.7136	1561.7030	1562.6866	1553.7296	1535.7238	1536.7073	790.3568	777.3671	15	
5	74.0605	560.2203	542.2098	543.1934	532.2253	514.2148	515.1984	577.2474	559.2368	560.2203	576.2395	280.6102	266.6127	289.1237	T	1450.6710	1432.6604	1433.6440	1424.6871	1406.6812	1407.6647	725.8355	712.8458	14	
6	44.0499	631.2574	613.2469	614.2305	603.2625	585.2519	586.2355	648.2845	630.2739	631.2574	647.2766	316.1287	302.1312	324.6422	A	1349.6233	1331.6127	1332.5963	1323.6439	1305.6334	1306.6169	675.3116	662.3220	13	
7	30.0343	688.2789	670.2684	671.2520	660.2839	642.2734	643.2570	705.3060	687.2954	688.2789	704.2981	344.6395	330.6420	353.1530	G	1278.5862	1260.5756	1261.5592	1252.6068	1234.5963	1235.5798	639.7931	626.8034	12	
8	30.0343	745.3004	727.2899	728.2734	717.3054	699.2949	700.2784	762.3275	744.3169	745.3004	761.3196	373.1502	359.1527	381.6637	G	1221.5647	1203.5541	1204.5377	1195.5853	1177.5748	1178.5583	611.2823	598.2927	11	
9	88.0398	860.3263	842.3153	843.3004	832.3323	814.3218	815.3054	877.3544	859.3438	860.3263	876.3465	430.6637	416.6662	439.1772	D	1164.5433	1146.5327	1147.5164	1138.5640	1120.5535	1121.5370	582.7717	569.7820	10	
10	30.0343	917.3488	899.3383	900.3218	889.3538	871.3433	872.3268	934.3759	916.3653	917.3488	933.3680	459.1744	445.1769	467.6879	G	1049.5164	1031.5057	1032.4894	1023.5328	1005.5211	1006.5012	525.2582	512.2685	9	
11	129.1139	1073.4492	1055.4395	1056.4230	1045.4550	1027.4445	1028.4280	1090.4769	1072.4664	1073.4492	1089.4691	537.2250	523.2275	545.7385	R	992.4949	974.4843	975.4679	966.5155	948.5049	949.4885	496.7474	483.7578	8	
12	70.0656	1170.5027	1152.4922	1153.4757	1142.5077	1124.4972	1125.4807	1187.5297	1169.5192	1170.5027	1186.5219	585.7513	571.7538	594.2648	P	836.3938	818.3832	819.3668	810.4104	792.4039	793.3875	418.6969	405.7072	7	
13	102.0554	1299.5458	1281.5348	1282.5183	1271.5503	1253.5398	1254.5233	1316.5723	1298.5618	1299.5458	1315.5645	650.2726	636.2751	658.7861	E	739.3410	721.3304	722.3140	713.3616	695.3511	696.3347	370.1705	357.1808	6	
14	70.0656	1396.5980	1378.5875	1379.5710	1368.6030	1350.5925	1351.5760	1413.6250	1395.6145	1396.5980	1412.6172	698.7990	684.8015	707.3125	P	610.2985	592.2879	593.2715	584.3151	566.3085	567.2921	305.6492	292.6595	5	
15	60.0449	1483.6300	1465.6195	1466.6030	1455.6350	1437.6245	1438.6080	1500.6570	1482.6465	1483.6300	1499.6492	742.3150	728.3175	750.8285	S	513.2457	495.2351	496.2187	487.2663	469.2557	470.2393	257.1228	244.1331	4	
16	70.0656	1580.6827	1562.6722	1563.6558	1552.6877	1534.6772	1535.6608	1597.7097	1579.6992	1580.6827	1596.7019	790.8414	776.8439	799.3549	P	426.2137	408.2031	409.1866	400.2343	382.2237	383.2073	213.6068	200.6171	3	
17	129.1139	1736.7839	1718.7734	1719.7570	1708.7889	1690.7784	1691.7620	1753.8109	1735.8004	1736.7839	1752.8031	868.8920	854.8945	877.4055	R	329.1609	311.1503	312.1339	303.1815	285.1710	286.1545	165.0804	152.0908	2	
18	101.0754														E(-.98)	173.0598	155.0492	156.0328	147.0804	129.0699	130.0534	87.0299	74.0402	1	

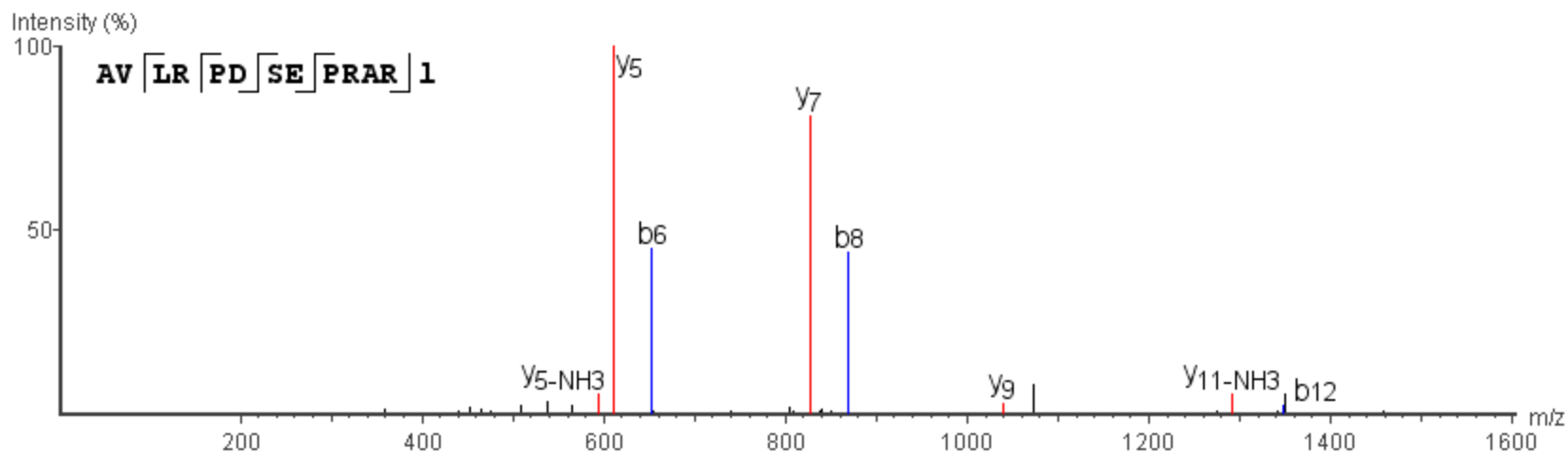


V.LRPDSEPRARL(-.98).G

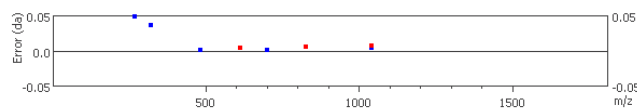
m/z=436.9219

Error=1.3ppm

Z=3



#	Immonium	b	b-H2O	b-NH3	a	a-H2O	a-NH3	c	c-H2O	c-NH3	c-H	b (2+)	a (2+)	c (2+)	Seq	x	x-H2O	x-NH3	y	y-H2O	y-NH3	x (2+)	y (2+)	#	
1	86.0969	114.0919	96.0813	97.0649	86.0969	68.0863	69.0699	131.1189	113.1083	114.0919	130.1111	57.5459	43.5484	66.0594	L										11
2	129.1139	270.1930	252.1824	253.1660	242.1980	224.1874	225.1710	287.2200	269.1599	270.1930	286.2122	135.5965	121.5990	144.1100	R	1221.6488	1203.6382	1204.6218	1195.6694	1177.6589	1178.6425	611.3244	598.3347	10	
3	70.0656	367.2457	349.2352	350.2188	339.2507	321.2402	322.1867	384.2727	366.2622	367.2457	383.2649	184.1229	170.1254	192.6364	P	1065.5476	1047.5370	1048.5206	1039.5604	1021.5577	1022.5413	533.2738	520.2841	9	
4	88.0398	482.2708	464.2621	465.2457	454.2777	436.2671	437.2507	499.2997	481.2891	482.2708	498.2919	241.6363	227.6388	250.1498	D	968.4949	950.4843	951.4679	942.5155	924.5049	925.4885	484.7474	471.7578	8	
5	60.0449	569.3047	551.2941	552.2777	541.3097	523.2991	524.2827	586.3317	568.3212	569.3047	585.3239	285.1523	271.1548	293.6659	S	853.4680	835.4574	836.4409	827.4819	809.4780	810.4616	427.2340	414.2443	7	
6	102.0554	698.3447	680.3367	681.3203	670.3523	652.3417	653.3253	715.3743	697.3638	698.3447	714.3665	349.6736	335.6761	358.1872	E	766.4359	748.4254	749.4089	740.4565	722.4460	723.4296	383.7180	370.7283	6	
7	70.0656	795.4000	777.3895	778.3730	767.4050	749.3945	750.3781	812.4271	794.4165	795.4000	811.4192	398.2000	384.2025	406.7135	P	637.3933	619.3828	620.3663	611.4080	593.4034	594.3870	319.1967	306.2070	5	
8	129.1139	951.5012	933.4906	934.4742	923.5062	905.4956	906.4792	968.5282	950.5176	951.5012	967.5203	476.2506	462.2531	484.7641	R	540.3406	522.3300	523.3136	514.3612	496.3506	497.3342	270.6703	257.6806	4	
9	44.0499	1022.5383	1004.5277	1005.5113	994.5433	976.5327	977.5163	1039.5604	1021.5547	1022.5383	1038.5575	511.7692	497.7716	520.2827	A	384.2395	366.2289	367.2125	358.2601	340.2495	341.2331	192.6197	179.6301	3	
10	129.1139	1178.6394	1160.6289	1161.6124	1150.6444	1132.6339	1133.6174	1195.6664	1177.6559	1178.6394	1194.6586	589.8197	575.8222	598.3332	R	313.2024	295.1918	296.1754	287.2230	269.2124	270.1960	157.1012	144.1115	2	
11	85.1169														L(-.98)	157.1012	139.0907	140.0742	131.1219	113.1113	114.0949	79.0506	66.0609	1	

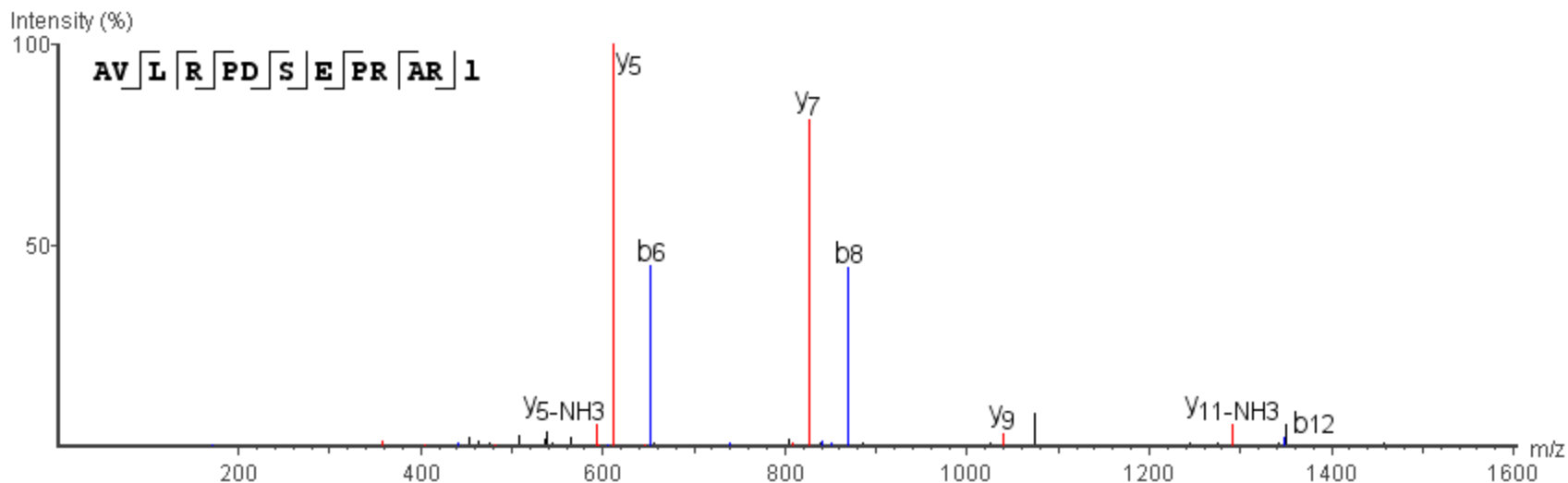


m/z=493.6242

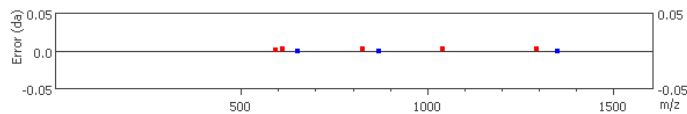
Error=2.2ppm

R.AVLRPDSEPRARL(-.98).G

Z=3



#	Immonium	b	b-H2O	b-NH3	a	a-H2O	a-NH3	c	c-H2O	c-NH3	c-H	b (2+)	a (2+)	c (2+)	Seq	x	x-H2O	x-NH3	y	y-H2O	y-NH3	x (2+)	y (2+)	#	
1	44.0499	72.0449	54.0344	55.0179	44.0499	26.0394	27.0229	89.0719	71.0614	72.0449	88.0641	36.5225	22.5250	45.0360	A										13
2	72.0812	171.1134	153.1028	154.0863	143.1183	125.1078	126.0914	188.1404	170.1298	171.1134	187.1325	86.0567	72.0592	94.5702	V	1433.8013	1415.7906	1416.7743	1407.8219	1389.8114	1390.7949	717.4006	704.4109	12	
3	86.0969	284.1974	266.1868	267.1704	256.2024	238.1918	239.1754	301.2244	283.2138	284.1974	300.2166	142.5987	128.6012	151.1122	L	1334.7328	1316.7222	1317.7058	1308.7534	1290.7429	1291.7219	667.8664	654.8767	11	
4	129.1139	440.2985	422.2879	423.2715	412.3035	394.2929	395.2765	457.3255	439.3149	440.2985	456.3177	220.6492	206.6517	229.1628	R	1221.6488	1203.6382	1204.6218	1195.6694	1177.6589	1178.6425	611.3244	598.3347	10	
5	70.0656	537.3513	519.3407	520.3243	509.3563	491.3457	492.3293	554.3783	536.3677	537.3513	553.3704	269.1756	255.1781	277.6891	P	1065.5476	1047.5370	1048.5206	1039.5638	1021.5577	1022.5413	533.2738	520.2841	9	
6	88.0398	652.3774	634.3676	635.3512	624.3832	606.3726	607.3562	669.4052	651.3947	652.3774	668.3973	326.6891	312.6916	335.2026	D	968.4949	950.4843	951.4679	942.5155	924.5049	925.4885	484.7474	471.7578	8	
7	60.0449	739.4102	721.3997	722.3832	711.4152	693.4047	694.3882	756.4373	738.4267	739.4102	755.4294	370.2051	356.2076	378.7186	S	853.4680	835.4574	836.4409	827.4846	809.4780	810.4616	427.2340	414.2443	7	
8	102.0554	868.4521	850.4423	851.4258	840.4578	822.4473	823.4308	885.4799	867.4693	868.4521	884.4720	434.7264	420.7289	443.2399	E	766.4359	748.4254	749.4089	740.4565	722.4460	723.4296	383.7180	370.7283	6	
9	70.0656	965.5056	947.4950	948.4786	937.5106	919.5000	920.4836	982.5326	964.5220	965.5056	981.5247	483.2528	469.2553	491.7663	P	637.3933	619.3828	620.3663	611.4108	593.4034	594.3840	319.1967	306.2070	5	
10	129.1139	1121.6067	1103.5962	1104.5797	1093.6117	1075.6012	1076.5847	1138.6337	1120.6232	1121.6067	1137.6259	561.3033	547.3058	569.8168	R	540.3406	522.3300	523.3136	514.3612	496.3506	497.3342	270.6703	257.6806	4	
11	44.0499	1192.6438	1174.6333	1175.6168	1164.6488	1146.6383	1147.6218	1209.6708	1191.6603	1192.6438	1208.6630	596.8219	582.8244	605.3354	A	384.2395	366.2289	367.2125	358.2601	340.2495	341.2331	192.6197	179.6301	3	
12	129.1139	1348.7441	1330.7344	1331.7179	1320.7499	1302.7394	1303.7229	1365.7719	1347.7614	1348.7441	1364.7640	674.8724	660.8749	683.3859	R	313.2024	295.1918	296.1754	287.2230	269.2124	270.1960	157.1012	144.1115	2	
13	85.1169														L(-.98)	157.1012	139.0907	140.0742	131.1219	113.1113	114.0949	79.0506	66.0609	1	

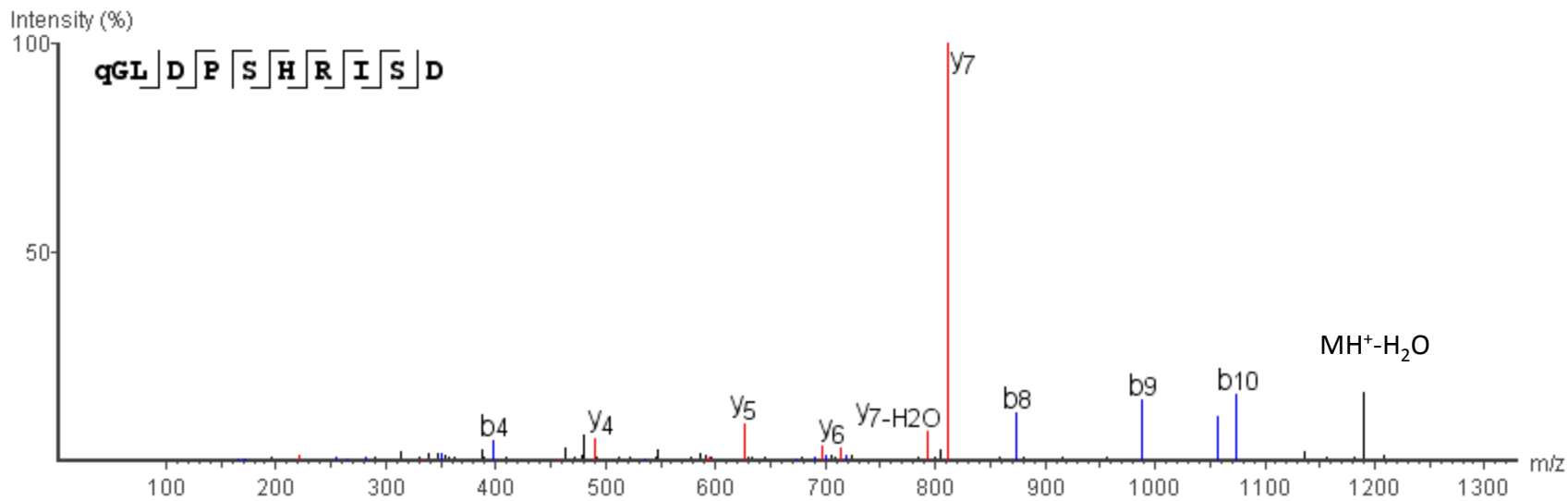


L.Q(-17.03)GLDPSHRISD.R

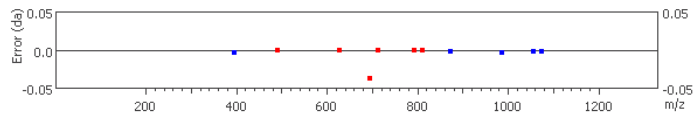
m/z=604.2899

Z=2

Error=2ppm



#	Immonium	b	b-H2O	b-NH3	a	a-H2O	a-NH3	c	c-H2O	c-NH3	c-H	b (2+)	a (2+)	c (2+)	Seq	x	x-H2O	x-NH3	y	y-H2O	y-NH3	x (2+)	y (2+)	#	
1	84.0414	112.0364	94.0258	95.0094	84.0414	66.0308	67.0144	129.0634	111.0528	112.0364	128.0556	56.5182	42.5207	65.0317	Q(-17.03)										11
2	30.0343	169.0579	151.0473	152.0309	141.0629	123.0523	124.0359	186.0849	168.0743	169.0579	185.0771	85.0289	71.0314	93.5424	G	1122.5175	1104.5068	1105.4905	1096.5381	1078.5276	1079.5111	561.7587	548.7690	10	
3	86.0969	282.1419	264.1313	265.1149	254.1469	236.1364	237.1199	299.1689	281.1584	282.1419	298.1611	141.5710	127.5735	150.0845	L	1065.4960	1047.4855	1048.4690	1039.5167	1021.5061	1022.4897	533.2480	520.2584	9	
4	88.0398	397.1726	379.1583	380.1419	369.1739	351.1633	352.1469	414.1959	396.1853	397.1726	413.1880	199.0844	185.0869	207.5979	D	952.4120	934.4014	935.3850	926.4326	908.4221	909.4056	476.7060	463.7163	8	
5	70.0656	494.2216	476.2111	477.1946	466.2266	448.2161	449.1996	511.2487	493.2381	494.2216	510.2408	247.6108	233.6133	256.1243	P	837.3850	819.3745	820.3580	811.4062	793.3958	794.3787	419.1925	406.2028	7	
6	60.0449	581.2537	563.2431	564.2267	553.2587	535.2481	536.2317	598.2807	580.2701	581.2537	597.2728	291.1268	277.1293	299.6404	S	740.3323	722.3217	723.3053	714.3529	696.3798	697.3259	370.6661	357.6765	6	
7	110.0717	718.3126	700.3020	701.2856	690.3176	672.3070	673.2906	735.3396	717.3290	718.3126	734.3317	359.6563	345.6588	368.1698	H	653.3002	635.2897	636.2732	627.3215	609.3103	610.2939	327.1501	314.1604	5	
8	129.1139	874.4164	856.4031	857.3867	846.4186	828.4081	829.3917	891.4407	873.4301	874.4164	890.4328	437.7068	423.7093	446.2203	R	516.2413	498.2308	499.2143	490.2622	472.2514	473.2350	258.6207	245.6310	4	
9	86.0969	987.5021	969.4872	970.4708	959.5027	941.4922	942.4758	1004.5248	986.5142	987.5021	1003.5169	494.2489	480.2514	502.7624	I	360.1402	342.1297	343.1132	334.1609	316.1503	317.1339	180.5701	167.5804	3	
10	60.0449	1074.5327	1056.5223	1057.5028	1046.5348	1028.5243	1029.5078	1091.5568	1073.5463	1074.5327	1090.5490	537.7649	523.7674	546.2784	S	247.0562	229.0456	230.0291	221.0768	203.0662	204.0498	124.0281	111.0384	2	
11	88.0398														D	160.0241	142.0136	142.9971	134.0448	116.0342	117.0178	80.5121	67.5224	1	

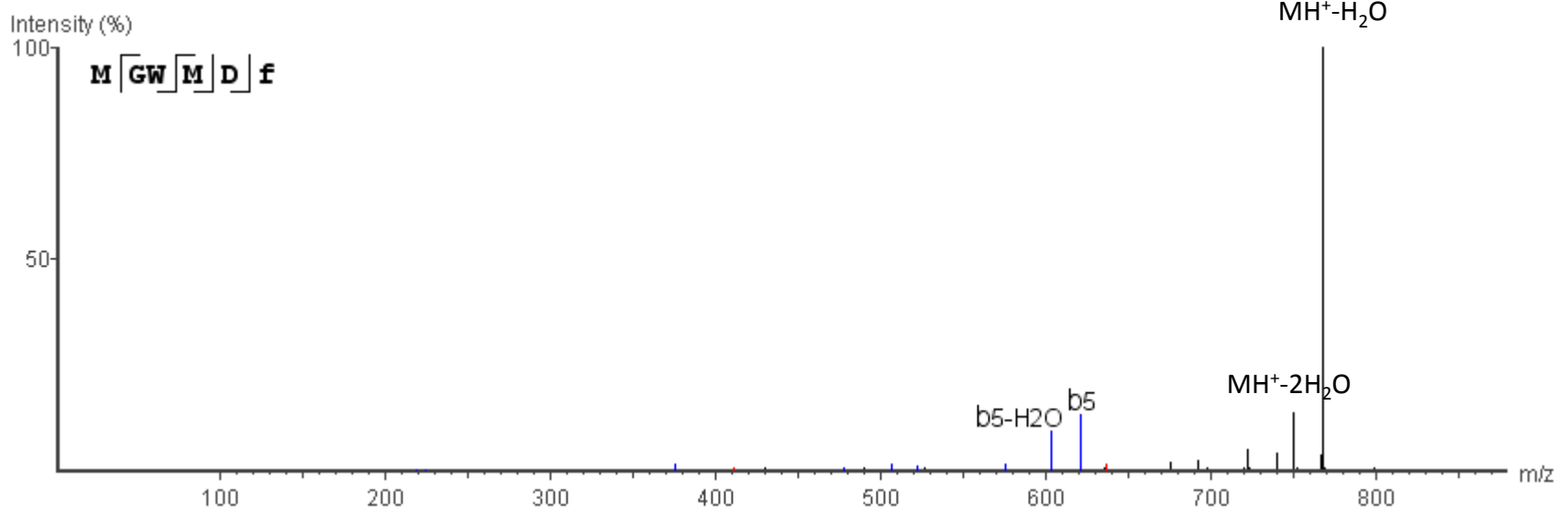


Y.MGWMDF(-.98).G

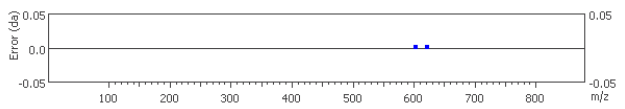
m/z=785.3115

Error=0.8ppm

Z=1



#	Immonium	b	b-H2O	b-NH3	a	a-H2O	a-NH3	c	c-H2O	c-NH3	c-H	b (2+)	a (2+)	c (2+)	Seq	x	x-H2O	x-NH3	y	y-H2O	y-NH3	x (2+)	y (2+)	#		
1	104.0533	132.0483	114.0378	115.0213	104.0533	86.0428	87.0263	149.0753	131.0648	132.0483	148.0675	66.5242	52.5267	75.0377	M											6
2	30.0343	189.0698	171.0592	172.0428	161.0748	143.0642	144.0478	206.0968	188.0862	189.0698	205.0890	95.0349	81.0374	103.5484	G	680.2538	662.2432	663.2268	654.2744	636.2639	637.2474	340.6269	327.6372	5		
3	159.0921	375.1491	357.1385	358.1221	347.1541	329.1435	330.1271	392.1761	374.1655	375.1491	391.1683	188.0745	174.0770	196.5880	W	623.2324	605.2218	606.2053	597.2530	579.2424	580.2260	312.1162	299.1265	4		
4	104.0533	506.1896	488.1790	489.1626	478.1946	460.1840	461.1676	523.2166	505.2060	506.1896	522.2087	253.5948	239.5973	262.1083	M	437.1530	419.1425	420.1260	411.1737	393.1631	394.1467	219.0765	206.0868	3		
5	88.0398	621.2143	603.2036	604.1896	593.2216	575.2110	576.1946	638.2436	620.2330	621.2143	637.2357	311.1083	297.1108	319.6218	D	306.1125	288.1020	289.0855	280.1332	262.1226	263.1062	153.5563	140.5666	2		
6	119.1012														F(-.98)	191.0856	173.0750	174.0586	165.1062	147.0957	148.0792	96.0428	83.0531	1		

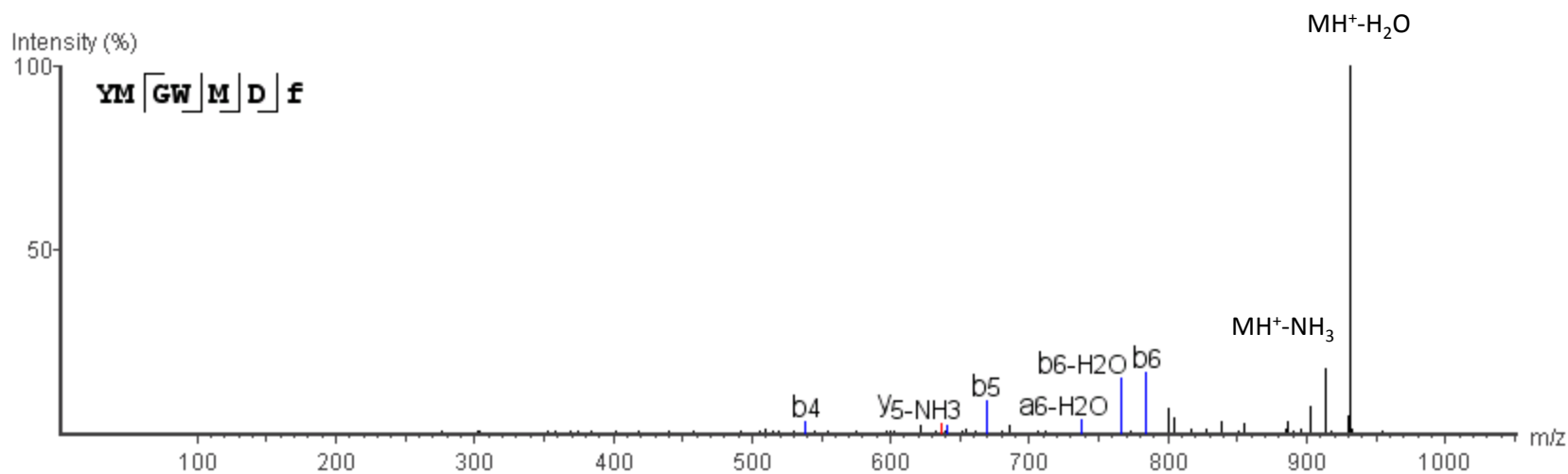


D.YMGWMDF(-.98).G

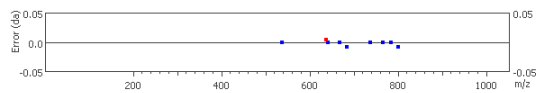
m/z=948.3752

Error=1ppm

Z=1



#	Inmonium	b	b-H2O	b-NH3	a	a-H2O	a-NH3	c	c-H2O	c-NH3	c-H	b (2+)	a (2+)	c (2+)	Seq	x	x-H2O	x-NH3	y	y-H2O	y-NH3	x (2+)	y (2+)	#	
1	136.0761	164.0712	146.0606	147.0441	136.0761	118.0656	119.0491	181.0981	163.0876	164.0712	180.0903	82.5356	68.5381	91.0491	Y										7
2	104.0533	295.1116	277.1011	278.0847	267.1166	249.1061	250.0896	312.1386	294.1281	295.1116	311.1308	148.0558	134.0583	156.5693	M	811.2943	793.2838	794.2673	785.3149	767.3044	768.2880	406.1472	393.1575	6	
3	30.0343	352.1331	334.1225	335.1061	324.1381	306.1275	307.1111	369.1601	351.1495	352.1331	368.1523	176.5665	162.5690	185.0800	G	680.2538	662.2432	663.2268	654.2744	636.2639	637.2421	340.6269	327.6372	5	
4	159.0921	538.2112	520.2018	521.1854	510.2174	492.2068	493.1904	555.2394	537.2289	538.2112	554.2316	269.6062	255.6087	278.1197	W	623.2324	605.2218	606.2053	597.2530	579.2424	580.2260	312.1162	299.1265	4	
5	104.0533	669.2522	651.2424	652.2260	641.2578	623.2474	624.2310	686.2800	668.2694	669.2522	685.2812	335.1265	321.1290	343.6400	M	437.1530	419.1425	420.1260	411.1737	393.1631	394.1467	219.0765	206.0868	3	
6	88.0398	784.2788	766.2679	767.2529	756.2849	738.2732	739.2579	801.3069	783.2963	784.2788	800.3070	392.6399	378.6424	401.1534	D	306.1125	288.1020	289.0855	280.1332	262.1226	263.1062	153.5563	140.5666	2	
7	119.1012														F(-.98)	191.0856	173.0750	174.0586	165.1062	147.0957	148.0792	96.0428	83.0531	1	

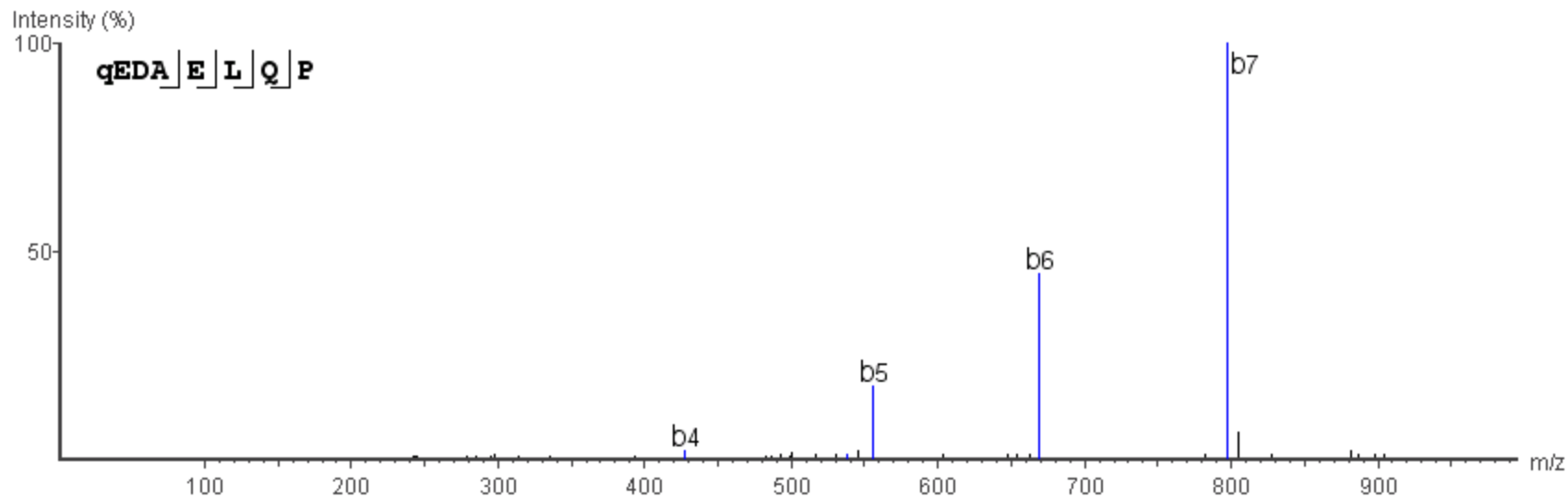


A.Q(-17.03)EDAELQP.R

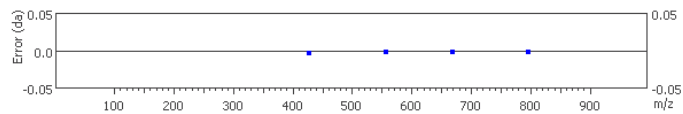
m/z=912.3934

Z=1

Error=-1.2ppm



#	Immonium	b	b-H2O	b-NH3	a	a-H2O	a-NH3	c	c-H2O	c-NH3	c-H	b (2+)	a (2+)	c (2+)	Seq	x	x-H2O	x-NH3	y	y-H2O	y-NH3	x (2+)	y (2+)	#	
1	84.0414	112.0364	94.0258	95.0094	84.0414	66.0308	67.0144	129.0634	111.0528	112.0364	128.0556	56.5182	42.5207	65.0317	Q(-17.03)										8
2	102.0554	241.0790	223.0684	224.0520	213.0840	195.0734	196.0570	258.1060	240.0954	241.0790	257.0982	121.0395	107.0420	129.5530	E	827.3418	809.3312	810.3148	801.3624	783.3519	784.3354	414.1709	401.1812	7	
3	88.0398	356.1059	338.0954	339.0789	328.1109	310.1004	311.0839	373.1329	355.1224	356.1059	372.1251	178.5530	164.5555	187.0665	D	698.2992	680.2886	681.2722	672.3198	654.3093	655.2928	349.6496	336.6599	6	
4	44.0499	427.1463	409.1325	410.1161	399.1480	381.1375	382.1210	444.1700	426.1595	427.1463	443.1622	214.0715	200.0740	222.5850	A	583.2723	565.2617	566.2452	557.2929	539.2823	540.2659	292.1361	279.1465	5	
5	102.0554	556.1881	538.1750	539.1586	528.1906	510.1801	511.1636	573.2126	555.2021	556.1881	572.2048	278.5928	264.5953	287.1063	E	512.2352	494.2246	495.2082	486.2558	468.2452	469.2288	256.6176	243.6279	4	
6	86.0969	669.2720	651.2591	652.2427	641.2747	623.2641	624.2477	686.2967	668.2861	669.2720	685.2888	335.1348	321.1373	343.6483	L	383.1926	365.1820	366.1656	357.2132	339.2027	340.1862	192.0963	179.1066	3	
7	101.0714	797.3307	779.3177	780.3013	769.3333	751.3227	752.3063	814.3553	796.3447	797.3307	813.3474	399.1641	385.1666	407.6776	Q	270.1085	252.0980	253.0815	244.1292	226.1186	227.1022	135.5543	122.5646	2	
8	70.0656														P	142.0499	124.0394	125.0229	116.0706	98.0600	99.0436	71.5250	58.5353	1	

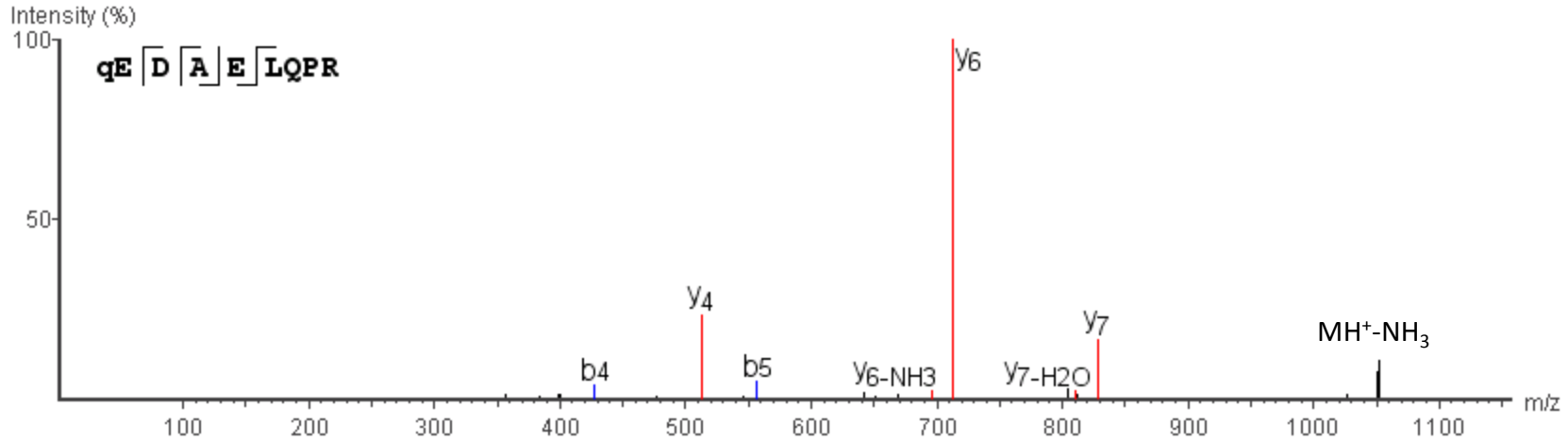


A.Q(-17.03)EDAELQPR.A

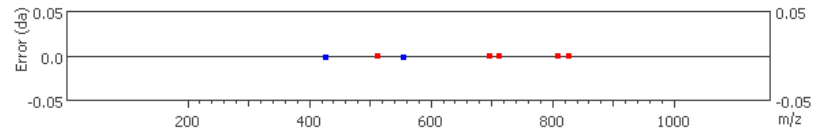
m/z=1068.4962

Error=0.6ppm

Z=1



#	Immonium	b	b-H2O	b-NH3	a	a-H2O	a-NH3	c	c-H2O	c-NH3	b (2+)	a (2+)	c (2+)	Seq	x	x-H2O	x-NH3	y	y-H2O	y-NH3	x (2+)	y (2+)	#	
1	84.04	112.04	94.03	95.01	84.04	66.03	67.01	129.06	111.05	112.04	56.52	42.52	65.03	Q(-17.03)										9
2	102.06	241.08	223.07	224.05	213.08	195.07	196.06	258.11	240.10	241.08	121.04	107.04	129.55	E	983.44	965.43	966.42	957.46	939.45	940.44	492.22	479.23	8	
3	88.04	356.11	338.10	339.08	328.11	310.10	311.08	373.13	355.12	356.11	178.55	164.56	187.07	D	854.40	836.39	837.37	828.42	810.41	811.39	427.70	414.71	7	
4	44.05	427.15	409.13	410.12	399.15	381.14	382.12	444.17	426.16	427.15	214.07	200.07	222.59	A	739.37	721.36	722.35	713.39	695.38	696.37	370.19	357.20	6	
5	102.06	556.19	538.18	539.16	528.19	510.18	511.16	573.21	555.20	556.19	278.59	264.60	287.11	E	668.34	650.33	651.31	642.36	624.35	625.33	334.67	321.68	5	
6	86.10	669.27	651.26	652.24	641.27	623.26	624.25	686.30	668.29	669.27	335.13	321.14	343.65	L	539.29	521.28	522.27	513.31	495.30	496.29	270.15	257.16	4	
7	101.07	797.33	779.32	780.30	769.33	751.32	752.31	814.36	796.34	797.33	399.16	385.17	407.68	Q	426.21	408.20	409.18	400.23	382.22	383.20	213.60	200.62	3	
8	70.07	894.38	876.37	877.35	866.39	848.38	849.36	911.41	893.40	894.38	447.69	433.69	456.20	P	298.15	280.14	281.12	272.17	254.16	255.14	149.58	136.59	2	
9	129.11													R	201.10	183.09	184.07	175.12	157.11	158.09	101.05	88.06	1	

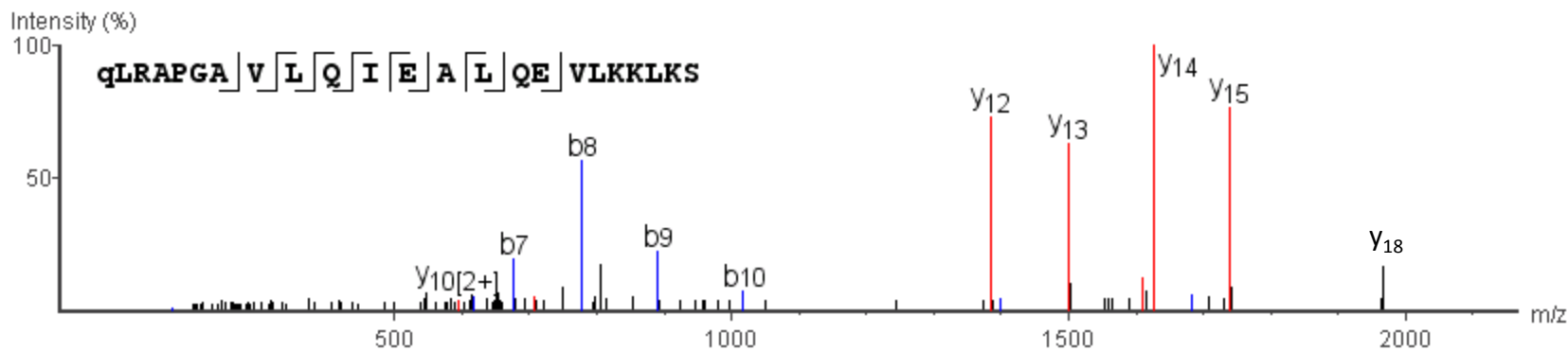


Q(-17.03)LRAPGAVLQIEALQEVLLKLLKS.K

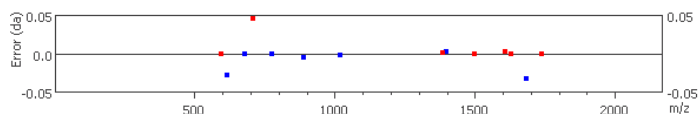
m/z=629.6286

Error=-1.7ppm

Z=4



#	Immonium	b	b-H2O	b-NH3	a	a-H2O	a-NH3	c	c-H2O	c-NH3	c-H	b(2+)	a(2+)	c(2+)	Seq	x	x-H2O	x-NH3	y	y-H2O	y-NH3	x(2+)	y(2+)	#	
1	84.0414	112.0364	94.0258	95.0094	84.0414	66.0308	67.0144	129.0634	111.0528	112.0364	128.0556	56.5182	42.5207	65.0317	Q(-17.03)										23
2	86.0969	225.1205	207.1099	208.0935	197.1255	179.1149	180.0985	242.1475	224.1369	225.1205	241.1396	113.0602	99.0627	121.5737	L	2430.4441	2412.4336	2413.4172	2404.4648	2386.4543	2387.4377	1215.7220	1202.7324	22	
3	129.1139	381.2216	363.2110	364.1946	353.2266	335.2160	336.1996	398.2486	380.2380	381.2216	397.2408	191.1108	177.1133	199.6243	R	2317.3601	2299.3496	2300.3333	2291.3809	2273.3704	2274.3538	1159.1801	1146.1904	21	
4	44.0499	452.2587	434.2481	435.2317	424.2637	406.2531	407.2367	469.2857	451.2751	452.2587	468.2779	226.6293	212.6318	235.1428	A	2161.2590	2143.2485	2144.2322	2135.2798	2117.2693	2118.2527	1081.1295	1068.1399	20	
5	70.0656	549.3114	531.3008	532.2844	521.3164	503.3058	504.2894	566.3384	548.3279	549.3114	565.3306	275.1557	261.1582	283.6692	P	2090.2219	2072.2114	2073.1951	2064.2427	2046.2322	2047.2158	1045.6110	1032.6213	19	
6	30.0343	606.3329	588.3223	589.3059	578.3379	560.3273	561.3109	623.3599	605.3494	606.3329	622.3521	303.6664	289.6689	312.1800	G	1993.1692	1975.1586	1976.1422	1967.1898	1949.1793	1950.1628	997.0846	984.0949	18	
7	44.0499	677.3712	659.3594	660.3430	649.3750	631.3644	632.3480	694.3970	676.3865	677.3712	693.3892	339.1850	325.1875	347.6985	A	1936.1478	1918.1372	1919.1208	1910.1685	1892.1580	1893.1415	968.5739	955.5842	17	
8	72.0812	776.4396	758.4279	759.4114	748.4434	730.4329	731.4164	793.4655	775.4549	776.4396	792.4576	388.7192	374.7217	397.2327	V	1865.1107	1847.1001	1848.0837	1839.1313	1821.1208	1822.1044	933.0554	920.0657	16	
9	86.0969	889.5276	871.5119	872.4955	861.5275	843.5169	844.5005	906.5495	888.5389	889.5276	905.5416	445.2612	431.2637	453.7747	L	1766.0422	1748.0316	1749.0153	1740.0634	1722.0524	1723.0359	883.5211	870.5314	15	
10	101.0714	1017.5828	999.5705	1000.5541	989.5861	971.5755	972.5591	1034.6080	1016.5975	1017.5828	1033.6002	509.2905	495.2930	517.8040	Q	1652.9581	1634.9475	1635.9312	1626.9777	1608.9683	1609.9484	826.9791	813.9894	14	
11	86.0969	1130.6652	1112.6547	1113.6382	1102.6702	1084.6597	1085.6432	1147.6921	1129.6816	1130.6652	1146.6843	565.8326	551.8351	574.3461	I	1524.8997	1506.8890	1507.8727	1498.9198	1480.9098	1481.8933	762.9498	749.9601	13	
12	102.0554	1259.7076	1241.6971	1242.6807	1231.7126	1213.7021	1214.6857	1276.7346	1258.7241	1259.7076	1275.7268	630.3538	616.3845	638.8673	E	1411.8156	1393.8049	1394.7886	1385.8340	1367.8257	1368.8092	706.3616	693.4181	12	
13	44.0499	1330.7448	1312.7343	1313.7178	1302.7498	1284.7393	1285.7228	1347.7717	1329.7612	1330.7448	1346.7639	665.8724	651.8749	674.3859	A	1282.7729	1264.7623	1265.7460	1256.7936	1238.7831	1239.7666	641.8865	628.8968	11	
14	86.0969	1443.8289	1425.8184	1426.8019	1415.8339	1397.8193	1398.8069	1460.8558	1442.8453	1443.8289	1459.8480	722.4144	708.4169	730.9279	L	1211.7358	1193.7252	1194.7089	1185.7565	1167.7460	1168.7295	606.3679	593.3770	10	
15	101.0714	1571.8875	1553.8770	1554.8605	1543.8925	1525.8820	1526.8655	1588.9144	1570.9039	1571.8875	1587.9066	786.4437	772.4462	794.9572	Q	1098.6517	1080.6411	1081.6248	1072.6724	1054.6619	1055.6454	549.8259	536.8362	9	
16	102.0554	1700.9301	1682.9196	1683.9368	1672.9351	1654.9246	1655.9081	1717.9570	1699.9465	1700.9301	1716.9492	850.9650	836.9675	859.4785	E	970.5932	952.5826	953.5662	944.6138	926.6033	927.5869	485.7966	472.8069	8	
17	72.0812	1799.9984	1781.9879	1782.9714	1772.0034	1753.9929	1754.9764	1817.0254	1799.0149	1799.9984	1816.0176	900.4992	886.5017	909.0127	V	841.5506	823.5400	824.5236	815.5712	797.5607	798.5443	421.2753	408.2856	7	
18	86.0969	1913.0825	1895.0720	1896.0555	1885.0875	1867.0770	1868.0605	1930.1095	1912.0990	1913.0825	1929.1017	957.0413	943.0438	965.5547	L	742.4822	724.4716	725.4552	716.5028	698.4922	699.4758	371.7411	358.7514	6	
19	101.1078	2041.1775	2023.1670	2024.1505	2013.1825	1995.1720	1996.1555	2058.2046	2040.1940	2041.1775	2057.1968	1021.0887	1007.0912	1029.6023	K	629.3981	611.3876	612.3711	603.4188	585.4082	586.3918	315.1991	302.2094	5	
20	101.1078	2169.2725	2151.2620	2152.2454	2141.2776	2123.2668	2124.2505	2186.2996	2168.2888	2169.2725	2185.2917	1085.1362	1071.1388	1093.6498	K	501.3032	483.2926	484.2762	475.3238	457.3133	458.2968	251.1516	238.1619	4	
21	86.0969	2282.3564	2264.3459	2265.3293	2254.3616	2236.3508	2237.3345	2299.3835	2281.3728	2282.3564	2298.3757	1141.6782	1127.6808	1150.1918	L	373.2083	355.1977	356.1812	347.2289	329.2183	330.2019	187.1041	174.1144	3	
22	101.1078	2410.4514	2392.4409	2393.4243	2382.4565	2364.4458	2365.4294	2427.4785	2409.4678	2410.4514	2426.4707	1205.7257	1191.7283	1214.2393	K	260.1242	242.1136	243.0972	234.1448	216.1343	217.1178	130.5621	117.5724	2	
23	60.0449														S	132.0292	114.0187	115.0022	106.0499	88.0393	89.0229	66.5146	53.5249	1	

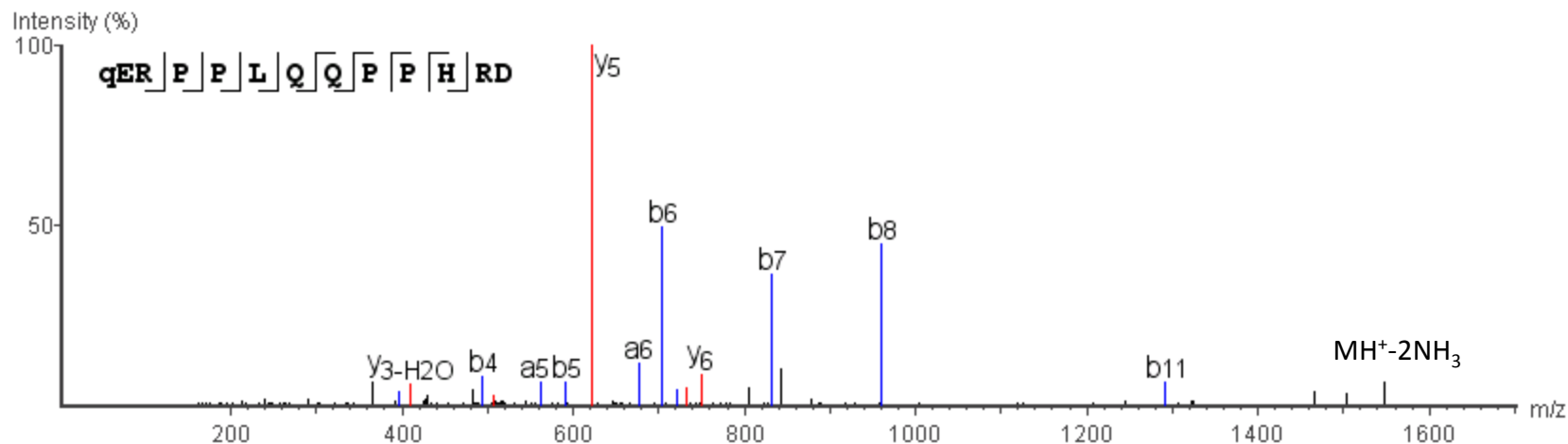


R.Q(-17.03)ERPPLQQPPHRD.K

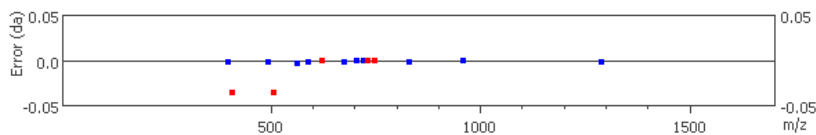
m/z=527.6022

Error=-0.3ppm

Z=3



#	Immonium	b	b-H2O	b-NH3	a	a-H2O	a-NH3	c	c-H2O	c-NH3	b(2+)	a(2+)	c(2+)	Seq	x	x-H2O	x-NH3	y	y-H2O	y-NH3	x(2+)	y(2+)	#	
1	84.04	112.04	94.03	95.01	84.04	66.03	67.01	129.06	111.05	112.04	56.52	42.52	65.03	Q(-17.03)										13
2	102.06	241.08	223.07	224.05	213.08	195.07	196.06	258.11	240.10	241.08	121.04	107.04	129.55	E	1495.74	1477.73	1478.71	1469.76	1451.75	1452.73	748.37	735.38	12	
3	129.11	397.18	379.17	380.15	369.19	351.17	352.16	414.21	396.20	397.18	199.09	185.09	207.60	R	1366.70	1348.69	1349.67	1340.72	1322.71	1323.69	683.85	670.86	11	
4	70.07	494.23	476.22	477.21	466.24	448.23	449.21	511.26	493.25	494.23	247.62	233.62	256.13	P	1210.60	1192.59	1193.57	1184.62	1166.61	1167.59	605.80	592.81	10	
5	70.07	591.29	573.28	574.26	563.29	545.28	546.26	608.31	590.30	591.29	296.14	282.15	304.66	P	1113.54	1095.53	1096.52	1087.56	1069.55	1070.54	557.27	544.28	9	
6	86.10	704.37	686.36	687.34	676.38	658.36	659.35	721.40	703.39	704.37	352.68	338.69	361.20	L	1016.49	998.48	999.46	990.51	972.50	973.48	508.75	495.76	8	
7	101.07	832.43	814.42	815.40	804.43	786.42	787.41	849.46	831.44	832.43	416.71	402.72	425.23	Q	903.41	885.40	886.38	877.43	859.42	860.40	452.20	439.21	7	
8	101.07	960.49	942.48	943.46	932.49	914.48	915.46	977.51	959.50	960.49	480.74	466.75	489.26	Q	775.35	757.34	758.32	749.37	731.36	732.34	388.17	375.18	6	
9	70.07	1057.54	1039.53	1040.51	1029.54	1011.53	1012.52	1074.57	1056.56	1057.54	529.27	515.27	537.78	P	647.29	629.28	630.26	621.31	603.30	604.28	324.14	311.16	5	
10	70.07	1154.59	1136.58	1137.57	1126.60	1108.59	1109.57	1171.62	1153.61	1154.59	577.80	563.80	586.31	P	550.24	532.23	533.21	524.26	506.28	507.23	275.62	262.63	4	
11	110.07	1291.65	1273.64	1274.62	1263.66	1245.65	1246.63	1308.68	1290.67	1291.65	646.33	632.33	654.84	H	453.18	435.17	436.16	427.20	409.23	410.18	227.09	214.10	3	
12	129.11	1447.75	1429.74	1430.73	1419.76	1401.75	1402.73	1464.78	1446.77	1447.75	724.38	710.38	732.89	R	316.13	298.11	299.10	290.15	272.14	273.12	158.56	145.57	2	
13	88.04													D	160.02	142.01	143.00	134.04	116.03	117.02	80.51	67.52	1	

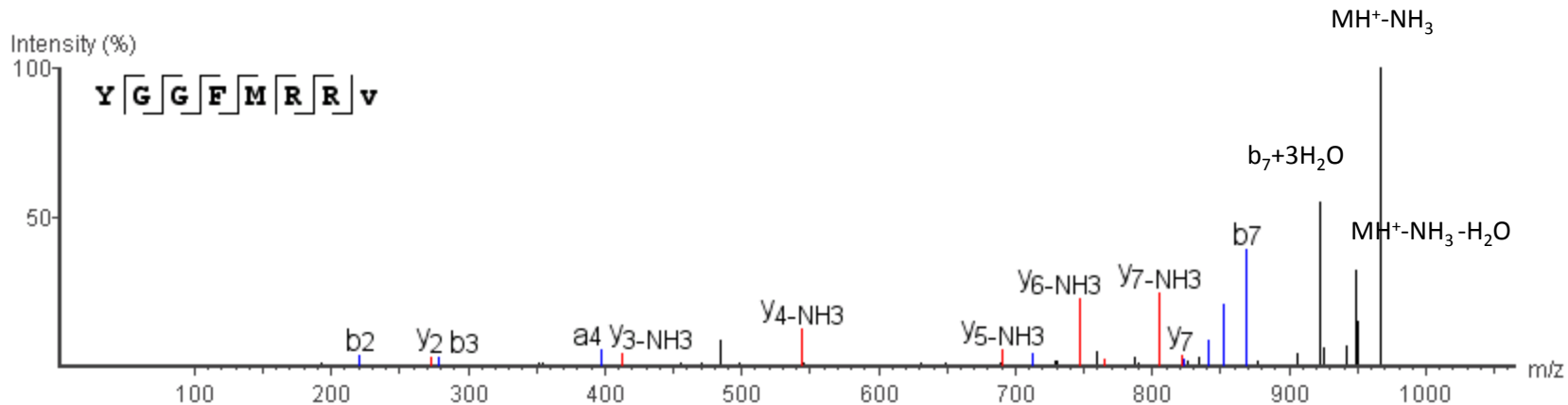


R.YGGFMRRV(-.98).G

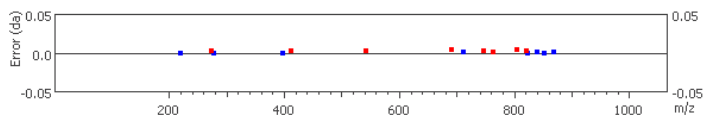
m/z=492.7639

Error=1ppm

Z=2



#	Immonium	b	b-H2O	b-NH3	a	a-H2O	a-NH3	c	c-H2O	c-NH3	c-H	b (2+)	a (2+)	c (2+)	Seq	x	x-H2O	x-NH3	y	y-H2O	y-NH3	x (2+)	y (2+)	#	
1	136.0761	164.0712	146.0606	147.0441	136.0761	118.0656	119.0491	181.0981	163.0876	164.0712	180.0903	82.5356	68.5381	91.0491	Y										8
2	30.0343	221.0920	203.0820	204.0656	193.0976	175.0870	176.0706	238.1196	220.1090	221.0920	237.1118	111.0463	97.0488	119.5598	G	847.4396	829.4291	830.4126	821.4558	803.4497	804.4283	424.2198	411.2301	7	
3	30.0343	278.1142	260.1035	261.0871	250.1191	232.1085	233.0921	295.1411	277.1305	278.1142	294.1333	139.5570	125.5595	148.0705	G	790.4182	772.4076	773.3911	764.4358	746.4282	747.4075	395.7091	382.7194	6	
4	120.0812	425.1825	407.1719	408.1555	397.1868	379.1769	380.1605	442.2095	424.1989	425.1825	441.2017	213.0912	199.0937	221.6047	F	733.3967	715.3862	716.3698	707.4174	689.4068	690.3855	367.1984	354.2087	5	
5	104.0533	556.2230	538.2124	539.1960	528.2280	510.2174	511.2010	573.2500	555.2394	556.2230	572.2421	278.6115	264.6140	287.1250	M	586.3283	568.3177	569.3013	560.3489	542.3384	543.3179	293.6642	280.6745	4	
6	129.1139	712.3218	694.3135	695.2971	684.3291	666.3185	667.3021	729.3511	711.3406	712.3218	728.3433	356.6620	342.6646	365.1756	R	455.2878	437.2773	438.2608	429.3084	411.2979	412.2780	228.1439	215.1542	3	
7	129.1139	868.4235	850.4146	851.3971	840.4286	822.4196	823.4019	885.4522	867.4417	868.4235	884.4443	434.7126	420.7151	443.2261	R	299.1867	281.1761	282.1597	273.2035	255.1968	256.1804	150.0934	137.1037	2	
8	71.1012														V(-.98)	143.0856	125.0750	126.0586	117.1062	99.0957	100.0792	72.0428	59.0531	1	

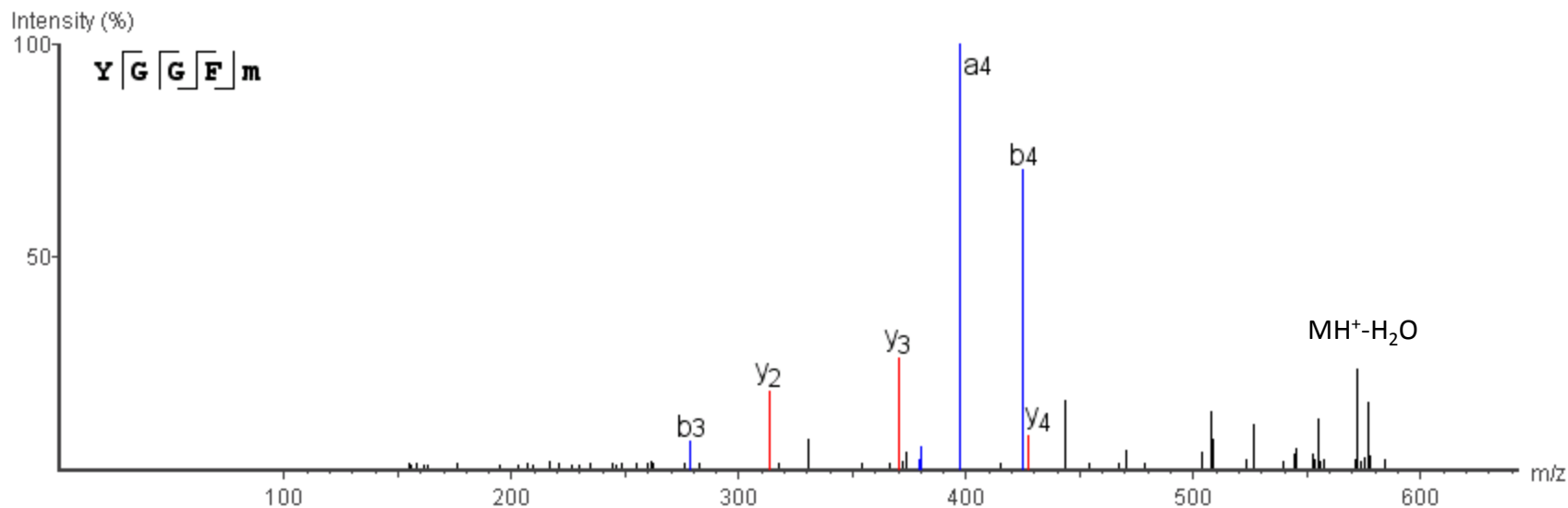


YGGFM(+15.99).R

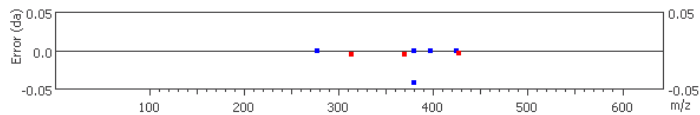
m/z=590.2274

Error=-0.9ppm

Z=1



#	Immonium	b	b-H2O	b-NH3	a	a-H2O	a-NH3	c	c-H2O	c-NH3	c-H	b (2+)	a (2+)	c (2+)	Seq	x	x-H2O	x-NH3	y	y-H2O	y-NH3	x (2+)	y (2+)	#	
1	136.0761	164.0712	146.0606	147.0441	136.0761	118.0656	119.0491	181.0981	163.0876	164.0712	180.0903	82.5356	68.5381	91.0491	Y										5
2	30.0343	221.0926	203.0820	204.0656	193.0976	175.0870	176.0706	238.1196	220.1090	221.0926	237.1118	111.0463	97.0488	119.5598	G	453.1390	435.1285	436.1120	427.1641	409.1491	410.1327	227.0695	214.0798	4	
3	30.0343	278.1135	260.1035	261.0871	250.1191	232.1085	233.0921	295.1411	277.1305	278.1135	294.1333	139.5570	125.5595	148.0705	G	396.1176	378.1070	379.0905	370.1432	352.1276	353.1112	198.5588	185.5691	3	
4	120.0812	425.1815	407.1719	408.1555	397.1869	379.2192	380.1603	442.2095	424.1989	425.1815	441.2017	213.0912	199.0937	221.6047	F	339.0961	321.0855	322.0691	313.1215	295.1062	296.0898	170.0480	157.0584	2	
5	120.0433														M(+15.99)	192.0277	174.0171	175.0007	166.0483	148.0378	149.0213	96.5138	83.5242	1	

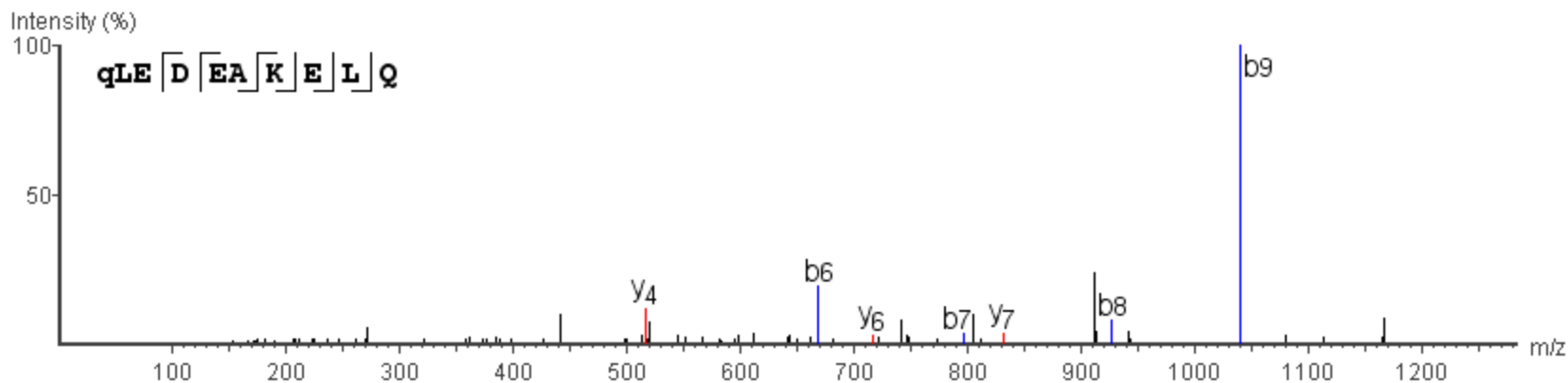


P.Q(-17.03)LEDEAKELQ.K

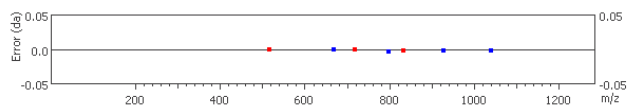
m/z=593.2841

Error=2ppm

Z=2



#	Immonium	b	b-H2O	b-NH3	a	a-H2O	a-NH3	c	c-H2O	c-NH3	c-H	b (2+)	a (2+)	c (2+)	Seq	x	x-H2O	x-NH3	y	y-H2O	y-NH3	x (2+)	y (2+)	#	
1	84.0414	112.0364	94.0258	95.0094	84.0414	66.0308	67.0144	129.0634	111.0528	112.0364	128.0556	56.5182	42.5207	65.0317	Q(-17.03)										10
2	86.0969	225.1205	207.1099	208.0935	197.1255	179.1149	180.0985	242.1475	224.1369	225.1205	241.1396	113.0602	99.0627	121.5737	L	1100.5106	1082.5000	1083.4836	1074.5312	1056.5208	1057.5043	550.7553	537.7656	9	
3	102.0554	354.1630	336.1525	337.1360	326.1680	308.1575	309.1411	371.1900	353.1795	354.1630	370.1822	177.5815	163.5840	186.0950	E	987.4266	969.4160	970.3995	961.4472	943.4366	944.4202	494.2133	481.2236	8	
4	88.0398	469.1900	451.1794	452.1630	441.1950	423.1844	424.1680	486.2170	468.2064	469.1900	485.2092	235.0950	221.0975	243.6085	D	858.3840	840.3735	841.3571	832.4067	814.3941	815.3777	429.6920	416.7023	7	
5	102.0554	598.2325	580.2220	581.2056	570.2375	552.2270	553.2106	615.2596	597.2490	598.2325	614.2517	299.6163	285.6188	308.1298	E	743.3571	725.3465	726.3301	717.3762	699.3671	700.3507	372.1785	359.1888	6	
6	44.0499	669.2709	651.2591	652.2427	641.2747	623.2641	624.2477	686.2967	668.2861	669.2709	685.2888	335.1348	321.1373	343.6483	A	614.3145	596.3039	597.2875	588.3351	570.3245	571.3081	307.6572	294.6675	5	
7	101.1078	797.3687	779.3541	780.3376	769.3696	751.3591	752.3427	814.3917	796.3811	797.3687	813.3838	399.1823	385.1848	407.6958	K	543.2773	525.2668	526.2504	517.2975	499.2874	500.2710	272.1387	259.1490	4	
8	102.0554	926.4102	908.3967	909.3802	898.4122	880.4017	881.3853	943.4343	925.4237	926.4102	942.4264	463.7036	449.7061	472.2171	E	415.1824	397.1719	398.1554	389.2031	371.1925	372.1761	208.0912	195.1015	3	
9	86.0969	1039.4932	1021.4808	1022.4644	1011.4963	993.4858	994.4694	1056.5183	1038.5078	1039.4932	1055.5105	520.2457	506.2482	528.7592	L	286.1398	268.1293	269.1128	260.1605	242.1499	243.1335	143.5699	130.5802	2	
10	101.0714													Q	173.0558	155.0452	156.0288	147.0764	129.0659	130.0494	87.0279	74.0382	1		

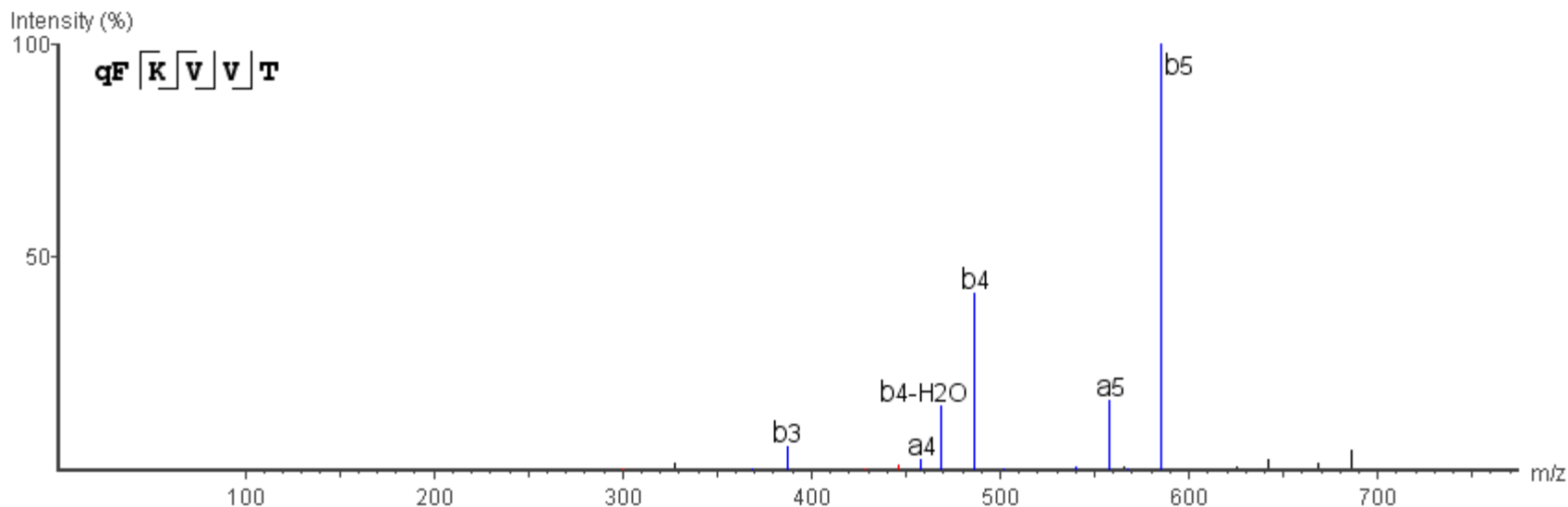


m/z=704.3971

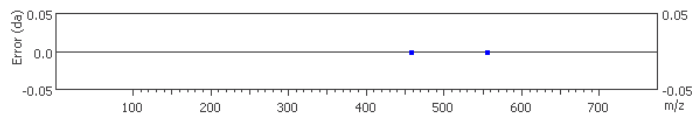
Error=-0.9ppm

R.Q(-17.03)FKVVT.R

Z=1



#	Immonium	b	b-H2O	b-NH3	a	a-H2O	a-NH3	c	c-H2O	c-NH3	c-H	b (2+)	a (2+)	c (2+)	Seq	x	x-H2O	x-NH3	y	y-H2O	y-NH3	x (2+)	y (2+)	#	
1	84.0414	112.0364	94.0258	95.0094	84.0414	66.0308	67.0144	129.0634	111.0528	112.0364	128.0556	56.5182	42.5207	65.0317	Q(-17.03)										6
2	120.0812	259.1048	241.0943	242.0778	231.1098	213.0992	214.0828	276.1318	258.1212	259.1048	275.1240	130.0524	116.0549	138.5659	F	619.3451	601.3345	602.3181	593.3657	575.3552	576.3387	310.1725	297.1829	5	
3	101.1078	387.2027	369.1892	370.1728	359.2048	341.1942	342.1778	404.2268	386.2162	387.2027	403.2190	194.0999	180.1024	202.6134	K	472.2767	454.2661	455.2497	446.2973	428.2867	429.2703	236.6383	223.6487	4	
4	72.0812	486.2703	468.2599	469.2412	458.2753	440.2626	441.2462	503.2952	485.2846	486.2703	502.2874	243.6341	229.6366	252.1476	V	344.1817	326.1711	327.1547	318.2023	300.1918	301.1754	172.5909	159.6012	3	
5	72.0812	585.3384	567.3260	568.3096	557.3438	539.3310	540.3146	602.3636	584.3530	585.3384	601.3557	293.1683	279.1708	301.6818	V	245.1133	227.1027	228.0863	219.1339	201.1234	202.1069	123.0566	110.0670	2	
6	74.0605														T	146.0449	128.0343	129.0179	120.0655	102.0550	103.0385	73.5224	60.5328	1	

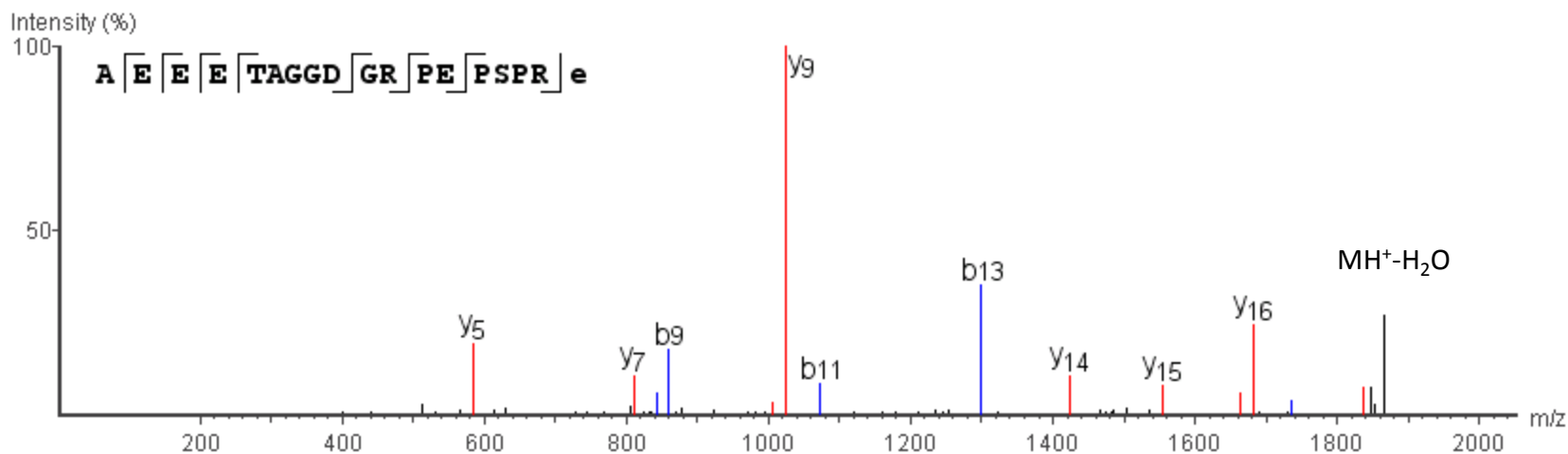


AEETAGGDGRPEPSPRE(-.98).G

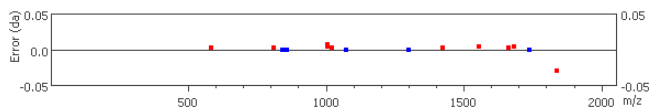
m/z=941.9301

Error=0.3ppm

Z=2



#	Immonium	b	b-H2O	b-NH3	a	a-H2O	a-NH3	c	c-H2O	c-NH3	c-H	b(2+)	a(2+)	c(2+)	Seq	x	x-H2O	x-NH3	y	y-H2O	y-NH3	x(2+)	y(2+)	#
1	44.0499	72.0449	54.0344	55.0179	44.0499	26.0394	27.0229	89.0719	71.0614	72.0449	88.0641	36.5225	22.5250	45.0360	A									18
2	102.0554	201.0875	183.0770	184.0605	173.0925	155.0820	156.0655	218.1145	200.1040	201.0875	217.1067	101.0438	87.0463	109.5573	E	1837.8295	1819.7881	1820.7717	1811.8193	1793.8088	1794.7924	919.3994	906.4097	17
3	102.0554	330.1301	312.1195	313.1031	302.1351	284.1245	285.1081	347.1571	329.1465	330.1301	346.1493	165.5650	151.5676	174.0786	E	1708.7562	1690.7456	1691.7292	1682.7711	1664.7621	1665.7499	854.8781	841.8884	16
4	102.0554	459.1727	441.1621	442.1457	431.1777	413.1671	414.1507	476.1997	458.1891	459.1727	475.1919	230.0863	216.0888	238.5998	E	1579.7136	1561.7030	1562.6866	1553.7296	1535.7238	1536.7073	790.3568	777.3671	15
5	74.0605	560.2203	542.2098	543.1934	532.2253	514.2148	515.1984	577.2474	559.2368	560.2203	576.2395	280.6102	266.6127	289.1237	T	1450.6710	1432.6604	1433.6440	1424.6871	1406.6812	1407.6647	725.8355	712.8458	14
6	44.0499	631.2574	613.2469	614.2305	603.2625	585.2519	586.2355	648.2845	630.2739	631.2574	647.2766	316.1287	302.1312	324.6422	A	1349.6233	1331.6127	1332.5963	1323.6439	1305.6334	1306.6169	675.3116	662.3220	13
7	30.0343	688.2789	670.2684	671.2520	660.2839	642.2734	643.2570	705.3060	687.2954	688.2789	704.2981	344.6395	330.6420	353.1530	G	1278.5862	1260.5756	1261.5592	1252.6068	1234.5963	1235.5798	639.7931	626.8034	12
8	30.0343	745.3004	727.2899	728.2734	717.3054	699.2949	700.2784	762.3275	744.3169	745.3004	761.3196	373.1502	359.1527	381.6637	G	1221.5647	1203.5541	1204.5377	1195.5853	1177.5748	1178.5583	611.2823	598.2927	11
9	88.0398	860.3263	842.3153	843.3004	832.3323	814.3218	815.3054	877.3544	859.3438	860.3263	876.3465	430.6637	416.6662	439.1772	D	1164.5433	1146.5327	1147.5164	1138.5640	1120.5535	1121.5370	582.7717	569.7820	10
10	30.0343	917.3488	899.3383	900.3218	889.3538	871.3433	872.3268	934.3759	916.3653	917.3488	933.3680	459.1744	445.1769	467.6879	G	1049.5164	1031.5057	1032.4894	1023.5328	1005.5211	1006.5012	525.2582	512.2685	9
11	129.1139	1073.4492	1055.4395	1056.4230	1045.4550	1027.4445	1028.4280	1090.4769	1072.4664	1073.4492	1089.4691	537.2250	523.2275	545.7385	R	992.4949	974.4843	975.4679	966.5155	948.5049	949.4885	496.7474	483.7578	8
12	70.0656	1170.5027	1152.4922	1153.4757	1142.5077	1124.4972	1125.4807	1187.5297	1169.5192	1170.5027	1186.5219	585.7513	571.7538	594.2648	P	836.3938	818.3832	819.3668	810.4104	792.4039	793.3875	418.6969	405.7072	7
13	102.0554	1299.5458	1281.5348	1282.5183	1271.5503	1253.5398	1254.5233	1316.5723	1298.5618	1299.5458	1315.5645	650.2726	636.2751	658.7861	E	739.3410	721.3304	722.3140	713.3616	695.3511	696.3347	370.1705	357.1808	6
14	70.0656	1396.5980	1378.5875	1379.5710	1368.6030	1350.5925	1351.5760	1413.6250	1395.6145	1396.5980	1412.6172	698.7990	684.8015	707.3125	P	610.2985	592.2879	593.2715	584.3151	566.3085	567.2921	305.6492	292.6595	5
15	60.0449	1483.6300	1465.6195	1466.6030	1455.6350	1437.6245	1438.6080	1500.6570	1482.6465	1483.6300	1499.6492	742.3150	728.3175	750.8285	S	513.2457	495.2351	496.2187	487.2663	469.2557	470.2393	257.1228	244.1331	4
16	70.0656	1580.6827	1562.6722	1563.6558	1552.6877	1534.6772	1535.6608	1597.7097	1579.6992	1580.6827	1596.7019	790.8414	776.8439	799.3549	P	426.2137	408.2031	409.1866	400.2343	382.2237	383.2073	213.6068	200.6171	3
17	129.1139	1736.7839	1718.7734	1719.7570	1708.7889	1690.7784	1691.7620	1753.8109	1735.8004	1736.7839	1752.8031	868.8920	854.8945	877.4055	R	329.1609	311.1503	312.1339	303.1815	285.1710	286.1545	165.0804	152.0908	2
18	101.0754														E(-.98)	173.0598	155.0492	156.0328	147.0804	129.0699	130.0534	87.0299	74.0402	1

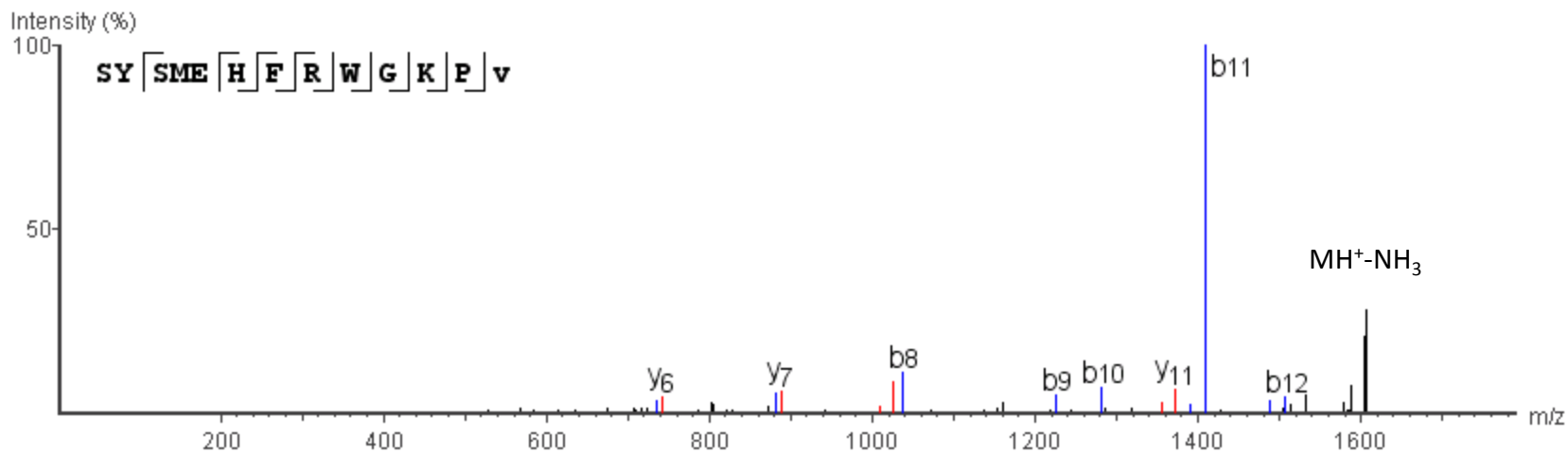


R.SYSMEHFRWGKPV(-.98).G

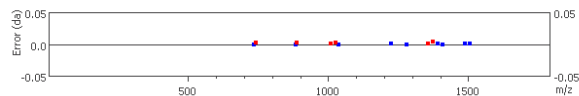
m/z=811.8967

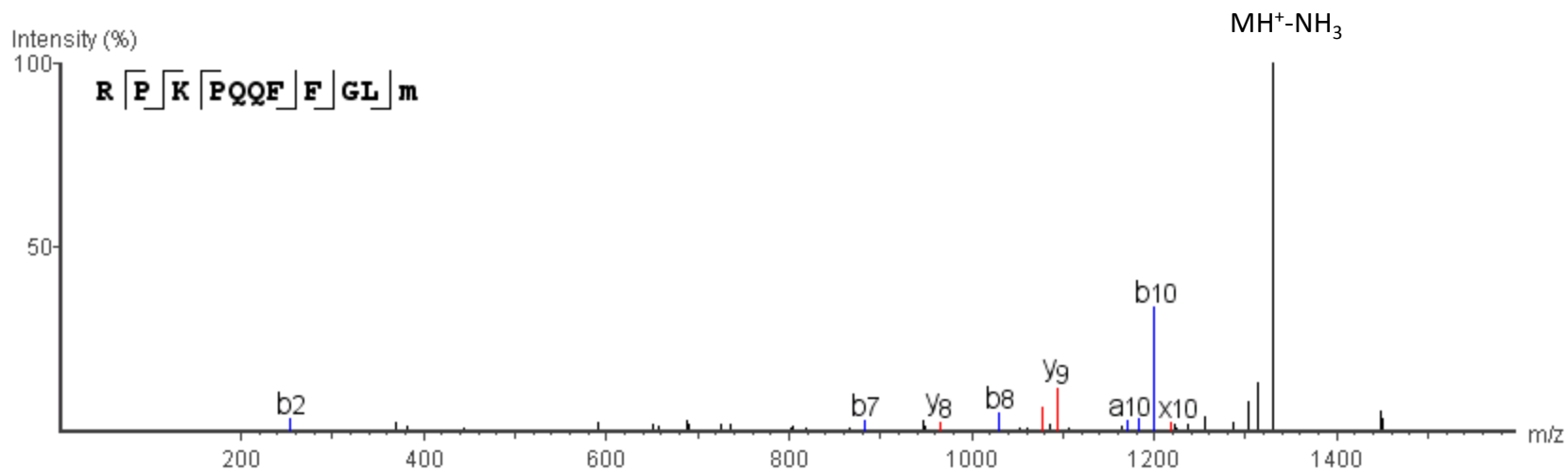
Error=-2.2ppm

Z=2

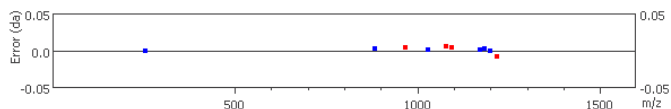


#	Immonium	b	b-H2O	b-NH3	a	a-H2O	a-NH3	c	c-H2O	c-NH3	c-H	b(2+)	a(2+)	c(2+)	Seq	x	x-H2O	x-NH3	y	y-H2O	y-NH3	x(2+)	y(2+)	#	
1	60.0449	88.0399	70.0293	71.0129	60.0449	42.0343	43.0179	105.0669	87.0563	88.0399	104.0590	44.5199	30.5224	53.0334	S										13
2	136.0761	251.1032	233.0926	234.0762	223.1082	205.0976	206.0812	268.1302	250.1196	251.1032	267.1223	126.0516	112.0541	134.5651	Y	1561.7410	1543.7303	1544.7140	1535.7616	1517.7511	1518.7346	781.3705	768.3808	12	
3	60.0449	338.1352	320.1246	321.1082	310.1402	292.1296	293.1132	355.1622	337.1516	338.1352	354.1544	169.5676	155.5701	178.0811	S	1398.6776	1380.6670	1381.6506	1372.6921	1354.6877	1355.6697	699.8388	686.8491	11	
4	104.0533	469.1757	451.1651	452.1487	441.1807	423.1701	424.1537	486.2027	468.1921	469.1757	485.1949	235.0878	221.0903	243.6013	M	1311.6456	1293.6350	1294.6187	1285.6663	1267.6558	1268.6393	656.3228	643.3331	10	
5	102.0554	598.2183	580.2077	581.1913	570.2233	552.2127	553.1963	615.2453	597.2347	598.2183	614.2374	299.6091	285.6116	308.1227	E	1180.6051	1162.5945	1163.5781	1154.6257	1136.6152	1137.5988	590.8026	577.8129	9	
6	110.0717	735.2761	717.2667	718.2502	707.2822	689.2717	690.2552	752.3043	734.2937	735.2761	751.2964	368.1386	354.1411	376.6521	H	1051.5625	1033.5519	1034.5355	1025.5793	1007.5726	1008.5544	526.2812	513.2916	8	
7	120.0812	882.3441	864.3350	865.3186	854.3506	836.3400	837.3236	899.3726	881.3621	882.3441	898.3647	441.6728	427.6753	450.1863	F	914.5036	896.4930	897.4766	888.5204	870.5137	871.4973	457.7518	444.7621	7	
8	129.1139	1038.4460	1020.4361	1021.4197	1010.4517	992.4411	993.4247	1055.4736	1037.4631	1038.4460	1054.4658	519.7233	505.7258	528.2368	R	767.4352	749.4246	750.4082	741.4512	723.4453	724.4288	384.2176	371.2279	6	
9	159.0921	1224.5243	1206.5155	1207.4990	1196.5310	1178.5205	1179.5040	1241.5530	1223.5425	1224.5243	1240.5452	612.7630	598.7655	621.2765	W	611.3341	593.3235	594.3071	585.3547	567.3442	568.3278	306.1671	293.1774	5	
10	30.0343	1281.5468	1263.5370	1264.5205	1253.5525	1235.5420	1236.5255	1298.5745	1280.5640	1281.5468	1297.5667	641.2737	627.2762	649.7872	G	425.2548	407.2442	408.2278	399.2754	381.2648	382.2484	213.1274	200.1377	4	
11	101.1078	1409.6416	1391.6304	1392.6155	1381.6475	1363.6370	1364.6205	1426.6694	1408.6589	1409.6416	1425.6616	705.3212	691.3237	713.8347	K	368.2333	350.2227	351.2063	342.2539	324.2434	325.2270	184.6167	171.6270	3	
12	70.0656	1506.6936	1488.6827	1489.6682	1478.7002	1460.6897	1461.6732	1523.7222	1505.7117	1506.6936	1522.7144	753.8476	739.8501	762.3611	P	240.1384	222.1278	223.1114	214.1590	196.1485	197.1320	120.5692	107.5795	2	
13	71.1012														W(-.98)	143.0856	125.0750	126.0586	117.1062	99.0957	100.0792	72.0428	59.0531	1	





#	Immonium	b	b-H2O	b-NH3	a	a-H2O	a-NH3	c	c-H2O	c-NH3	c-H	b (2+)	a (2+)	c (2+)	Seq	x	x-H2O	x-NH3	y	y-H2O	y-NH3	x (2+)	y (2+)	#	
1	129.1139	157.1089	139.0984	140.0819	129.1139	111.1034	112.0869	174.1359	156.1254	157.1089	173.1281	79.0545	65.0570	87.5680	R										11
2	70.0656	254.1611	236.1511	237.1347	226.1667	208.1561	209.1397	271.1887	253.1781	254.1611	270.1809	127.5808	113.5833	136.0943	P	1217.6255	1199.6071	1200.5907	1191.6383	1173.6278	1174.6113	609.3088	596.3192	10	
3	101.1078	382.2566	364.2461	365.2296	354.2616	336.2511	337.2346	399.2836	381.2731	382.2566	398.2758	191.6283	177.6308	200.1418	K	1120.5649	1102.5543	1103.5380	1094.5795	1076.5751	1077.5520	560.7825	547.7928	9	
4	70.0656	479.3094	461.2988	462.2824	451.3144	433.3038	434.2874	496.3364	478.3258	479.3094	495.3286	240.1547	226.1572	248.6682	P	992.4700	974.4594	975.4430	966.4857	948.4800	949.4636	496.7350	483.7453	8	
5	101.0714	607.3680	589.3574	590.3410	579.3730	561.3624	562.3460	624.3950	606.3845	607.3680	623.3871	304.1840	290.1865	312.6975	Q	895.4172	877.4066	878.3901	869.4378	851.4272	852.4108	448.2086	435.2189	7	
6	101.0714	735.4265	717.4160	718.3995	707.4315	689.4210	690.4045	752.4536	734.4430	735.4265	751.4457	368.2133	354.2158	376.7268	Q	767.3586	749.3480	750.3315	741.3792	723.3687	724.3522	384.1793	371.1896	6	
7	120.0812	882.4916	864.4844	865.4680	854.4999	836.4894	837.4730	899.5220	881.5114	882.4916	898.5141	441.7475	427.7500	450.2610	F	639.3000	621.2895	622.2731	613.3207	595.3101	596.2937	320.1500	307.1603	5	
8	120.0812	1029.5608	1011.5528	1012.5364	1001.5684	983.5578	984.5414	1046.5903	1028.5798	1029.5608	1045.5825	515.2817	501.2842	523.7952	F	492.2316	474.2211	475.2046	466.2523	448.2417	449.2253	246.6158	233.6261	4	
9	30.0343	1086.5848	1068.5743	1069.5579	1058.5898	1040.5793	1041.5629	1103.6118	1085.6013	1086.5848	1102.6040	543.7924	529.7949	552.3059	G	345.1632	327.1526	328.1362	319.1838	301.1733	302.1569	173.0816	160.0919	3	
10	86.0969	1199.6685	1181.6583	1182.6373	1171.6722	1153.6633	1154.6469	1216.6958	1198.6853	1199.6685	1215.6880	600.3344	586.3369	608.8479	L	288.1418	270.1312	271.1147	262.1624	244.1518	245.1354	144.5709	131.5812	2	
11	103.0733														M(-.98)	175.0577	157.0471	158.0307	149.0783	131.0678	132.0513	88.0288	75.0392	1	

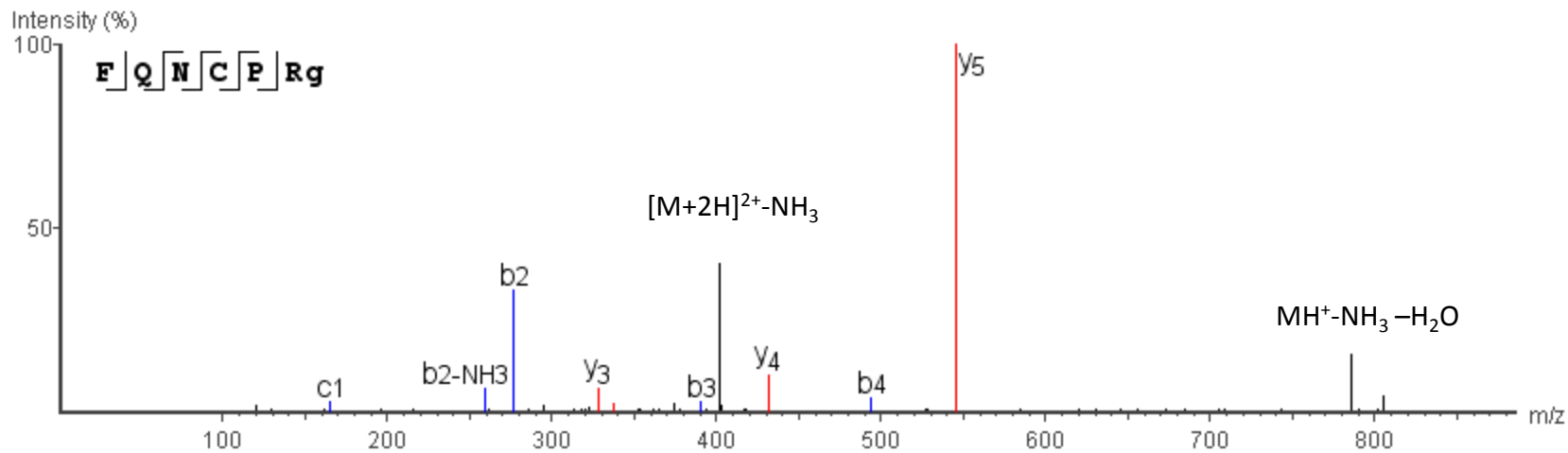


Y.FQNCPRG(-.98).G

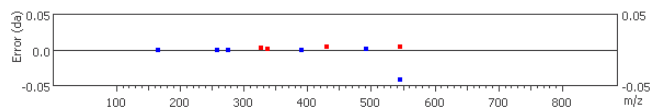
m/z=410.6979

Error=0.4ppm

Z=2



#	Immonium	b	b-H2O	b-NH3	a	a-H2O	a-NH3	c	c-H2O	c-NH3	c-H	b (2+)	a (2+)	c (2+)	Seq	x	x-H2O	x-NH3	y	y-H2O	y-NH3	x (2+)	y (2+)	#	
1	120.0812	148.0762	130.0657	131.0492	120.0812	102.0707	103.0542	165.1019	147.0927	148.0762	164.0954	74.5381	60.5406	83.0516	F										7
2	101.0714	276.1343	258.1242	259.1075	248.1398	230.1292	231.1128	293.1618	275.1512	276.1343	292.1540	138.5674	124.5699	147.0809	Q	699.3032	681.2927	682.2762	673.3239	655.3133	656.2969	350.1516	337.1619	6	
3	87.0558	390.1763	372.1672	373.1508	362.1827	344.1722	345.1558	407.2047	389.1942	390.1763	406.1969	195.5889	181.5914	204.1024	N	571.2446	553.2341	554.2177	545.2601	527.2547	528.2383	286.1223	273.1326	5	
4	76.0220	493.1846	475.1764	476.1599	465.1919	447.1814	448.1649	510.2139	492.2034	493.1846	509.2061	247.0935	233.0960	255.6070	C	457.2017	439.1912	440.1747	431.2173	413.2118	414.1954	229.1009	216.1112	4	
5	70.0656	590.2397	572.2291	573.2127	562.2447	544.2341	545.2601	607.2667	589.2562	590.2397	606.2589	295.6198	281.6223	304.1334	P	354.1925	336.1819	337.1631	328.2087	310.2026	311.1862	177.5963	164.6066	3	
6	129.1139	746.3408	728.3302	729.3138	718.3458	700.3352	701.3188	763.3678	745.3572	746.3408	762.3599	373.6704	359.6729	382.1839	R	257.1397	239.1292	240.1127	231.1604	213.1498	214.1334	129.0699	116.0802	2	
7	29.0543														G(-.98)	101.0387	83.0281	84.0116	75.0593	57.0487	58.0323	51.0193	38.0296	1	

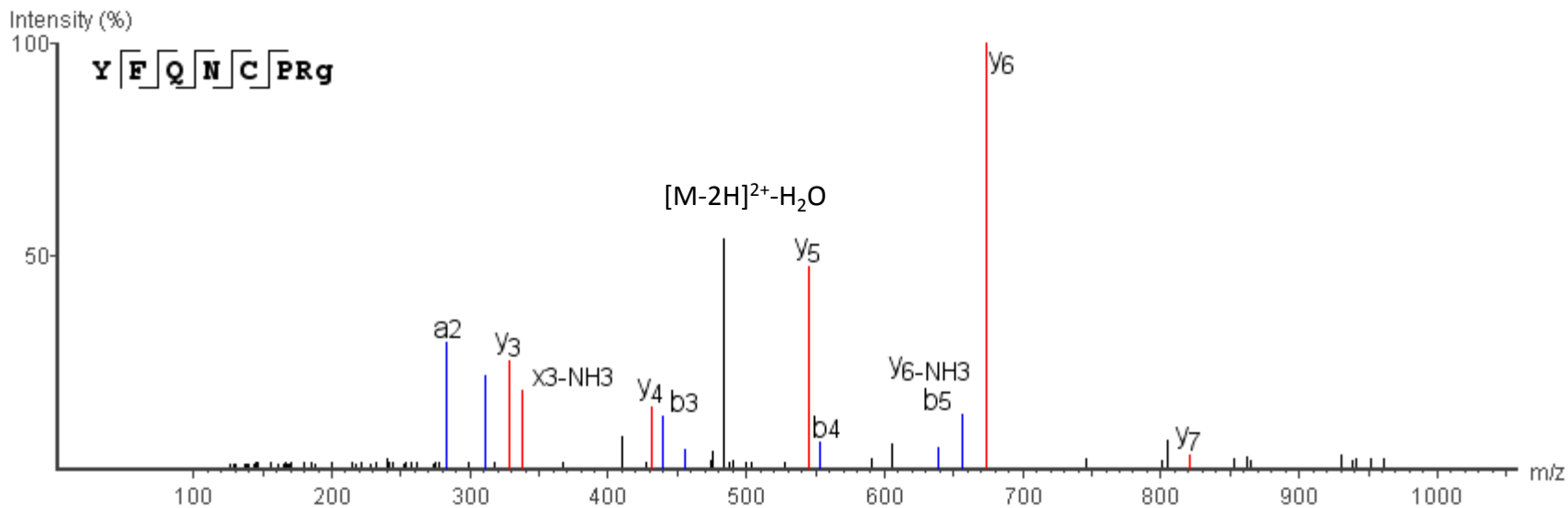


C.YFQNCPRG(-.98).G

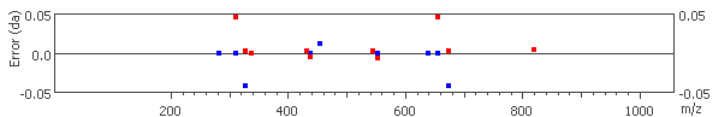
m/z=492.2295

Error=0.1ppm

Z=2

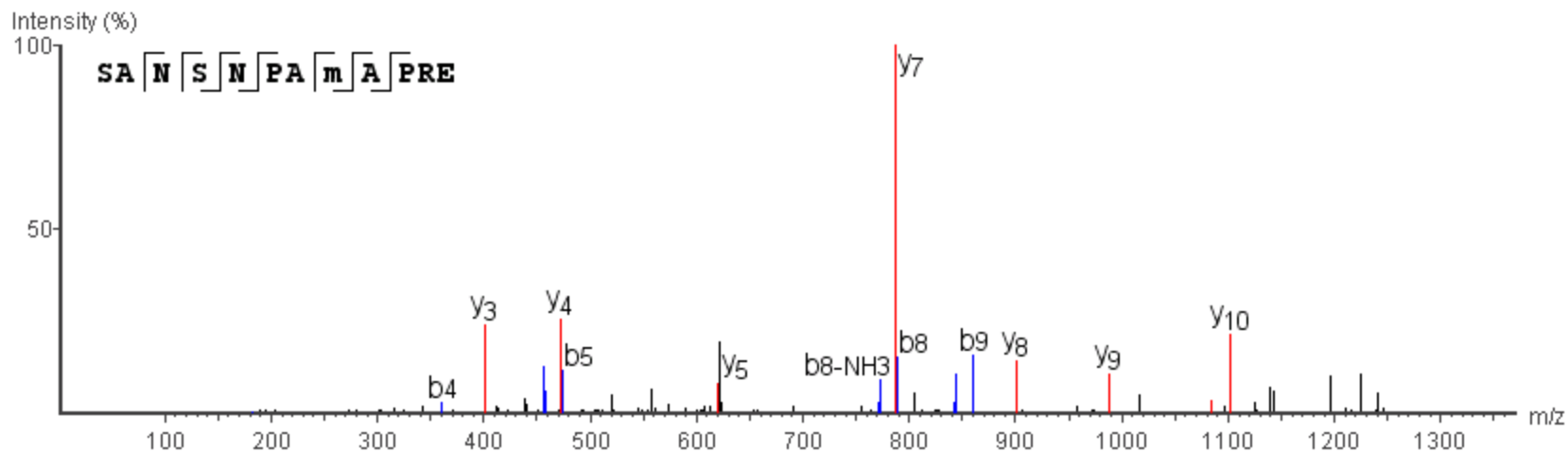


#	Immonium	b	b-H2O	b-NH3	a	a-H2O	a-NH3	c	c-H2O	c-NH3	c-H	b (2+)	a (2+)	c (2+)	Seq	x	x-H2O	x-NH3	y	y-H2O	y-NH3	x (2+)	y (2+)	#	
1	136.0761	164.0712	146.0606	147.0441	136.0761	118.0656	119.0491	181.0981	163.0876	164.0712	180.0903	82.5356	68.5381	91.0491	Y										8
2	120.0812	<u>311.1393</u>	293.1290	294.1125	<u>283.1443</u>	265.1340	266.1176	<u>328.2094</u>	310.1560	<u>311.1393</u>	327.1587	156.0698	142.0723	164.5833	F	846.3716	828.3611	829.3446	<u>820.3871</u>	802.3817	803.3653	423.6858	410.6961	7	
3	101.0714	<u>439.1972</u>	421.1876	422.1711	411.2031	393.1926	394.1761	456.2251	438.2146	<u>439.1972</u>	<u>455.2042</u>	220.0991	206.1016	228.6126	Q	699.3032	681.2927	682.2762	<u>673.3196</u>	655.3133	<u>656.2493</u>	350.1516	337.1619	6	
4	87.0558	<u>553.2412</u>	535.2305	536.2141	525.2460	507.2355	508.2191	570.2681	552.2575	<u>553.2412</u>	569.2602	277.1205	263.1230	285.6340	N	571.2446	<u>553.2412</u>	554.2177	<u>545.2611</u>	527.2547	528.2383	286.1223	273.1326	5	
5	76.0220	<u>656.2493</u>	638.2397	<u>639.2236</u>	628.2552	610.2447	611.2283	<u>673.3196</u>	655.2667	<u>656.2493</u>	672.2694	328.6251	314.6276	337.1386	C	457.2017	<u>439.1972</u>	440.1747	<u>431.2186</u>	413.2118	414.1954	229.1009	216.1112	4	
6	70.0656	753.3030	735.2924	736.2760	725.3080	707.2974	708.2810	770.3300	752.3195	753.3030	769.3221	377.1515	363.1540	385.6650	P	354.1925	336.1819	<u>337.1640</u>	<u>328.2094</u>	310.2026	<u>311.1393</u>	177.5963	164.6066	3	
7	129.1139	909.4041	891.3936	892.3771	881.4091	863.3986	864.3821	926.4312	908.4206	909.4041	925.4233	455.2021	441.2046	463.7156	R	257.1397	239.1292	240.1127	231.1604	213.1498	214.1334	129.0699	116.0802	2	
8	29.0543														G(-.98)	101.0387	83.0281	84.0116	75.0593	57.0487	58.0323	51.0193	38.0296	1	



R.SANSNPAM(+15.99)APRE.R

Z=2



#	Immonium	b	b-H2O	b-NH3	a	a-H2O	a-NH3	c	c-H2O	c-NH3	c-H	b (2+)	a (2+)	c (2+)	Seq	x	x-H2O	x-NH3	y	y-H2O	y-NH3	x (2+)	y (2+)	#		
1	60.0449	88.0399	70.0293	71.0129	60.0449	42.0343	43.0179	105.0669	87.0563	88.0399	104.0590	44.5199	30.5224	53.0334	S											12
2	44.0499	159.0770	141.0664	142.0500	131.0820	113.0714	114.0550	176.1040	158.0934	159.0770	175.0961	80.0385	66.0410	88.5520	A	1199.5061	1181.4955	1182.4791	1173.5267	1155.5162	1156.4998	600.2531	587.2634	11		
3	87.0558	273.1199	255.1093	256.0929	245.1249	227.1143	228.0979	290.1469	272.1363	273.1199	289.1391	137.0599	123.0624	145.5734	N	1128.4690	1110.4584	1111.4420	1102.4929	1084.4801	1085.4626	564.7345	551.7448	10		
4	60.0449	360.1515	342.1414	343.1249	332.1569	314.1464	315.1299	377.1789	359.1684	360.1515	376.1711	180.5760	166.5785	189.0895	S	1014.4261	996.4155	997.3990	988.4513	970.4362	971.4197	507.7130	494.7234	9		
5	87.0558	474.1936	456.1833	457.1675	446.1998	428.1893	429.1729	491.2218	473.2113	474.1936	490.2140	237.5974	223.5999	246.1109	N	927.3940	909.3835	910.3671	901.4189	883.4041	884.3877	464.1970	451.2073	8		
6	70.0656	571.2476	553.2371	554.2206	543.2526	525.2421	526.2256	588.2747	570.2641	571.2476	587.2668	286.1238	272.1263	294.6373	P	813.3511	795.3406	796.3241	787.3758	769.3612	770.3448	407.1756	394.1859	7		
7	44.0499	642.2847	624.2742	625.2578	614.2897	596.2792	597.2628	659.3118	641.3012	642.2847	658.3039	321.6424	307.6449	330.1559	A	716.2983	698.2878	699.2714	690.3190	672.3084	673.2920	358.6492	345.6595	6		
8	120.0433	789.3196	771.3096	772.2910	761.3202	743.3096	744.2932	806.3422	788.3317	789.3196	805.3344	395.1576	381.1601	403.6711	M(+15.99)	645.2612	627.2507	628.2343	619.2867	601.2713	602.2549	323.1306	310.1409	5		
9	44.0499	860.3558	842.3458	843.3288	832.3573	814.3467	815.3303	877.3793	859.3688	860.3558	876.3715	430.6761	416.6786	439.1897	A	498.2307	480.2202	481.2037	472.2512	454.2408	455.2244	249.6154	236.6257	4		
10	70.0656	957.4051	939.3945	940.3781	929.4101	911.3995	912.3831	974.4321	956.4216	957.4051	973.4243	479.2025	465.2050	487.7161	P	427.1936	409.1831	410.1666	401.2145	383.2037	384.1873	214.0968	201.1071	3		
11	129.1139	1113.5062	1095.4957	1096.4792	1085.5112	1067.5007	1068.4843	1130.5332	1112.5227	1113.5062	1129.5254	557.2531	543.2556	565.7666	R	330.1409	312.1303	313.1139	304.1615	286.1509	287.1345	165.5704	152.5807	2		
12	102.0554														E	174.0398	156.0292	157.0128	148.0604	130.0499	131.0334	87.5199	74.5302	1		

