

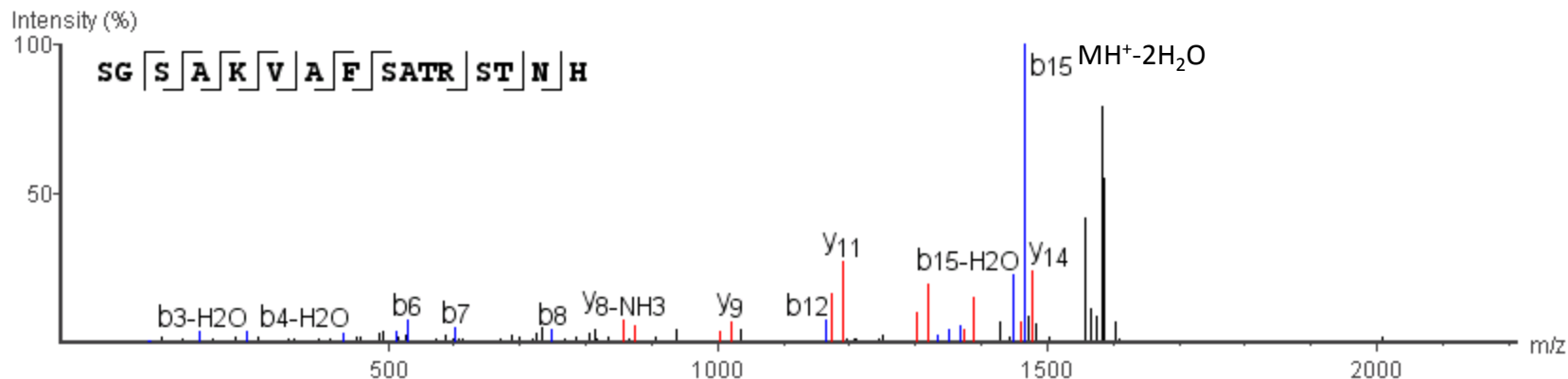
(3) Sequence assignments of peptides solely identified from their precursors

R.SGSAKVAFSATRSTNH.E

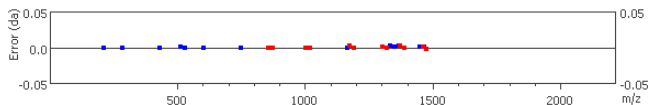
m/z=540.9408

Error=-0.6ppm

Z=3



#	Immonium	b	b-H2O	b-NH3	a	a-H2O	a-NH3	c	c-H2O	c-NH3	c-H	b(2+)	a(2+)	c(2+)	Seq	x	x-H2O	x-NH3	y	y-H2O	y-NH3	x(2+)	y(2+)	#
1	60.0449	88.0399	70.0293	71.0129	60.0449	42.0343	43.0179	105.0669	87.0563	88.0399	104.0590	44.5199	30.5224	53.0334	S									16
2	30.0343	145.0613	127.0508	128.0343	117.0663	99.0558	100.0393	162.0883	144.0778	145.0613	161.0805	73.0307	59.0332	81.5442	G	1559.7561	1541.7455	1542.7291	1533.7767	1515.7662	1516.7498	780.3781	767.3884	15
3	60.0449	232.0933	214.0822	215.0663	204.0983	186.0878	187.0713	249.1203	231.1098	232.0933	248.1125	116.5467	102.5492	125.0602	S	1502.7347	1484.7241	1485.7078	1476.7574	1458.7449	1459.7255	751.8674	738.8777	14
4	44.0499	303.1304	285.1201	286.1035	275.1354	257.1249	258.1085	320.1574	302.1469	303.1304	319.1496	152.0652	138.0677	160.5787	A	1415.7026	1397.6920	1398.6757	1389.7229	1371.7128	1372.6930	708.3513	695.3616	13
5	101.1078	431.2251	413.2148	414.1984	403.2304	385.2198	386.2034	448.2524	430.2419	431.2251	447.2446	216.1127	202.1152	224.6262	K	1344.6655	1326.6549	1327.6385	1318.6853	1300.6757	1301.6572	672.8328	659.8431	12
6	72.0812	530.2933	512.2812	513.2668	502.2988	484.2883	485.2719	547.3209	529.3103	530.2933	546.3130	265.6469	251.6494	274.1604	V	1216.5706	1198.5599	1199.5436	1190.5897	1172.5807	1173.5697	608.7853	595.7956	11
7	44.0499	601.3301	583.3204	584.3040	573.3359	555.3254	556.3090	618.3580	600.3474	601.3301	617.3501	301.1655	287.1680	309.6790	A	1117.5022	1099.4916	1100.4752	1091.5228	1073.5123	1074.4958	559.2511	546.2614	10
8	120.0812	748.3979	730.3887	731.3723	720.4043	702.3937	703.3773	765.4263	747.4158	748.3979	764.4185	374.6996	360.7021	383.2132	F	1046.4651	1028.4545	1029.4381	1020.4847	1002.4752	1003.4597	523.7325	510.7429	9
9	60.0449	835.4313	817.4208	818.4044	807.4363	789.4258	790.4094	852.4584	834.4478	835.4313	851.4505	418.2157	404.2182	426.7292	S	899.3967	881.3861	882.3696	873.4165	855.4067	856.3889	450.1983	437.2086	8
10	44.0499	906.4684	888.4579	889.4415	878.4734	860.4629	861.4465	923.4955	905.4849	906.4684	922.4876	453.7342	439.7367	462.2477	A	812.3646	794.3541	795.3376	786.3853	768.3747	769.3583	406.6823	393.6926	7
11	74.0605	1007.5161	989.5056	990.4891	979.5211	961.5106	962.4941	1024.5431	1006.5326	1007.5161	1023.5353	504.2581	490.2606	512.7715	T	741.3275	723.3170	724.3005	715.3481	697.3376	698.3212	371.1638	358.1741	6
12	129.1139	1163.6173	1145.6067	1146.5902	1135.6222	1117.6117	1118.5952	1180.6442	1162.6337	1163.6173	1179.6364	582.3086	568.3111	590.8221	R	640.2798	622.2693	623.2528	614.3005	596.2899	597.2735	320.6399	307.6502	5
13	60.0449	1250.6493	1232.6388	1233.6223	1222.6543	1204.6438	1205.6273	1267.6763	1249.6658	1250.6493	1266.6685	625.8246	611.8271	634.3381	S	484.1787	466.1682	467.1517	458.1994	440.1888	441.1724	242.5894	229.5997	4
14	74.0605	1351.6941	1333.6824	1334.6700	1323.7020	1305.6915	1306.6750	1368.7205	1350.7135	1351.6941	1367.7162	676.3485	662.3510	684.8620	T	397.1467	379.1362	380.1197	371.1674	353.1568	354.1404	199.0734	186.0837	3
15	87.0558	1465.7369	1447.7273	1448.7129	1437.7449	1419.7344	1420.7179	1482.7668	1464.7563	1465.7369	1481.7590	733.3699	719.3724	741.8834	N	296.0990	278.0885	279.0720	270.1197	252.1091	253.0927	148.5495	135.5598	2
16	110.0717														H	182.0561	164.0455	165.0291	156.0768	138.0662	139.0497	91.5280	78.5384	1

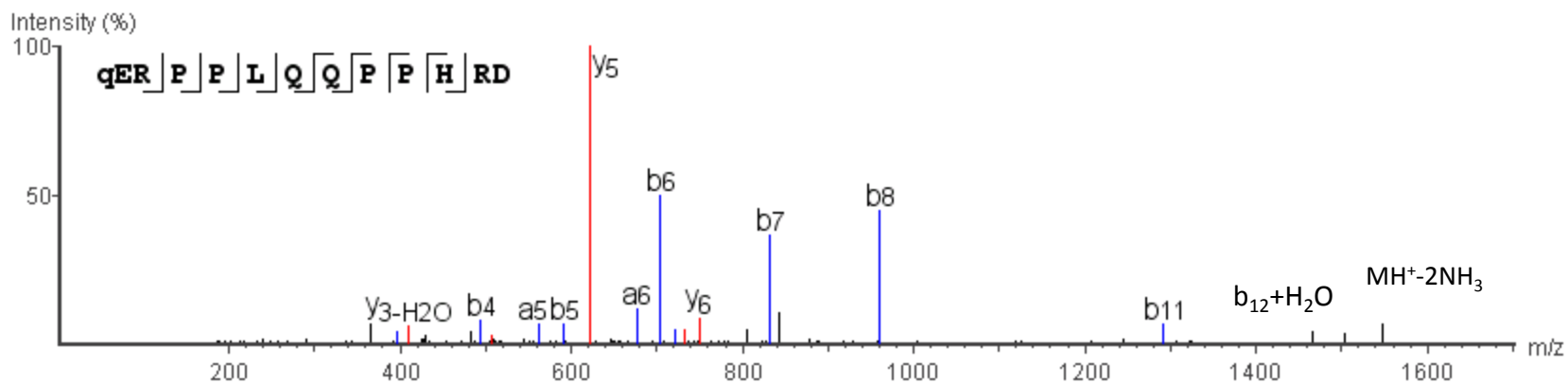


R.Q(-17.03)ERPPLQQPPHRD.K

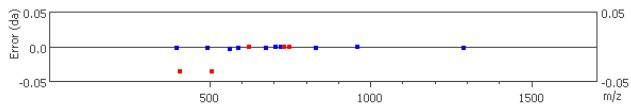
m/z=527.6022

Error=-0.3ppm

Z=3



#	Immonium	b	b-H2O	b-NH3	a	a-H2O	a-NH3	c	c-H2O	c-NH3	c-H	b (2+)	a (2+)	c (2+)	Seq	x	x-H2O	x-NH3	y	y-H2O	y-NH3	x (2+)	y (2+)	#	
1	84.0414	112.0364	94.0258	95.0094	84.0414	66.0308	67.0144	129.0634	111.0528	112.0364	128.0556	56.5182	42.5207	65.0317	Q(-17.03)										13
2	102.0554	241.0790	223.0684	224.0520	213.0840	195.0734	196.0570	258.1060	240.0954	241.0790	257.0982	121.0395	107.0420	129.5530	E	1495.7401	1477.7295	1478.7131	1469.7607	1451.7502	1452.7338	748.3701	735.3804	12	
3	129.1139	397.1828	379.1695	380.1531	369.1851	351.1745	352.1581	414.2071	396.1965	397.1828	413.1993	199.0900	185.0925	207.6035	R	1366.6975	1348.6869	1349.6705	1340.7181	1322.7076	1323.6912	683.8488	670.8591	11	
4	70.0656	494.2347	476.2223	477.2059	466.2379	448.2273	449.2109	511.2599	493.2493	494.2347	510.2520	247.6164	233.6189	256.1299	P	1210.5964	1192.5858	1193.5695	1184.6171	1166.6066	1167.5901	605.7982	592.8085	10	
5	70.0656	591.2878	573.2750	574.2586	563.2946	545.2800	546.2636	608.3126	590.3021	591.2878	607.3047	296.1428	282.1453	304.6563	P	1113.5436	1095.5330	1096.5166	1087.5642	1069.5537	1070.5372	557.2718	544.2821	9	
6	86.0969	704.3711	686.3591	687.3427	676.3767	658.3641	659.3477	721.3976	703.3861	704.3711	720.3888	352.6848	338.6873	361.1983	L	1016.4909	998.4803	999.4639	990.5115	972.5010	973.4846	508.7455	495.7558	8	
7	101.0714	832.4302	814.4177	815.4012	804.4332	786.4227	787.4062	849.4553	831.4447	832.4302	848.4474	416.7141	402.7166	425.2276	Q	903.4068	885.3962	886.3798	877.4274	859.4169	860.4005	452.2034	439.2137	7	
8	101.0714	960.4878	942.4763	943.4598	932.4918	914.4813	915.4648	977.5139	959.5033	960.4878	976.5060	480.7434	466.7459	489.2569	Q	775.3483	757.3377	758.3213	749.3682	731.3583	732.3407	388.1741	375.1844	6	
9	70.0656	1057.5396	1039.5291	1040.5126	1029.5446	1011.5340	1012.5176	1074.5665	1056.5560	1057.5396	1073.5587	529.2698	515.2723	537.7833	P	647.2897	629.2791	630.2627	621.3092	603.2997	604.2833	324.1448	311.1552	5	
10	70.0656	1154.5923	1136.5818	1137.5653	1126.5973	1108.5868	1109.5703	1171.6193	1153.6088	1154.5923	1170.6115	577.7961	563.7986	586.3096	P	550.2369	532.2263	533.2099	524.2576	506.2825	507.2306	275.6184	262.6288	4	
11	110.0717	1291.6530	1273.6407	1274.6243	1263.6562	1245.6458	1246.6293	1308.6782	1290.6677	1291.6530	1307.6704	646.3256	632.3281	654.8391	H	453.1841	435.1736	436.1571	427.2048	409.2301	410.1778	227.0921	214.1024	3	
12	129.1139	1447.7523	1429.7418	1430.7253	1419.7573	1401.7468	1402.7303	1464.7793	1446.7688	1447.7523	1463.7715	724.3762	710.3787	732.8896	R	316.1252	298.1147	299.0982	290.1459	272.1353	273.1189	158.5626	145.5729	2	
13	88.0398														D	160.0241	142.0136	142.9971	134.0448	116.0342	117.0178	80.5121	67.5224	1	

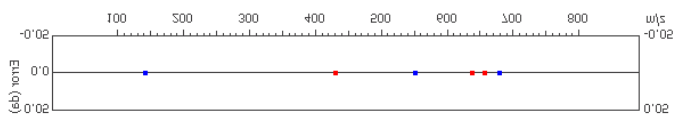
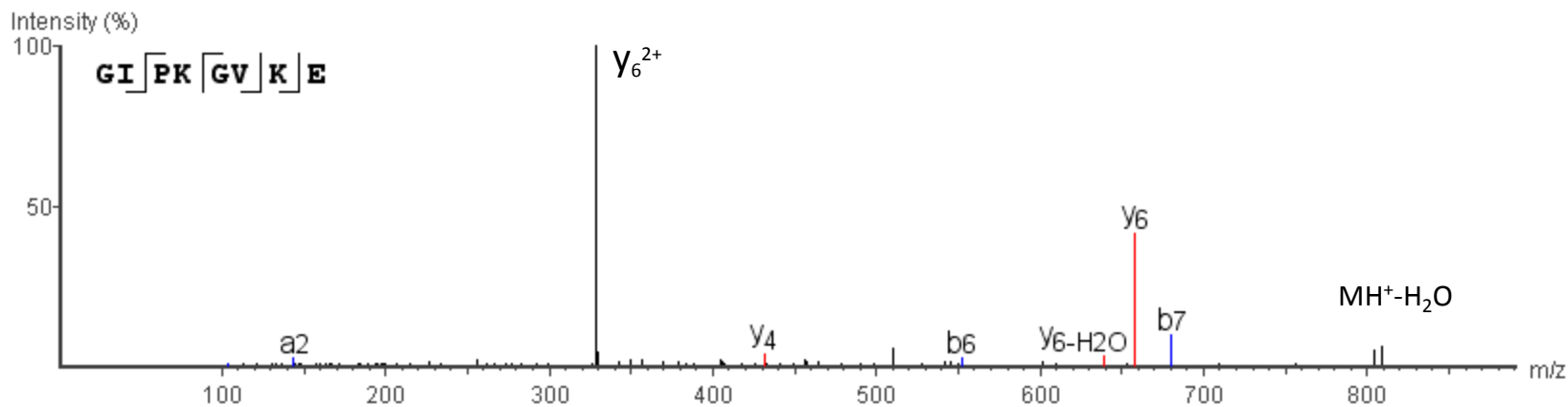


R.GIPKGVKE.R

m/z=414.2538

Error=2.4ppm

Z=2



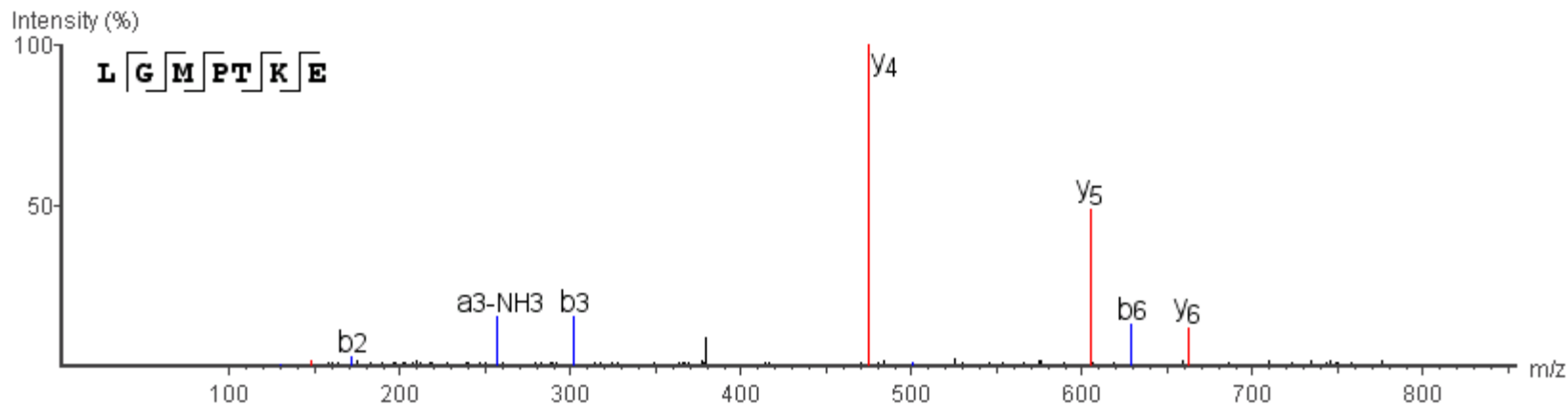
8	105'0224														E	134'0388	126'0585	123'0158	148'0804	130'0488	131'0334	83'2188	34'2305	1
Δ	101'1038	880'4442	885'4383	883'4188	825'4208	834'4403	832'4538	881'4158	838'4653	880'4442	898'4820	340'3558	358'3524	348'3382	K	305'1343	384'1545	382'1033	338'1824	328'1448	328'1584	121'2634	138'2333	5
ρ	Δ5'0815	225'3488	234'3404	232'3540	254'3280	208'3424	203'3580	288'3380	221'3634	225'3488	288'3301	338'4322	385'4380	382'1880	A	401'5035	383'1858	384'1381	332'5538	323'5135	328'1888	501'1018	188'1118	3
2	30'0343	423'5852	432'5318	438'5222	452'5832	403'5388	408'5802	430'3082	425'5880	423'5852	488'3013	553'1413	513'1438	532'8248	c	428'5548	440'5141	441'1838	435'5448	414'5343	412'5183	558'8153	518'8558	4
4	101'1038	388'5810	338'5202	338'5341	388'5881	320'5222	321'5381	413'5881	382'5332	388'5810	415'5805	188'8302	184'8330	503'1440	K	288'3188	288'3080	288'5858	280'3405	245'3583	243'3135	583'8288	580'8301	2
3	Δ0'0828	588'1881	520'1222	521'1381	540'1311	555'1802	553'1441	582'1831	583'1852	588'1881	584'1823	134'2830	150'2822	143'0822	b	883'3353	882'3818	888'3423	823'3852	838'3855	840'3880	345'1885	358'1882	8
5	88'0888	131'1134	123'1058	124'0883	143'1138	152'1038	158'0814	188'1404	130'1588	131'1134	183'1352	88'0883	Δ5'0885	84'2305	I	388'4284	338'4428	338'4583	330'4330	Δ25'4884	Δ23'4200	388'3585	382'3382	Δ
1	30'0343	28'0583	40'0183	41'0053	30'0343	15'0533	13'0033	Δ2'0283	23'0423	28'0583	Δ4'0882	58'2148	12'2131	38'0581	e									8
#	μμμμμμμμ	p	p-HSO	p-VH3	g	g-HSO	g-VH3	c	c-HSO	c-VH3	c-H	p(S+)	g(S+)	c(S+)	2ed	x	x-HSO	x-VH3	λ	λ-HSO	λ-VH3	x(S+)	λ(S+)	#

G.LGMPTKE

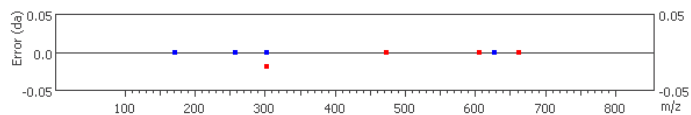
m/z=388.2044

Error=-0.4ppm

Z=2



#	Immonium	b	b-H2O	b-NH3	a	a-H2O	a-NH3	c	c-H2O	c-NH3	c-H	b (2+)	a (2+)	c (2+)	Seq	x	x-H2O	x-NH3	y	y-H2O	y-NH3	x (2+)	y (2+)	#	
1	86.0969	114.0919	96.0813	97.0649	86.0969	68.0863	69.0699	131.1189	113.1083	114.0919	130.1111	57.5459	43.5484	66.0594	L										7
2	30.0343	171.1127	153.1028	154.0863	143.1183	125.1078	126.0914	188.1404	170.1298	171.1127	187.1325	86.0567	72.0592	94.5702	G	688.2971	670.2866	671.2701	662.3174	644.3072	645.2908	344.6486	331.6589	6	
3	104.0533	302.1534	284.1433	285.1269	274.1588	256.1483	257.1319	319.1808	301.1703	302.1534	318.1730	151.5769	137.5794	160.0904	M	631.2757	613.2651	614.2487	605.2963	587.2858	588.2693	316.1378	303.1482	5	
4	70.0656	399.2066	381.1960	382.1796	371.2116	353.2010	354.1846	416.2336	398.2231	399.2066	415.2258	200.1033	186.1058	208.6168	P	500.2352	482.2246	483.2082	474.2553	456.2452	457.2288	250.6176	237.6279	4	
5	74.0605	500.2543	482.2437	483.2273	472.2593	454.2487	455.2323	517.2813	499.2707	500.2543	516.2734	250.6271	236.6296	259.1407	T	403.1824	385.1719	386.1554	377.2031	359.1925	360.1761	202.0912	189.1015	3	
6	101.1078	628.3492	610.3387	611.3223	600.3542	582.3437	583.3273	645.3763	627.3657	628.3492	644.3684	314.6746	300.6771	323.1881	K	302.1534	284.1242	285.1077	276.1554	258.1448	259.1284	151.5674	138.5777	2	
7	102.0554														E	174.0398	156.0292	157.0128	148.0604	130.0499	131.0334	87.5199	74.5302	1	

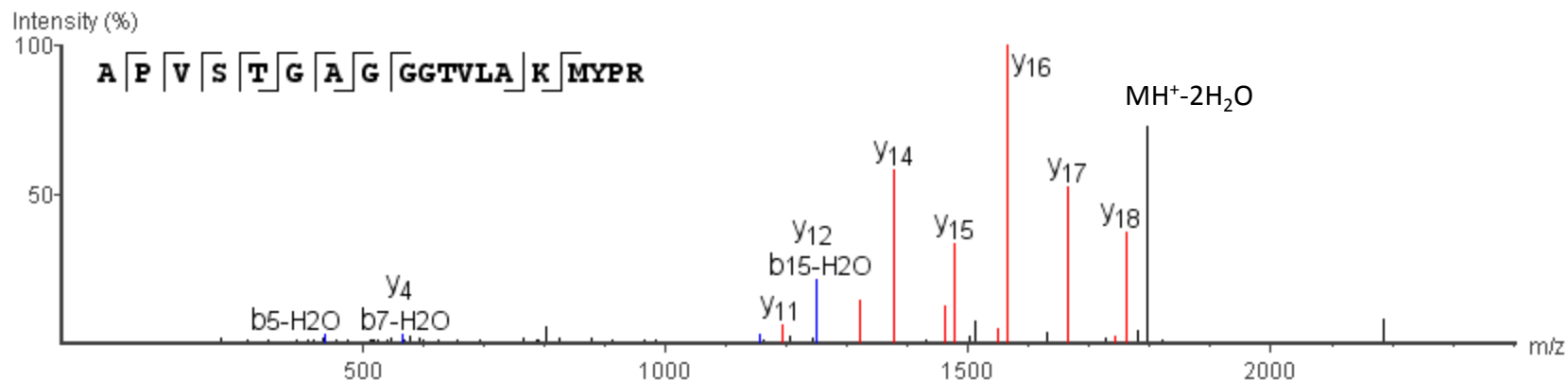


A.APVSTGAGGGTVLAKMYPR.G

m/z=611.6641

Error=4.9ppm

Z=3



#	Immonium	b	b-H2O	b-NH3	a	a-H2O	a-NH3	c	c-H2O	c-NH3	c-H	b(2+)	a(2+)	c(2+)	Seq	x	x-H2O	x-NH3	y	y-H2O	y-NH3	x(2+)	y(2+)	#	
1	44.0499	72.0449	54.0344	55.0179	44.0499	26.0394	27.0229	89.0719	71.0614	72.0449	88.0641	36.5225	22.5250	45.0360	A										19
2	70.0656	169.0977	151.0871	152.0707	141.1027	123.0921	124.0757	186.1247	168.1141	169.0977	185.1169	85.0489	71.0513	93.5623	P	1787.9109	1769.9003	1770.8839	1761.9351	1743.9282	1744.9045	894.4554	881.4658	18	
3	72.0812	268.1661	250.1555	251.1391	240.1711	222.1605	223.1441	285.1931	267.1825	268.1661	284.1853	134.5830	120.5855	143.0965	V	1690.8582	1672.8475	1673.8312	1664.8813	1646.8683	1647.8518	845.9291	832.9394	17	
4	60.0449	355.1981	337.1876	338.1711	327.2031	309.1926	310.1761	372.2251	354.2146	355.1981	371.2173	178.0991	164.1016	186.6126	S	1591.7898	1573.7792	1574.7628	1565.8130	1547.8062	1548.7834	796.3949	783.4052	16	
5	74.0605	456.2458	438.2349	439.2188	428.2508	410.2402	411.2238	473.2728	455.2622	456.2458	472.2650	228.6229	214.6254	237.1364	T	1504.7577	1486.7471	1487.7307	1478.7804	1460.7694	1461.7513	752.8788	739.8892	15	
6	30.0343	513.2673	495.2567	496.2403	485.2723	467.2617	468.2453	530.2943	512.2838	513.2673	529.2864	257.1336	243.1361	265.6472	G	1403.7101	1385.6995	1386.6831	1377.7330	1359.7202	1360.7037	702.3550	689.3654	14	
7	44.0499	584.3044	566.2789	567.2774	556.3094	538.2988	539.2824	601.3314	583.3209	584.3044	600.3235	292.6522	278.6547	301.1657	A	1346.6886	1328.6780	1329.6616	1320.7119	1302.6987	1303.6823	673.8443	660.8546	13	
8	30.0343	641.3258	623.3152	624.2988	613.3308	595.3203	596.3038	658.3528	640.3423	641.3258	657.3450	321.1629	307.1654	329.6764	G	1275.6515	1257.6409	1258.6245	1249.6742	1231.6616	1232.6451	638.3257	625.3361	12	
9	30.0343	698.3473	680.3367	681.3203	670.3523	652.3417	653.3253	715.3743	697.3638	698.3473	714.3665	349.6736	335.6761	358.1872	G	1218.6300	1200.6194	1201.6030	1192.6521	1174.6401	1175.6237	609.8150	596.8253	11	
10	30.0343	755.3688	737.3582	738.3418	727.3738	709.3632	710.3468	772.3958	754.3853	755.3688	771.3879	378.1844	364.1869	386.6979	G	1161.6085	1143.5979	1144.5815	1135.6292	1117.6187	1118.6022	581.3043	568.3146	10	
11	74.0605	856.4164	838.4059	839.3895	828.4214	810.4109	811.3945	873.4435	855.4329	856.4164	872.4356	428.7082	414.7107	437.2217	T	1104.5870	1086.5764	1087.5601	1078.6077	1060.5972	1061.5807	552.7935	539.8038	9	
12	72.0812	955.4849	937.4743	938.4579	927.4899	909.4793	910.4629	972.5119	954.5013	955.4849	971.5040	478.2424	464.2449	486.7560	V	1003.5394	985.5289	986.5125	977.5601	959.5495	960.5331	502.2697	489.2800	8	
13	86.0969	1068.5690	1050.5585	1051.5420	1040.5740	1022.5634	1023.5470	1085.5959	1067.5854	1068.5690	1084.5881	534.7845	520.7870	543.2980	L	904.4710	886.4604	887.4440	878.4916	860.4811	861.4647	452.7355	439.7458	7	
14	44.0499	1139.6061	1121.5956	1122.5791	1111.6111	1093.6006	1094.5841	1156.5883	1138.6226	1139.6061	1155.6252	570.3030	556.3055	578.8165	A	791.3870	773.3764	774.3600	765.4076	747.3970	748.3806	396.1935	383.2038	6	
15	101.1078	1267.7009	1249.6742	1250.6740	1239.7059	1221.6954	1222.6790	1284.7279	1266.7174	1267.7009	1283.7201	634.3505	620.3530	642.8640	K	720.3499	702.3393	703.3229	694.3705	676.3599	677.3435	360.6749	347.6852	5	
16	104.0533	1398.7415	1380.7310	1381.7145	1370.7465	1352.7360	1353.7195	1415.7684	1397.7579	1398.7415	1414.7606	699.8707	685.8732	708.3842	M	592.2549	574.2443	575.2279	566.2789	548.2650	549.2485	296.6274	283.6378	4	
17	136.0761	1561.8048	1543.7943	1544.7778	1533.8098	1515.7993	1516.7828	1578.8318	1560.8213	1561.8048	1577.8240	781.4024	767.4049	789.9159	Y	461.2144	443.2038	444.1874	435.2350	417.2245	418.2080	231.1072	218.1175	3	
18	70.0656	1658.8575	1640.8470	1641.8306	1630.8625	1612.8521	1613.8356	1675.8845	1657.8740	1658.8575	1674.8767	829.9288	815.9313	838.4423	P	298.1511	280.1405	281.1241	272.1717	254.1611	255.1447	149.5755	136.5858	2	
19	129.1139														R	201.0983	183.0877	184.0713	175.1189	157.1084	158.0919	101.0491	88.0595	1	

