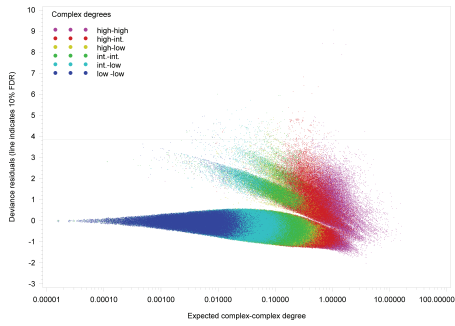


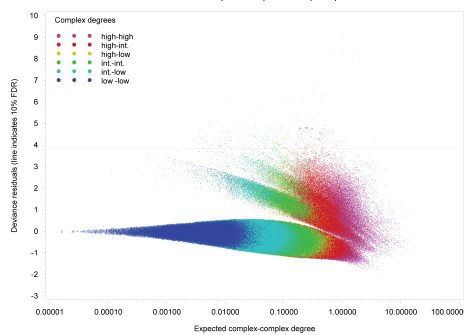
# Expected complex-complex degree versus deviance residuals

## Classification by total complex degree

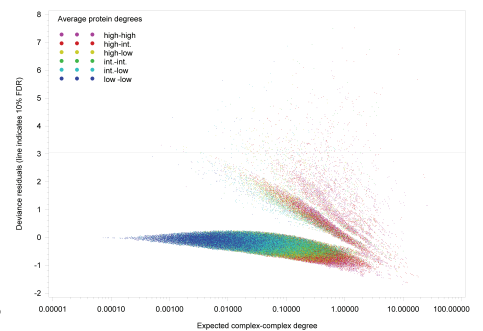
**A** Intra-complex site exclusion (ICE), Human  
Deviance residuals per complex-complex pair



**B** Binding site occupancy (BSO), Yeast  
Deviance residuals per complex-complex pair

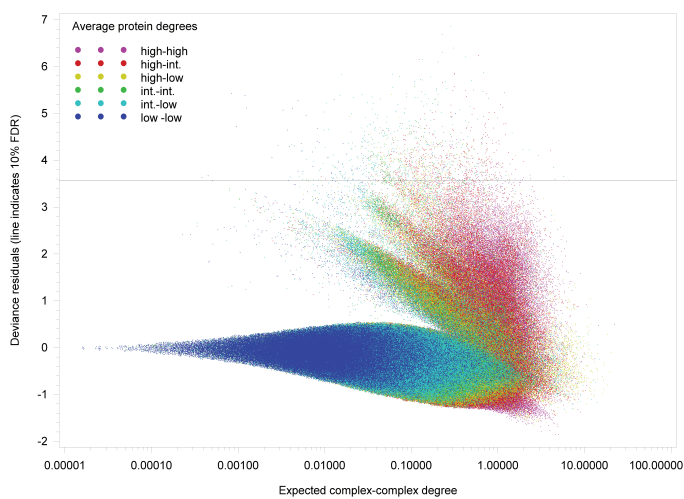


**C** Intra-complex exclusion (ICE), Yeast  
Deviance residuals per complex-complex pair

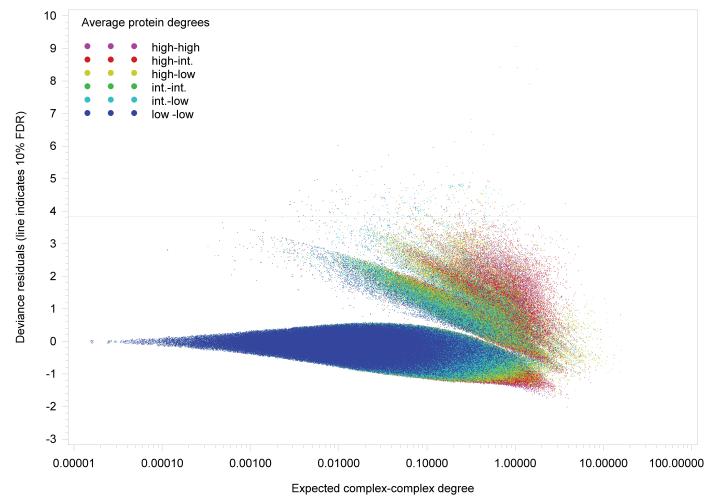


## Classification by average complex degree (Human)

**D** Binding site occupancy (BSO)  
Deviance residuals per complex-complex pair

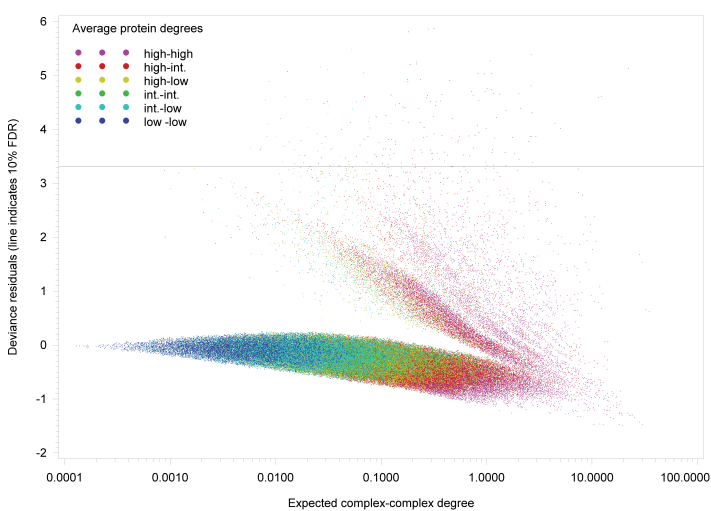


**E** Intra-complex exclusion (ICE)  
Deviance residuals per complex-complex pair



## Classification by average complex degree (Yeast)

**F** Binding site occupancy (BSO)  
Deviance residuals per complex-complex pair



**G** Intra-complex exclusion (ICE)  
Deviance residuals per complex-complex pair

