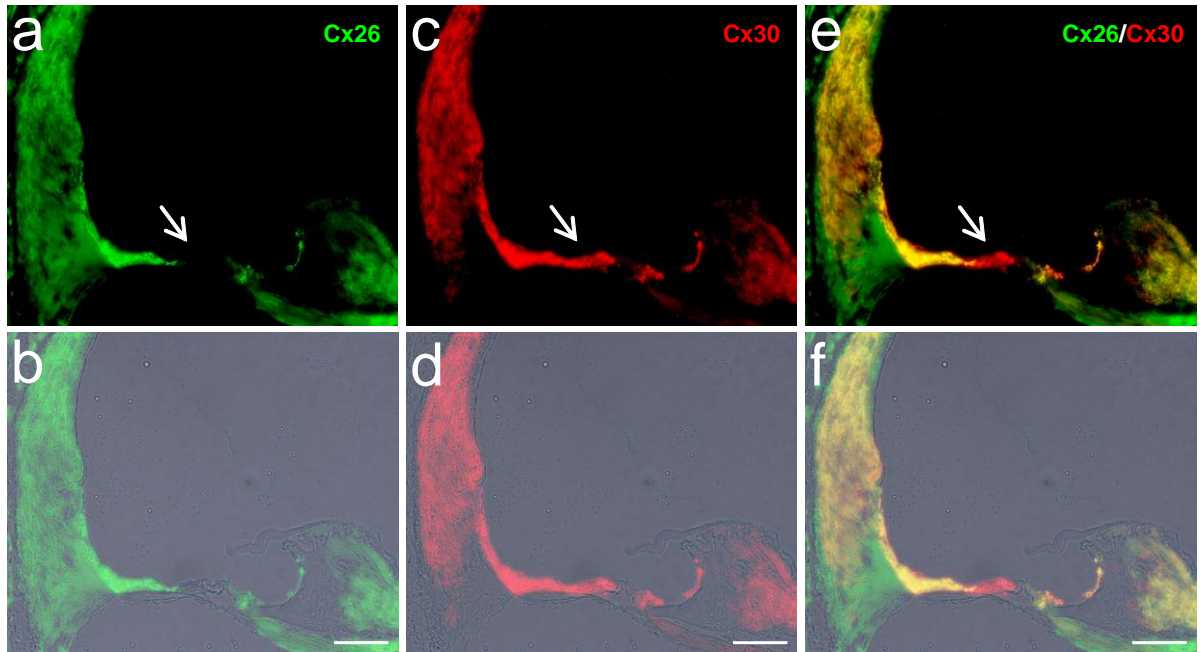


Supplementary Figure S1. Immunofluorescent staining of the cochlea for Cx26 in the Cx26 cKO mice. OHC location is visualized by prestin labeling (red color). White arrows indicate that Cx26 labeling (green color) in Deiters cell and outer pillar cell region is absent in all three turns. Scale bars: 30 μm



Supplementary Figure S2. Double immunofluorescent staining of the cochlea for Cx26 (green) and Cx30 (red) in Cx26 cKO mice. White arrows indicate that Cx26 labeling in Deiters cells and outer pillar cells is absent but Cx30 labeling remains. Cx26 and Cx30 also retain strong labeling in other cochlear structures and appear normal expression. Scale bars: 30 μm