

Supplementary Figure S1

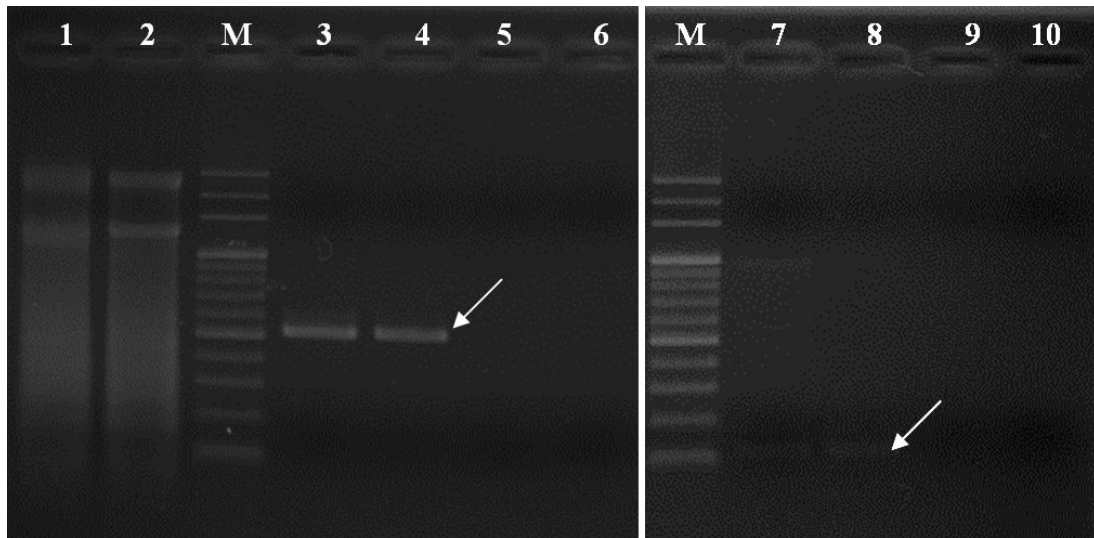


FIG. S1. Quality of RNA samples determined by gel electrophoresis. Lane 1, RNA sample before DNase treatment; 2, RNA sample after DNase treatment; 3, PCR amplification of DNA preparation targeting on 16S rRNA gene; 4, PCR amplification of RNA sample before DNase treatment targeting on 16S rRNA gene; 5, PCR amplification of RNA sample after DNase treatment targeting on 16S rRNA gene; 6, PCR amplification targeting on 16S rRNA gene without template added; 7, PCR amplification of DNA preparation targeting on VP2468; 8, PCR amplification of RNA sample before DNase treatment targeting on VP2468 gene; 9, PCR amplification of RNA sample after DNase treatment targeting on VP2468 gene; 10, PCR amplification targeting on VP2468 without template added. M, molecular mass ladder markers. Arrows indicate the amplified fragments of 16S rRNA gene (lane 3 and 4) or VP2468 gene (lane 7 and 8).