

type II infected HFF lysate

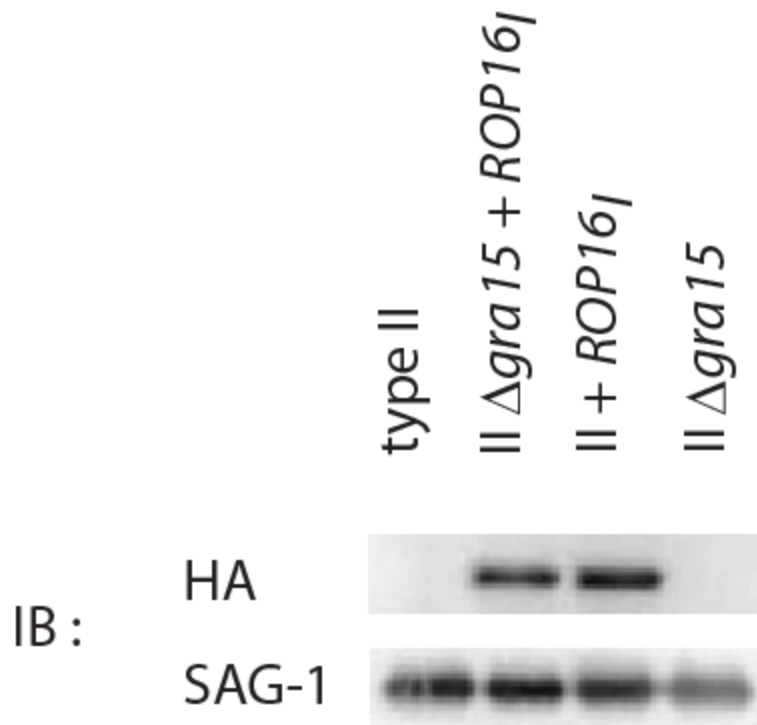


Figure S1. Similar transgenic ROP16_{HA} expression between parasite strains as determined by immuno-blotting.

Lysates of infected HFFs with the indicated strains were analyzed by Western blotting with specific antibodies for the C-terminal-HA tag on ROP16 as well as the *Toxoplasma* surface protein SAG1 to control for parasite loading.