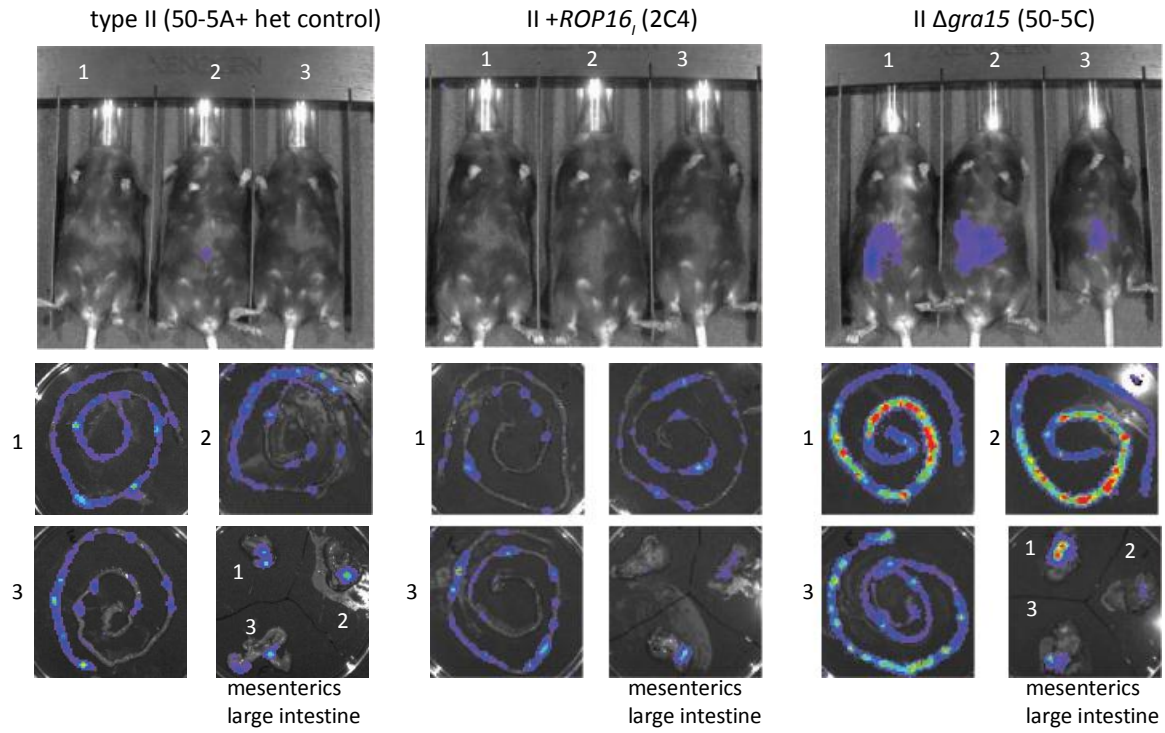
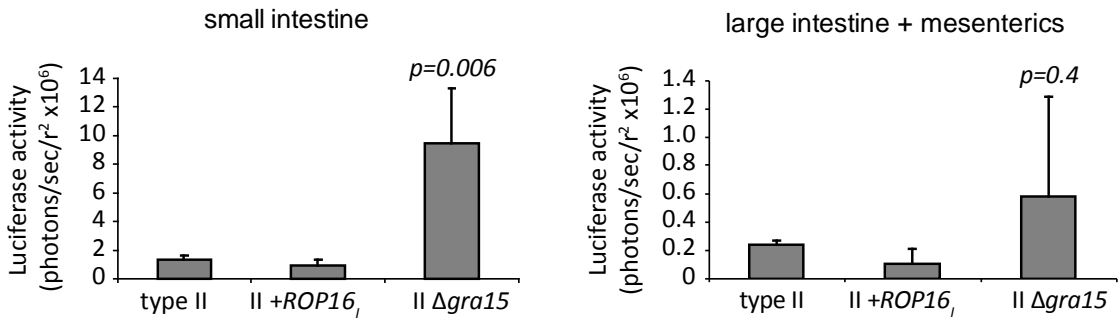


A

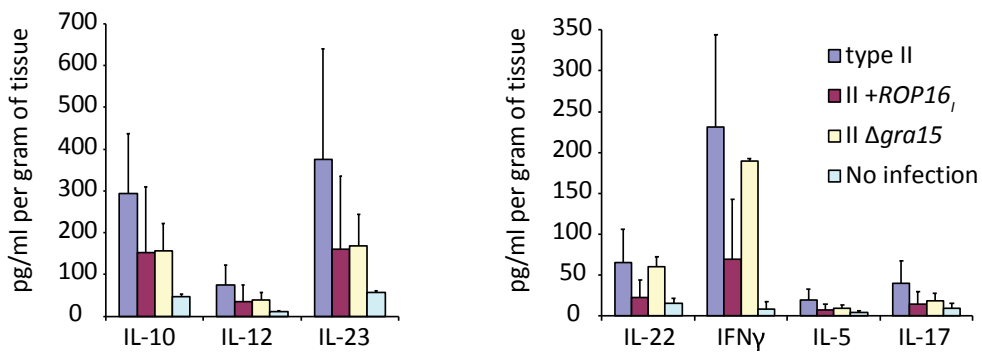
Max 3e5, Min 3e3 Photons/sec/r<sup>2</sup>



B



C



**Figure S4. Intestinal parasite burden and cytokine response on day 5 following oral challenge with different *Toxoplasma* strains.**

A) On day 5 following oral infection with the indicated luciferase expressing type II *Toxoplasma* strains, bio-luminescence imaging of individual mice (1 – 3) (upper panels) and their respective organs - small intestines (middle, and lower left panels) and mesenteries with large intestines (lowest right panel) was performed with an IVIS bio-luminescence imaging machine. Relative photon emission is depicted as a heat map.

B) Average photon emission +SD (photons/sec/r<sup>2</sup>) of the indicated organs as shown A; significant differences between the means of each group were determined by ANOVA testing and P values calculated for organs infected with the II  $\Delta$ *gra15* strain are indicated.

C) On day 5 after initial oral challenge with the indicated parasite strains, small intestines without Peyer's patches were washed, minced and plated in 1.5 ml of medium per gram of tissue. The average cytokine production +SD (pg/ml per gram of tissue) were measured in the supernatant by ELISA 24 hrs later (3 mice per group).