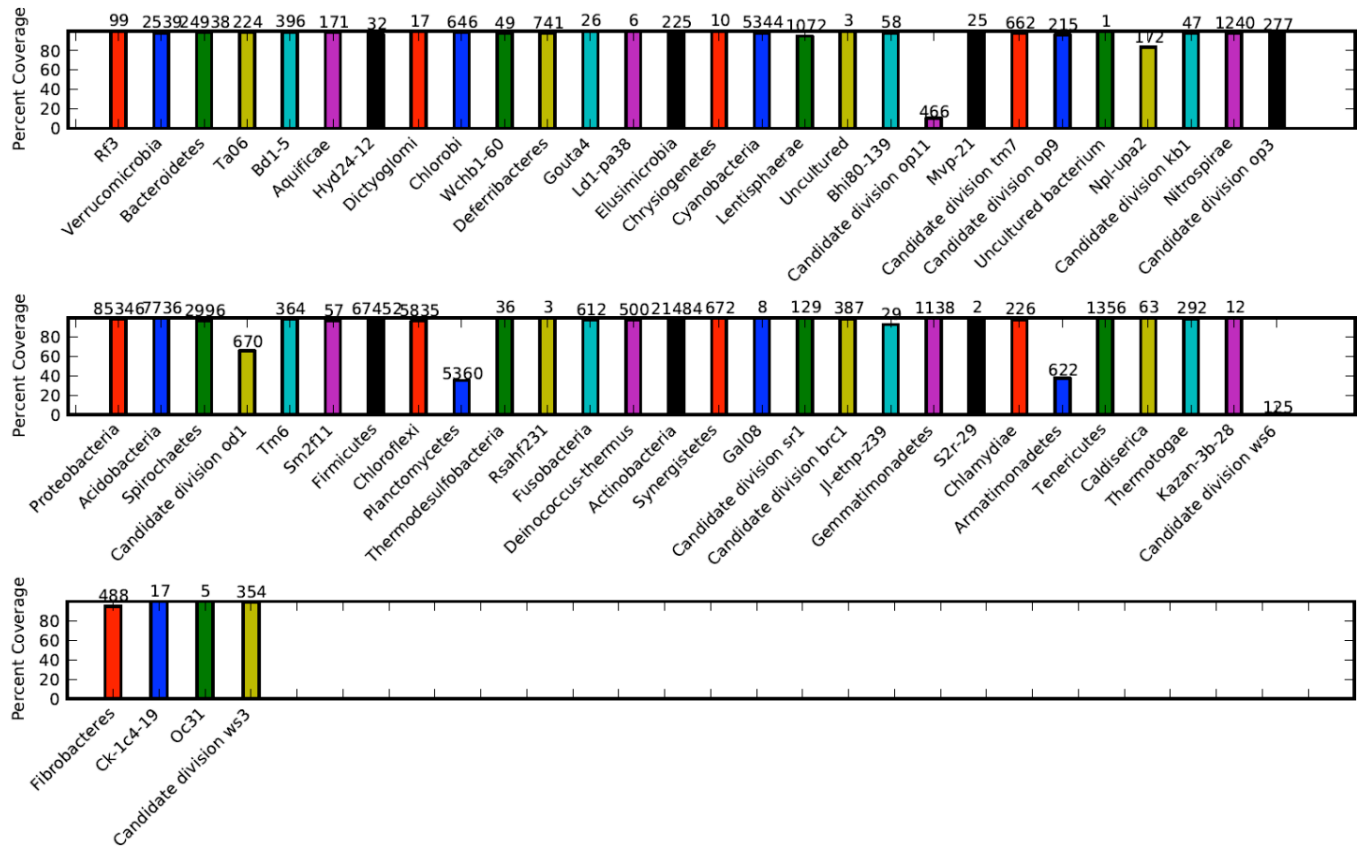
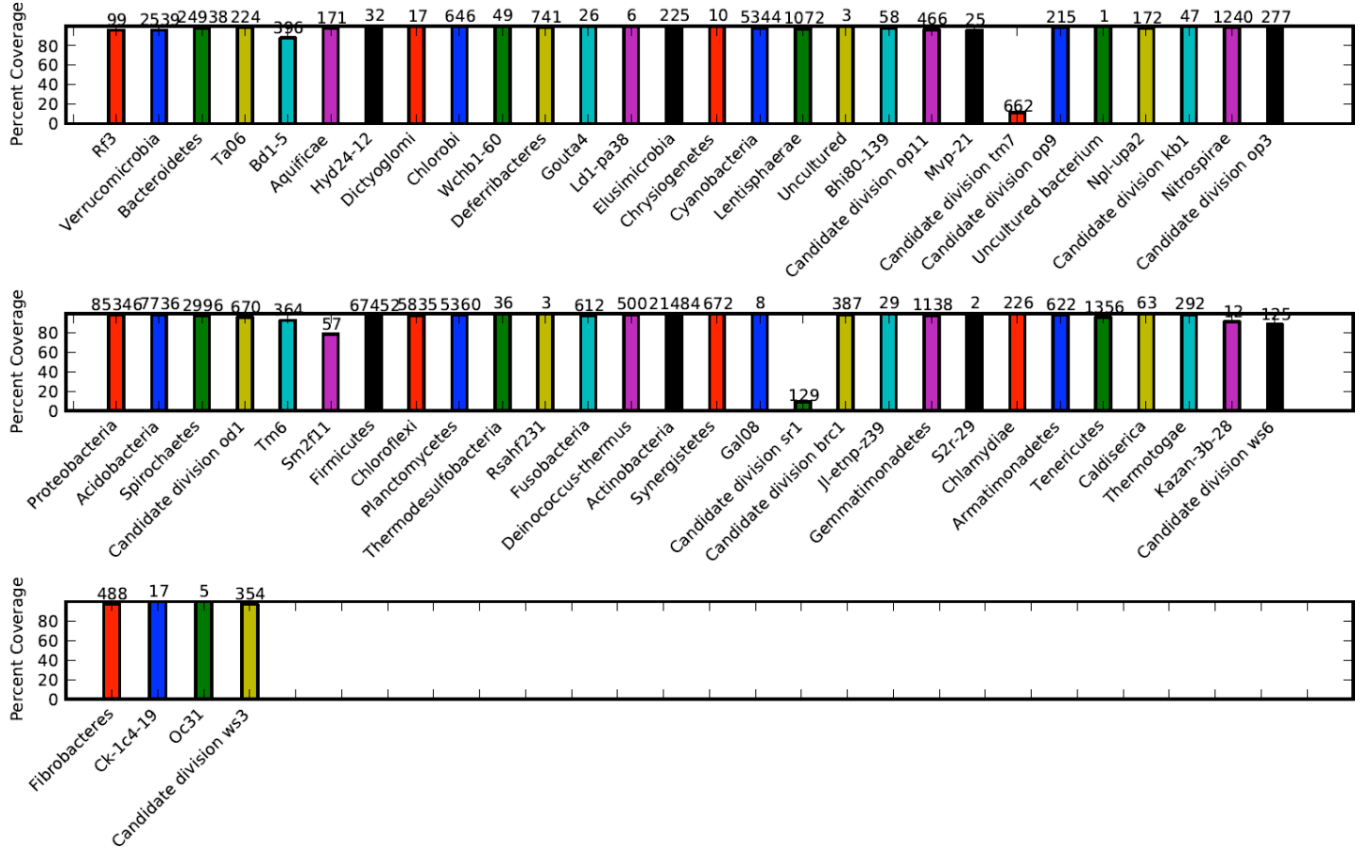


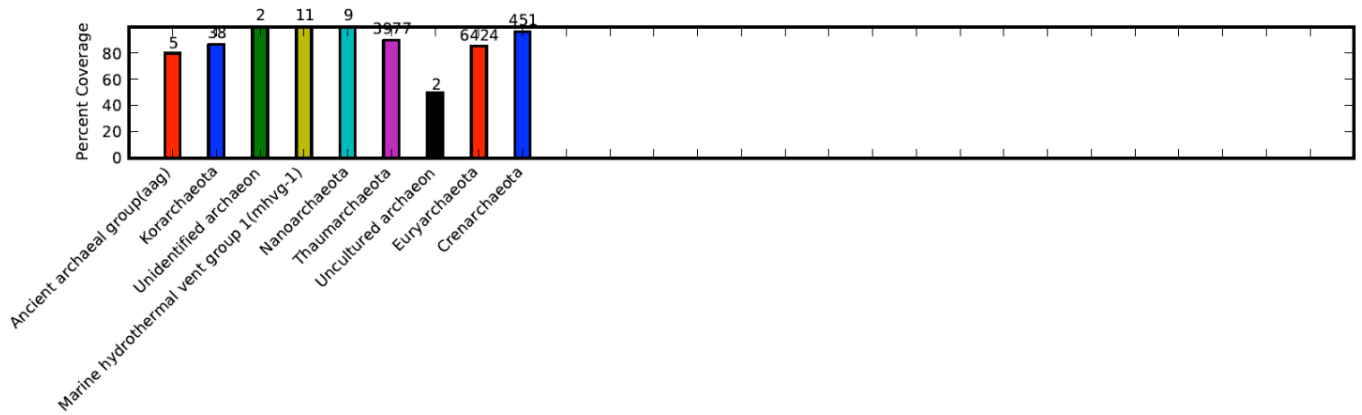
(A) V3for_B



(B) V5rev_B



(C) V3for_A



(D) V5rev_A

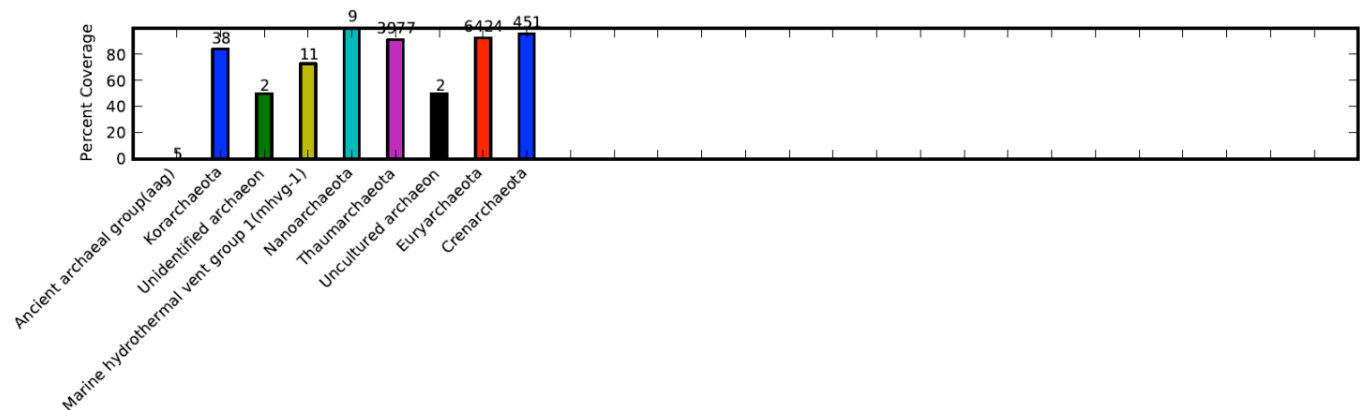


Figure S2. Primer coverage of bacterial and archaeal phyla. Coverage of bacterial phyla of forward (A) and reverse (B) primers and archaeal phyla of forward (C) and reverse (D) primers were determined with PrimerProspector [1]. Colored bars represent percent coverage of the primers and numbers above bars depict total sequences within the SILVA SSU database (release 111 Ref NR) for each phylum [2].

References

1. Walters WA, Caporaso JG, Lauber CL, Berg-Lyons D, Fierer N, et al. (2011) PrimerProspector: de novo design and taxonomic analysis of barcoded polymerase chain reaction primers. *Bioinformatics* 27: 1159-1161.
2. Pruesse E, Quast C, Knittel K, Fuchs BM, Ludwig W, et al. (2007) SILVA: a comprehensive online resource for quality checked and aligned ribosomal RNA sequence data compatible with ARB. *Nucleic Acids Res* 35: 7188-7196.