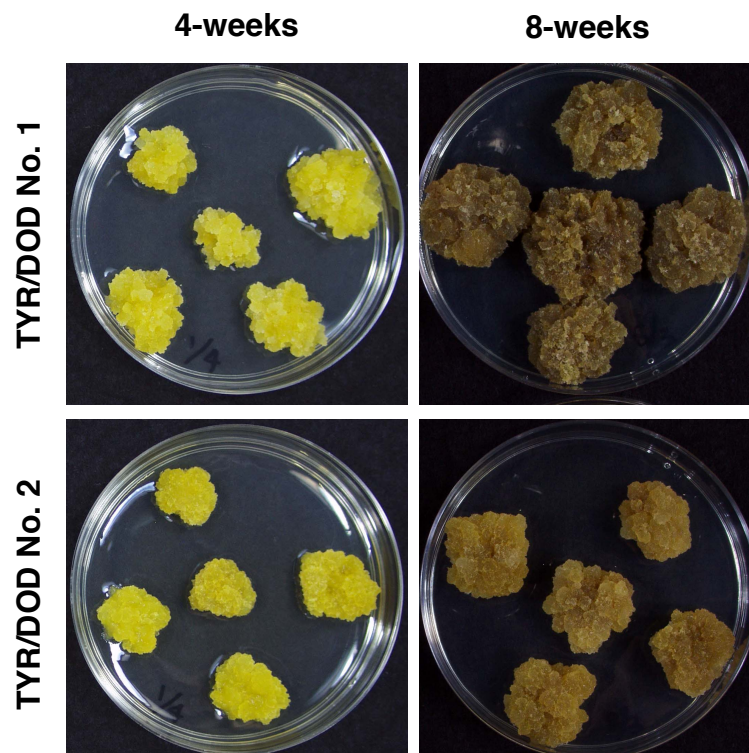


Supplementary Information

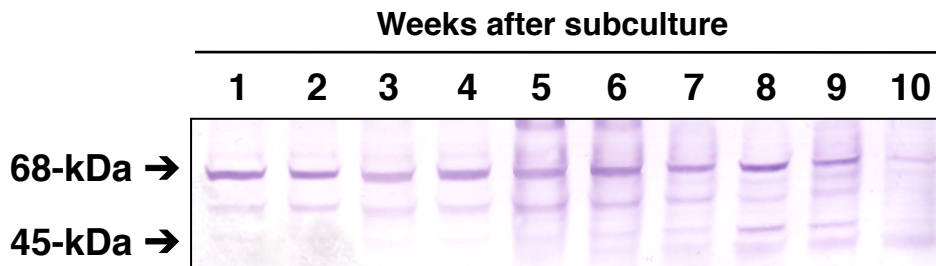
Genetic engineering of yellow betalain pigments beyond the species barrier

Takashi Nakatsuka, Eri Yamada, Hideyuki Takahashi, Tomohiro Imamura, Mariko Suzuki, Yoshihiro Ozeki, Ikuko Tsujimura, Misa Saito, Yuichi Sakamoto, Nobuhiro Sasaki, Masahiro Nishihara



Supp. Figure S1. Images of typical calli of 35Sp-LeTYR/35Sp-MjDOD transgenic BY2 lines no. 1 and 2 cultured for 4 and 8 weeks.

Supp. Figure S1



Supp. Figure S2. Accumulation of LeTYR protein over time in 35Sp-LeTYR/35Sp-MjDOD transgenic BY2 line no. 3.

Total proteins were extracted from transgenic BY2 cells every week and subjected to western blot analysis as described in Materials and methods. Premature and mature LeTYR proteins were detected as 68- and 45-kDa signals (shown by arrows), respectively. Intensity of 45-kDa band became stronger over time and peaked at 8 weeks when high rates of browning occurred.

Supp. Figure S2