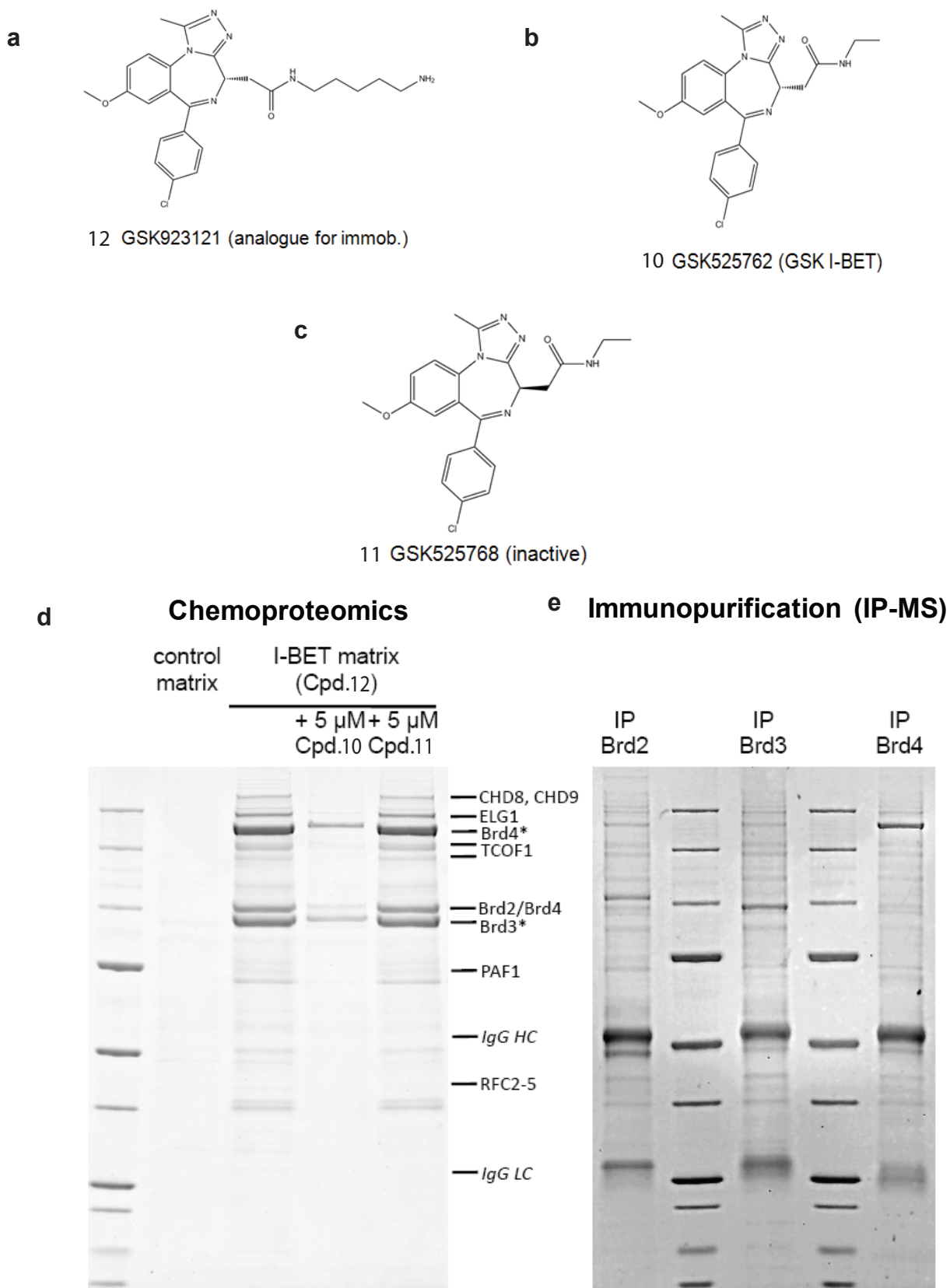


Supplementary Figure 4



Supplementary Figure 4: Human BET proteins Brd2, Brd3, and Brd4 form protein complexes, which can be isolated by immunoaffinity purification and with an I-BET762 inhibitor matrix. GSK923121, an immobilised analogue of I-BET762 (**a**) was used to isolate BET containing complexes from HL60 nuclear lysates (**d**). The specificity of binding is confirmed by the ability of an excess of free I-BET762 (**b**) but not the inactive enantiomer GSK525768, (**c**) to compete bound BET proteins and associated complex components labelled. Selective antibodies are able to immunoprecipitate BET proteins and associated complexes (**e**). The location of proteins identified by MS sequencing is shown between the gels.