

Supplemental Material to:

**George I. Lambrou, Maria Adamaki, Dimitris Delakas,
Demetrios A. Spandidos, Spyros Vlahopoulos and
Apostolos Zaravinos**

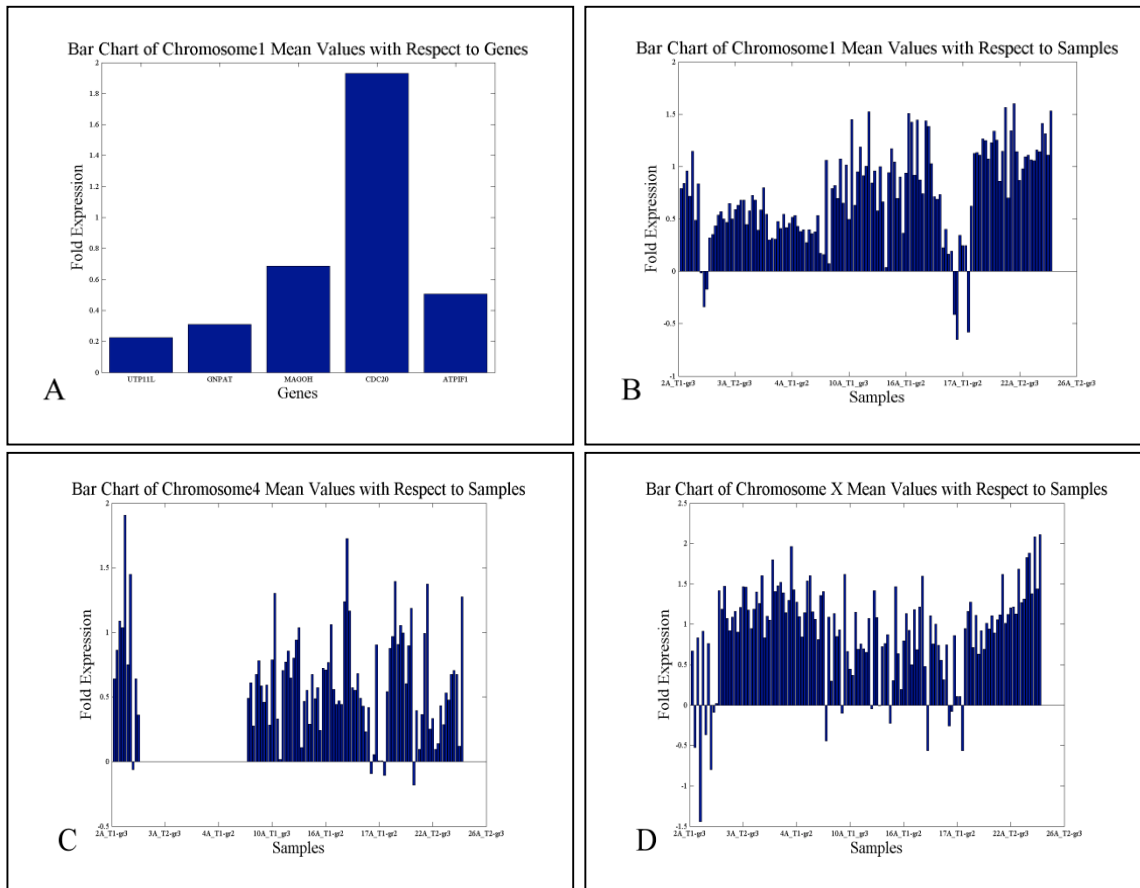
**Gene expression is highly correlated on the chromosome
level in urinary bladder cancer**

2013; 12(10)

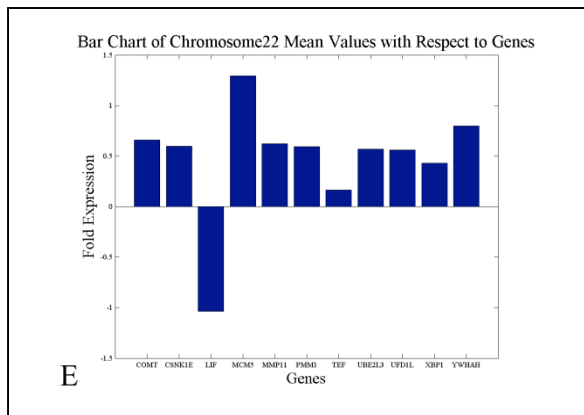
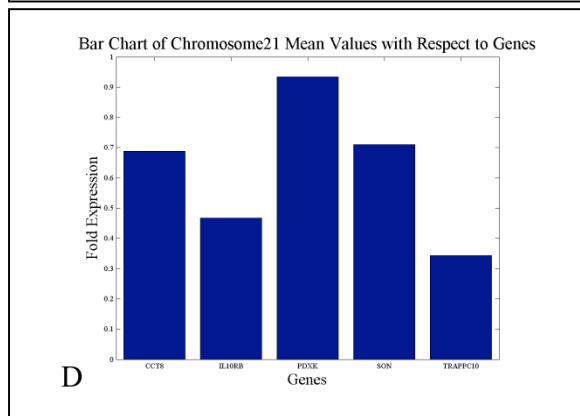
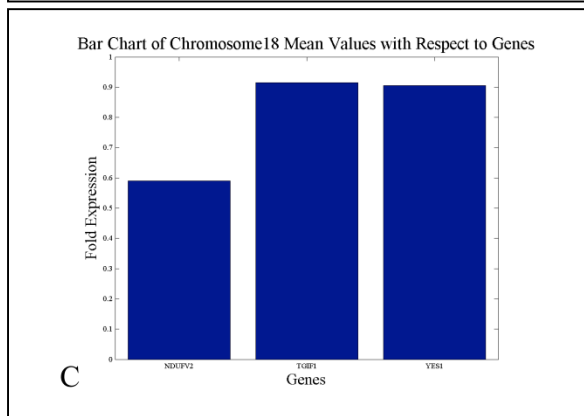
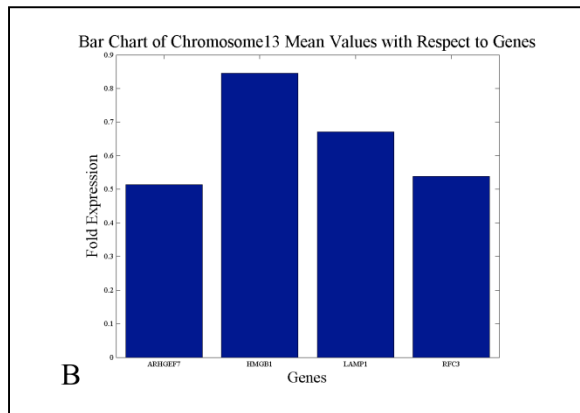
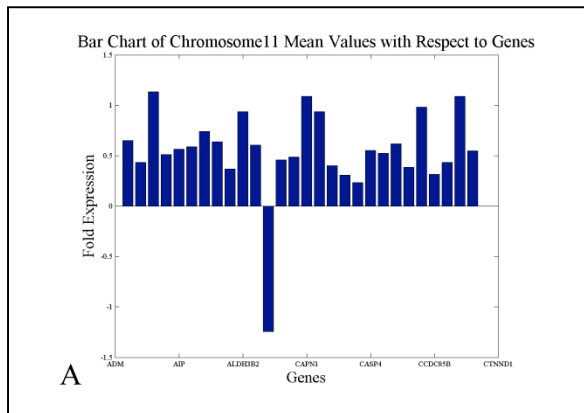
<http://dx.doi.org/10.4161/cc.24673>

<http://www.landesbioscience.com/journals/cc/article/24673>

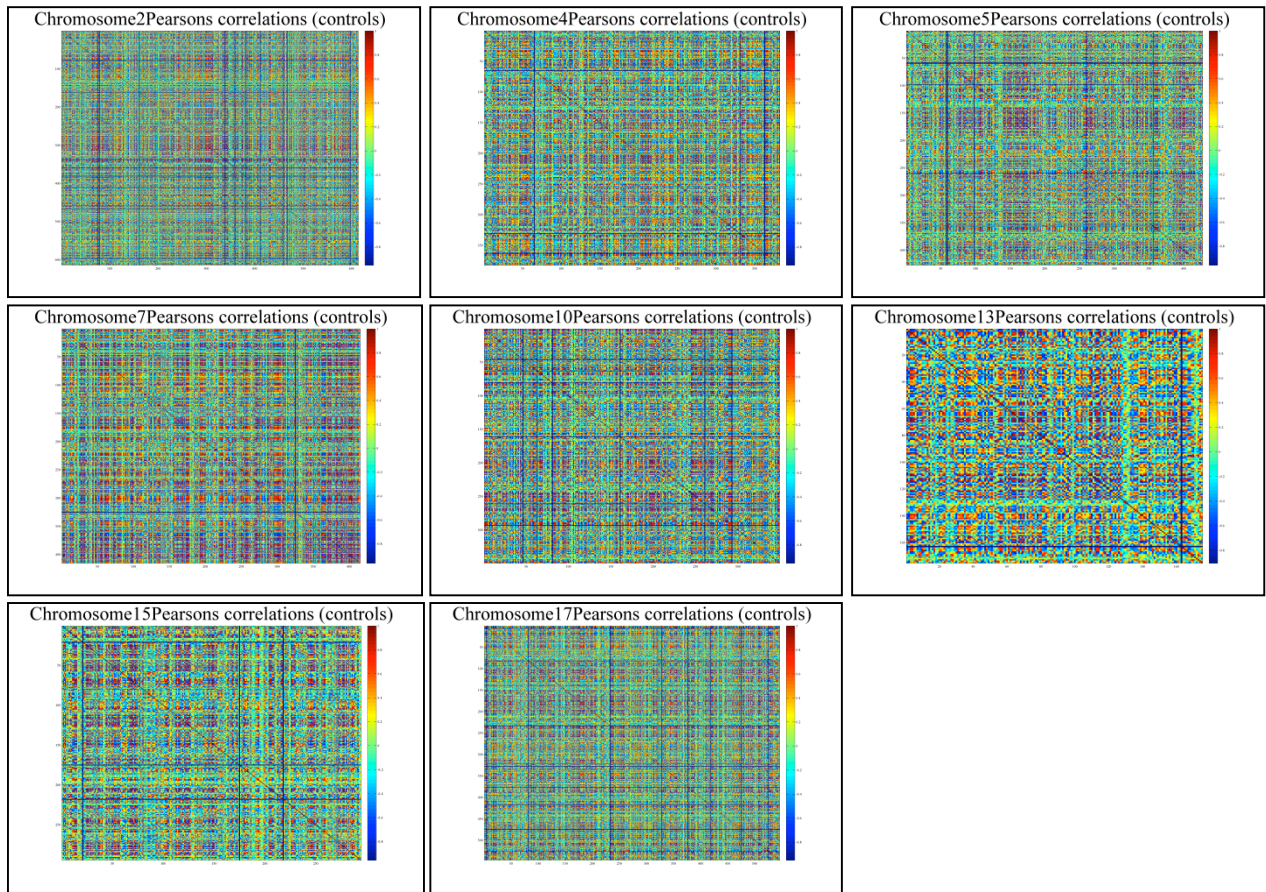
Suppl. Figure 1.



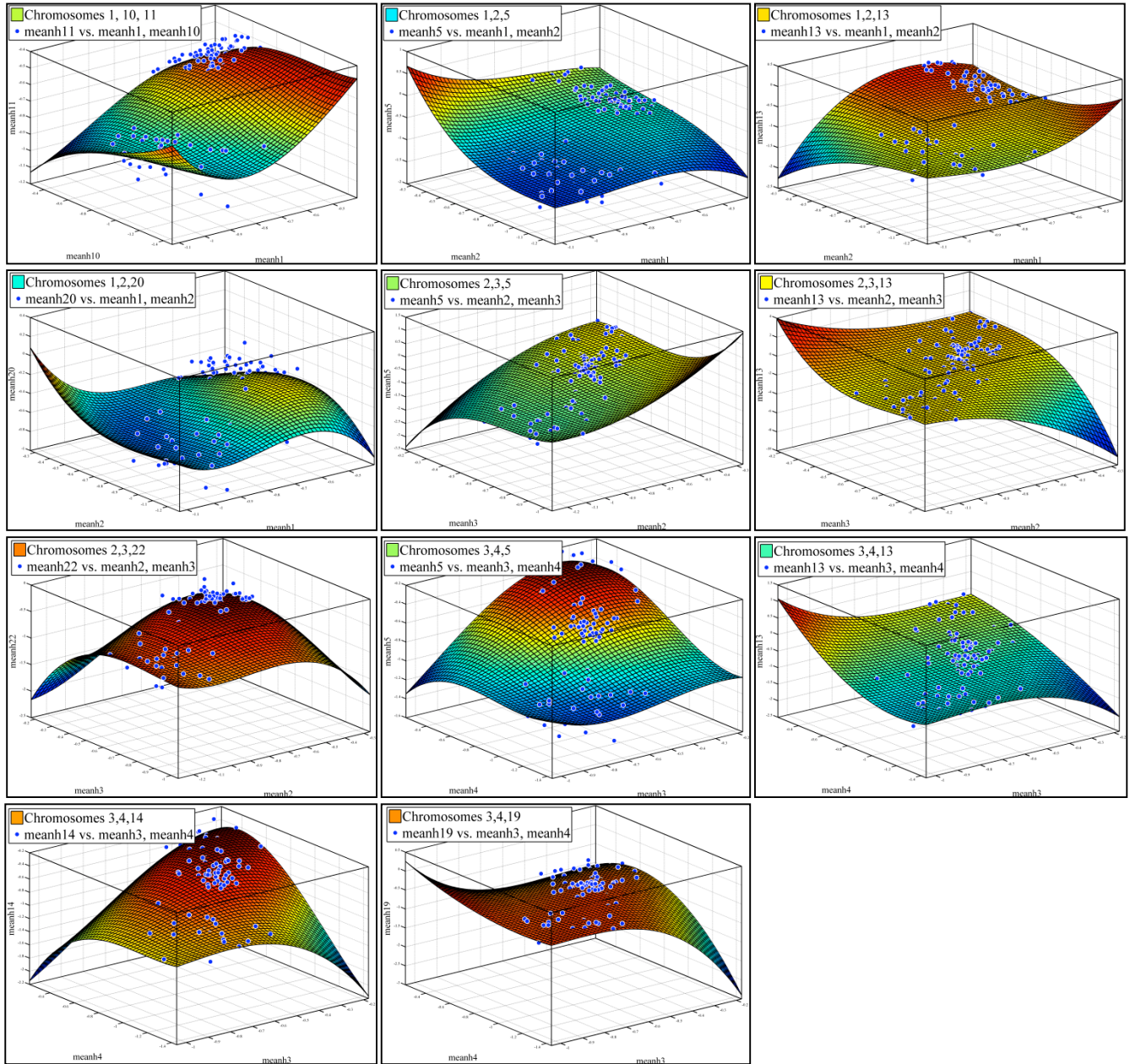
Suppl. Figure 2.



Suppl. Fig. 3



Suppl. Fig. 4

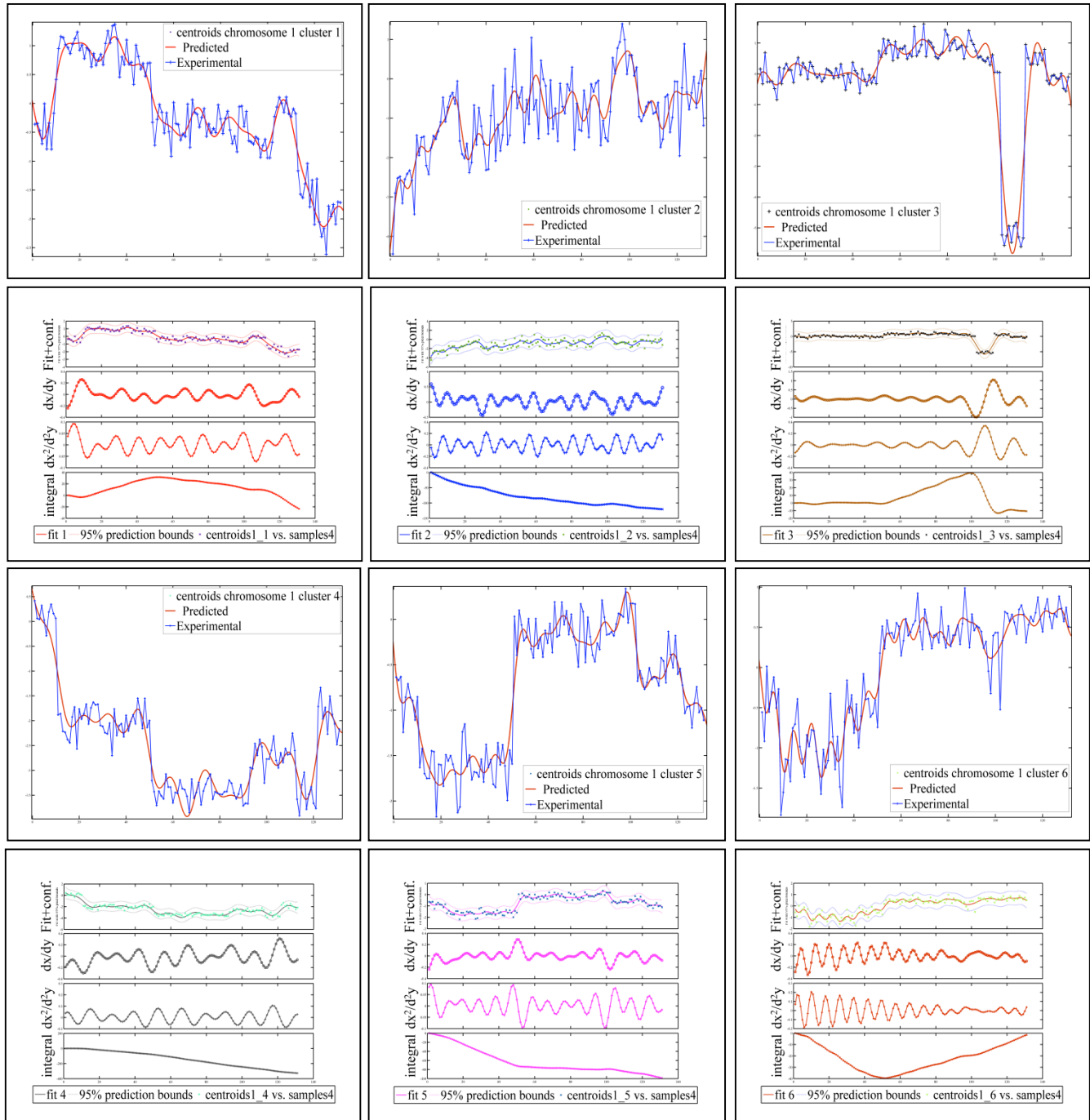


Suppl. Fig. 5

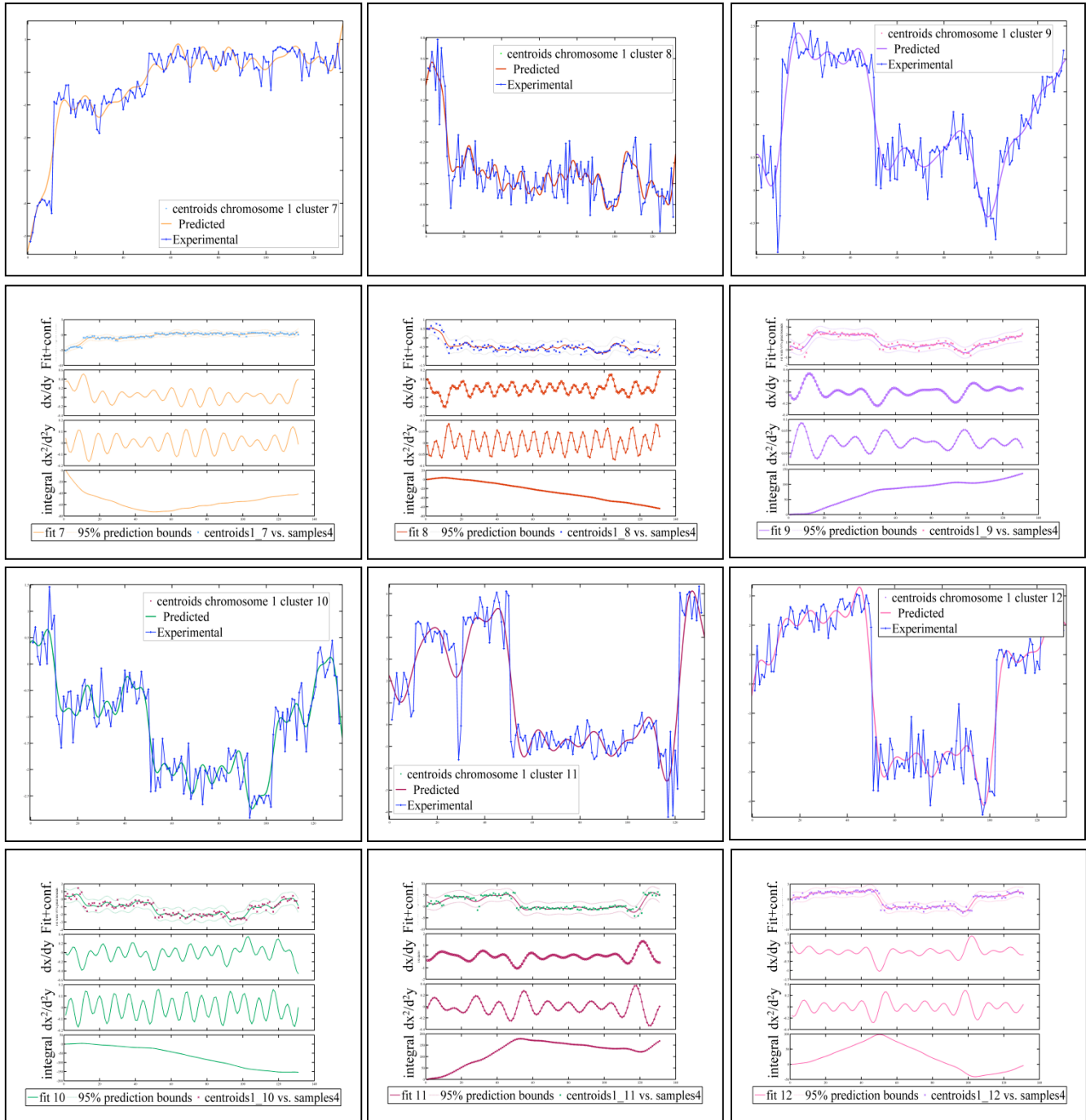


Suppl. Fig. 6

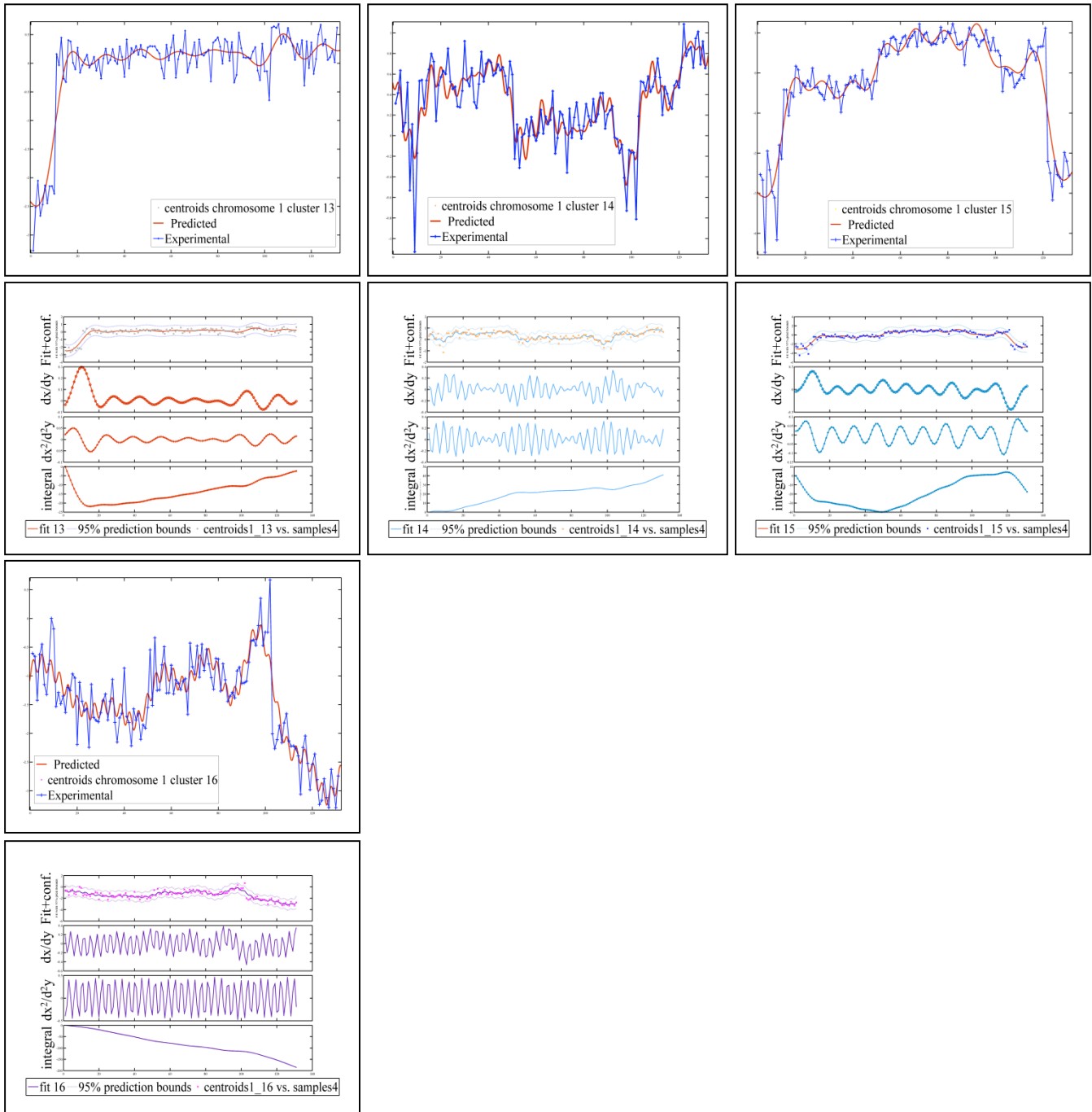
A)



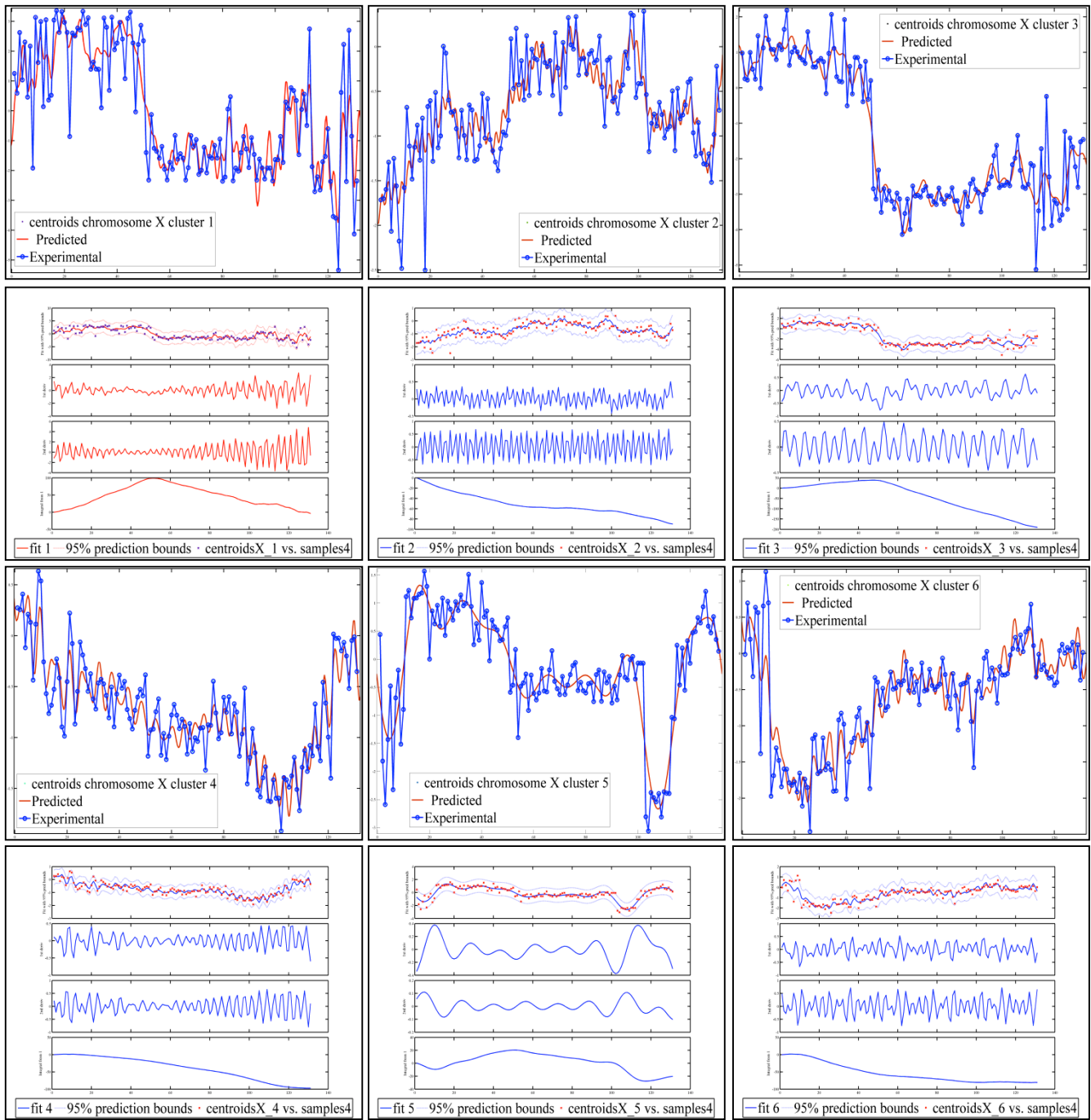
(B)



(c)



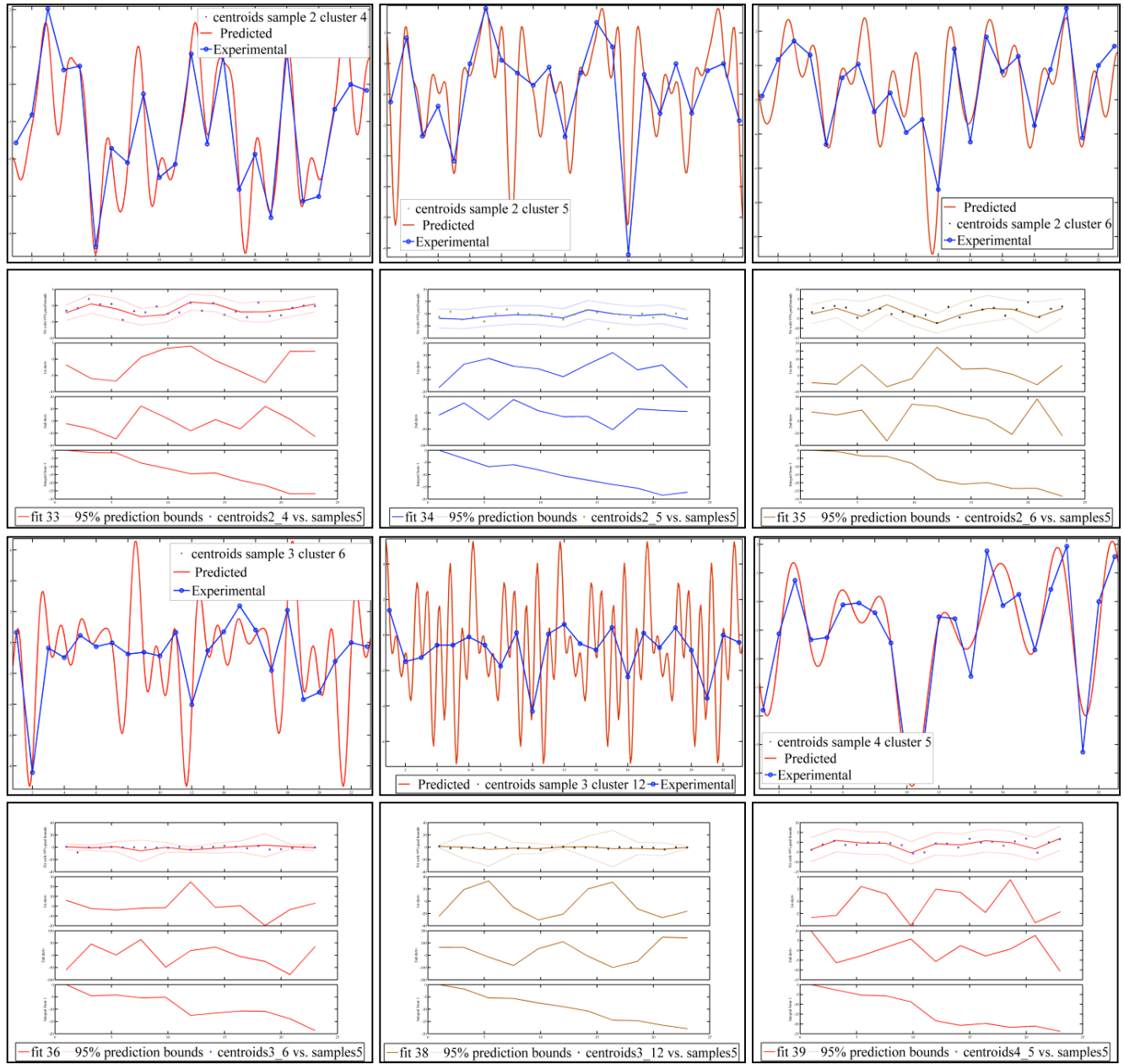
Suppl. Fig. 7



Suppl. Fig. 8



Suppl. Fig. 9



Suppl. Fig. 10

