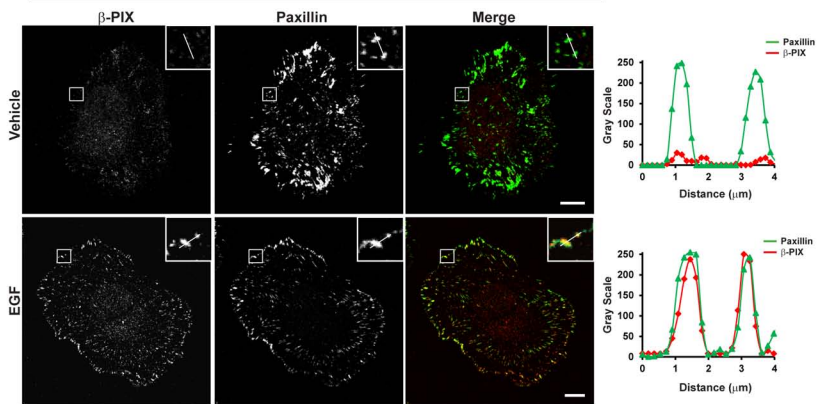
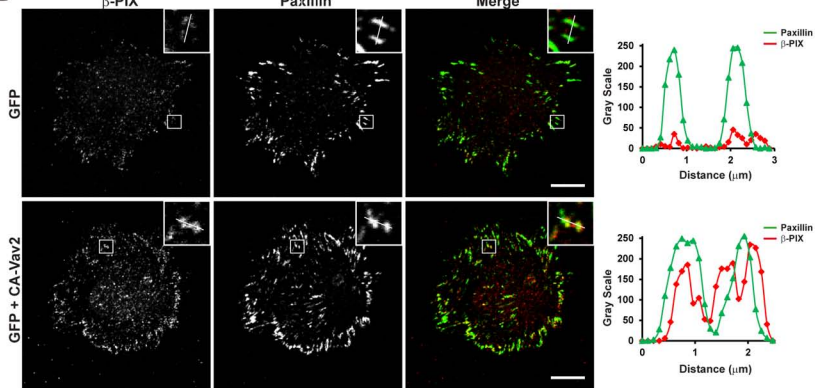
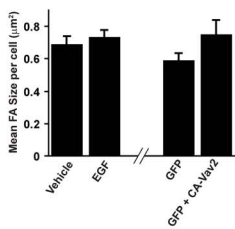
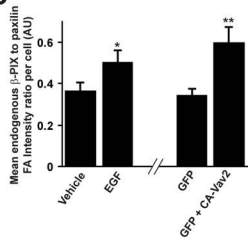


Supplementary Information

Figure Legends

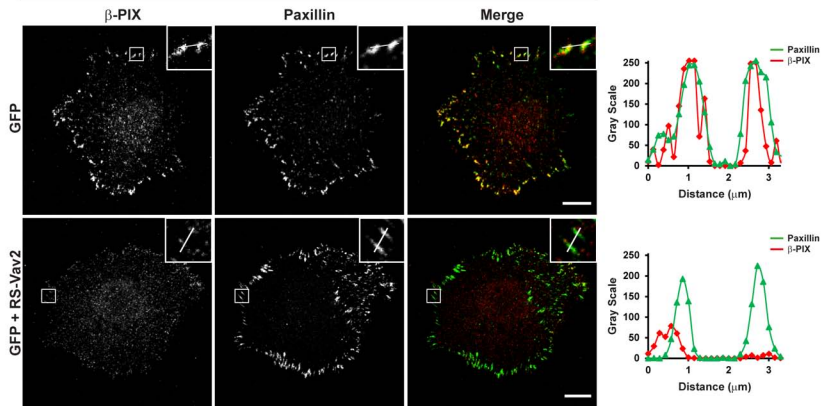
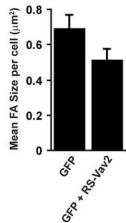
Figure S1. EGF and constitutively active Vav2 (CA-Vav2) enhance β -PIX localization to adhesions. (A) HT1080 cells were spread on FN in the absence or presence of EGF for 30 minutes then stained for paxillin and β -PIX. Scale bar 10 μ m. (B) HT1080 cells transfected with GFP or GFP plus HA-CA-Vav2 were spread on FN in the absence of EGF for 30 minutes then stained for paxillin and β -PIX. Scale bar 10 μ m. The average focal adhesion size (C), the average ratio of β -PIX intensity to paxillin intensity per adhesion (D) was quantified using Image J. Values represent the mean \pm S.E.M for 3 experiments and at least 8 cells per experiment. *P<0.05, **P<0.005

Figure S2. Vav2 exchange activity is required for EGF-stimulated localization of β -PIX to adhesions. (A) HT1080 cells transfected with GFP or GFP together with dominant negative RS-Vav2 were spread on FN for 30 minutes in the presence of EGF, then stained for β -PIX and paxillin. Scale bars 10 μ m. Line profiles through adhesions indicated in (A) demonstrate decreased intensity of β -PIX in paxillin-positive adhesions. The average focal adhesion size (C), the average ratio of β -PIX intensity to paxillin intensity per adhesion (D) was quantified using Image J. Values are means \pm S.E.M for 3 experiments and at least 6 cells per experiment. *P<0.04

A FN 30min**B** β -PIX Paxillin Merge**C****D**

A

FN + EGF 30min

**B****C**