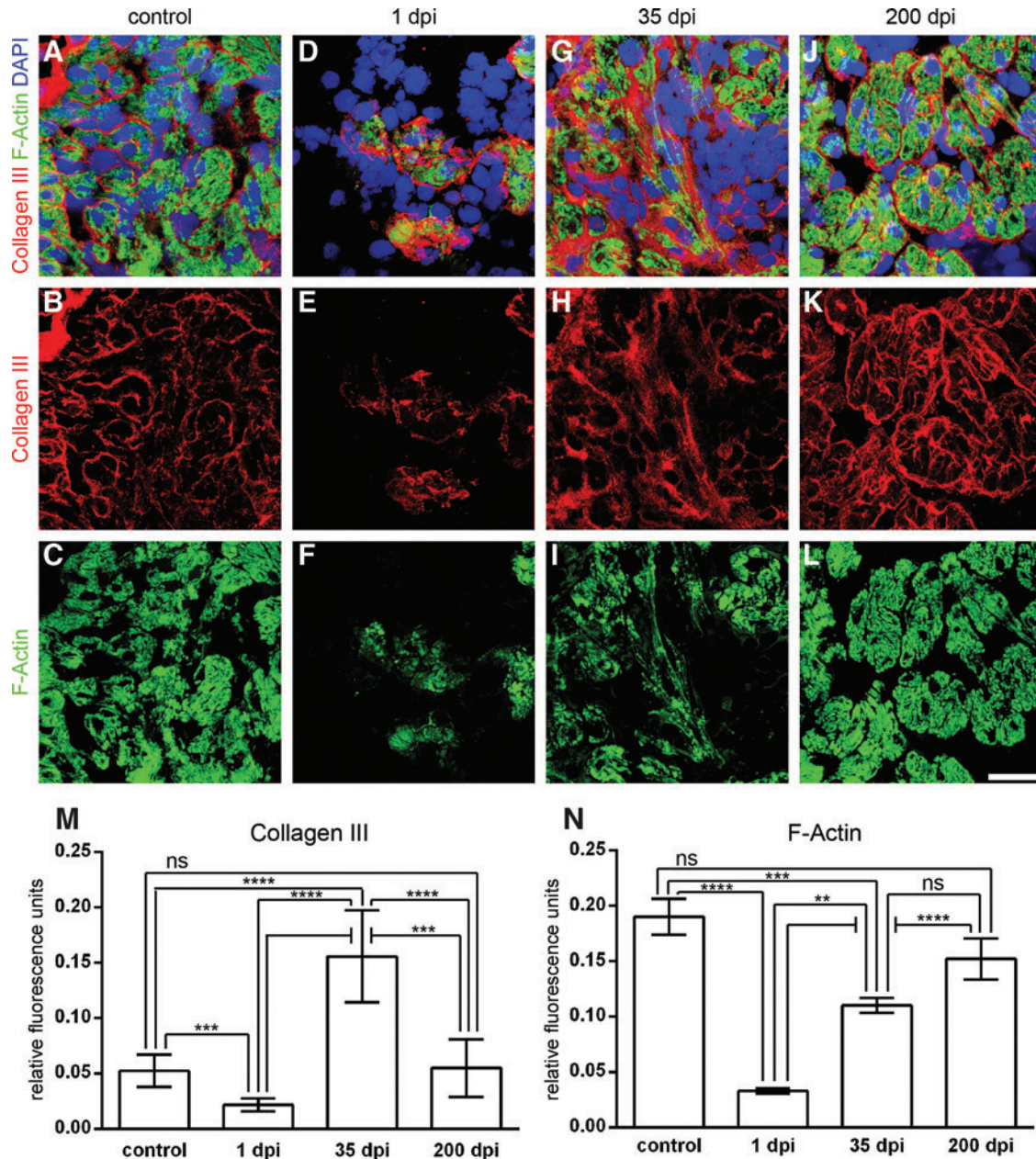


Supplementary Data



SUPPLEMENTARY FIG. S1. Quantitative analysis of the collagen III and F-actin expression during regeneration of newt hearts. (A–L) Immunofluorescence staining for collagen III and F-actin in the myocardium of the control and injured hearts. (A–C) Collagen III is located around F-actin-positive cardiomyocytes within the myocardium of control hearts. (D–F) At 1 dpi, collagen III and F-actin expression declines. (G–I) Collagen III levels increase until 35 dpi when the F-actin signal is partially recovered. (J–L) At 200 dpi, no significant differences of collagen III and F-actin signal is evident, indicating completion of regeneration. (M) Quantitative analysis of collagen III expression. A significant reduction is apparent at 1 dpi. The peak of collagen III expression is reached at 35 dpi. Normal expression levels are accomplished at 200 dpi. (N) Reduction of F-actin expression at 1 dpi. Afterward, F-actin levels increase to normal concentrations at 200 dpi. Scale bar: 50 μ m; ns: not significant; ** $P < 0.01$; *** $P < 0.005$; **** $P < 0.001$.