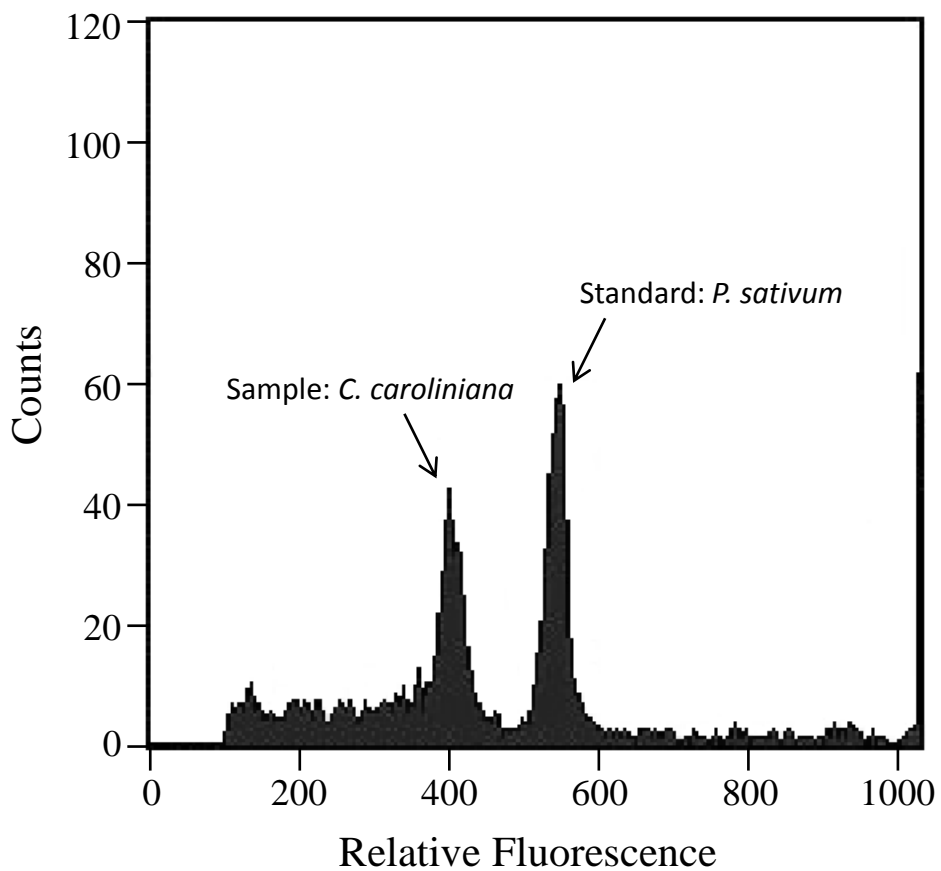


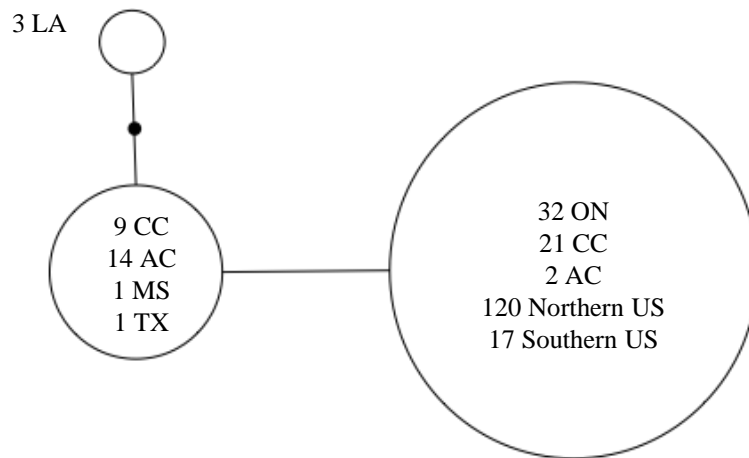
**Pathways of introduction of the invasive aquatic plant**  
*Cabomba caroliniana*

A. McCracken, J.D. Bainard, M.C. Miller and B.C. Husband

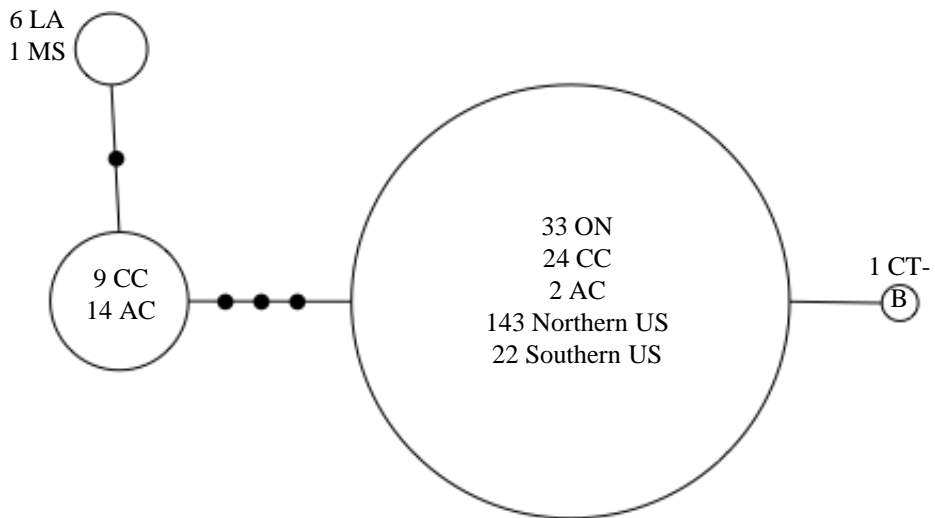
Supporting Information



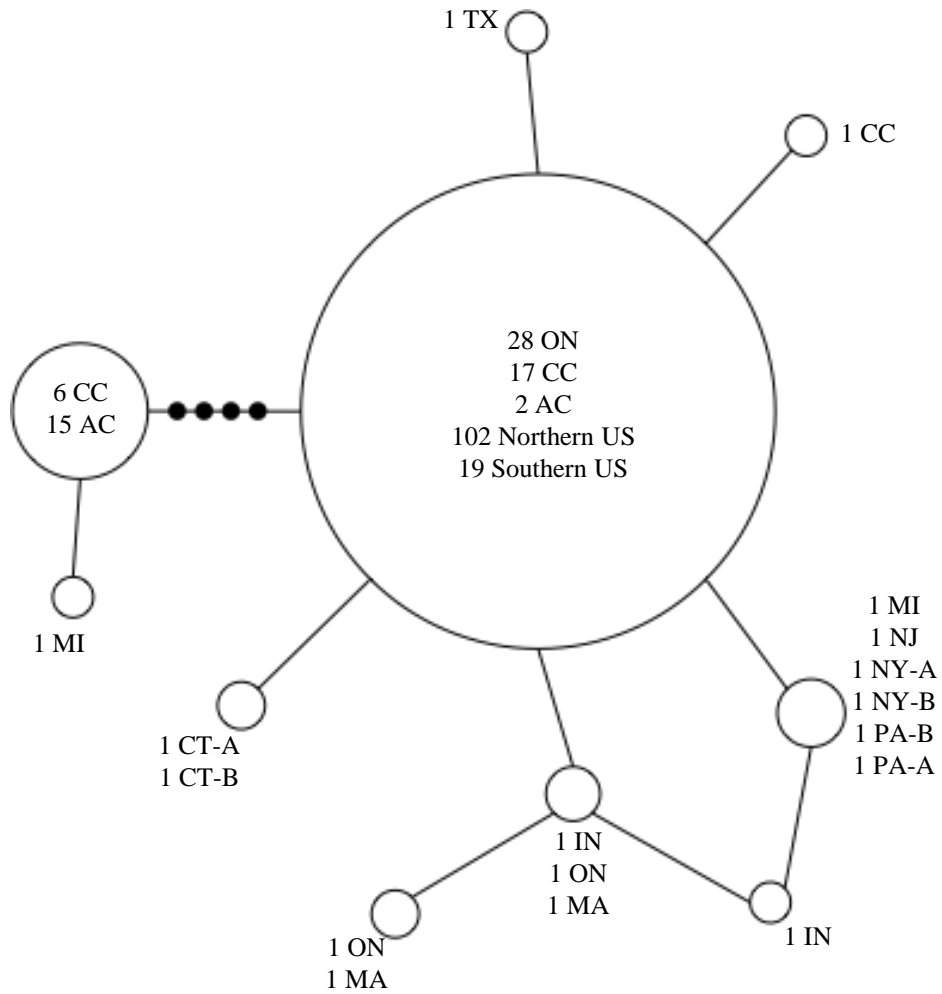
**Figure S1.** Example flow cytometry histogram for determining 2C DNA content of *Cabomba caroliniana*.



**Figure S2.** Statistical parsimony haplotype network of *atpF-atpH*. The number of representatives from each geographic region is provided. Black dots represent missing haplotypes.



**Figure S3.** Statistical parsimony haplotype network of *trnH-psbA*. The number of representatives from each geographic region is provided. Black dots represent missing haplotypes.



**Figure S4.** Statistical parsimony haplotype network of *trnL-trnF*. The number of representatives from each geographic region is provided. Black dots represent missing haplotypes.