

In Vitro Study of α -Synuclein Protofibrils by Cryo-EM Suggests a Cu^{2+} -Dependent Aggregation Pathway

Hangyu Zhang,[†] Amy Griggs,[‡] Jean-Christophe Rochet,[‡] and Lia A. Stanciu^{†§*}

[†]Weldon School of Biomedical Engineering, [‡]Department of Medicinal Chemistry and Molecular Pharmacology, and [§]School of Materials Engineering, Purdue University, West Lafayette, Indiana

Cryo-EM of α -Synuclein Protofibrils

Zhang et al.

Submitted January 9, 2013, and accepted for publication April 23, 2013.

*Correspondence: lstanciu@purdue.edu

Supporting Material

Figure Legends

FIGURE S1 | Negative stain TEM images of heterogeneous structures of WT α -synuclein.
A, Annular protofibrils. B, Spherical protofibrils.

FIGURE S2 | A typical cryo-negative staining TEM image of heterogeneous protofibrils of WT α -synuclein (A) and a typical cryo-EM image of WT α -synuclein in absence of copper (B).

FIGURE S1

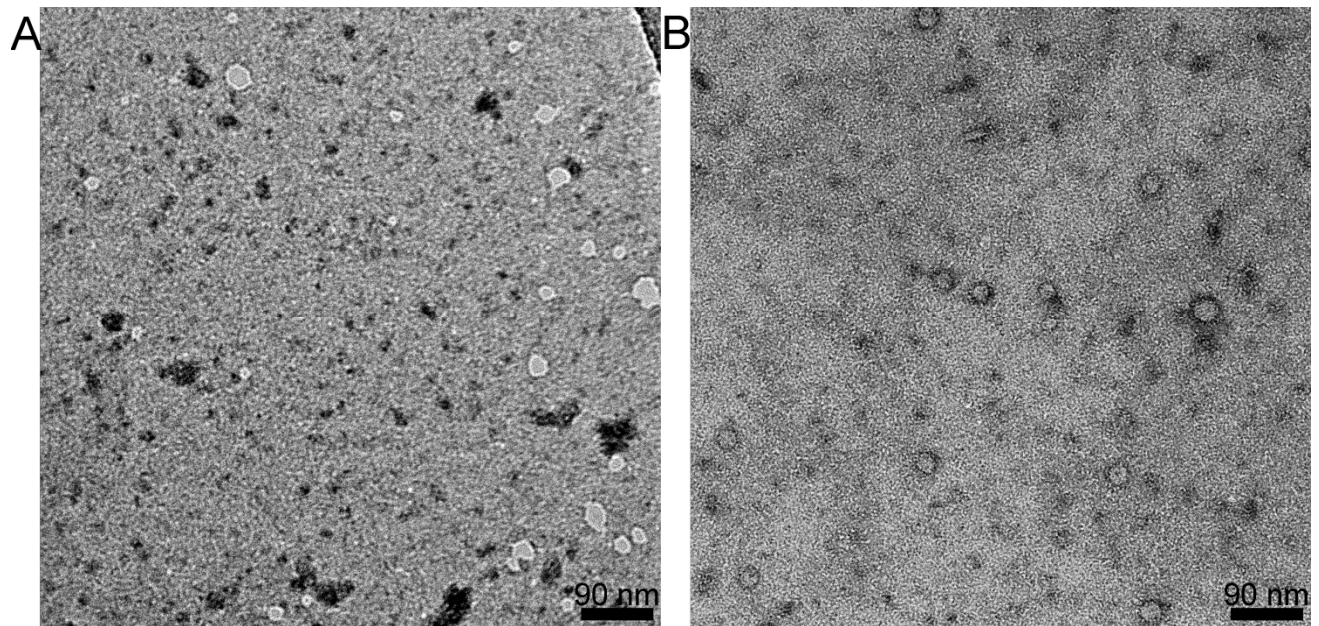


FIGURE S2

