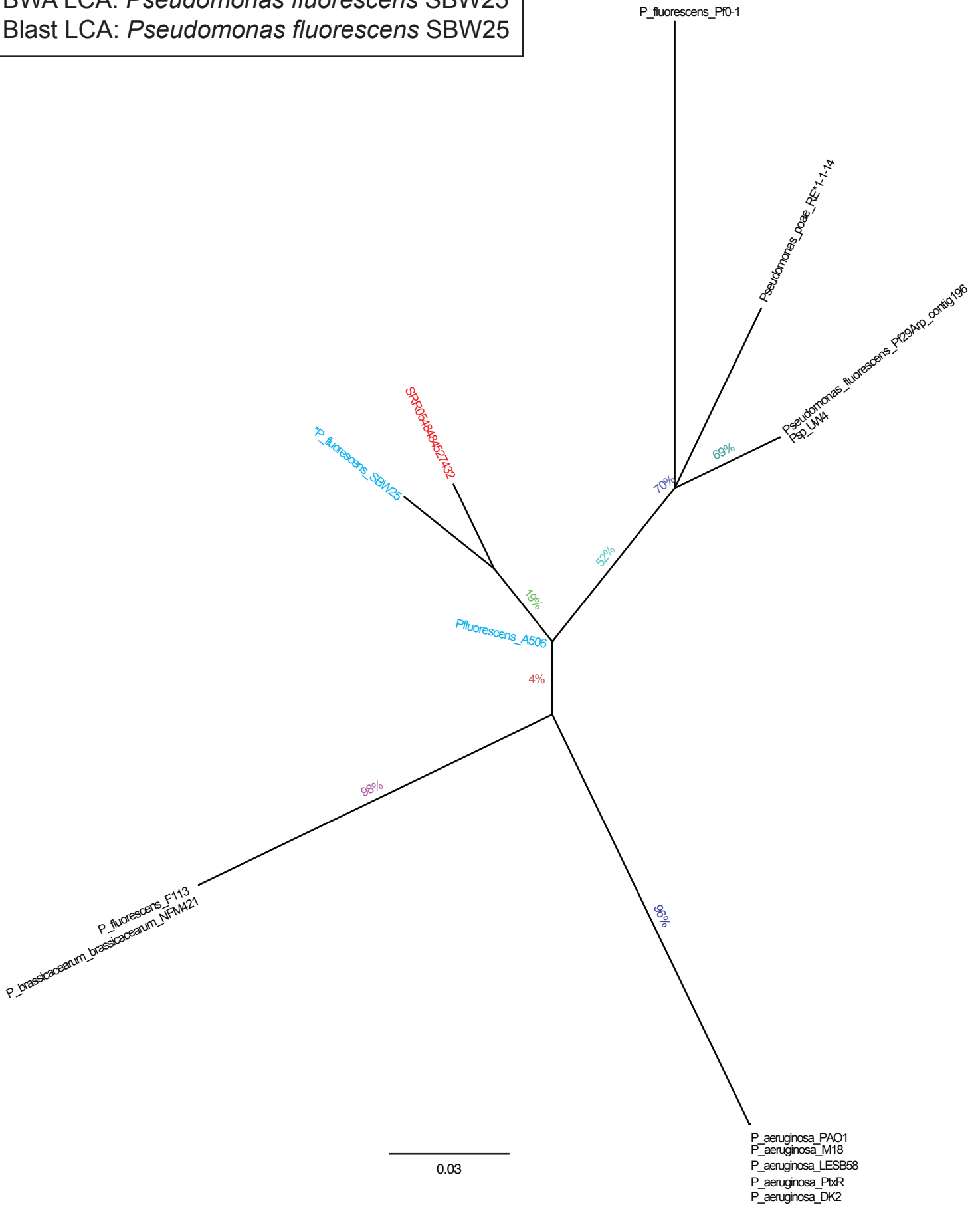


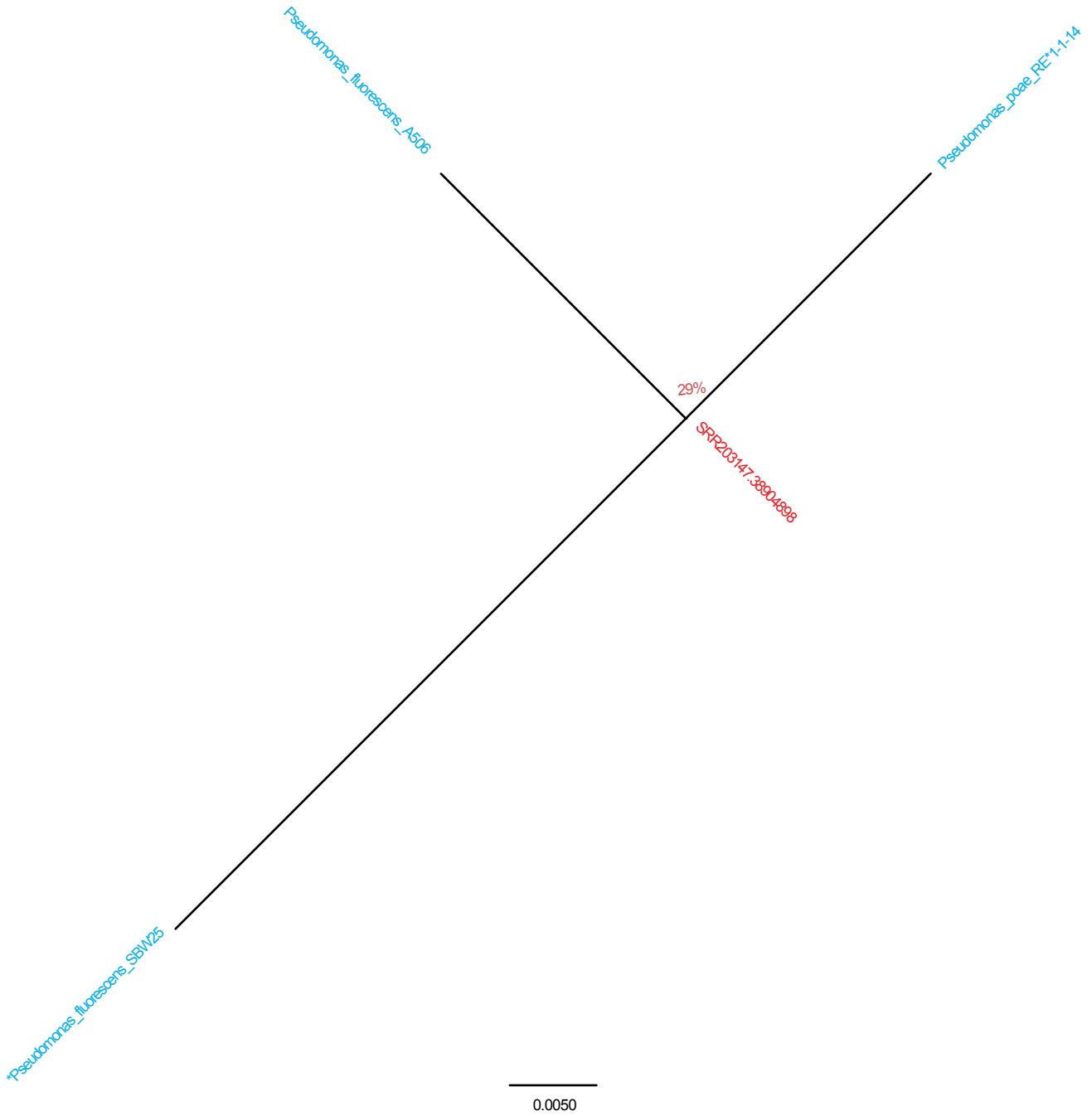
A

BWA LCA: *Pseudomonas fluorescens* SBW25
Blast LCA: *Pseudomonas fluorescens* SBW25



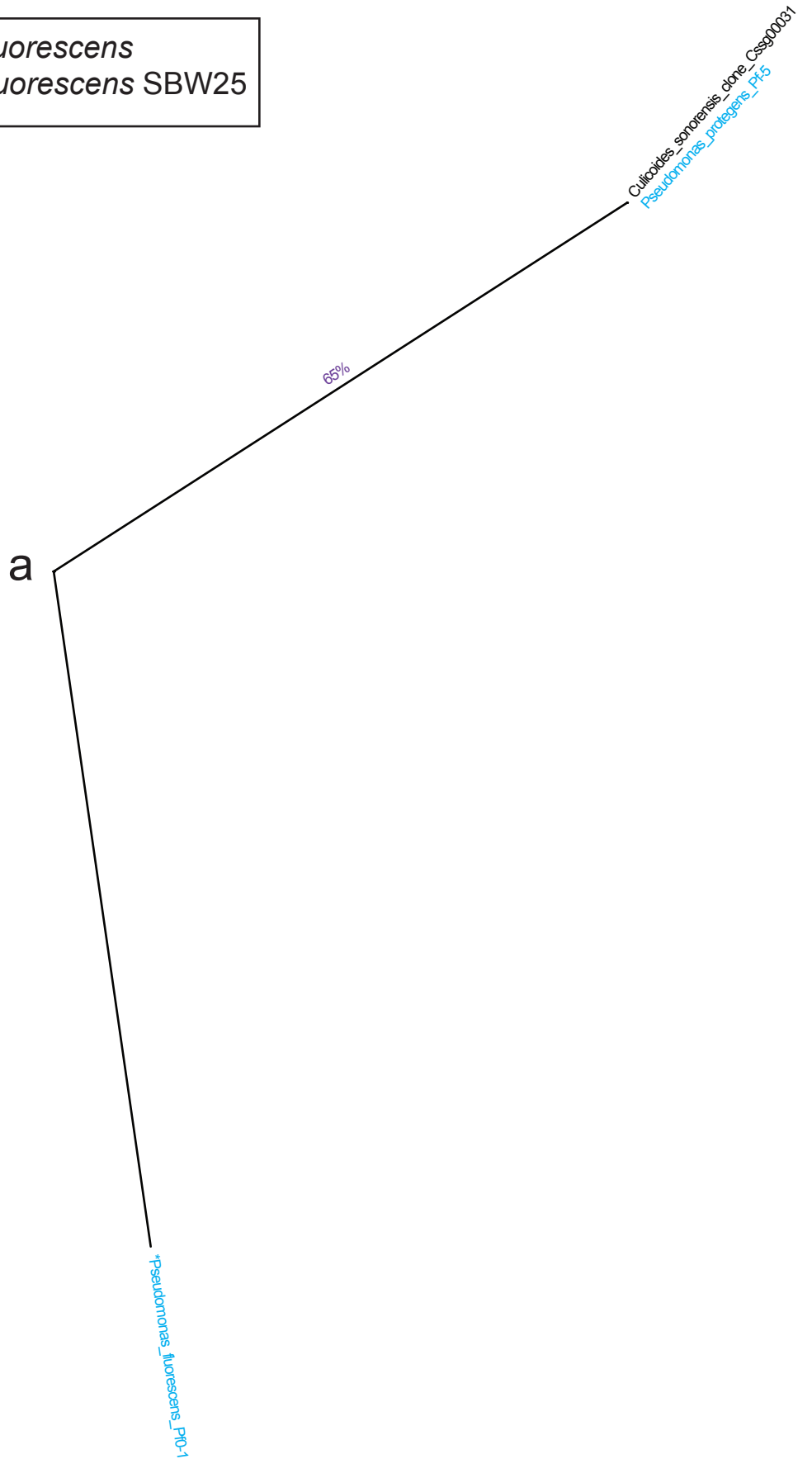
B

BWA LCA: *Pseudomonas fluorescens* SBW25
Blast LCA: *Pseudomonas fluorescens* SBW25



C

BWA LCA: *Pseudomonas fluorescens*
Blast LCA: *Pseudomonas fluorescens* SBW25

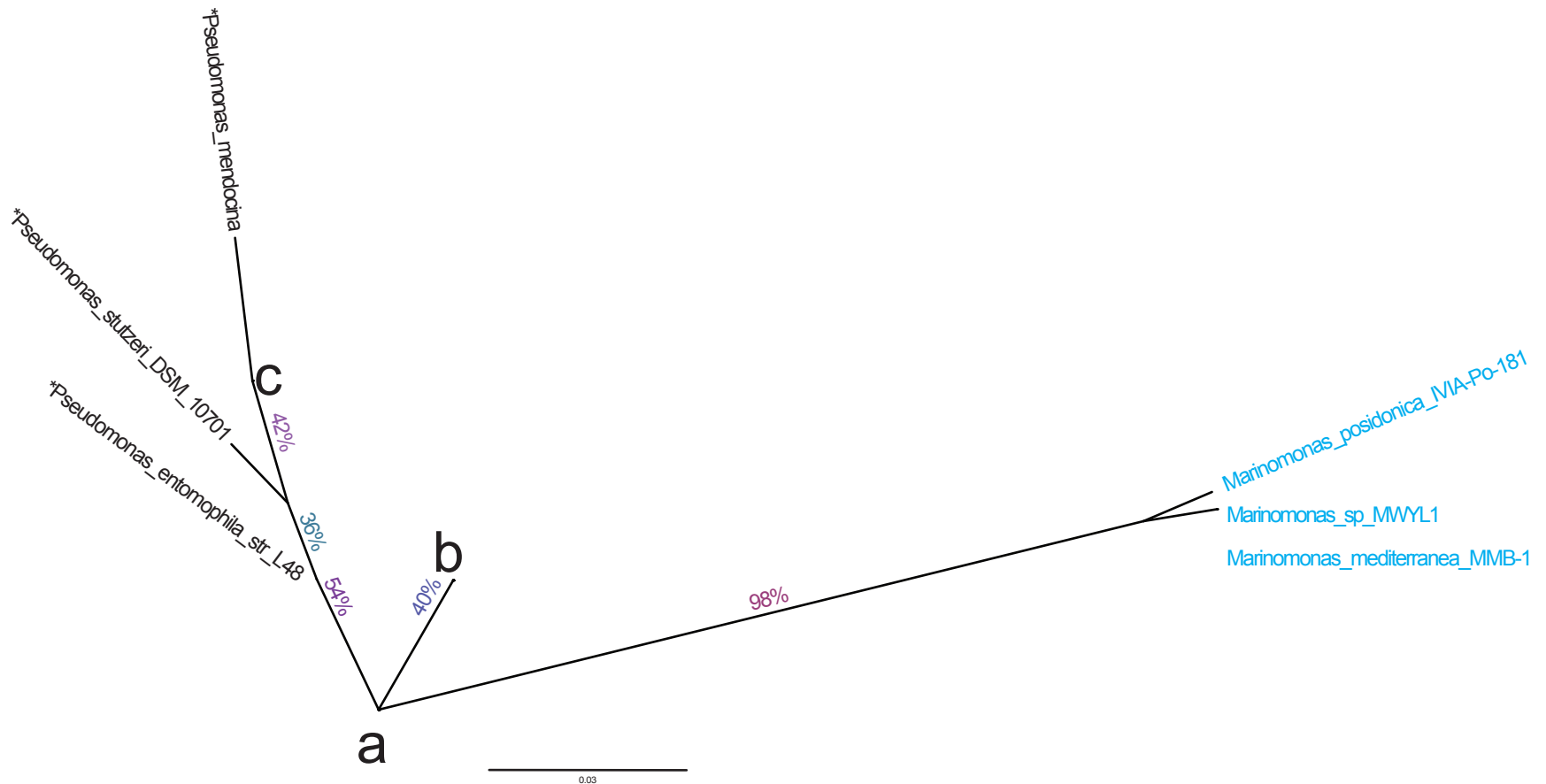


a Cottus_gobio_Bullhead_contig_24818 (fish)
*Pseudomonas poae*_RE*1-1-14
**Pseudomonas fluorescens*
*Pseudomonas stutzeri*_DSM_10701
**Pseudomonas fluorescens*_SBW25
*Pseudomonas*_sp_UW4
SRR20315.825397602
**Pseudomonas fluorescens*_A506

0.0040

D

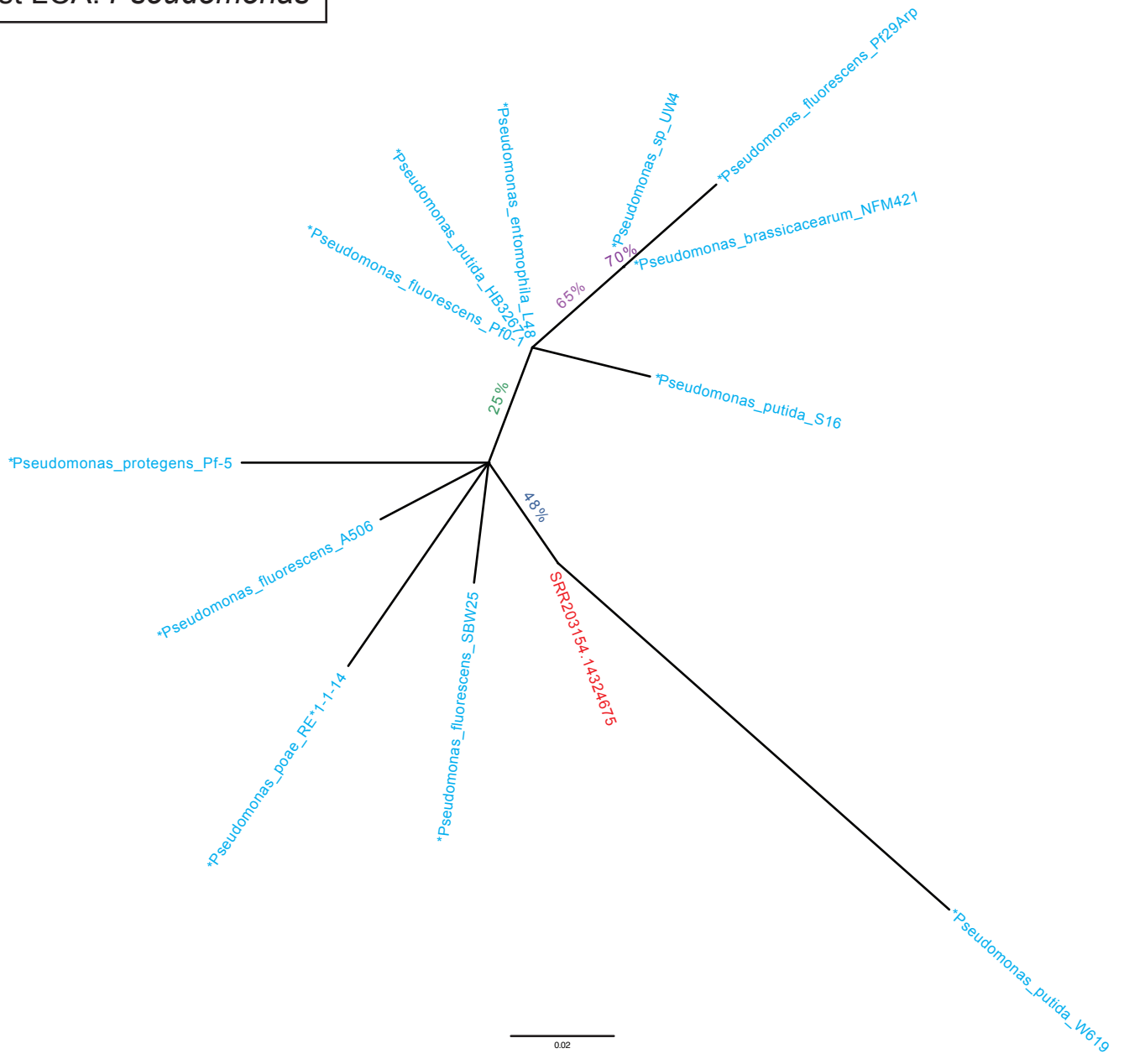
BWA LCA: *Pseudomonas*
Blast LCA: *Pseudomonas*



a	<ul style="list-style-type: none">*<i>Pseudomonas_syringae_pv_syringae_B728a</i>*<i>Pseudomonas_syringae_pv_syringae_strain_UMAF0158</i>*<i>Pseudomonas_putida_GB-1</i>*<i>Pseudomonas_putida_W619</i>*<i>Pseudomonas_fluorescens_SBW25</i>*<i>Pseudomonas_fluorescens_Pf0-1</i>*<i>Pseudomonas_putida_BIRD-1</i>*<i>Pseudomonas_putida_S16</i>*<i>Pseudomonas_fluorescens_F113</i>*<i>Pseudomonas_fluorescens_A506</i>*<i>Pseudomonas_putida_ND6</i>*<i>Pseudomonas_putida_DOT-T1E</i>*<i>Pseudomonas_sp_UW4</i>*<i>Pseudomonas_putida_HB3267</i>*<i>Pseudomonas_poaie_RE-1-1-14</i>*<i>Pseudomonas_fluorescens_Pf29Arp</i>*<i>Pseudomonas_putida_KT2440</i>*<i>Pseudomonas_syringae_pv_tomato_str_DC3000</i>*<i>Pseudomonas_syringae_pv_phaseolicola_1448A</i>*<i>Pseudomonas_protegens_Pf-5</i>*<i>Pseudomonas_putida_F1</i>*<i>Pseudomonas_brassicacearum_NFM421</i>SRR06183721207268	b	<ul style="list-style-type: none">*<i>Pseudomonas_perfectomarina</i>*<i>Pseudomonas_stutzeri</i>*<i>Pseudomonas_stutzeri_A1501</i>*<i>Pseudomonas_stutzeri_CCUG_29243</i>*<i>Pseudomonas_stutzeri_RCH2</i>
		c	<ul style="list-style-type: none">*<i>Pseudomonas_stutzeri_DSM_4166</i>*<i>Pseudomonas_mendocina_NK-01</i>*<i>Pseudomonas_stutzeri_ATCC_17588</i>*<i>Pseudomonas_fulva_12-X</i>

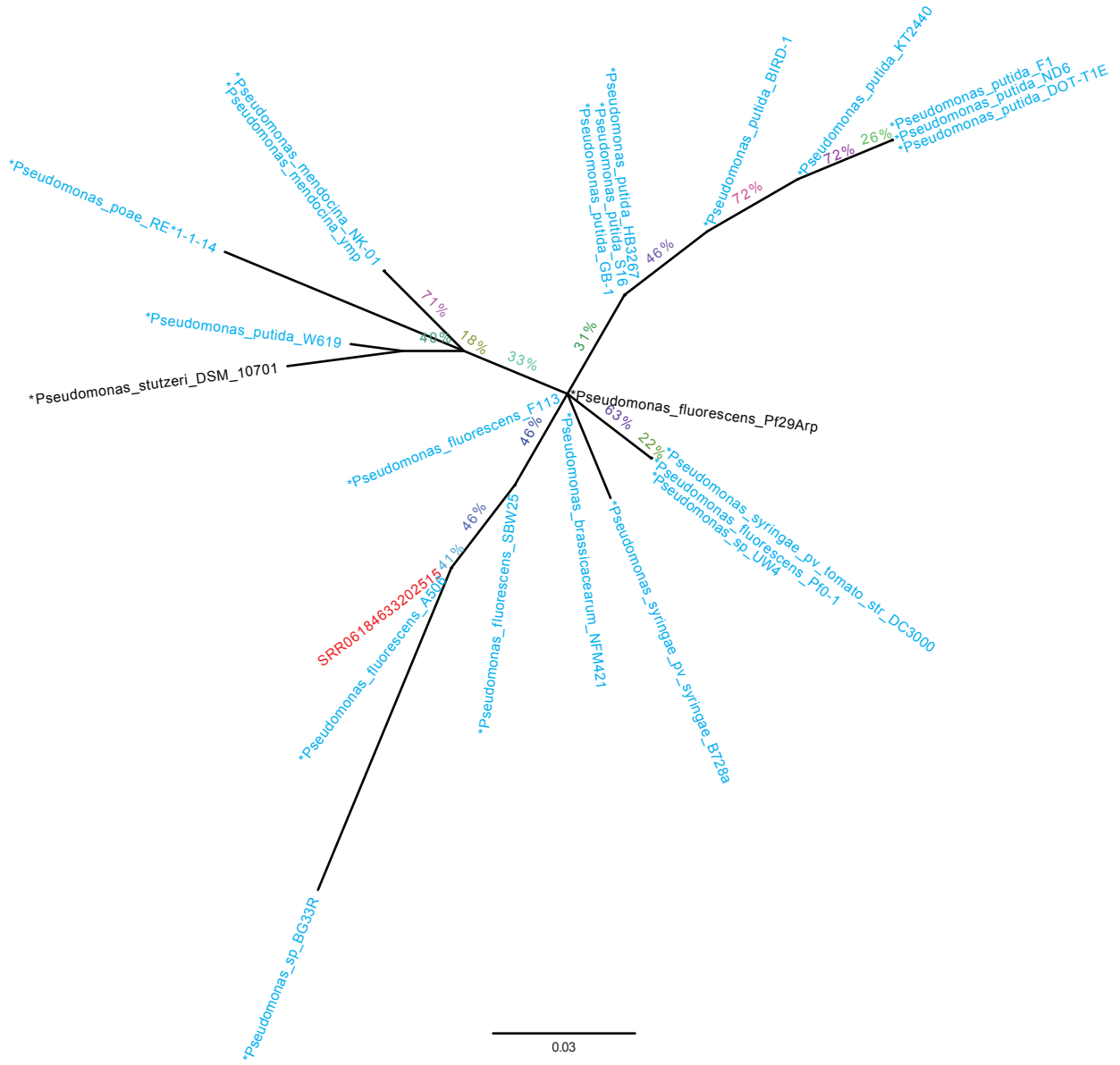
E

BWA LCA: *Pseudomonas*
Blast LCA: *Pseudomonas*



F

BWA LCA: *Pseudomonas*
Blast LCA: *Pseudomonas*



G

BWA LCA: Pseudomonadaceae
 Blast LCA: *Pseudomonas*

a

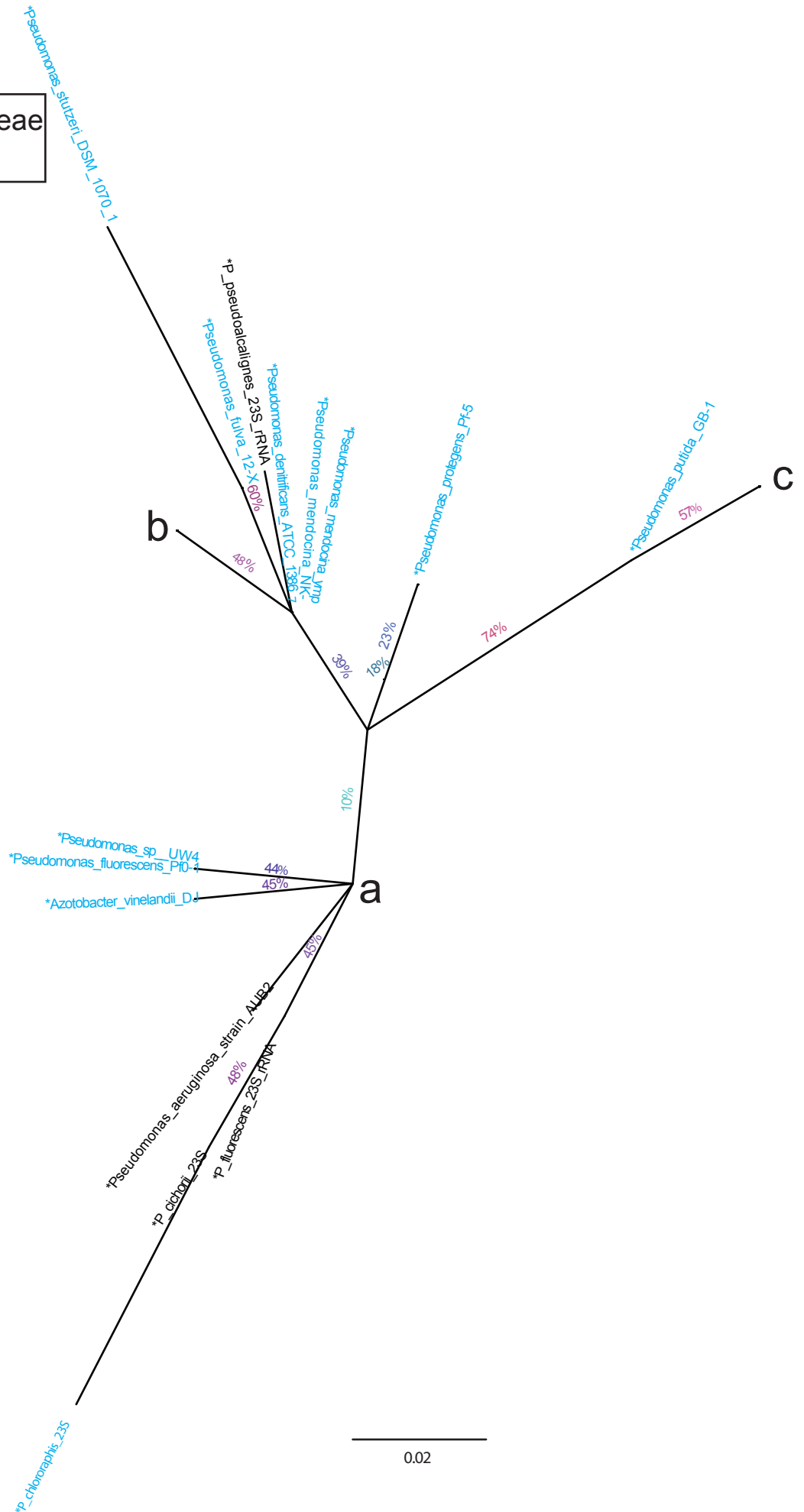
- *Pseudomonas_aeruginosa_23S
- *Pseudomonas_fluorescens_rmB
- *Pseudomonas_fluorescens_rrnC
- *Pseudomonas_syringae_pv_tomato_DC3000
- *Pseudomonas_aeruginosa_DSM_50071T
- *Pseudomonas_syringae_pv_phaseolicola
- *Pseudomonas_syringae_pv_syringae
- *Pseudomonas_aeruginosa_PAO1
- *Pseudomonas_aeruginosa_UCBPP-PA14
- *Pseudomonas_aeruginosa_PA7
- *Pseudomonas_aeruginosa_LESB58
- *Pseudomonas_fluorescens_SBW25
- *Pseudomonas_aeruginosa_DB3
- *Pseudomonas_brassicacearum
- *Pseudomonas_aeruginosa_NCGM2_S1
- *Pseudomonas_fluorescens_F113
- *Pseudomonas_fluorescens_A506
- Spodoptera_exigua_comp1146_c0_seq1 (moth)
- *Pseudomonas_brassicacearum_NFM421
- SRR203141.1048355
- *Pseudomonas_syringae_pv_tomato
- *Pseudomonas_poaе_RE*1-1-14
- *Pseudomonas_aeruginosa_M18
- *Pseudomonas_aeruginosa_DK2
- *Pseudomonas_fluorescens_Pf29Arp
- *Pseudomonas_aeruginosa_B136-33

b

- *Pseudomonas_perfectomarina_23S
- *P_stutzeri_23S_rRNA_gene
- *Pseudomonas_stutzeri
- *Pseudomonas_stutzeri_A1501-1
- *Pseudomonas_stutzeri_DSM_4166
- *Pseudomonas_stutzeri_ATCC_17588
- *Pseudomonas_stutzeri_CCUG_29243
- *Pseudomonas_stutzeri_RCH2
- *Pseudomonas_stutzeri_A1501

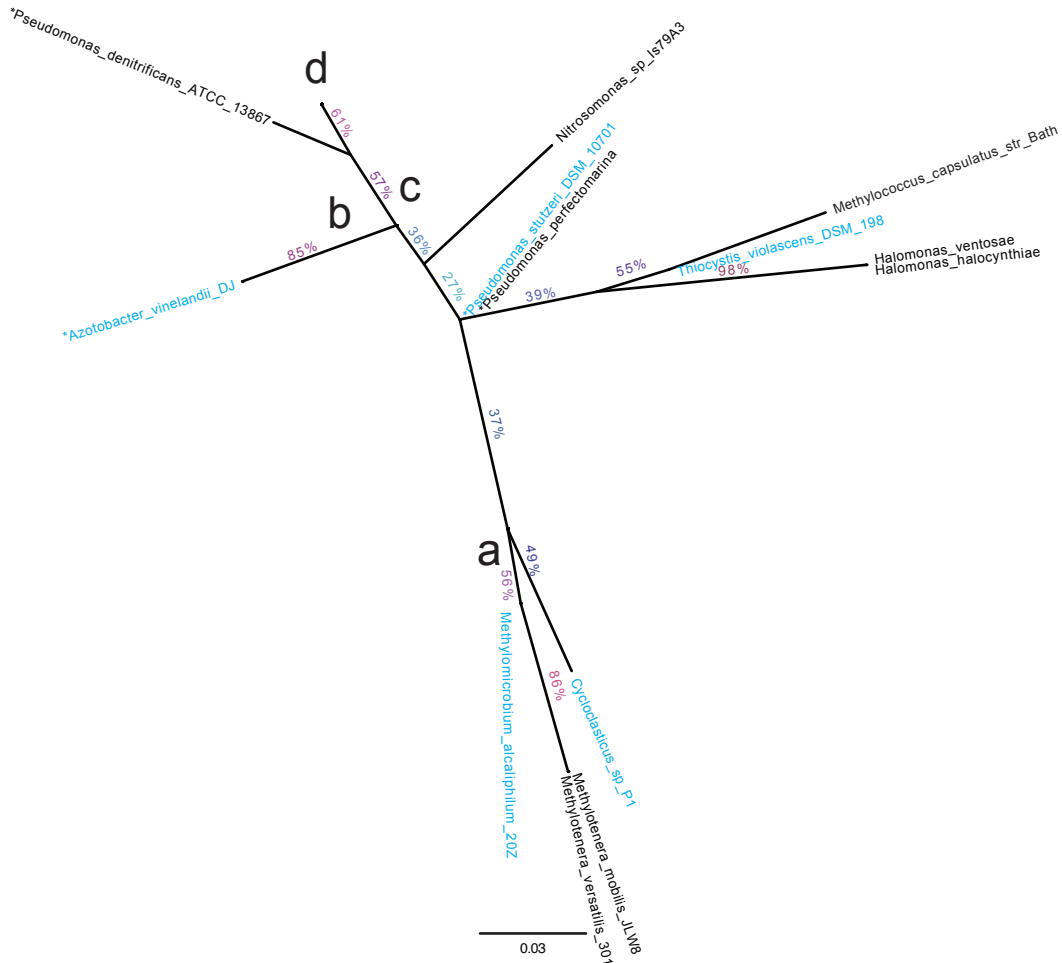
c

- *Pseudomonas_putida_KT2440
- Rubrobacter_radiotolerans_23S
- *Pseudomonas_entomophila_L48
- *Pseudomonas_putida_F1
- *Pseudomonas_putida_W619
- *Pseudomonas_putida_BIRD-1
- *Pseudomonas_putida_S16
- *Pseudomonas_putida_ND6
- *Pseudomonas_putida_DOT-T1E
- *Pseudomonas_putida_HB3267



H

BWA LCA: Pseudomonadaceae
 Blast LCA: Cellular Organism



a

- SRR061837.18908151**
- *Pseudomonas_brassicacearum_NFM421
 - *Pseudomonas_stutzeri_A1501
 - *Pseudomonas_protegens_Pf-5
 - *Pseudomonas_syringae_pv_phaseolicola_1448A
 - *Pseudomonas_syringae_pv_tomato_str_DC3000
 - *Pseudomonas_fluorescens_Pf29Arp
 - *Pseudomonas_poaie_RE*1-1-14
 - *Pseudomonas_stutzeri_RCH2
 - *Pseudomonas_sp_UW4
 - *Pseudomonas_stutzeri_CCUG_29243
 - *Pseudomonas_stutzeri_23S
 - *Pseudomonas_fluorescens
 - *Pseudomonas_syringae_pv_syringae_B728a
 - *Pseudomonas_fluorescens_SBW25
 - *Pseudomonas_fluorescens_Pf0-1
 - Albugo_laibachii_Nc14 (oomycete)
 - *Pseudomonas_stutzeri_DSM_4166
 - Albugo_laibachii_Alem1 (oomycete)
 - *Pseudomonas_stutzeri_ATCC_17588
 - *Pseudomonas_fluorescens_F113
 - *Pseudomonas_fluorescens_A506

b

- *Pseudomonas_entomophila_str_L48
- *Pseudomonas_mendocina_NK-01
- *Pseudomonas_mendocina_ypm
- *Pseudomonas_fulva_12-X
- *Pseudomonas_putida_F1
- *Pseudomonas_putida_KT2440

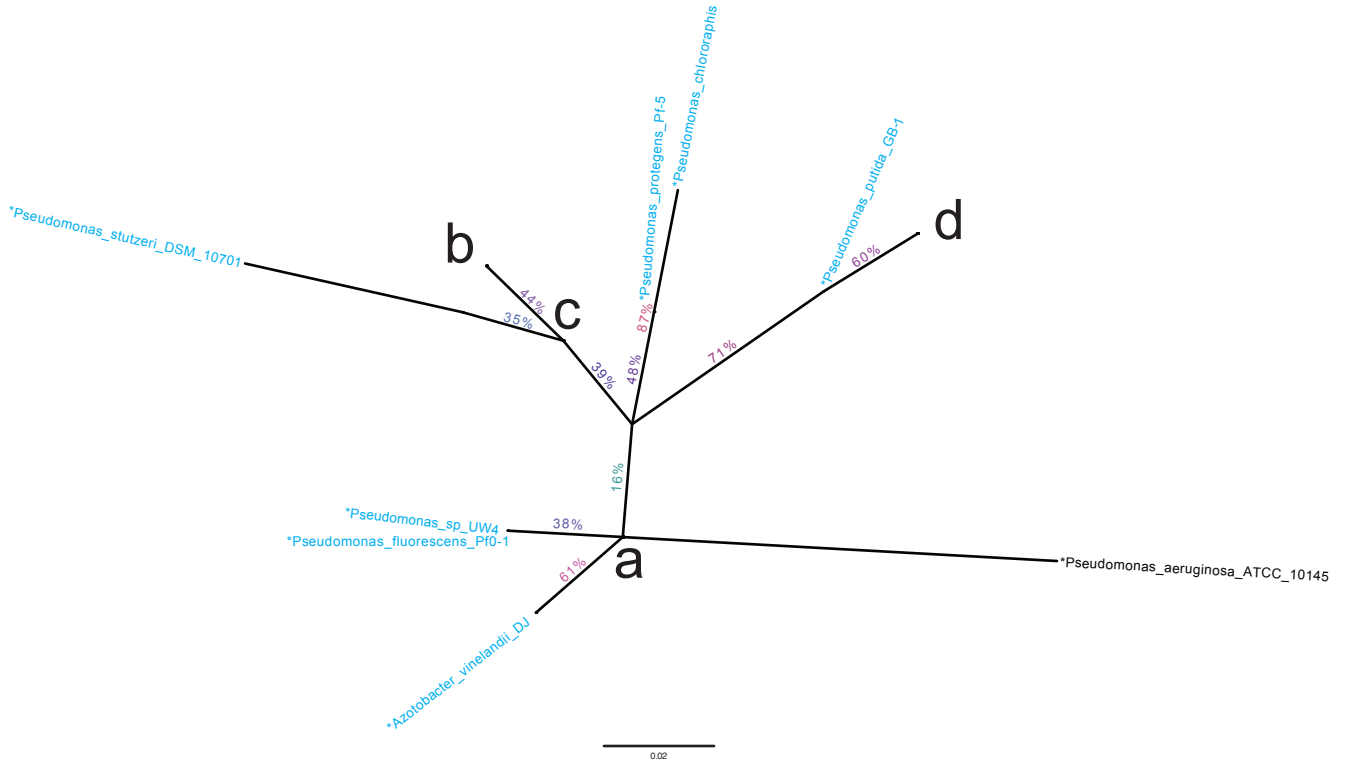
c

- *Pseudomonas_putida_HB3267
- *Pseudomonas_putida_DOT-T1E
- *Pseudomonas_putida_ND6
- *Pseudomonas_putida_S16
- *Pseudomonas_putida_BIRD-1
- *Pseudomonas_putida_W619
- *Pseudomonas_putida_GB-1

d

- *Pseudomonas_aeruginosa
- *Pseudomonas_aeruginosa_strain_ATCC_27814
- *Pseudomonas_aeruginosa_UCBPP-PA14
- *Pseudomonas_aeruginosa_PA7
- *Pseudomonas_aeruginosa_LESB58
- *Pseudomonas_aeruginosa_strain_DB3
- *Pseudomonas_aeruginosa_strain_AUB2
- *Pseudomonas_aeruginosa_M18
- *Pseudomonas_aeruginosa_NCGM2S1
- *Pseudomonas_aeruginosa_DK2
- *Pseudomonas_aeruginosa_PAO1
- *Pseudomonas_aeruginosa_B136-33

BWA LCA: Pseudomonadaceae
Blast LCA: Pseudomonadaceae



- a**
- *Pseudomonas_aeruginosa_AUB2
 - *Pseudomonas_fluorescens
 - *Pseudomonas_aeruginosa
 - *Pseudomonas_aeruginosa_UCBPP-PA14
 - *Pseudomonas_aeruginosa_DB3
 - *Pseudomonas_fluorescens_A506
 - *Pseudomonas_aeruginosa_DK2
 - *Pseudomonas_fluorescens_F113
 - *Pseudomonas_fluorescens_SBW25
 - *Pseudomonas_syringae_pv_syringae_UMAF0158
 - *Pseudomonas_syringae_pv_syringae_B728a
 - *Pseudomonas_cichori
 - *Pseudomonas_fluorescens
 - *Pseudomonas_poae_RE*1-1-14
 - SRR061897.14995429
 - *Pseudomonas_aeruginosa_B136-33
 - *Pseudomonas_brassicacearum_NFM421
 - *Pseudomonas_syringae_pv_phaseolicola_1448A
 - *Pseudomonas_syringae_pv_tomato_str_DC3000
 - *Pseudomonas_aeruginosa_PAO1

- b**
- *Pseudomonas_fulva_12-X
 - *Pseudomonas_perfectomarina
 - *Pseudomonas_stutzeri
 - *Pseudomonas_stutzeri_DSM_4166
 - *Pseudomonas_stutzeri_ATCC_17588
 - *Pseudomonas_stutzeri_CCUG_29243
 - *Pseudomonas_stutzeri_RCH2
 - *Pseudomonas_stutzeri_A1501
- c**
- *Pseudomonas_mendocina_NK-01
 - *Pseudomonas_mendocina_ymp
 - *Pseudomonas_pseudoalcaligenes
 - *Pseudomonas_denitrificans_ATCC_13867

- d**
- Rubrobacter_radiotolerans
 - *Pseudomonas_entomophila_str_L48
 - *Pseudomonas_putida_W619
 - *Pseudomonas_putida_BIRD-1
 - *Pseudomonas_putida_S16
 - *Pseudomonas_putida_ND6
 - *Pseudomonas_putida_DOT-T1E
 - *Pseudomonas_putida_HB3267
 - *Pseudomonas_putida_KT2440
 - *Pseudomonas_putida_F1

