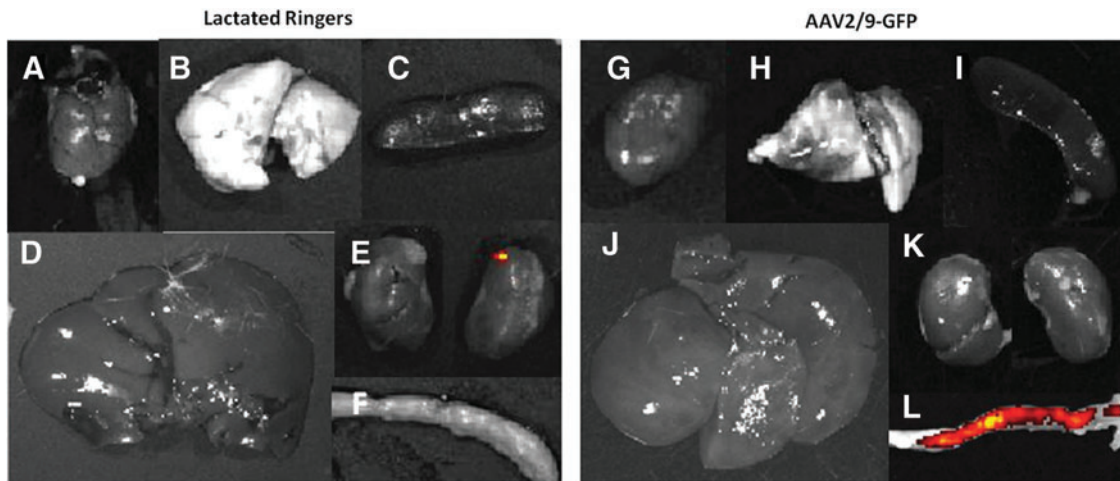


Supplementary Data



SUPPLEMENTARY FIG. S1. Vector biodistribution by GFP bi-photonic imaging of major organs. (A–F) Lactated Ringers or (G–L) AAV2/9-GFP (10^{11} vg/gland) was retroorbitally administered to both submandibular glands ($n=3$ each). After a 5-week interval, the heart (A and G), lung (B and H), spleen (C and I), liver (D and J), kidneys (E and K), and intestines (F and L) were imaged for GFP epifluorescence using Xenogen IVIS imager.