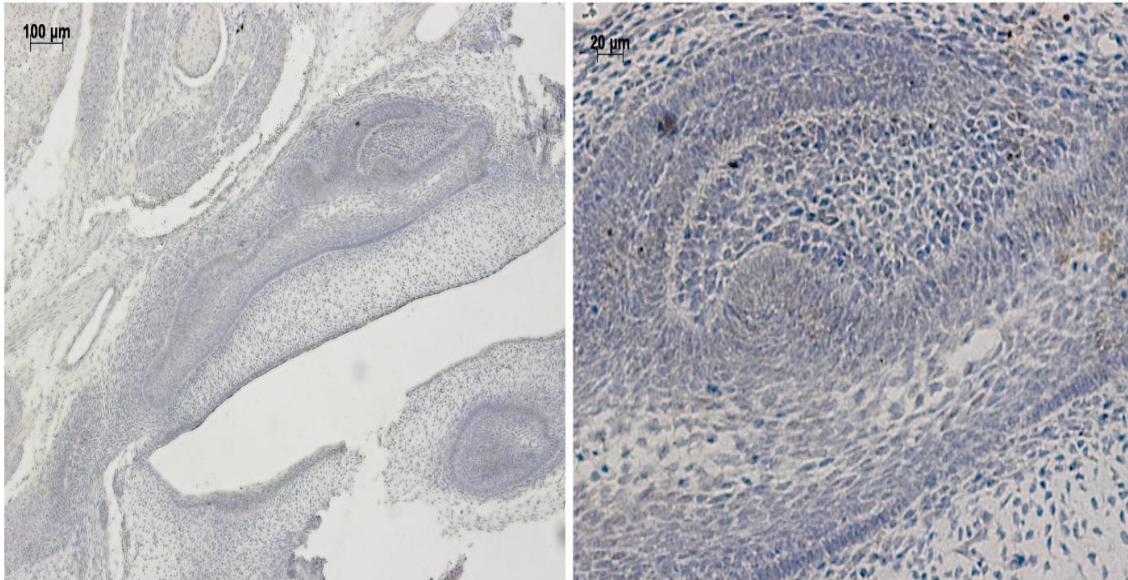


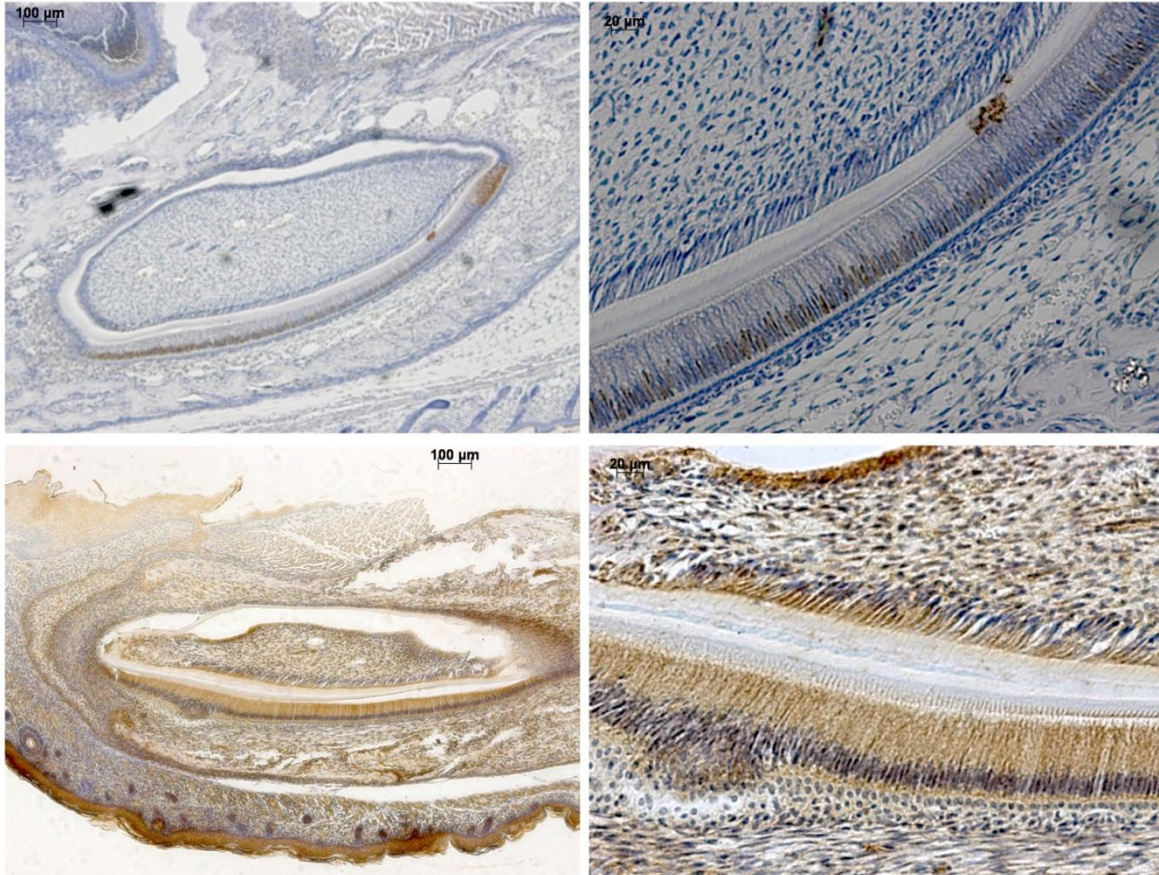
Supplementary data 1



Supplementary data 1: E16.5 mouse tooth germ was sectioned and immunostained with NUMB antibody. No NUMB expression was detected in these tooth germs. The right panel shows a higher resolution of the tooth germ.

Day 5 Mouse Lower Incisor

Activated Notch 1 Numb



Supplementary data 2: Postnatal day 5 incisors were sectioned and immunostained for NUMB and activated Notch 1 antibodies, Activated Notch 1 expression was detected in ameloblasts, odontoblasts and dental pulp cells. Our results indicates both activated Notch 1 protein and NUMB protein are expressed in ameloblasts.