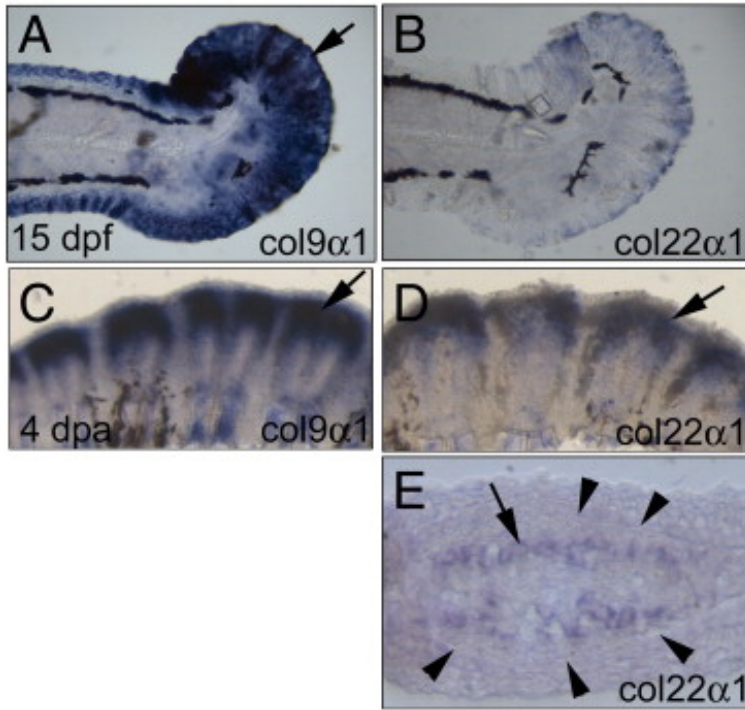


CLOSE



Supplementary Fig. S2. Expression patterns of *col9α1* and *col22α1* in the fins. (A) *col9α1* was highly expressed in the 15-day post-fertilization (dpf) fin (arrow). (B) *col22α1* was also weakly expressed in the 15-dpf fin. (C) In a 4-day post-amputation (dpa) regenerating fin, *col9α1* was expressed in large amounts in the regenerating fin (arrow). (D) The 4-dpa regenerating fin also expressed high levels of *col22α1* but in a relatively smaller domain (arrow). (E) Cross-section of (D) revealing that *col22α1* was expressed in osteoblasts located inside the fin ray. The number of cells expressing *col22α1* (arrows) was apparently smaller than that expressing *col9α1* (compare with Fig. 3H). Arrowheads denote the thick basement membrane (seen as a line at this magnification) where the future fin ray will form in the regenerating fin.