

Supporting Information

Pasek et al. 10.1073/pnas.1303904110

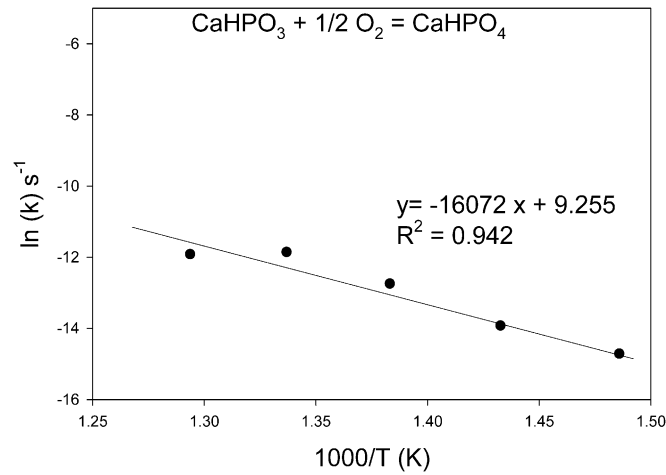


Fig. S1. Activation energy of oxidation reaction of CaHPO₃ is established from the slope of the data in an Arrhenius plot.

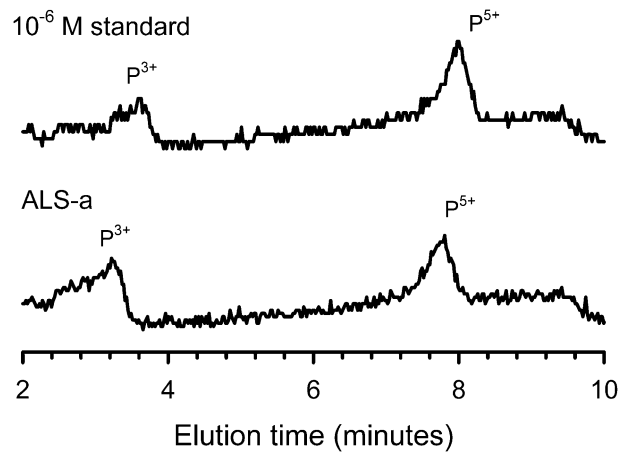


Fig. S2. Chromatogram showing separation of P species within a standard (10⁻⁶ M solution) of each of hypophosphite (elution time ~1.1 min not shown), phosphite, and phosphate, compared with extract of Coonterunah carbonate rock (sample ALS-A) with peaks assigned to phosphite and phosphate.

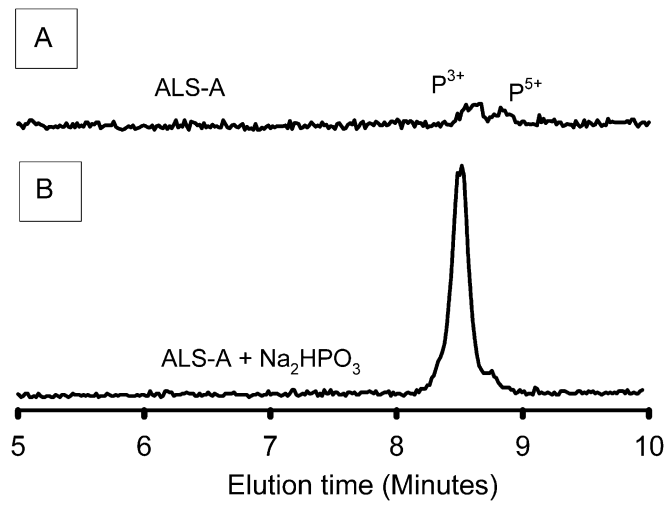


Fig. S3. Chromatogram showing extract of carbonate rock with peaks assigned to phosphite and phosphate (A) and with addition of a 10^{-5} M sodium phosphite enhancing the phosphate peak (B).