

SUPPLEMENTARY DATA

FIG. S1. Map of India showing locations where *Mimosa* nodules and/or rhizosphere soil were collected, and from which species. The main symbiont types are also indicated.

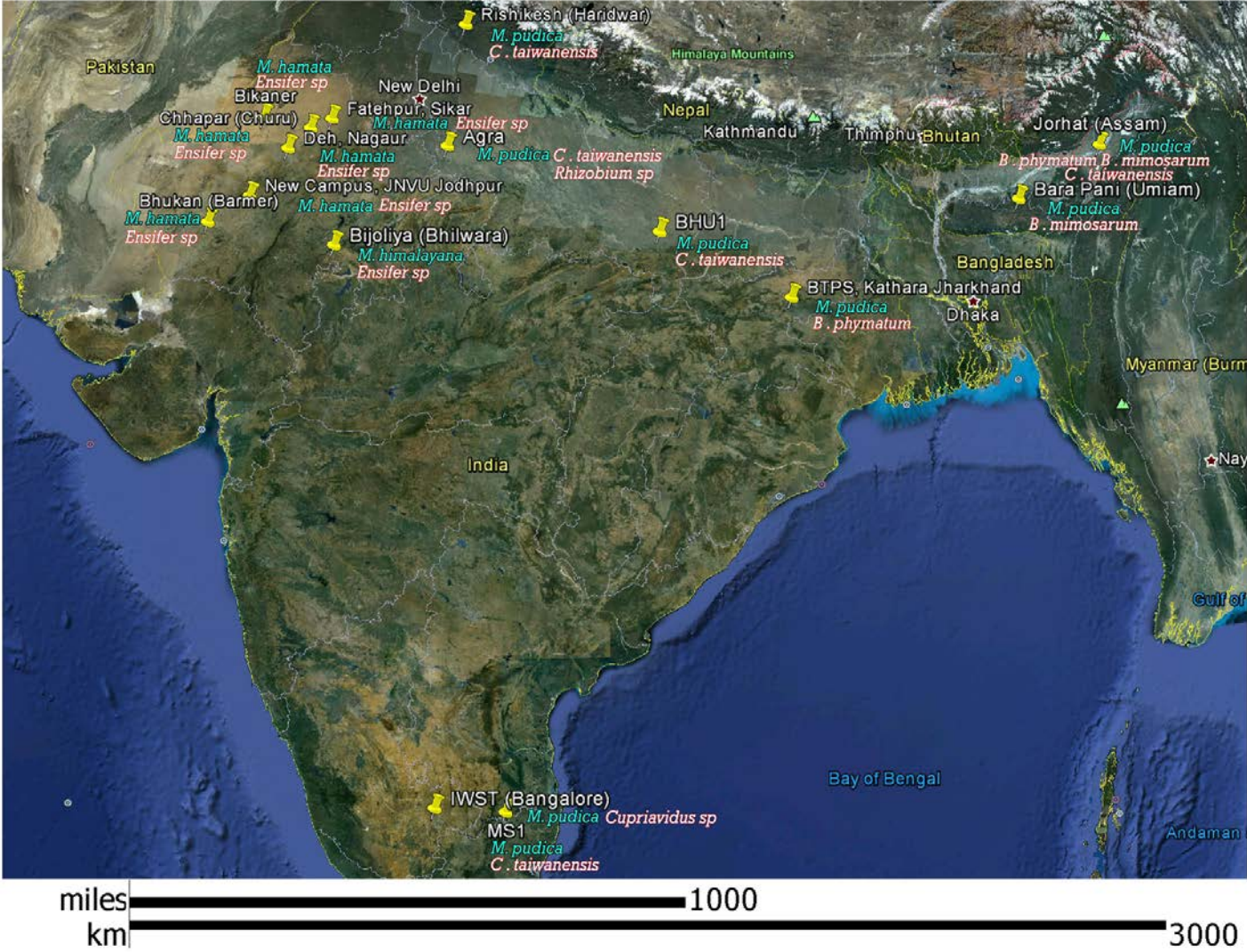


FIG. S2. Immunogold labelled sections of nodules of *Mimosa* spp. sampled from plants collected in the field from various locations in India. The sections were probed with either an antibody raised against *Cupriavidus taiwanensis* LMG19424^T (Ct) or with one against *Burkholderia phymatum* STM815^T (Bp). (A) *Mimosa hamata* nodule (Jodhpur, RJ) probed with Ct. **No reaction.** (B) *M. himalayana* nodule inoculated with *B. phymatum* STM815^T, and then probed with Bp. **Positive reaction.** (C) *M. pudica* nodule (Jodhpur, RJ) probed with Ct. **Positive reaction.** (D) *M. pudica* nodule (Jodhpur, RJ) probed with Bp. **No reaction.** (E) *M. pudica* nodule (Agra, UP) probed with Ct. **Positive reaction.** (F) *M. pudica* nodule (Bokaro, JH) probed with Bp. **Positive reaction.** An arrow indicates the nodule meristem, and the infected, N₂-fixing zone is indicated by * in each case. Bars, 200 μm

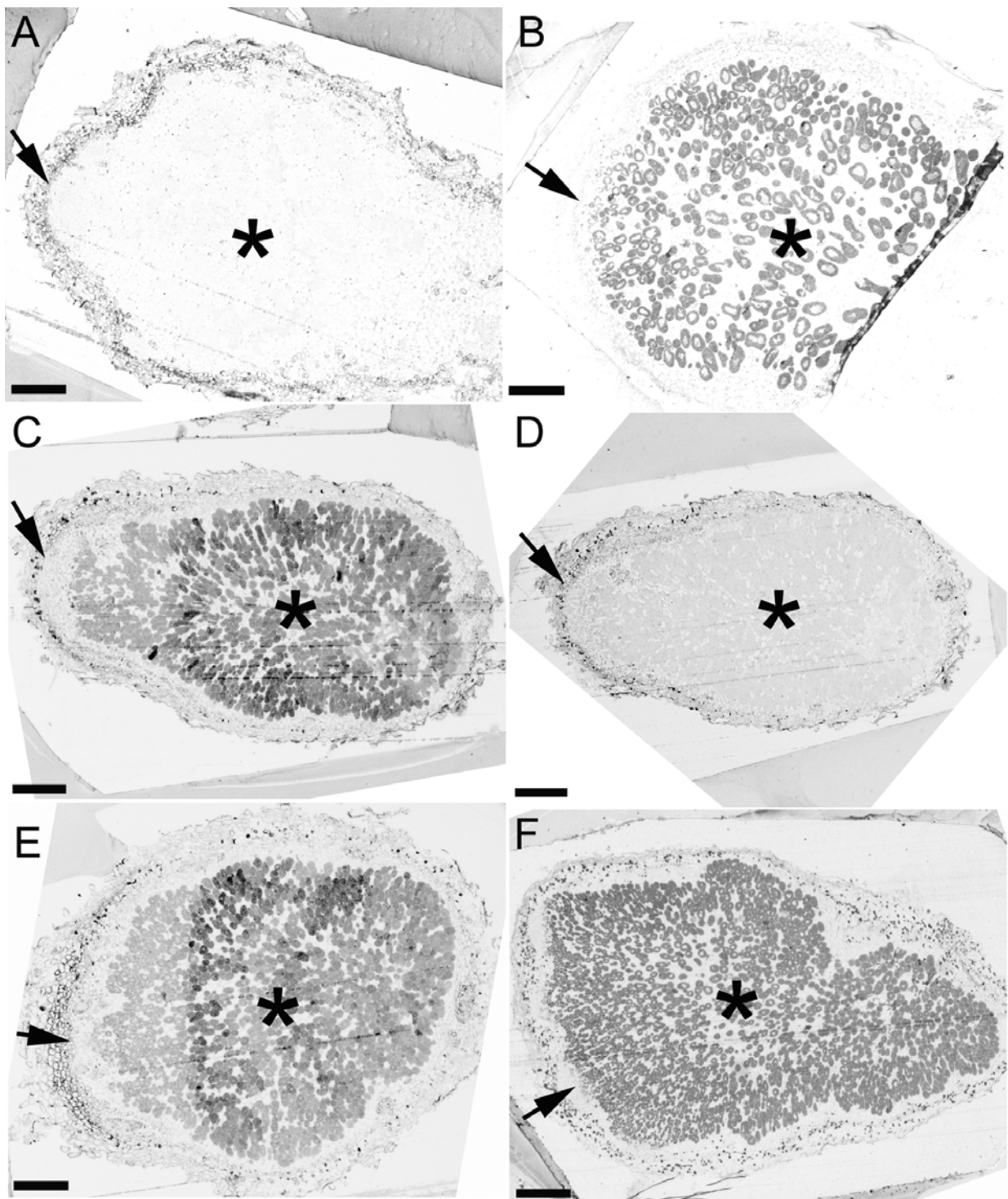


FIG. S3. Cross-inoculation tests with Indian and Mexican rhizobial strains on various *Mimosa* spp. Species/strain combinations are listed from left to right in (A), (C) and (D).
M. hamata + *Ensifer* sp. MHM12 (no nodules), MH37 and MH40 (both nodulated; arrows).
M. himalayana + *Ensifer* sp. MH40 (nodulated; arrows).
M. himalayana + *Rhizobium etli* bv. *mimosae* Mim-1 (nodulated; arrows).
M. affinis + *R. etli* bv. *mimosae* Mim-1 (nodulated; arrow) and *Ensifer* sp. MH37 (nodulated, but ineffective; double arrowhead), and *M. hamata* + *Ensifer* sp. MH37 (nodulated; arrow).
 Nodulation of *M. hamata* by GUS-marked *Cupriavidus* sp. MP3 (*).
 Nodulation of *M. hamata* by GUS-marked *B. phymatum* MP20 (*).
 Bars, 2 cm (A, D); 1 cm (B, C); 500 μ m (E, F)

