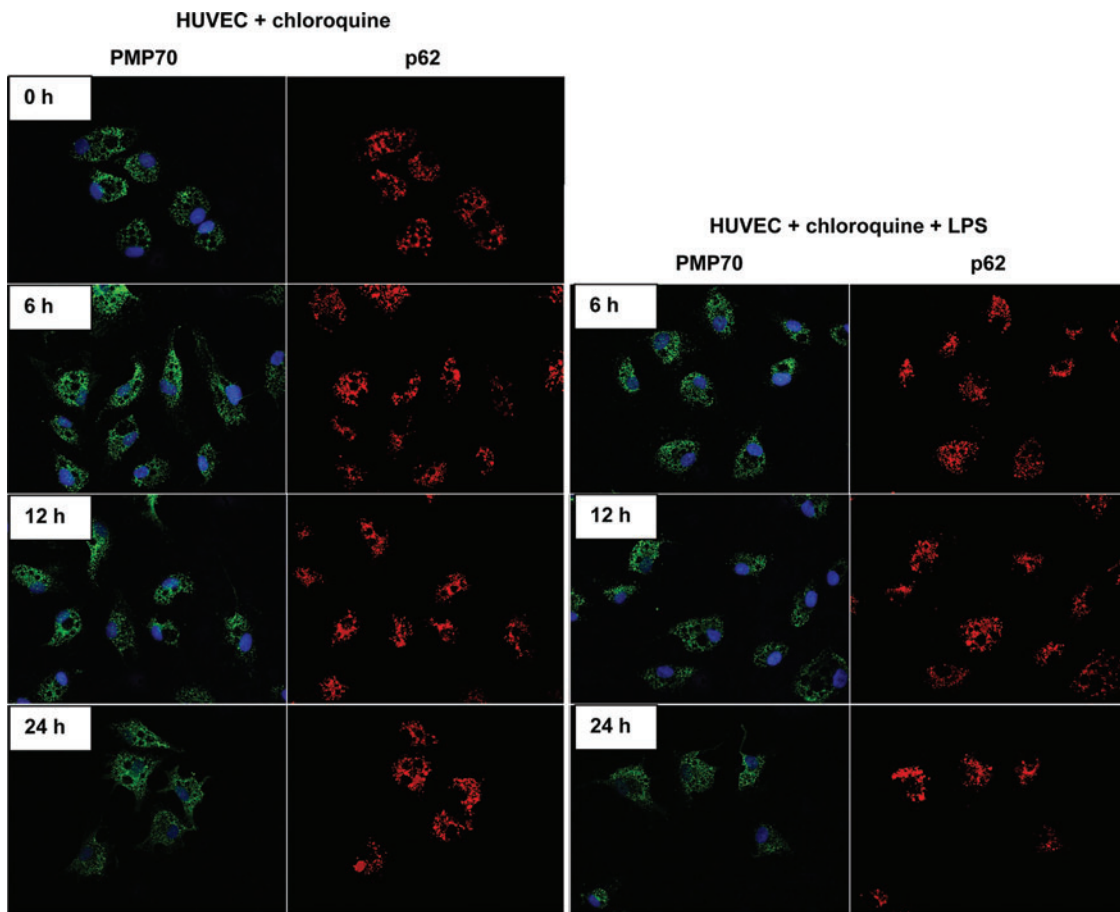
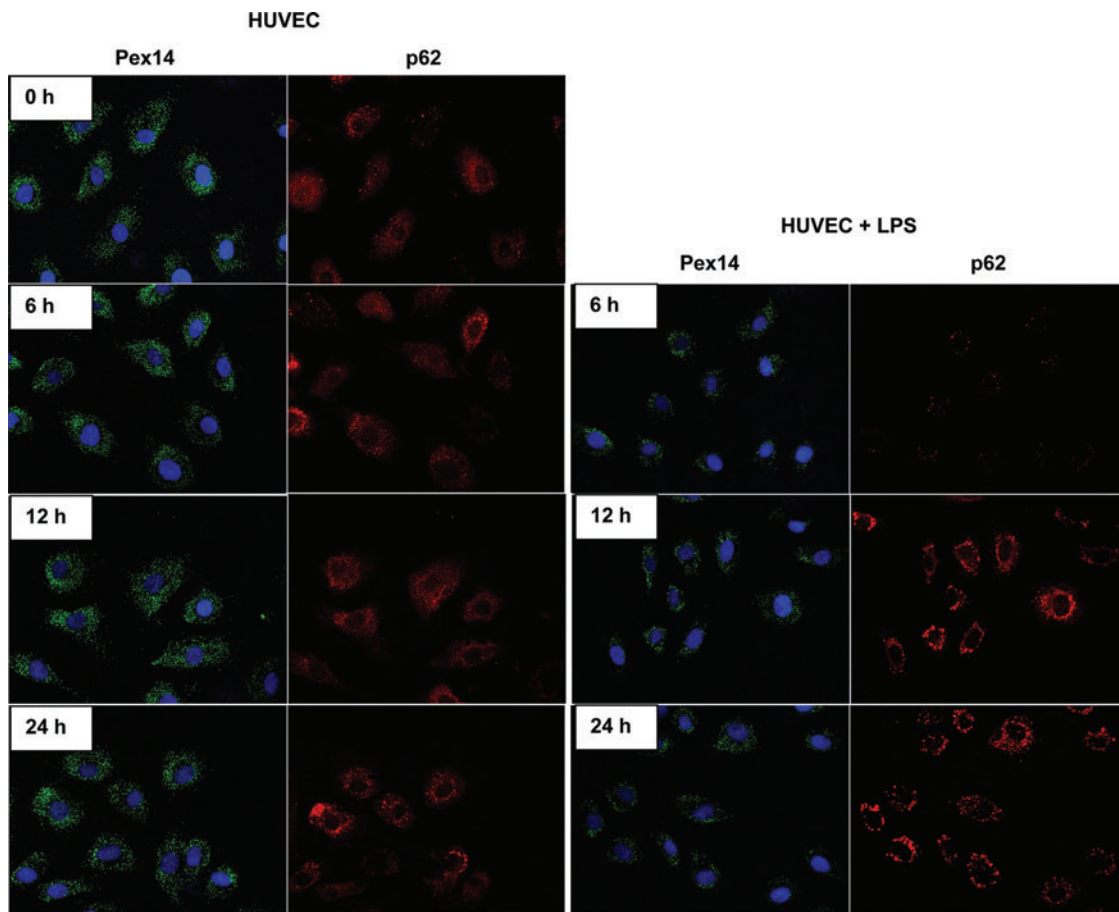


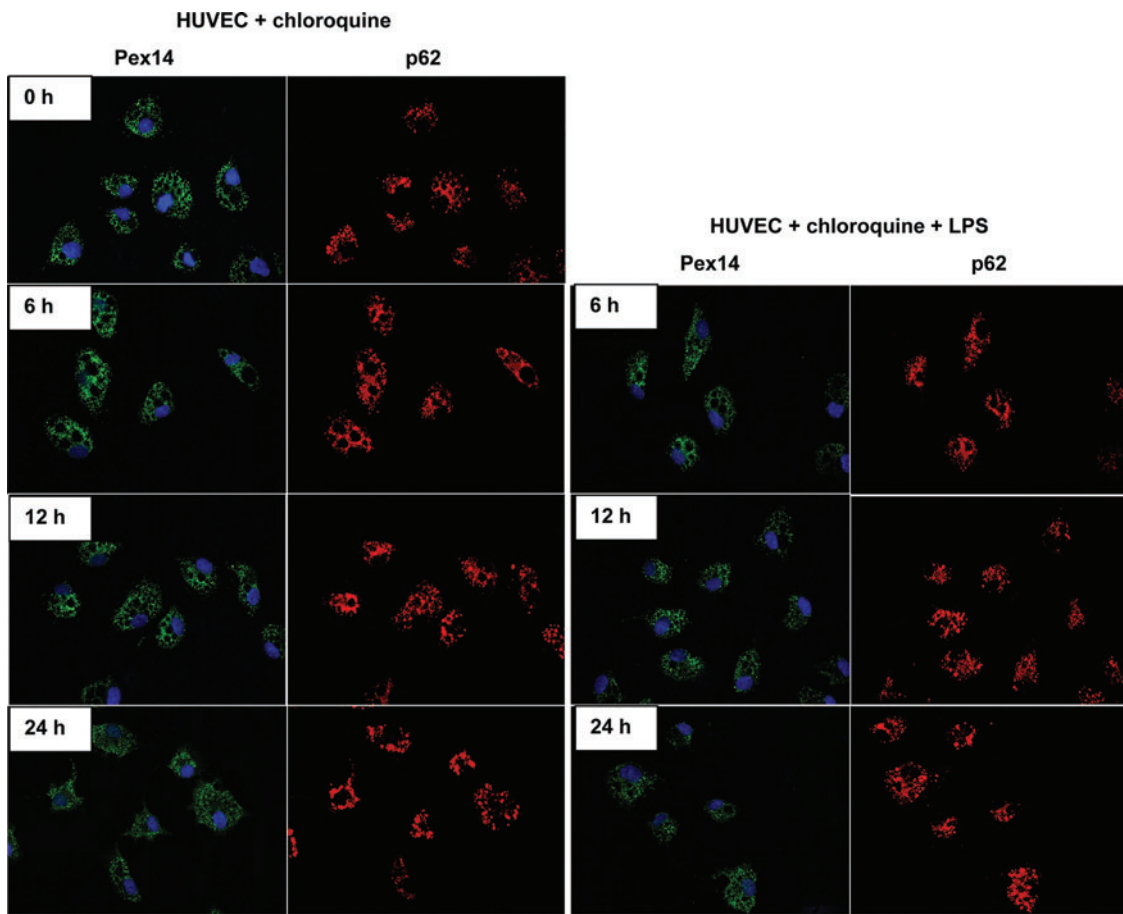
**SUPPLEMENTARY FIG. S7.** Representative images of primary HUVEC stained for PMP70 (green) or Pex14 (green) and p62 (red). Cells were stimulated with 1  $\mu\text{g}/\text{ml}$  lipopolysaccharide (HUVEC + LPS) for 6, 12, and 24 hours. Cells cultured in media without addition of LPS served as a control (HUVEC). Lysosomal dysfunction was induced by addition of 25  $\mu\text{M}$  chloroquine (HUVEC + chloroquine). Magnification, 200 $\times$ .



SUPPLEMENTARY FIG. S7. (Continued).



SUPPLEMENTARY FIG. S7. (Continued).



SUPPLEMENTARY FIG. S7. (Continued).