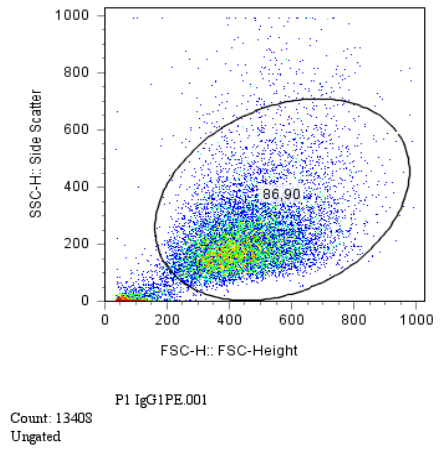


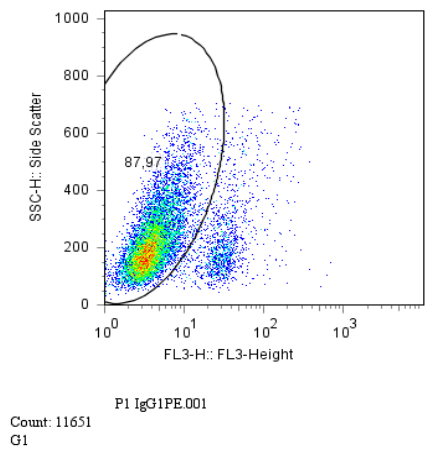
**Supplemental Figure 4**  
Flow cytometry gating strategy

**G1**

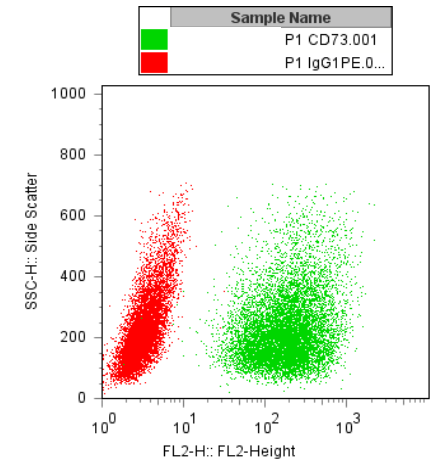
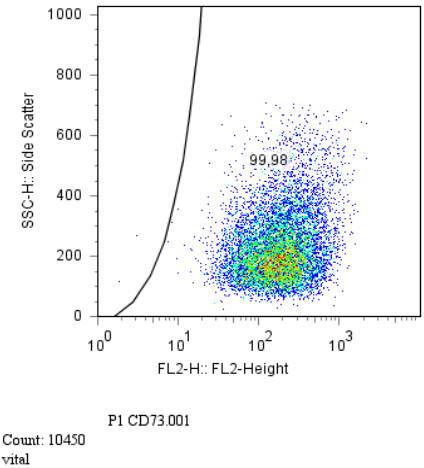
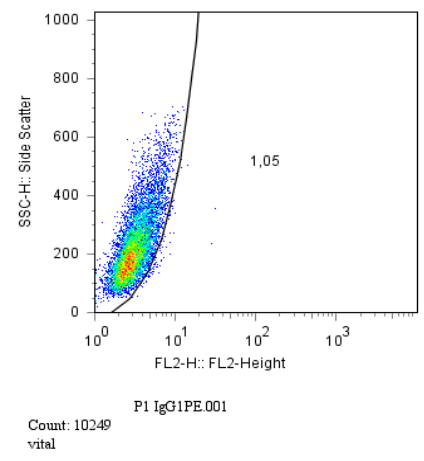


FSC-SSC gating to separate debris from intact cells (G1).

**G2**



Exclusion of dead cells by uptake of 7-AAD (G2 on 7-AAD negative [= live] cells).



Analysis of percentage of antigen positive cells and fluorescence intensity. For compensation of unspecific antibody binding, the positivity of the respective matched isotype control was subtracted from all samples.