

Figure S-1: General flow chart of peak detection algorithm for each voltogram with identification of the corresponding peak from the chromatographic dimension

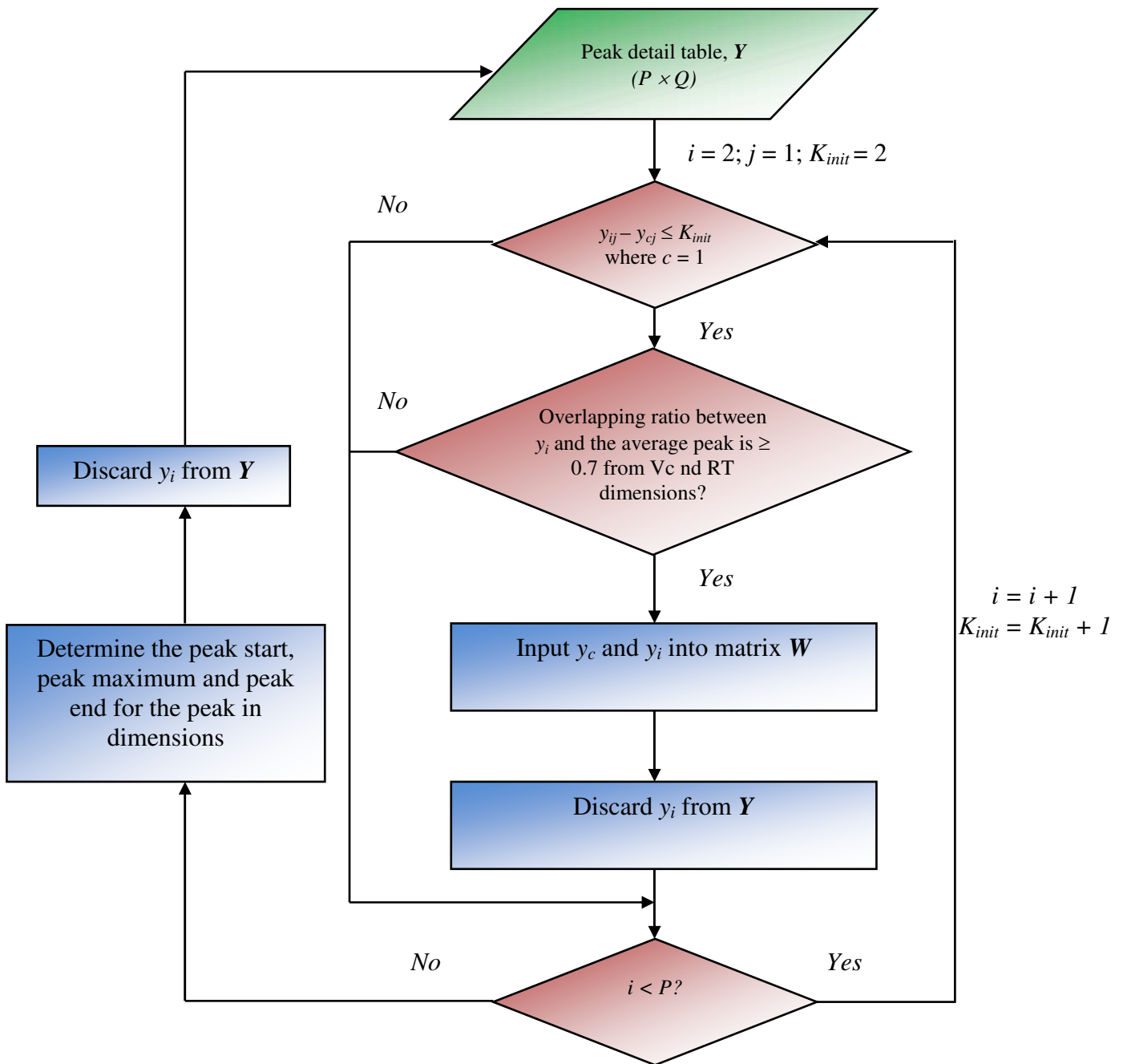


Figure S-2: Peak merging algorithm

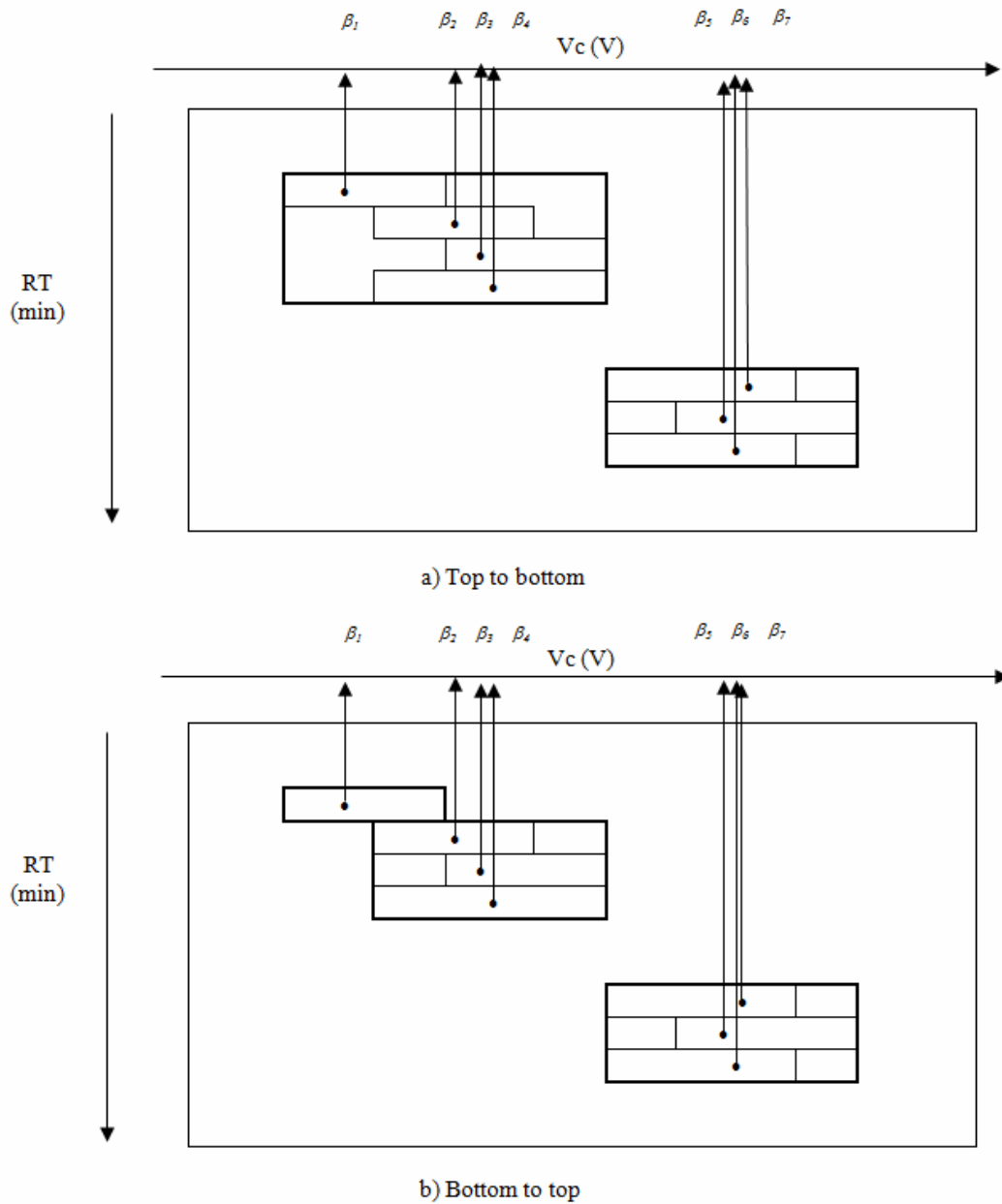


Figure S-3: Example illustrating the 2D features determined in a sample with the peak detail table examined from a) top to bottom and b) bottom to top direction. The dots refer to the peak maximum and the bolded lines indicate the peak border