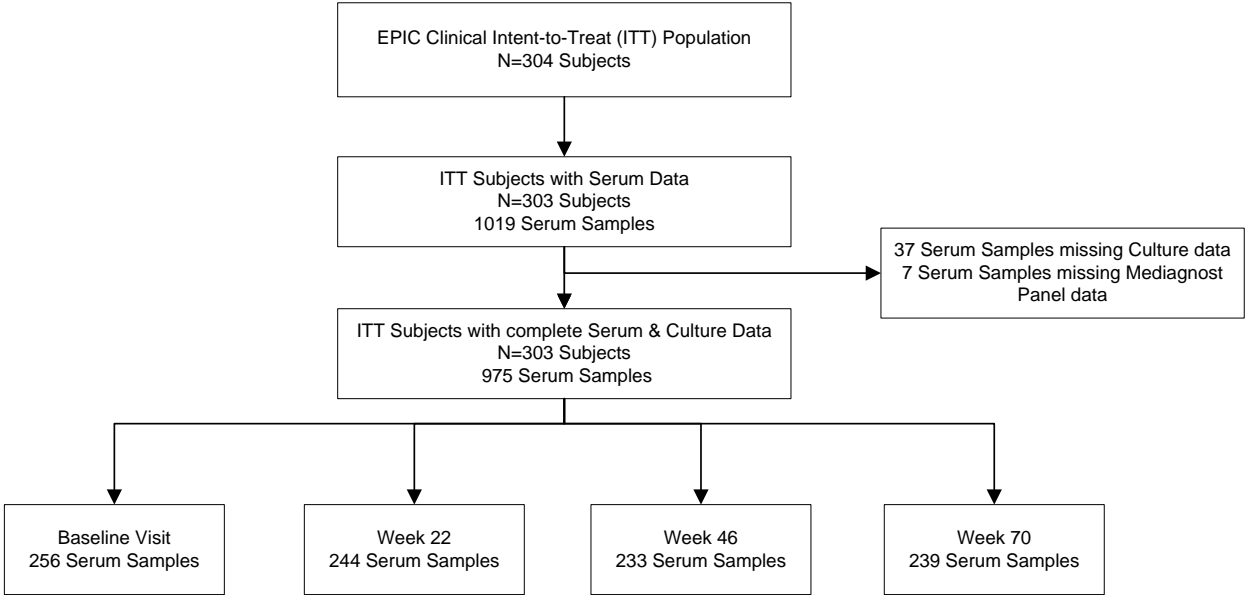
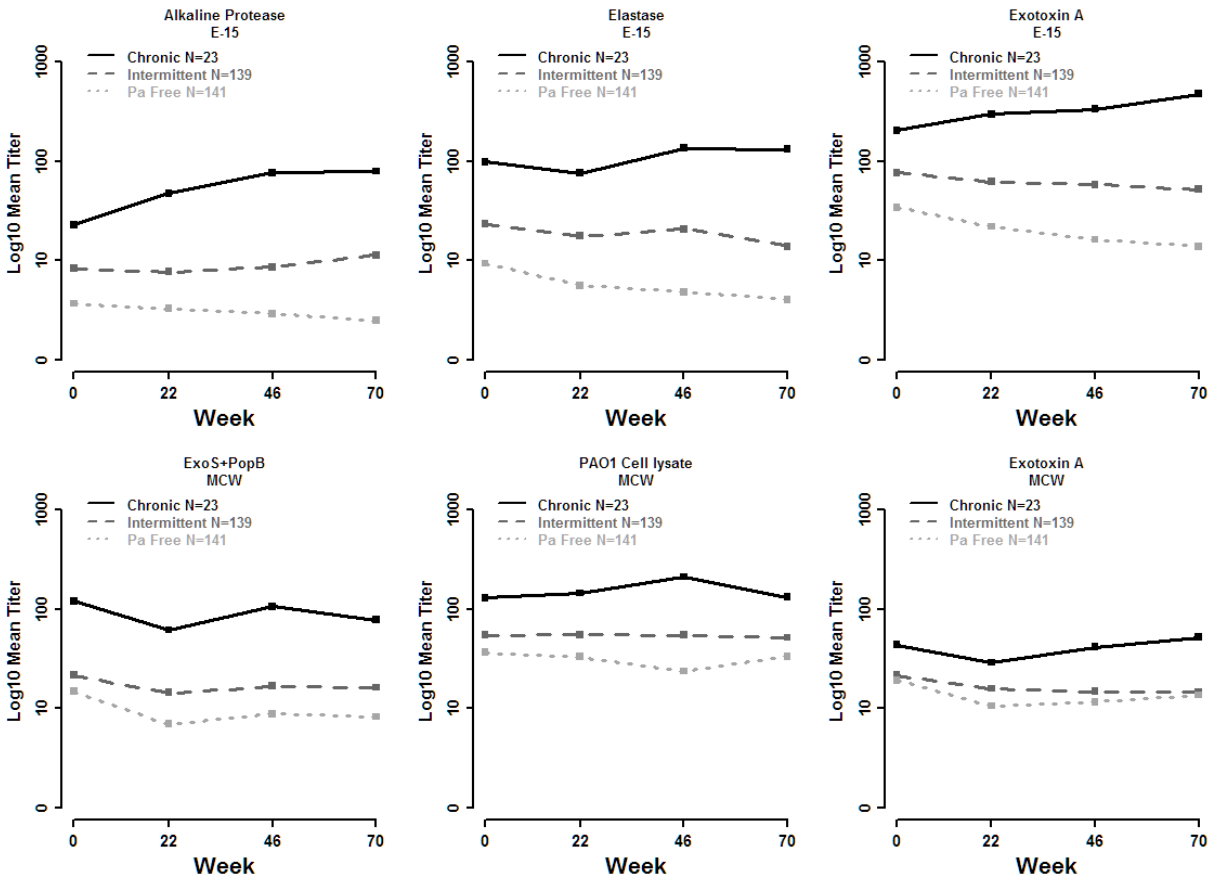


Supplement Figure 1.



Supplement Figure 1. CONSORT diagram showing number of subjects with available serology and culture. Of the 975 serum samples, three serum samples occurred at withdrawal visits (1 at week 34, 2 at week 58).

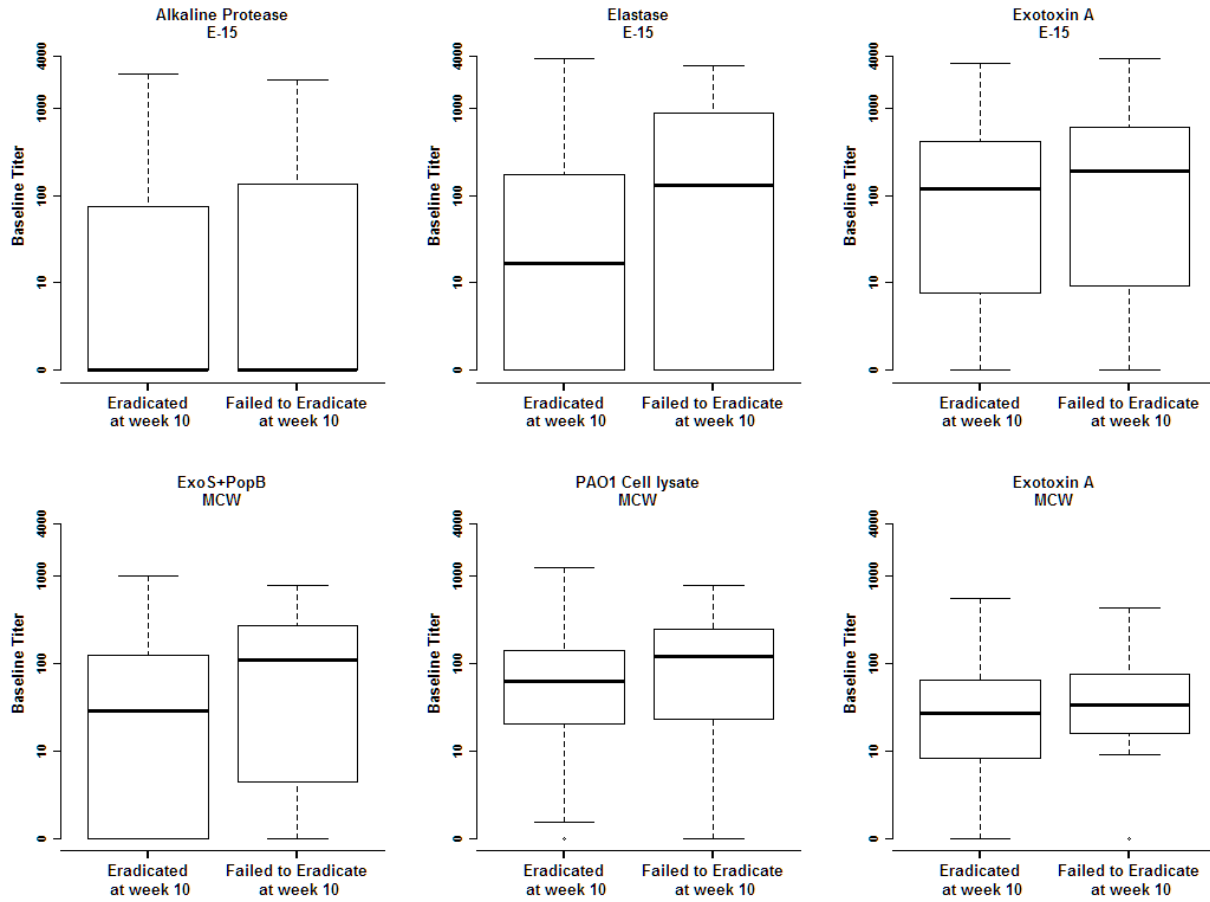
Supplement Figure 2.



Supplement Figure 2. Mean serology titers over time by respiratory culture results utilizing modified Leeds criteria.

Subjects were classified as 'Pa Free' if they were clear of *P. aeruginosa* from baseline through end of study, 'Intermittent' if they had less than half of all available cultures testing positive for *P. aeruginosa*, and 'Chronic' if they had half or more of all available cultures testing positive for *P. aeruginosa*.

Supplement Figure 3.



Supplement Figure 3. Baseline serology by subject *P. aeruginosa* eradication status at week 10.