

Analytical and Bioanalytical Chemistry

Electronic Supplementary Material

Use of entrapment and high-performance affinity chromatography to compare the binding of drugs and site-specific probes with normal and glycosylated human serum albumin

Abby J. Jackson, Jeanethe Anguizola, Erika L. Pfaunmiller, and David S. Hage

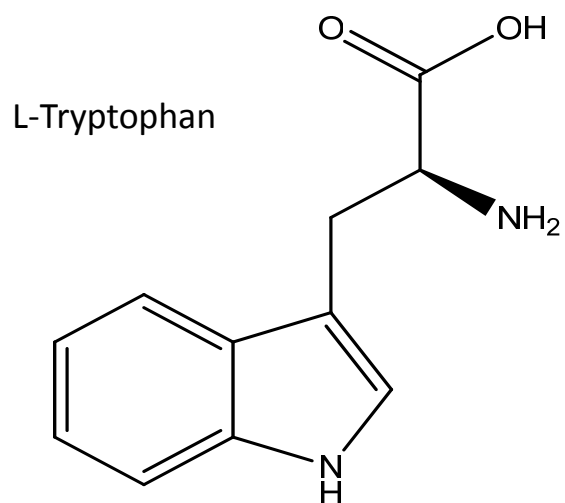
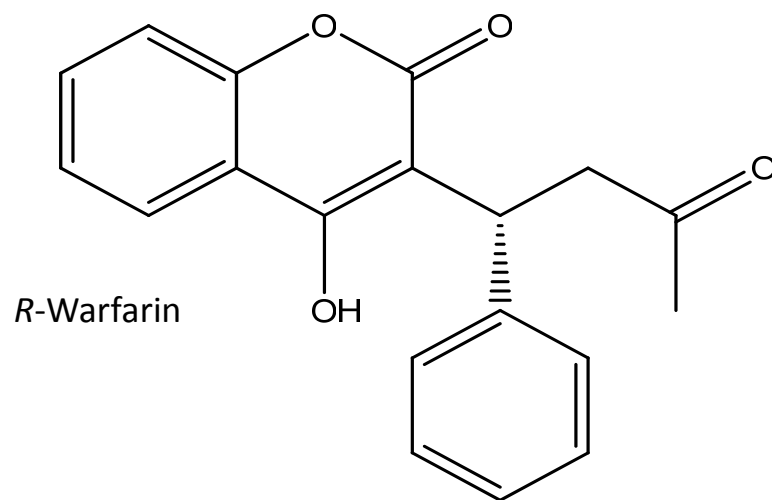


Figure S1. Structures of *R*-warfarin and L-tryptophan