

Supplemental Figure legends

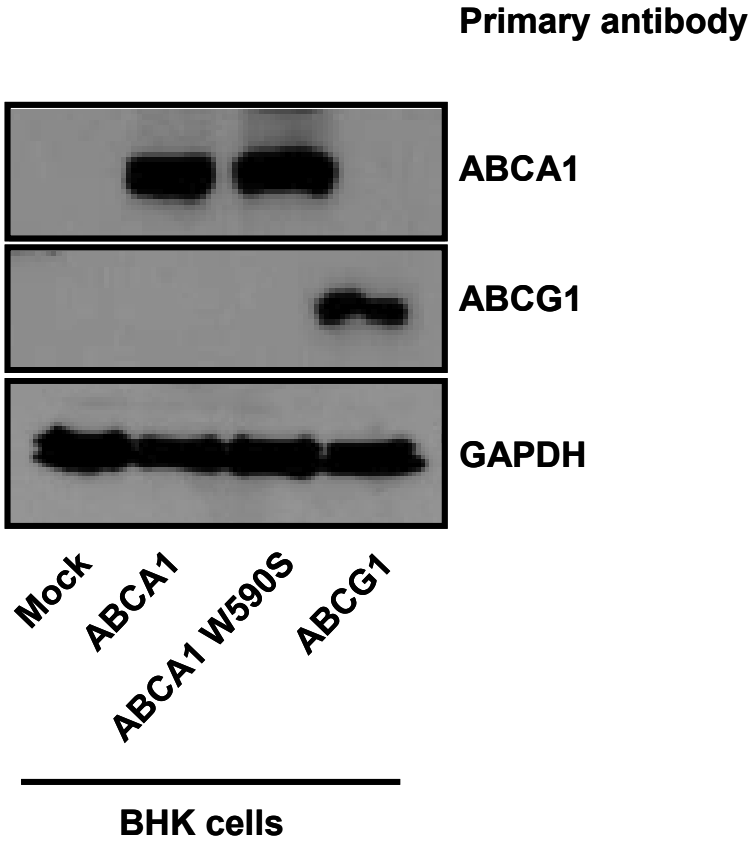
Supp Figure 1: ABCA1 and ABCG1 expression in BHK cells. Western blotting of lysates from the BHK cells was probed with antibodies for ABCA1 and ABCG1 (both from Santa Cruz) to demonstrate the level of expression, using GAPDH (Santa Cruz) as a loading control.

Supp Figure 2: Overexposure of ABCA1 and ABCG1 western blots demonstrates basal level of expression of ABCA1 and ABCG1 in BHK cells.

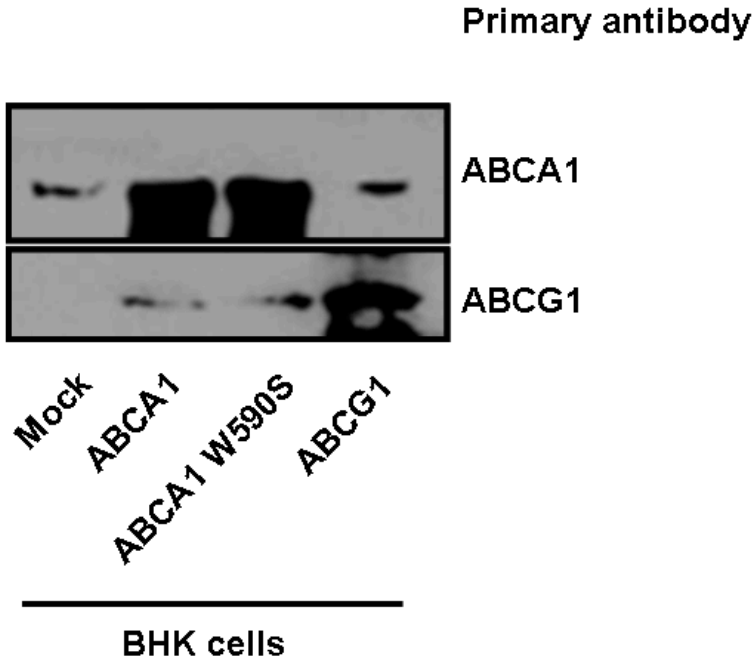
Supp Figure 3: Efflux in BHK cells. Figure 4 was reorganized by grouping each individual BHK cell line together instead of rHDLs to better visualize the effect of different rHDL on each cell line. In comparison to WT-PC in each set, significance is shown; * $p \leq 0.05$, ** $p \leq 0.01$, *** $p \leq 0.001$.

Supp Figure 4: rHDL binding to BHK cells. Figure 5 was reorganized by grouping each individual BHK cell line together instead of rHDLs to better visualize the effect of different rHDL on each cell line. In comparison to WT-PC in each set, significance is shown; * $p \leq 0.05$, ** $p \leq 0.01$, *** $p \leq 0.001$.

Supp Figure 1

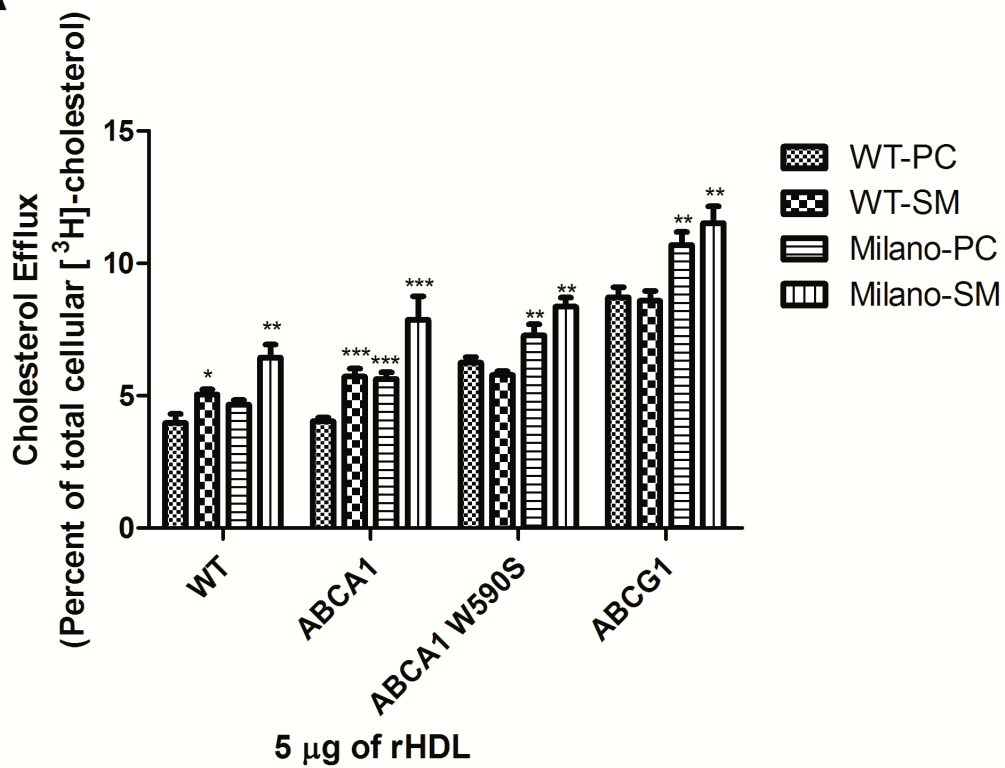


Supp Figure 2

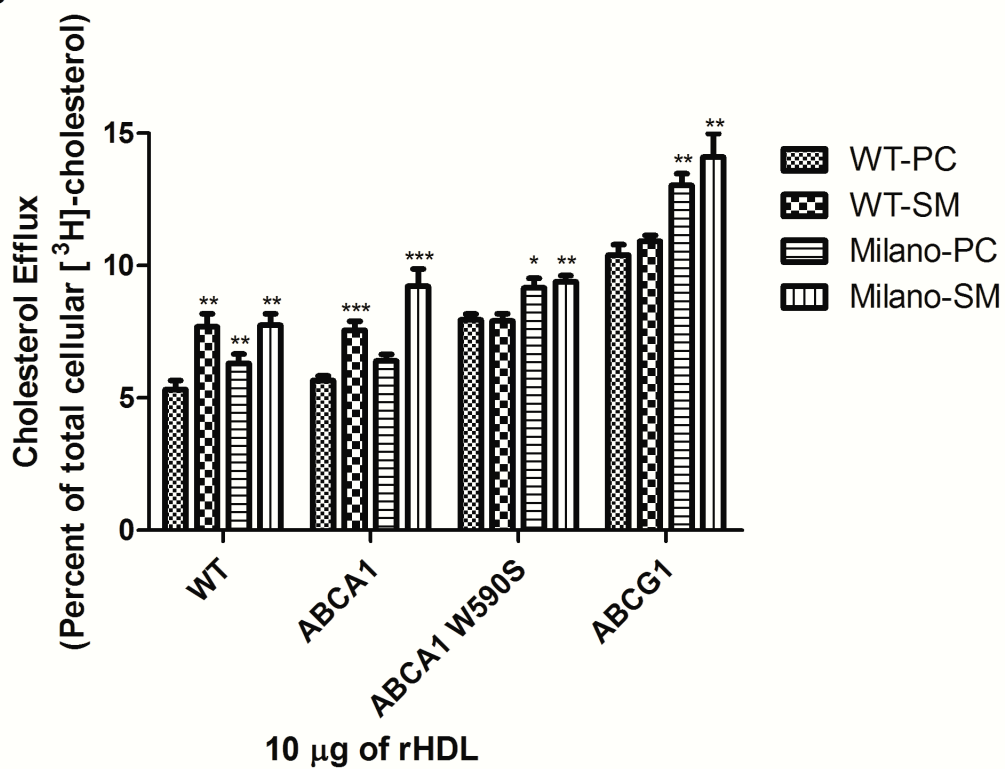


Supp Figure 3.

A



B



Supp Figure 4.

