

Fig. S1

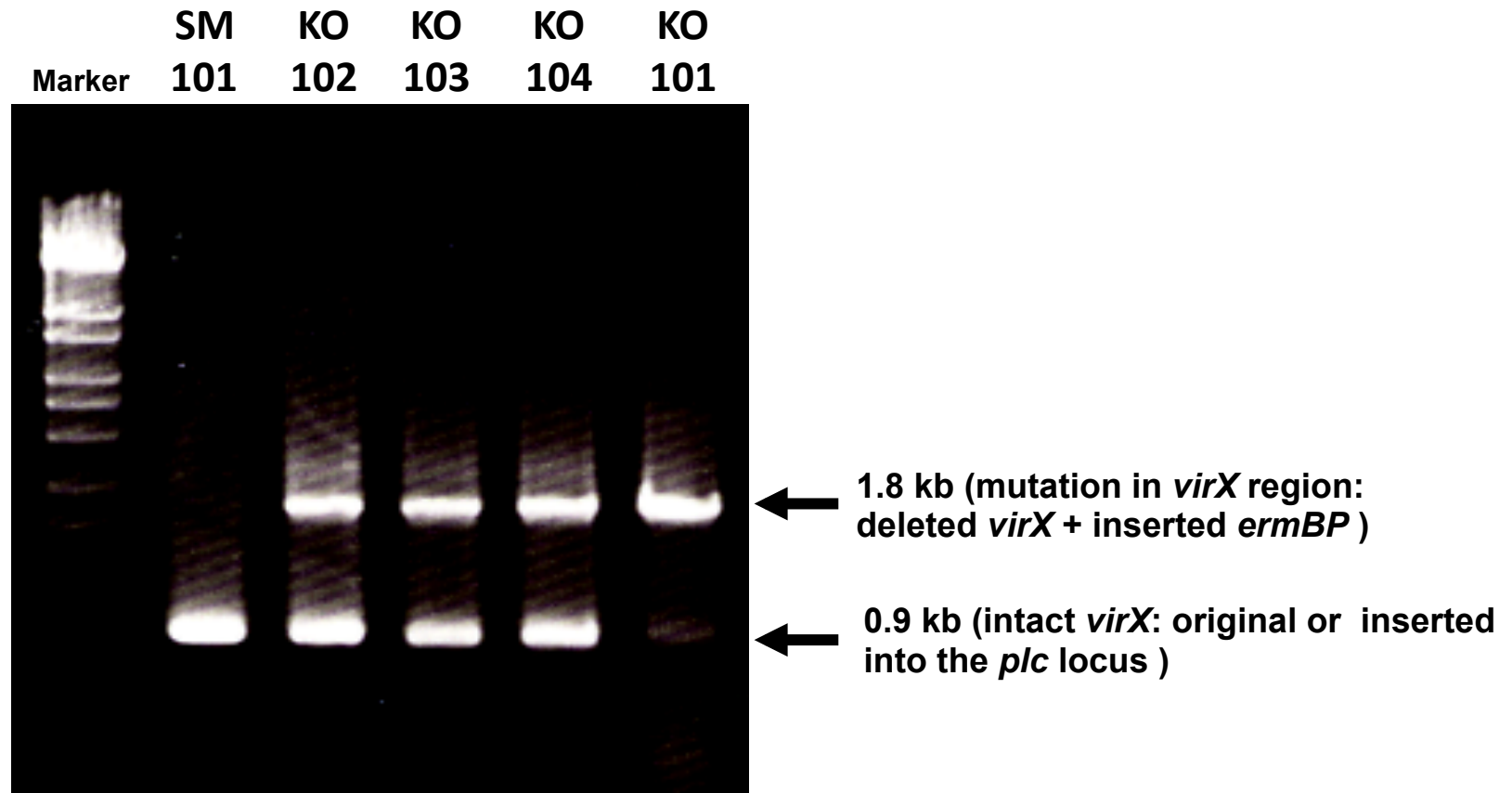


Fig. S1. Confirmation of mutation and complementation of SM101 derivatives. Results are shown from PCR against total DNA from SM101 (wild type), KO101 (*virX* mutant), KO102 (KO101 complemented with intact *virX*), KO103 (KO101 complemented with mutated *virX* (K4Stop)), KO104 (KO101 complemented with mutated *virX* (K42Stop)) using primer *virX*-detect 1 (5'-TTAGCCGCTAAGAATGCCTATACC-3') and *virX*-detect 2 (5'-GTTTGATGAGTGCTCAGCAT-3').

Note that SM101 has only intact *virX*, KO101 has a insertion mutation in the *virX* locus with *ermBP*, and KO102, 103, 104 have intact *virX* insertions into the *plc* locus in addition to KO101.