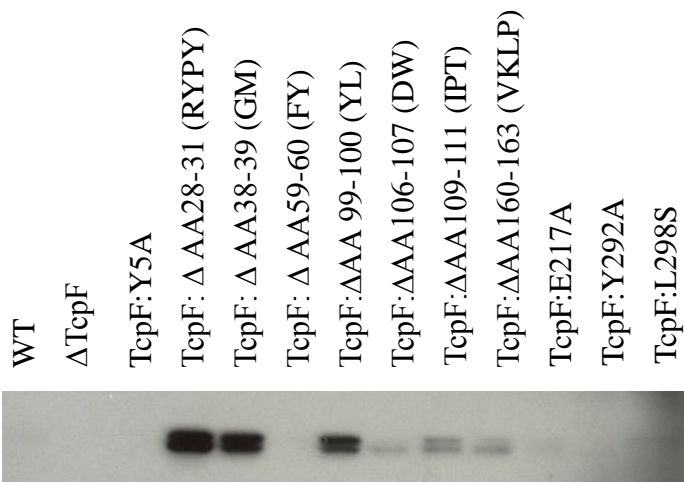


Supplemental Fig. 1. Deletion of VCO395_A0815 has no effect on TcpF secretion. Wild-type or mutant strains were grown under *tcp* inducing conditions overnight. After centrifugation 20 μ L culture supernatants (A) or 16 μ g whole cell lysate (B) were loaded onto a polyacrylamide gel. After protein electrophoresis and transfer to a nitrocellulose membrane, immunoblotting was performed with TcpF antisera. Anti-GbpA of culture supernatants was used as a loading control (C).



Supplemental Fig. 2. 5x longer exposure of NFL (non-full length) TcpF derivatives in supernatants from strains with mutations in regions of *tcpF* predicted to encode secretion determinants by linker scanning mutagenesis and alignment with environmental homologues presented in Figure 3. The exposure time for the film is 5 min in comparison to 1 min of NFL in Figure 3.