

FIG S1

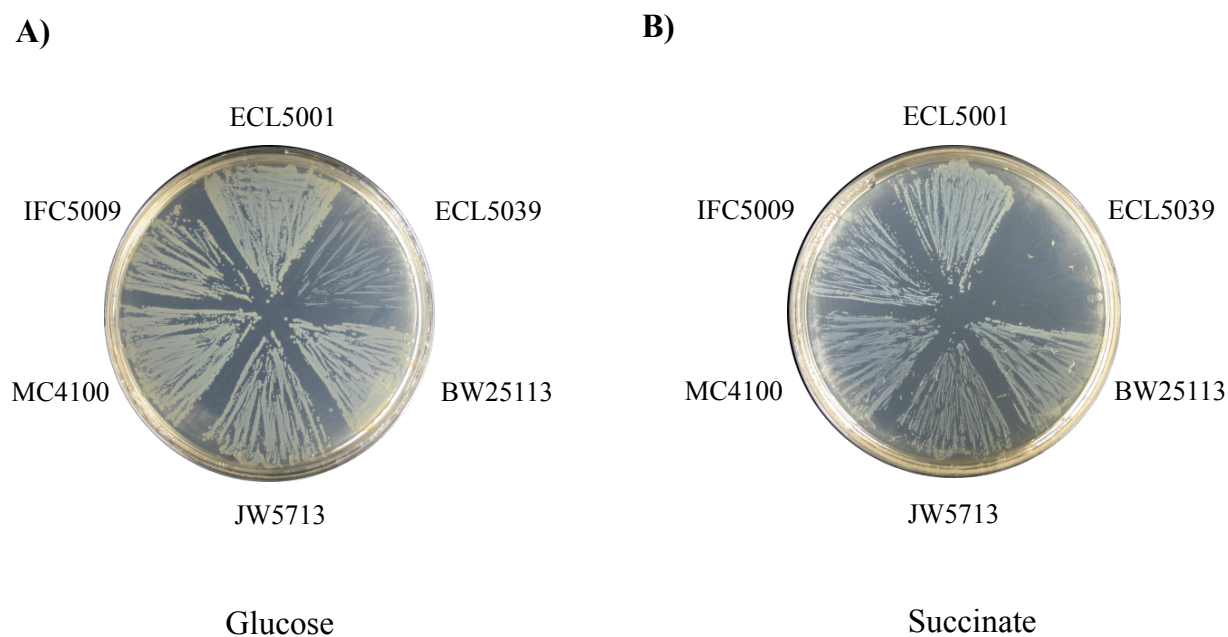


FIG S1. Probing the *ubi*⁻ phenotypes. Strains ECL5001 (*wt*, *cydA*'-lacZ), ECL5039 (*ubiCA*::*Kan*, *cydA*'-lacZ), BW25113 (*wt*), JW5713 (*ubiC*::*Kan*), MC4100 (*wt*), and IFC5009 (*ubiC*::*Kan*), were plated on defined mineral agar plates supplemented with (A) glucose or (B) succinate, and incubated overnight at 37 °C under aerobic growth conditions.