

Supplemental Figure 1.

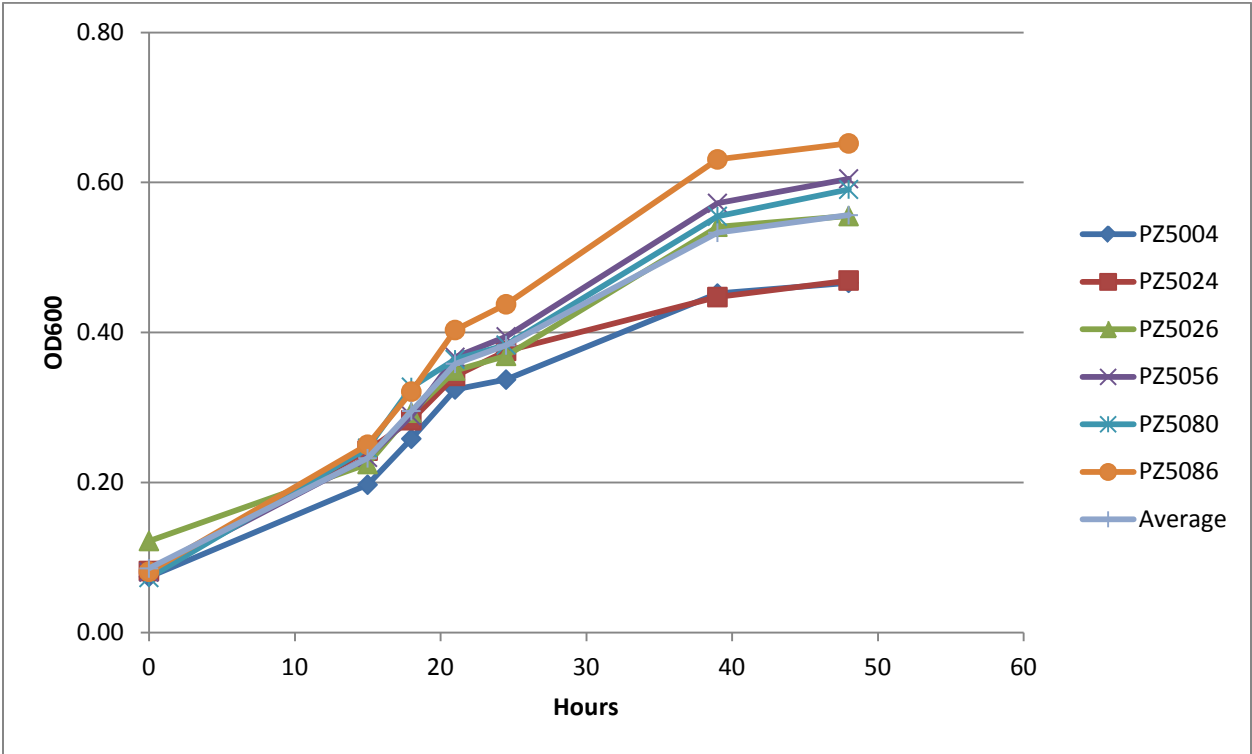


Figure S1. A representative growth curve of the six Colombian strains is shown. Bacteria were collected for all experiments at the 18 hour time point when the bacteria were in log phase and there were minimal differences in growth between strains.

Supplemental Figure 2.



Figure S2. Eukaryotic RNA does not bind to custom *H. pylori* microarrays (*left*), but hybridization is observed in samples containing bacterial RNA, with or without Microbenrich purification (*middle and right*).