

Supplementary Figures

Figure S1: PCR sensitivity with representative patient sample evaluated by 2-fold dilution series of template DNA with dried down primers. DNA template concentration in each lane is as follows in copies/ml: lanes 1, 9: 25000, lanes 2, 10: 12500, lanes 3, 11: 6250, lanes 4,12: 3125, lanes 5, 13: 1560, lanes 6, 14: 780, lanes 7, 15: 390, lanes 8, 16: no DNA control

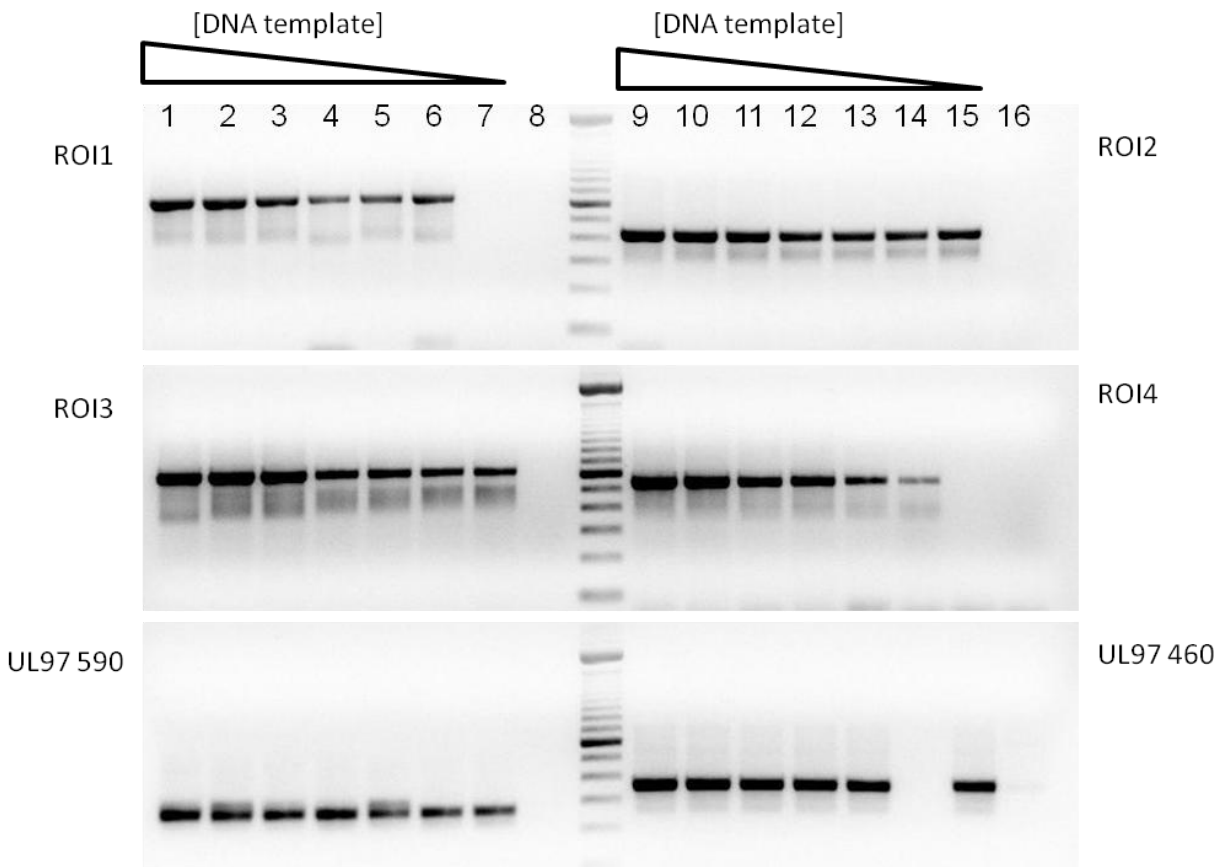


Figure S2. CMV viral load and UL97/54 mutation profile for patients with only UL97 mutations or wild type genotypes Blue dots indicate quantitation by qPCR. Tick marks in mutation labels indicate dates of testing. Asterisk indicates resistance testing performed for this study. UL97 results without an asterisk were from clinical testing using the UL97-only method.

