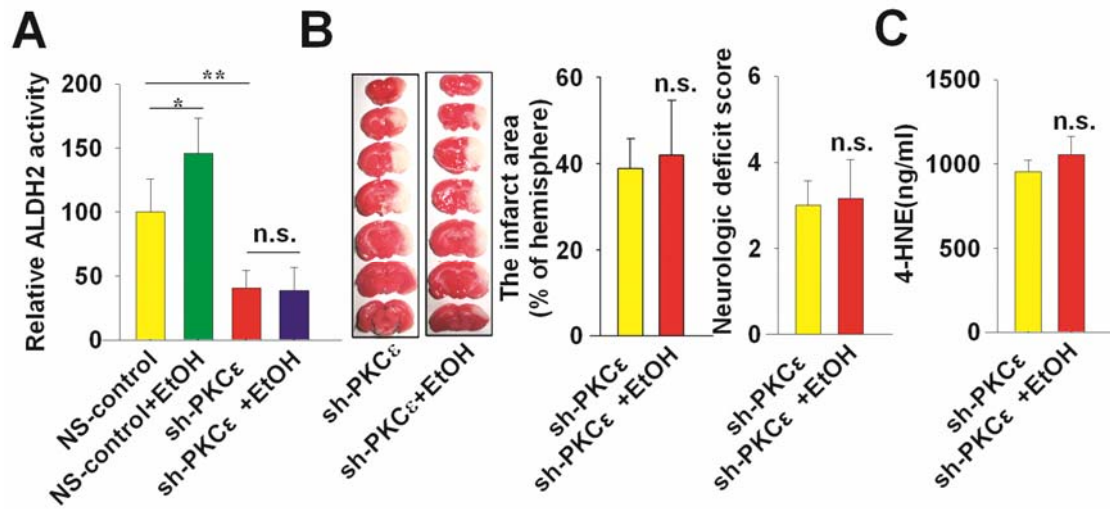


## Supplementary information, Figure S7



**Figure S7** The knockdown of PKC $\epsilon$  abolishes the neuroprotective effect of ethanol.

(A) The activity of ALDH2 in PKC $\epsilon$  knockdown rats treated with or without ethanol for 6 weeks. (B) The left panel shows representative TTC staining of coronal brain sections of PKC $\epsilon$  knockdown rats with or without ethanol for 6 weeks. (C) The measurement of serum 4-HNE level one day after MCAO.  $n = 5$ . Mean  $\pm$  SD. Data in A were analyzed by ANOVA followed by LSD *post-hoc* testing. B and C were analyzed by Student's *t* test. \* $P < 0.05$ , \*\* $P < 0.01$ , n.s. not significant. EtOH, ethanol; sh-PKC $\epsilon$ , short hairpin RNA-mediated PKC $\epsilon$  knockdown vectors; NS-control, Non-silencing control siRNA.