

Supplementary information, Figure S1

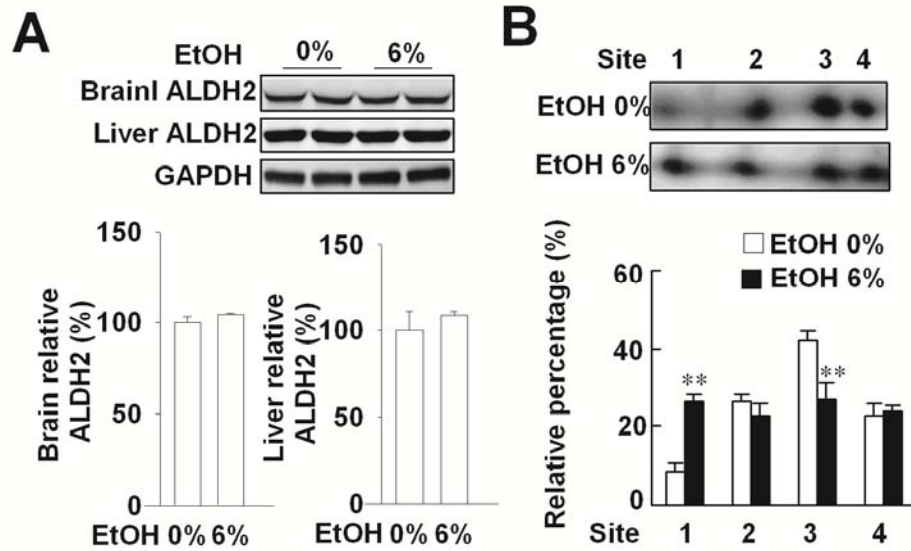


Figure S1 Ethanol affects the activity of ALDH2. **(A)** Ethanol treatment did not change ALDH2 expression in brain and liver. **(B)** Ethanol treatment shifted isoelectric point distribution of cerebral ALDH2, as detected by two dimensional IEF/SDS gel electrophoresis and western blotting. $n = 3$. * $P < 0.05$, ** $P < 0.01$ vs ethanol 0%. EtOH, ethanol.