

Supplementary information, Figure S6

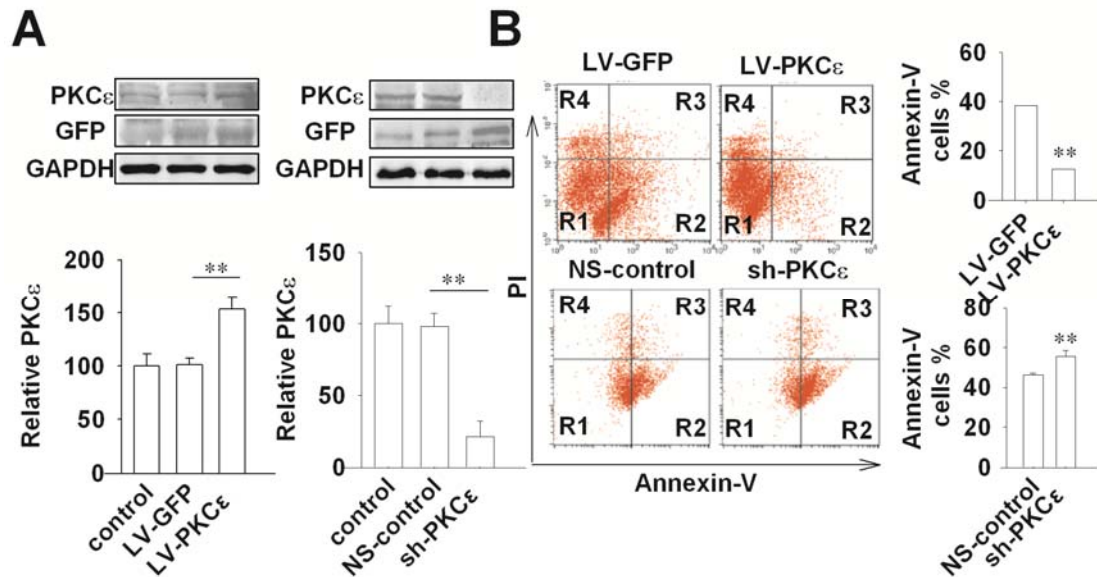


Figure S6 Overexpression of PKC ϵ confers neuroprotective effect in cultured neurons.

(A) Immunoblots and quantification showing efficient overexpression of PKC ϵ by LV-PKC ϵ and knockdown by sh-PKC ϵ in cultured neurons. (B) Primary neurons transfected with LV-PKC ϵ or sh-PKC ϵ , and their control (LV-GFP or NS-control), were exposed to OGD for 12 h. The cell apoptosis (Annexin V staining, R2 + R3) and necrosis (PI staining, R3 + R4) were analyzed by flow cytometer. $n = 3$. Data in A were analyzed by ANOVA followed by LSD *post-hoc* testing; (B) by Student's *t* test. * $P < 0.05$, ** $P < 0.01$. PI, propidium iodide; LV-GFP, lentiviral delivery system encoding green fluorescent protein; LV-PKC ϵ , lentiviral delivery system encoding PKC ϵ ; sh-PKC ϵ , short hairpin RNA-mediated PKC ϵ knockdown vectors; NS-control, Non-silencing control siRNA.