

**SUPPLEMENTAL TABLE I**

<b>Gene</b>	<b>Forward Primer (5→3)</b>	<b>Reverse Primer (5→3)</b>
<i>Cyp2e1</i>	GAAGGACGTGCGGAGGTTTT	GCCAATCAGAAAGGTAGGGTC
<i>Alb</i>	TGCTTTTTCCAGGGGTGTGTT	TTACTTCCTGCACTAATTTGGCA
<i>Fga</i>	AGTCTGGACTACAGATACCGAAG	CGTCAATCAACCCTTTCATCCTG
<i>Fgb</i>	TGGCAACGCCCTCATGGACG	TCCGTAGTTACCCAGCCGTCGT
<i>Fgg</i>	GGCAGAACCAGCACTGCGGA	AGGCATCCCCGGCATCTCCA
<i>Itga1</i>	TGCGCAACGCATTCCCTCAG	CTGGCCCAGAAGAGGGCAGC
<i>Itga2</i>	GAATCCGGGGACCGGAGGCT	ACGAGGGAAGGGCAAGCCTGA
<i>Itga3</i>	GGCCTTGATGGTGGCGGCTT	GCCCCGGCCAGAAGGAGGTA
<i>Itga5</i>	GCCGGGAAGGGACGGAGTCA	GGAGCCATGGGCCCGAACTG
<i>Itgb1</i>	TGTGGAGGCAATGGCGTGTGC	TGCACAGACGCCAAGGCAGG
<i>Coll8a1</i> <i>short</i>	GTGGGCTAGCGGCTCACCGA	CACCTCCTCAGCAACATTCTCTGGC
<i>Coll8a1</i> <i>long</i>	GCCGAGCTCTCCAGTGCTCC	AGCAACATTCTCTGGGAAGTCTGGT
<sup>1</sup> <i>mu36b4</i>	GGAGCCAGCGAGGCCACACTGCTG	CTGGCCACGTTGCGGACACCCTCC

<sup>1</sup>Housekeeping gene

**Supplemental Figure 1. Extracellular matrix expression in liver.** Expression and localization of (A) type XVIII collagen, (B) type IV collagen, (C) perlecan, and (D) laminin.

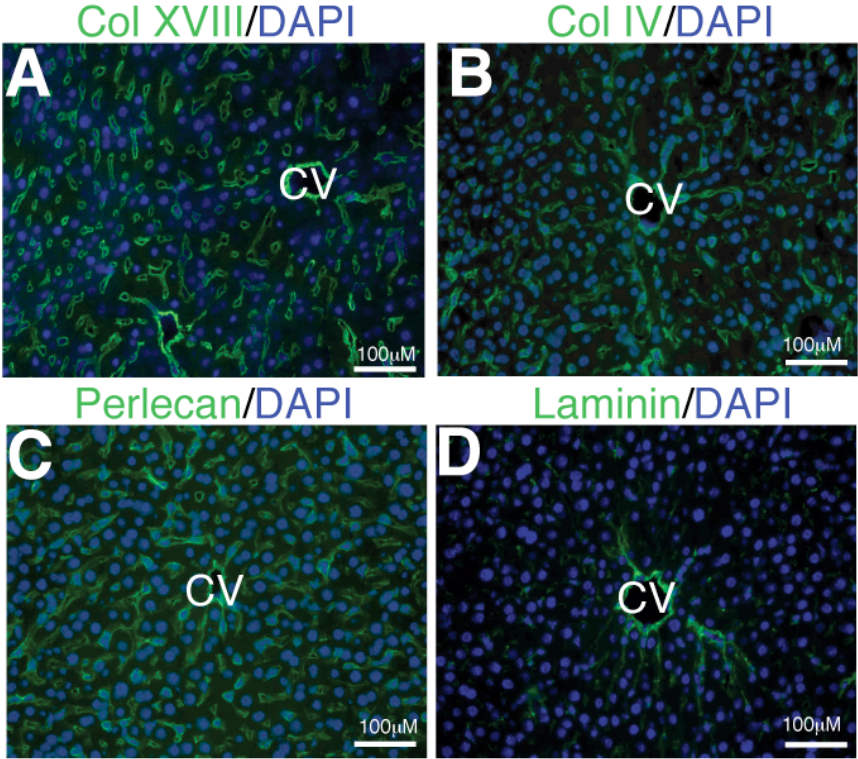
**Supplemental Figure 2. Type XVIII collagen in liver regeneration.** Partial hepatectomy was performed in Col18a1<sup>-/-</sup> (n=3) and wild type control mice (n=4). The bar graph displays the relative liver weight 7 days post-surgery.

**Supplemental Figure 3. Hepatocyte ballooning degeneration in Col18a1<sup>-/-</sup> mice.** Hematoxylin and eosin staining of (A) WT and (B) Col18a1<sup>-/-</sup> mouse liver given 0.5gram/L phenobarbital in drinking water for 24 hours.

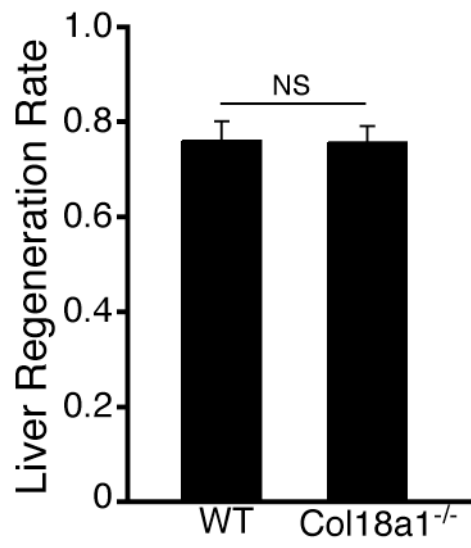
**Supplemental Figure 4. AML12 integrin expression.** Reverse Transcriptase PCR to measure mRNA expression of the  $\alpha 1$ ,  $\alpha 2$ ,  $\alpha 3$ ,  $\alpha 5$ ,  $\alpha 6$ , and  $\beta 1$  integrin subunits in the AML12 cell line.

**Supplemental Figure 5. Akt signaling in Col18a1<sup>-/-</sup> mice.** (A-D) Nuclear localization of phosphorylated Akt (1/2/3) by immuno-fluorescence was lower in Col18a1<sup>-/-</sup> mice when compared to wild type mice and was confirmed by Western blot shown in (E).

Supplemental Figure 1

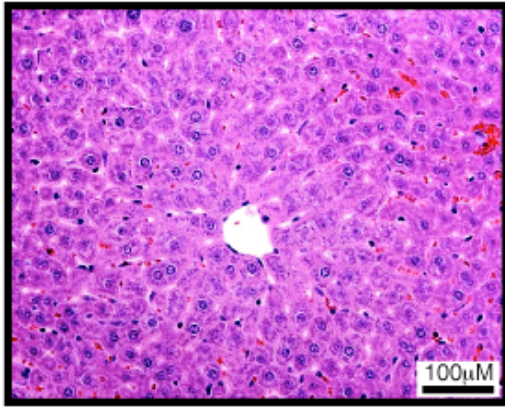


## Supplemental Figure 2

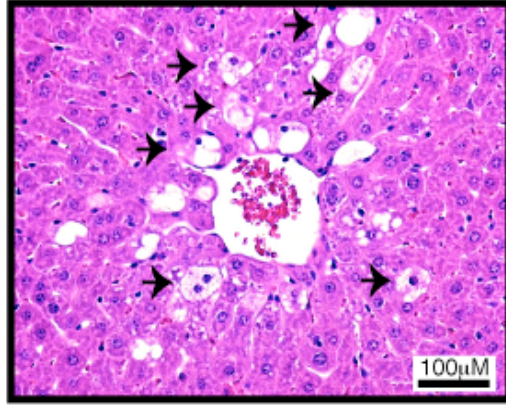


### Supplemental Figure 3

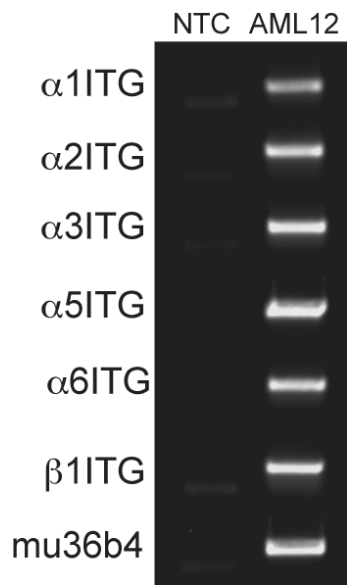
**A** WT +Phenobarbital



**B** Col18a1<sup>-/-</sup> +Phenobarbital



## Supplemental Figure 4



## Supplemental Figure 5

