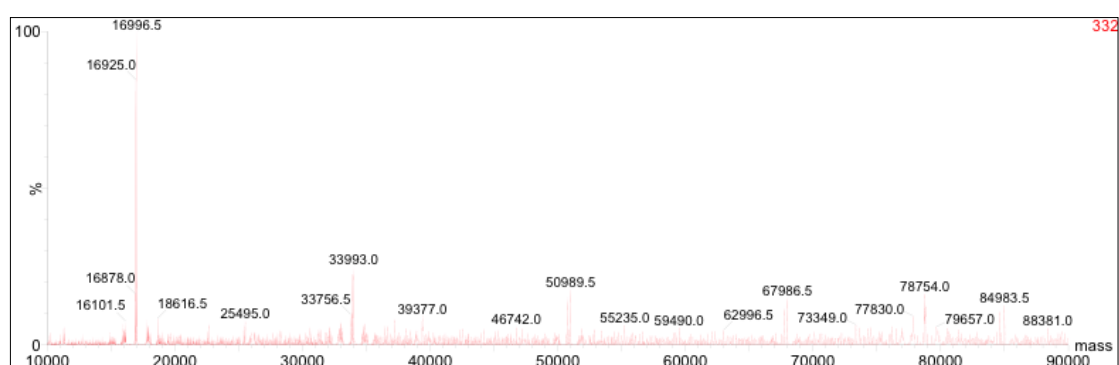


**Figure S1a**

Deconvoluted MS-ESI TOF of the L-selenomethionine substituted PlcHR2, (a) showing the entire mass range from 10000 to 90000 kDa with the peaks corresponding to PlcR2 clearly showing up around 16996 Da, and (b) a close-up around the expected molecular weight of PlcH.



**Figure S1b**

