

Additional figures:

Comparison of conditional survival
between countries, by site and stage

Figure S1. All stages

Figure S2. Localised

Figure S3. Regional

Figure S4. Distant

Osaka: Our data

US: [8] Merrill RM et al. Oncologist 2010

Canada: [5] Ellisson LF et al. Health Rep 2011.

AUS QL (Australia Queen Land): [6] Baade PD et al.
Med J Aust 2011.

AUS NSW (Australia, New South Wales): [2] Yu XQ et
al. BMC cancer 2012.

*In the colon/rectum figures, the dashed line represents rectum results and the solid line represents colon results (as some papers provide the results separately)

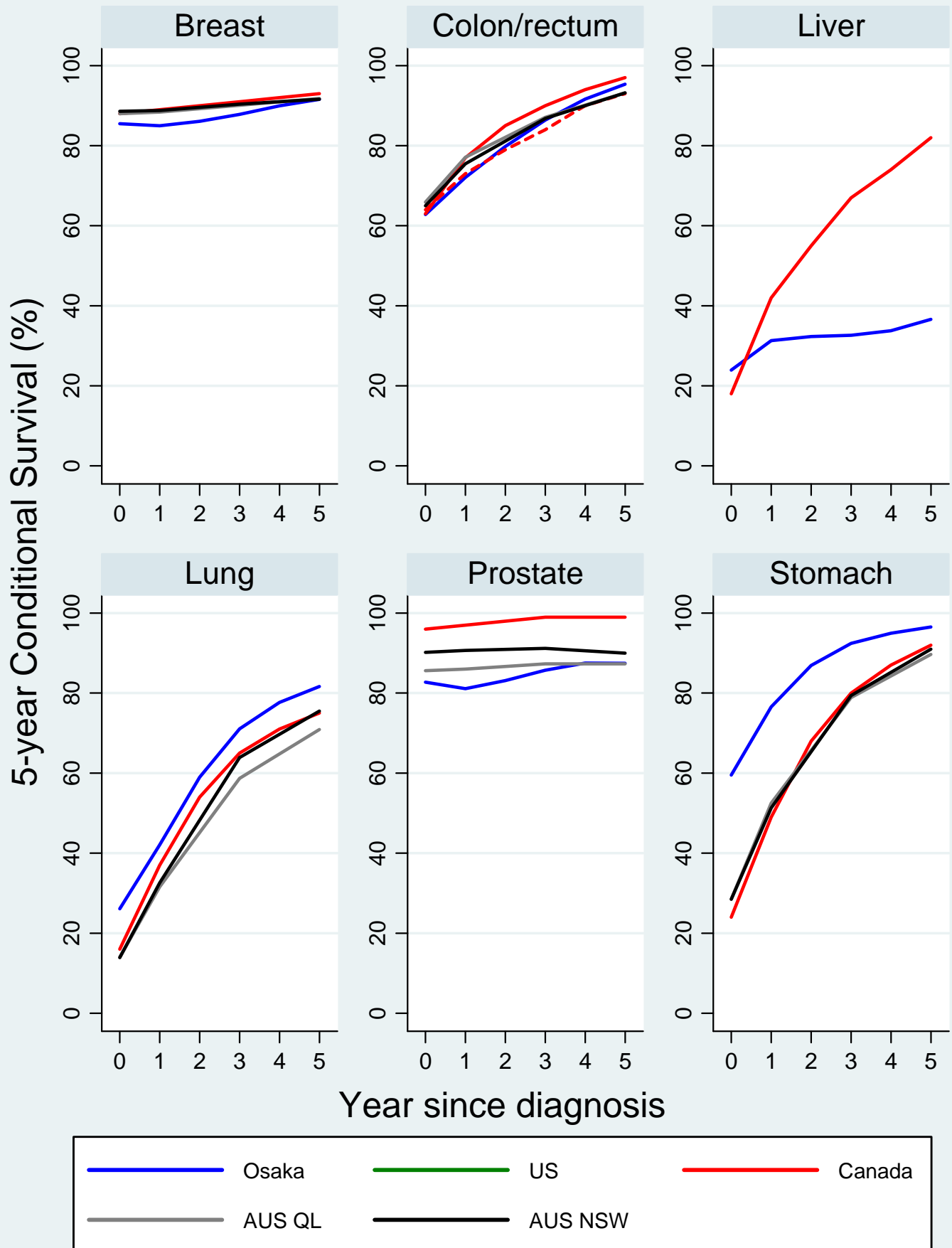


Figure S1. Comparison of five-year conditional survival between countries: All stage

In the Canada colorectal cancer the green solid line represents the colon and the green dotted line represents the rectum.

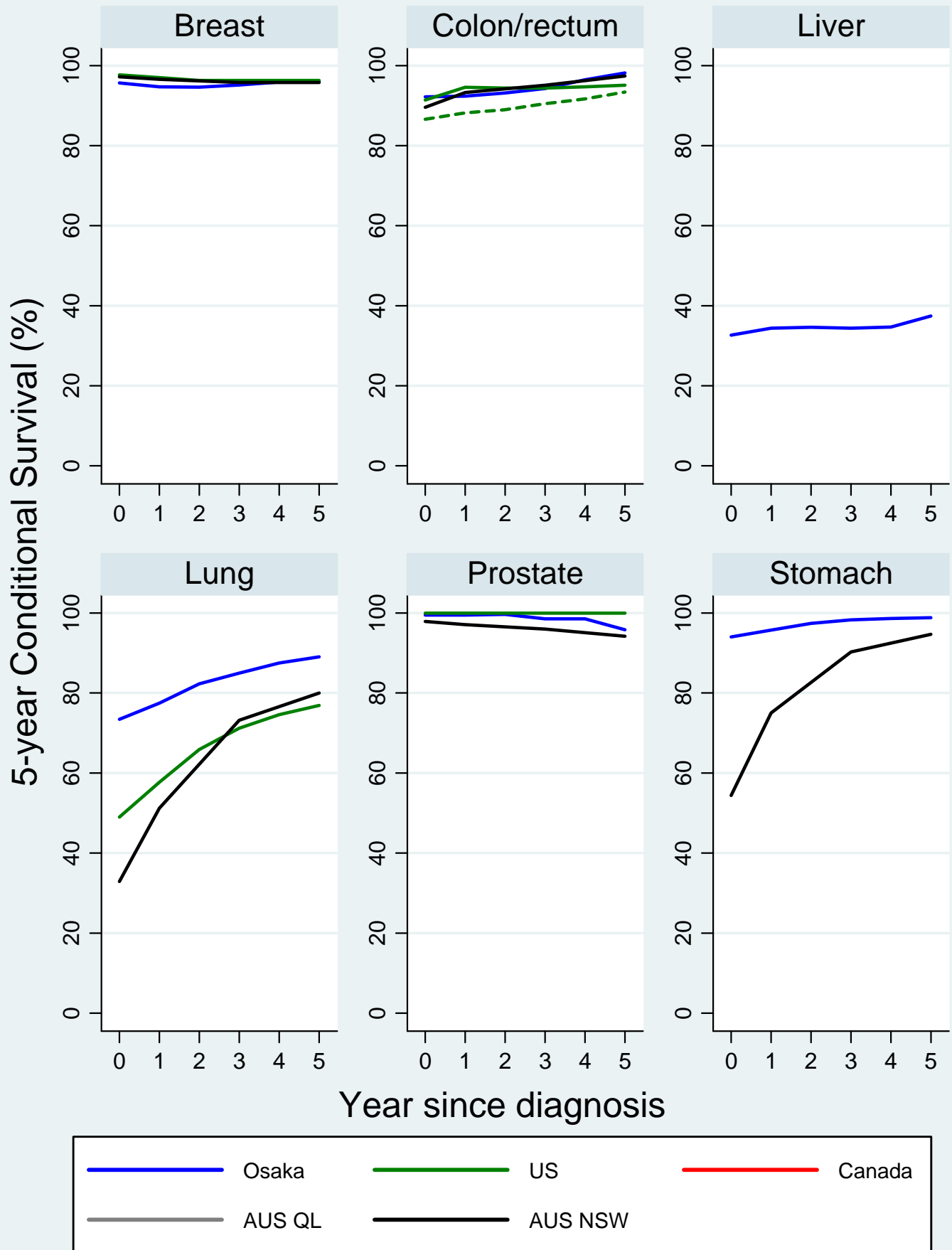


Figure S2. Comparison of five-year conditional survival between countries: Localised

In the US colorectal cancer figures the red solid line represents the colon and the red dotted line represents the rectum.

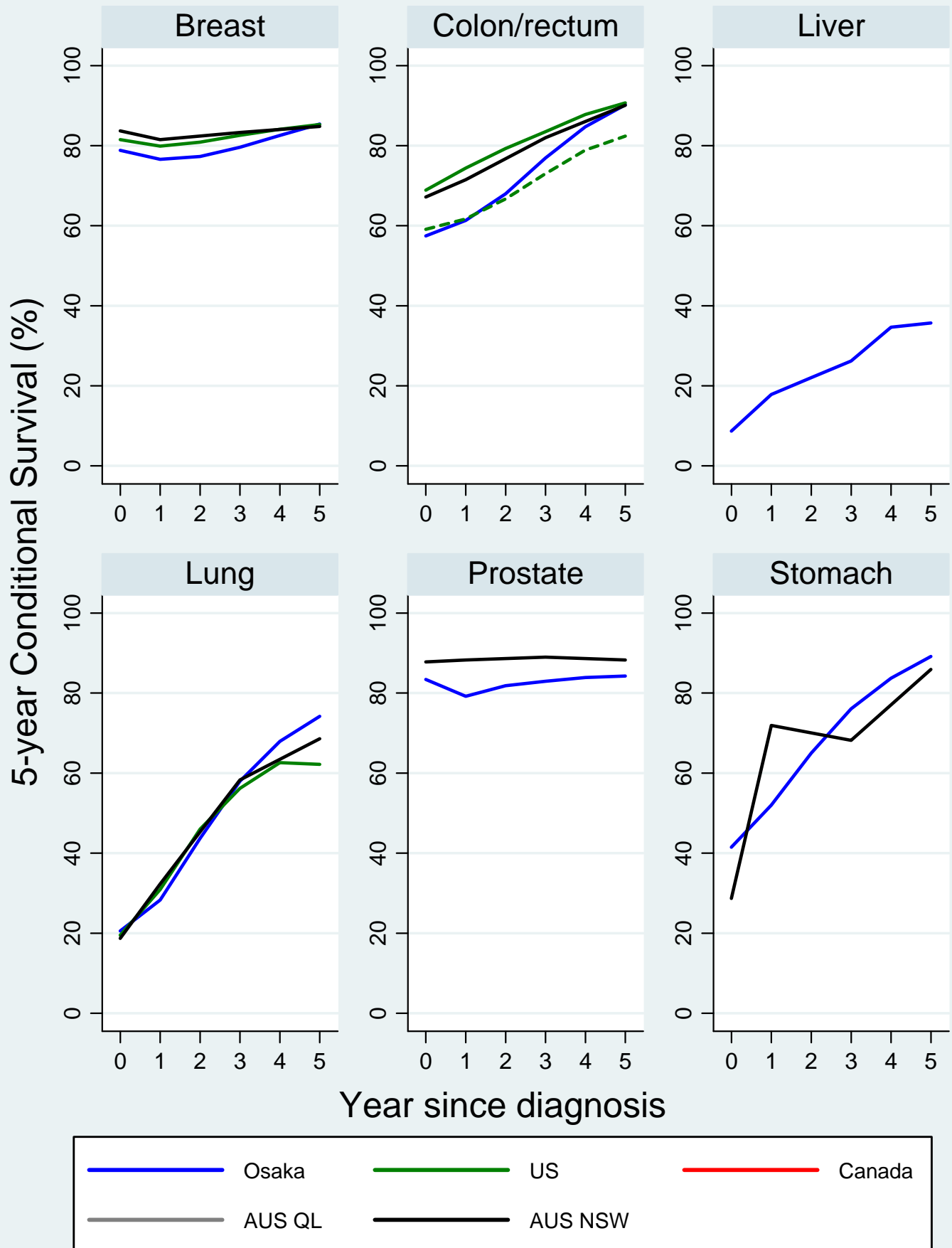


Figure S3. Comparison of five-year conditional survival between countries: Regional

In the US colorectal cancer figures the red solid line represents the colon and the red dotted line represents the rectum.

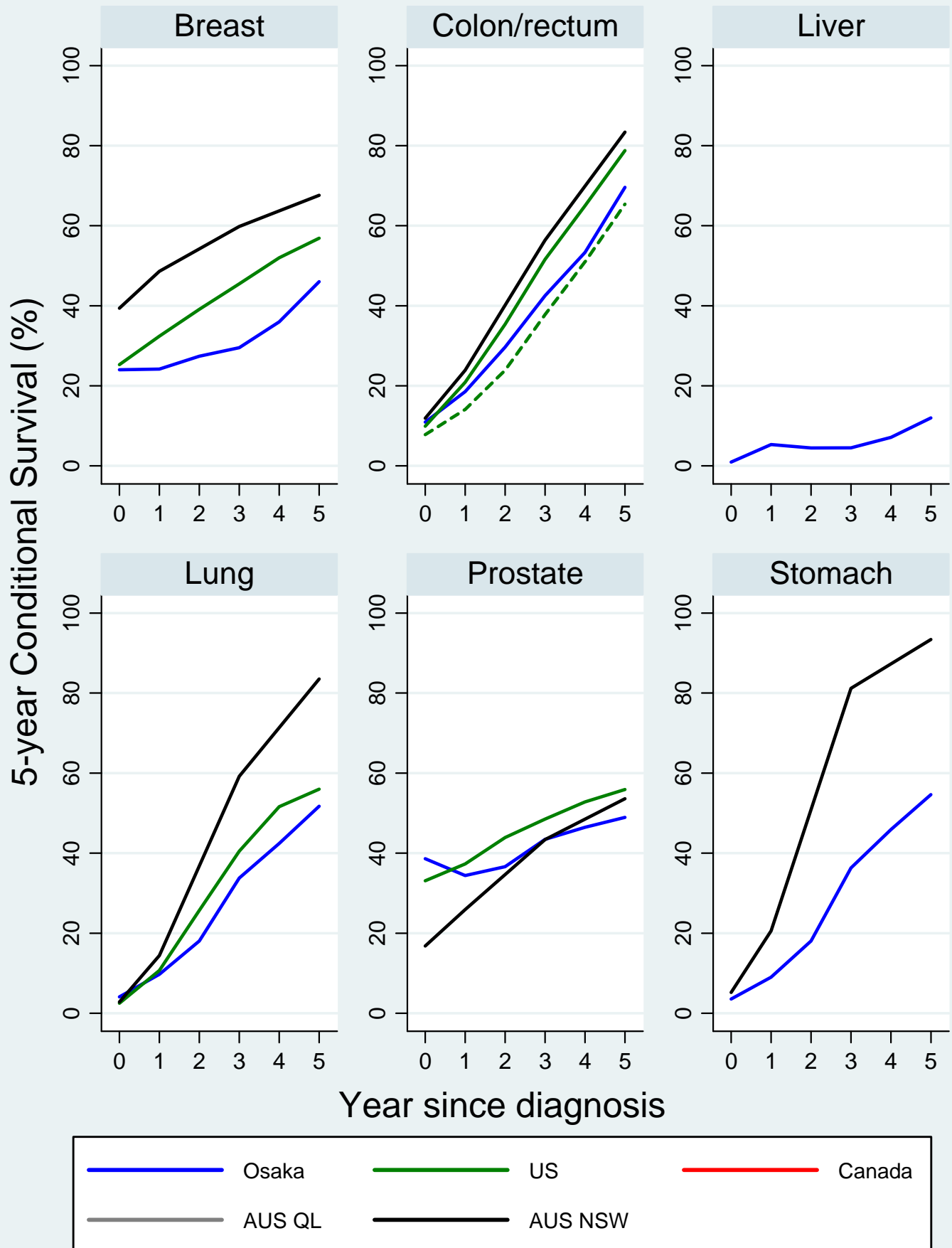


Figure S4. Comparison of five-year conditional survival between countries: Distant

In the US colorectal cancer figures the red solid line represents the colon and the red dotted line represents the rectum.