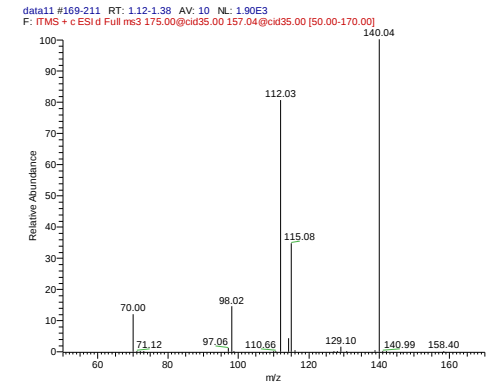
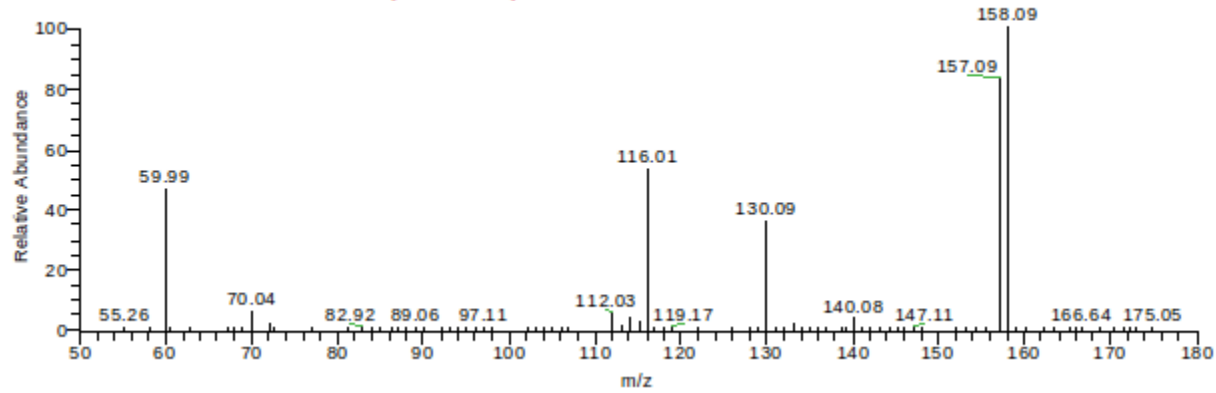


# Arginine M+H[1+], m/z 175.1184

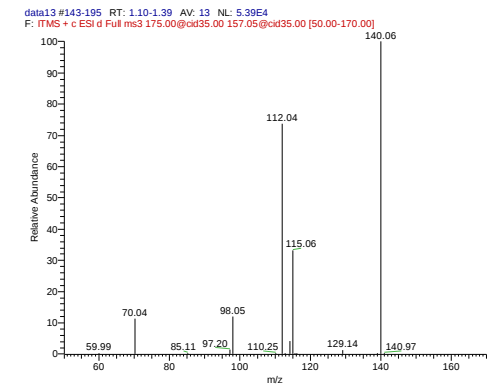
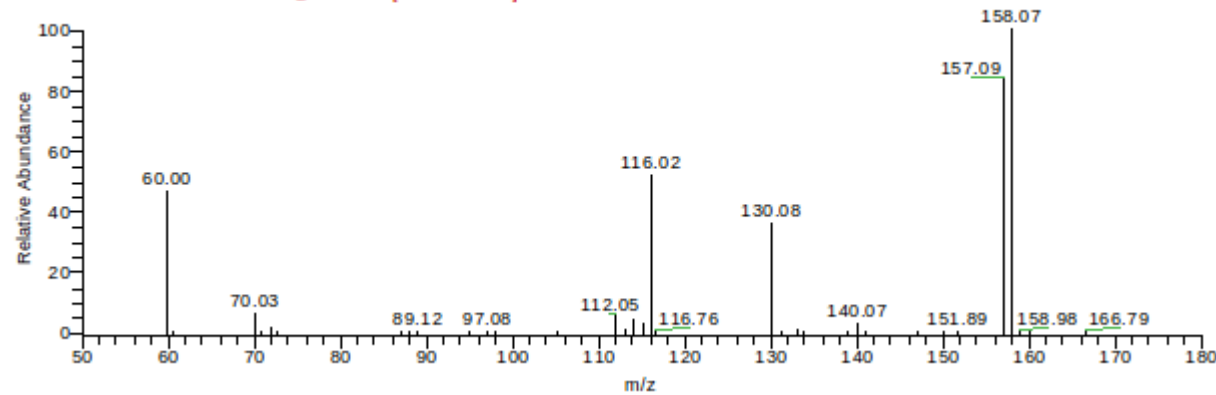
data11 #169-211 RT: 1.10-1.39 AV: 11 NL: 1.09E4  
F: ITMS + c ESI Full ms2 175.00@cid35.00 [50.00-180.00]

cell extract



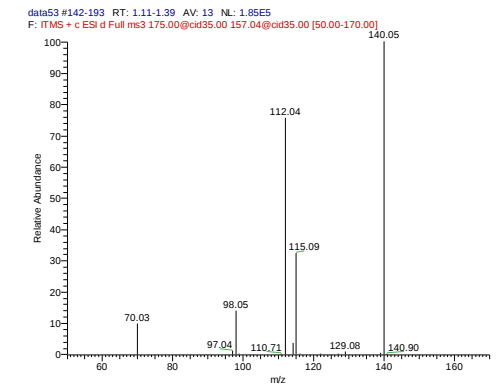
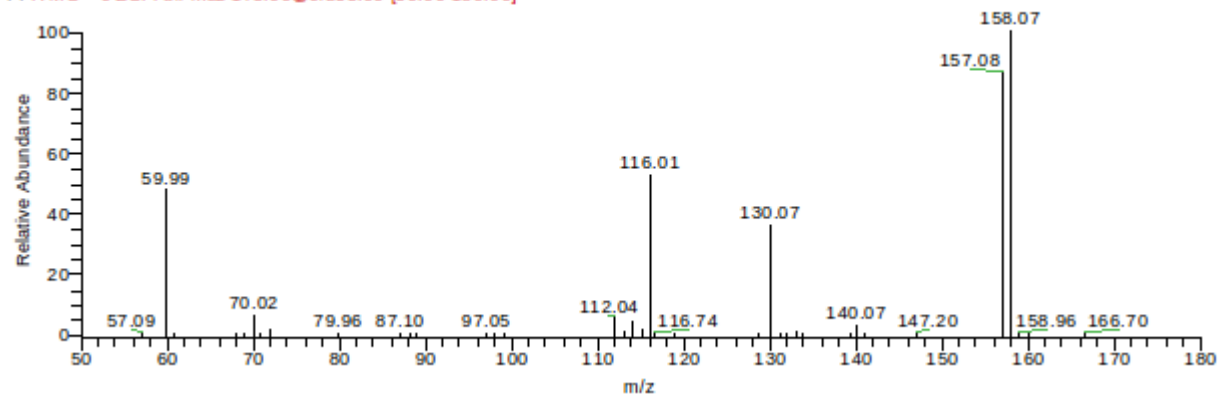
data13 #143-195 RT: 1.11-1.40 AV: 13 NL: 3.12E5  
F: ITMS + c ESI Full ms2 175.00@cid35.00 [50.00-180.00]

cell extract  
+  
chemical



data53 #142-193 RT: 1.10-1.38 AV: 13 NL: 9.78E5  
F: ITMS + c ESI Full ms2 175.00@cid35.00 [50.00-180.00]

chemical  
reference

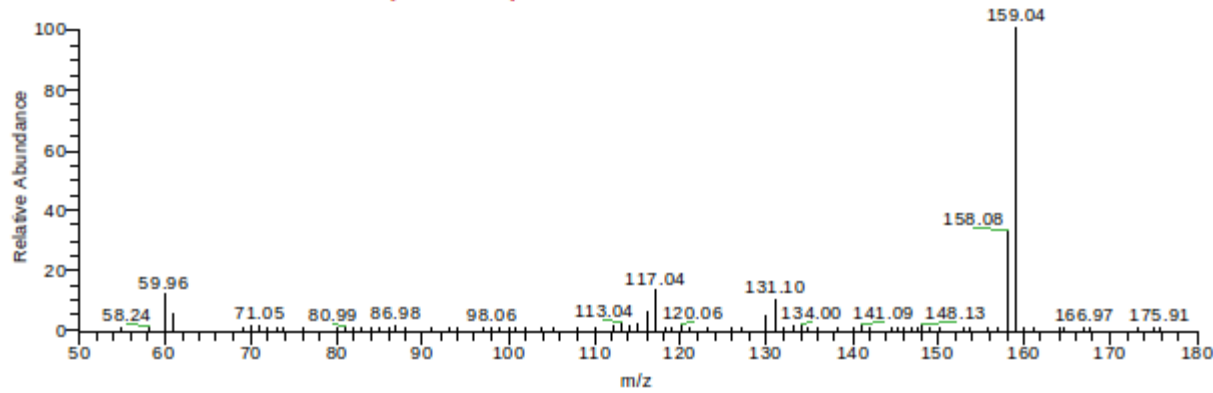


# Citrulline M+H[1+], m/z 176.1022

cell extract

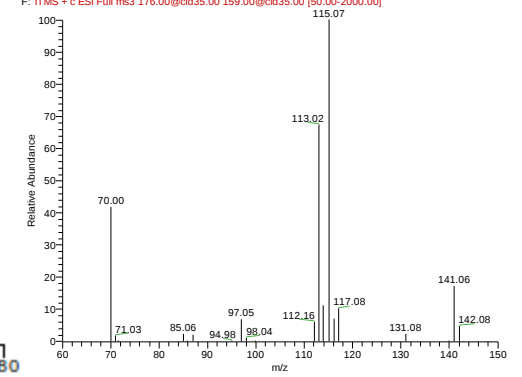
data15 #206-217 RT: 1.80-1.88 AV: 4 NL: 4.76E3

F: ITMS + c ESI Full ms2 176.00@cid35.00 [50.00-180.00]



data15 #206-217 RT: 1.81-1.89 AV: 4 NL: 5.11E2

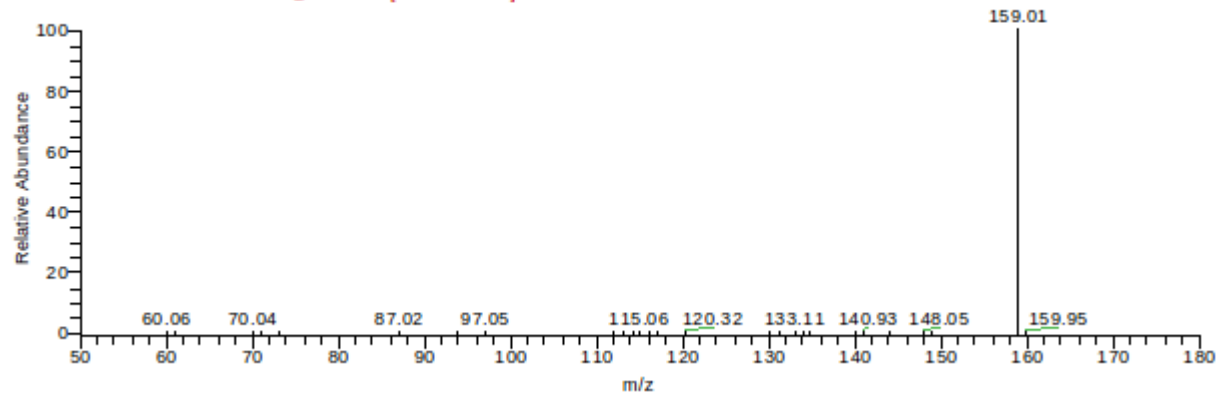
F: ITMS + c ESI Full ms3 176.00@cid35.00 159.00@cid35.00 [50.00-2000.00]



cell extract  
+  
chemical

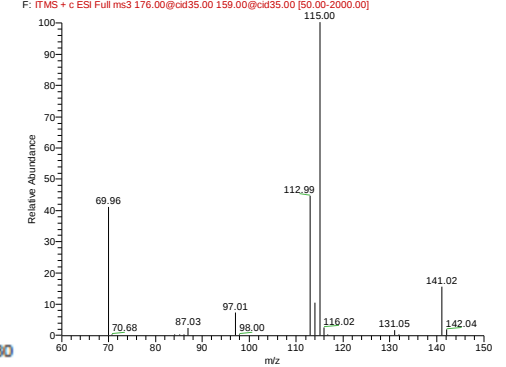
data17 #223-239 RT: 1.80-1.90 AV: 6 NL: 1.38E6

F: ITMS + c ESI Full ms2 176.00@cid35.00 [50.00-180.00]



data17 #223-239 RT: 1.81-1.89 AV: 5 NL: 1.98E5

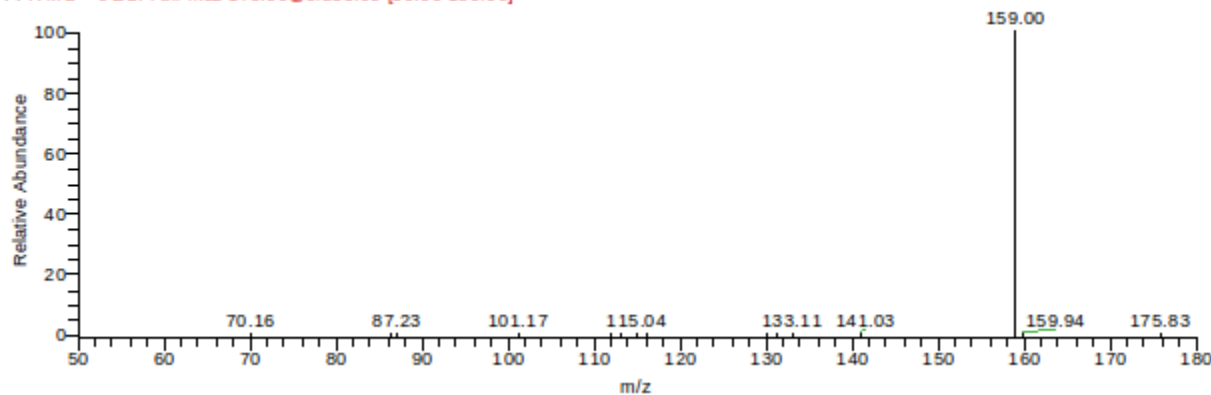
F: ITMS + c ESI Full ms3 176.00@cid35.00 159.00@cid35.00 [50.00-2000.00]



chemical  
reference

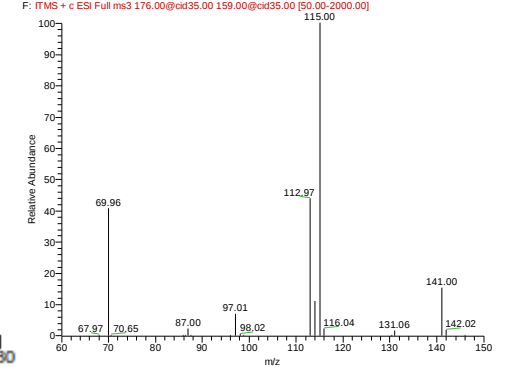
data57 #228-243 RT: 1.82-1.89 AV: 5 NL: 2.29E6

F: ITMS + c ESI Full ms2 176.00@cid35.00 [50.00-180.00]



data57 #228-243 RT: 1.80-1.90 AV: 6 NL: 3.26E5

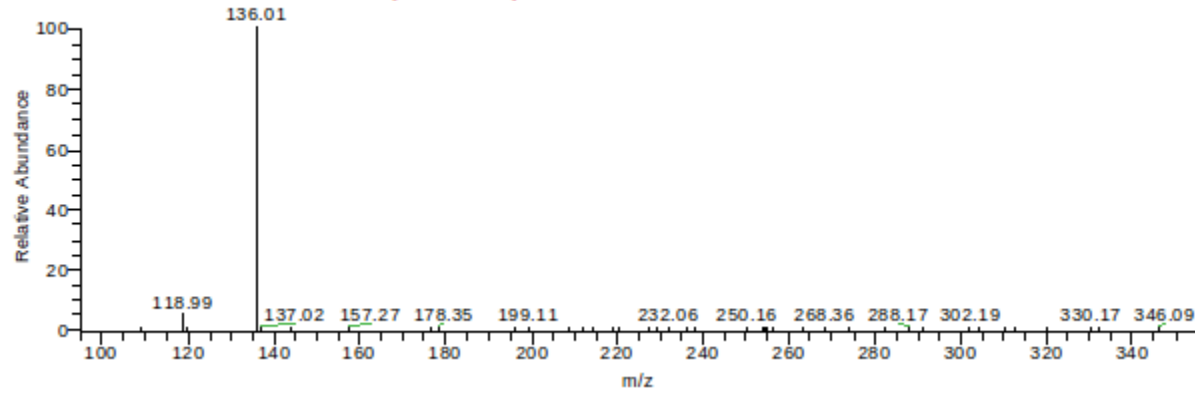
F: ITMS + c ESI Full ms3 176.00@cid35.00 159.00@cid35.00 [50.00-2000.00]



# AMP M+H[1+], m/z 348.0698

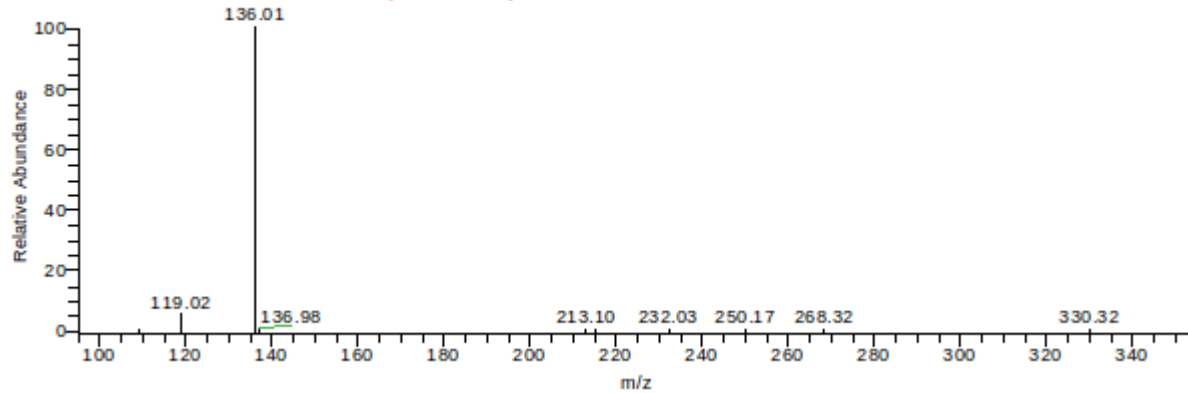
cell extract

data23 #1221-1237 RT: 7.85-7.95 AV: 5 NL: 8.49E4  
F: ITMS + c ESI Full ms2 348.00@cid35.00 [95.00-355.00]



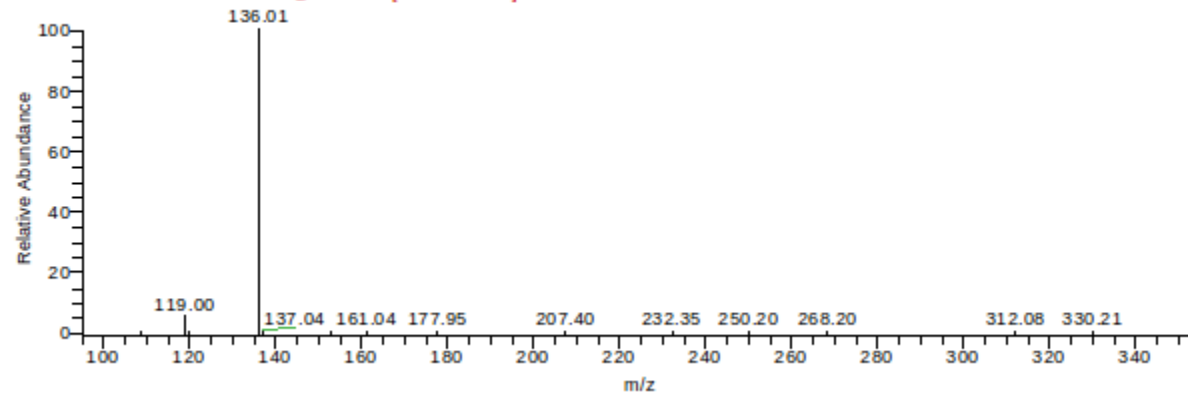
cell extract  
+  
chemical

data25 #1224-1241 RT: 7.85-7.94 AV: 5 NL: 2.28E6  
F: ITMS + c ESI Full ms2 348.00@cid35.00 [95.00-355.00]

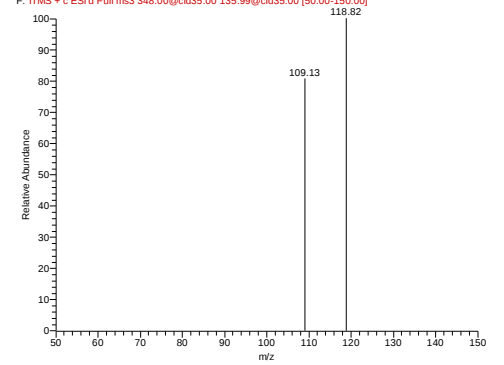


chemical  
reference

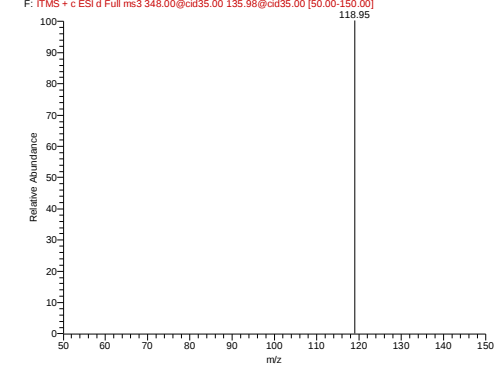
data65 #1208-1225 RT: 7.86-7.95 AV: 5 NL: 1.92E6  
F: ITMS + c ESI Full ms2 348.00@cid35.00 [95.00-355.00]



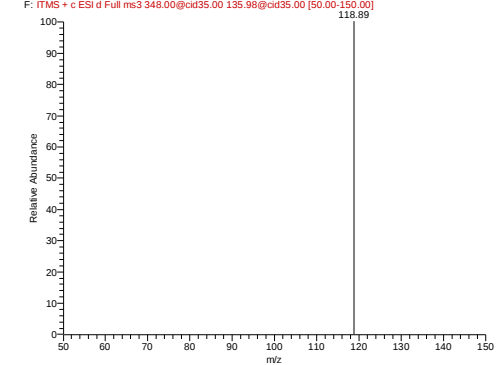
data23 #1221-1237 RT: 7.85-7.93 AV: 4 NL: 7.25  
F: ITMS + c ESI d Full ms3 348.00@cid35.00 135.99@cid35.00 [50.00-150.00]



data25 #1224-1241 RT: 7.85-7.95 AV: 5 NL: 4.10E2  
F: ITMS + c ESI d Full ms3 348.00@cid35.00 135.98@cid35.00 [50.00-150.00]



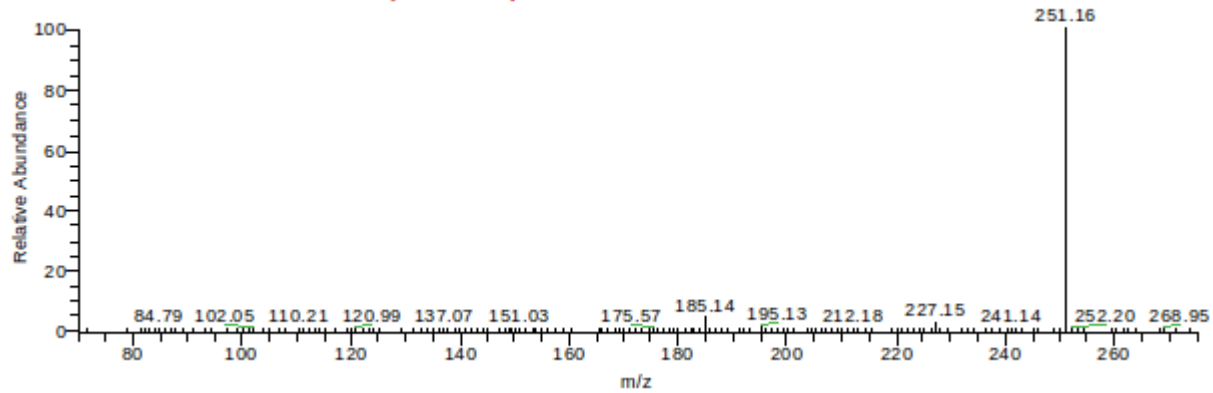
data65 #1208-1225 RT: 7.86-7.93 AV: 4 NL: 3.56E2  
F: ITMS + c ESI d Full ms3 348.00@cid35.00 135.98@cid35.00 [50.00-150.00]



# Inosine M+H[1+], m/z 269.0874

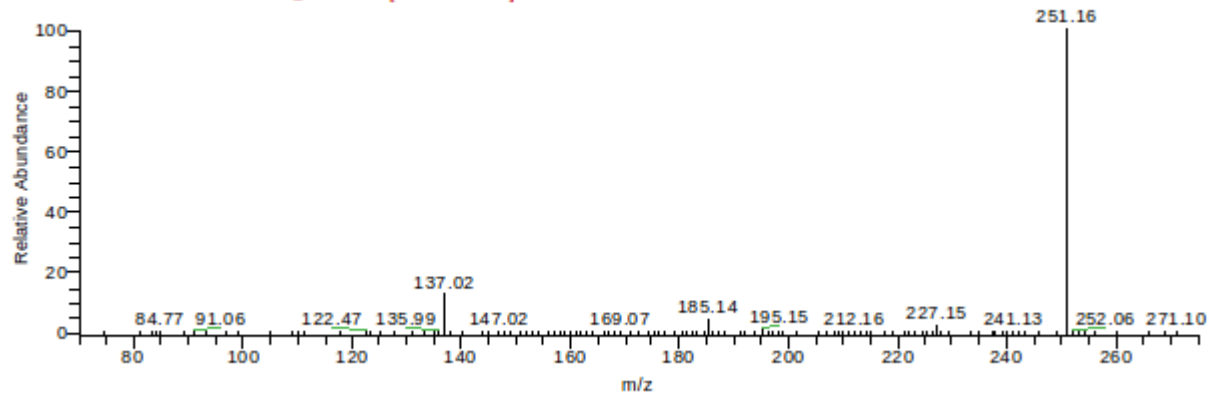
data35 #215-264 RT: 1.60-2.00 AV: 17 NL: 2.11E4  
F: ITMS + c ESI Full ms2 269.00@cid35.00 [70.00-275.00]

cell extract



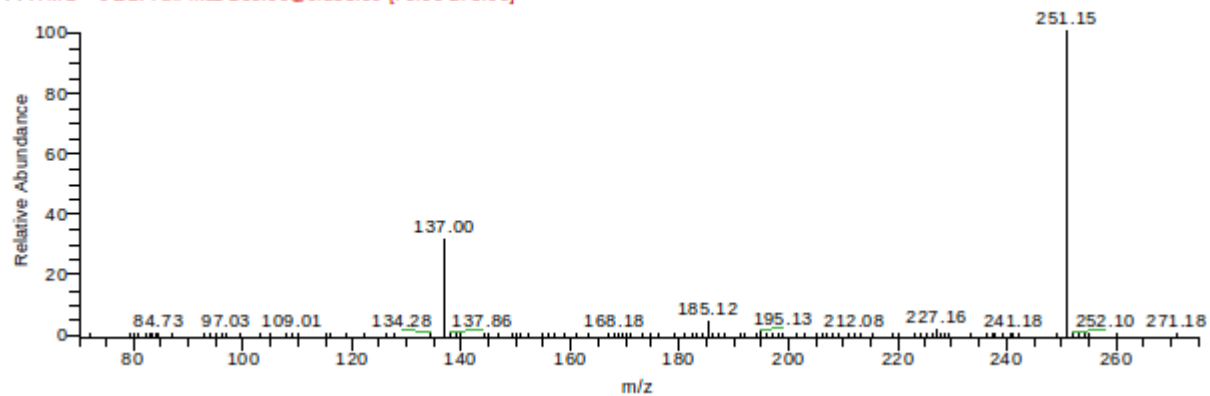
data37 #216-265 RT: 1.62-1.98 AV: 16 NL: 1.70E4  
F: ITMS + c ESI Full ms2 269.00@cid35.00 [70.00-275.00]

cell extract  
+  
chemical



data77 #221-275 RT: 1.60-2.00 AV: 19 NL: 3.88E4  
F: ITMS + c ESI Full ms2 269.00@cid35.00 [70.00-275.00]

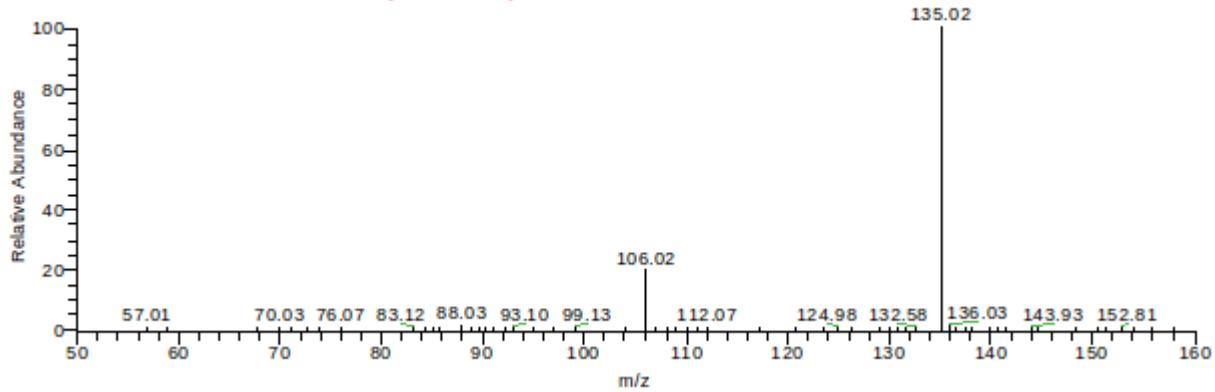
chemical  
reference



# Xanthine M+H[1+], m/z 153.04

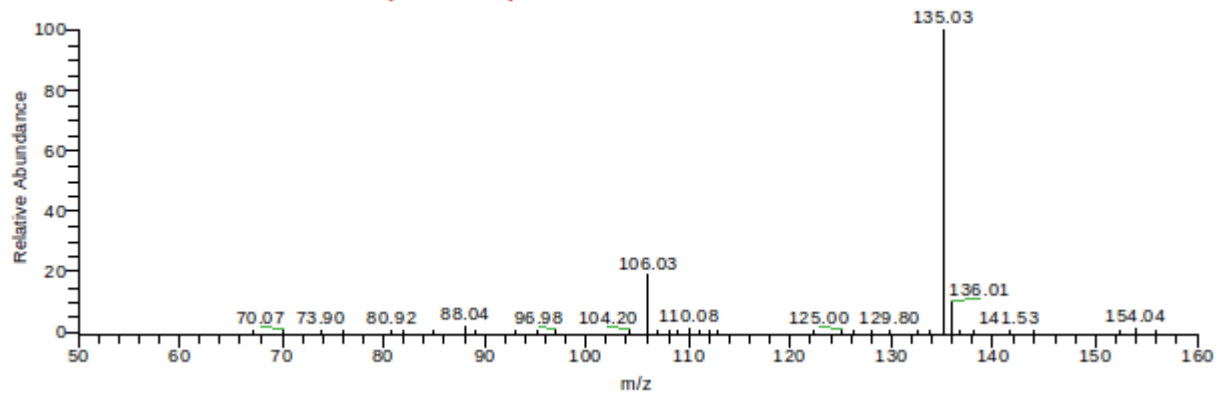
cell extract

data83 #306-337 RT: 2.00-2.18 AV: 8 NL: 1.02E5  
F: ITMS + c ESI Full ms2 153.00@cid35.00 [50.00-160.00]



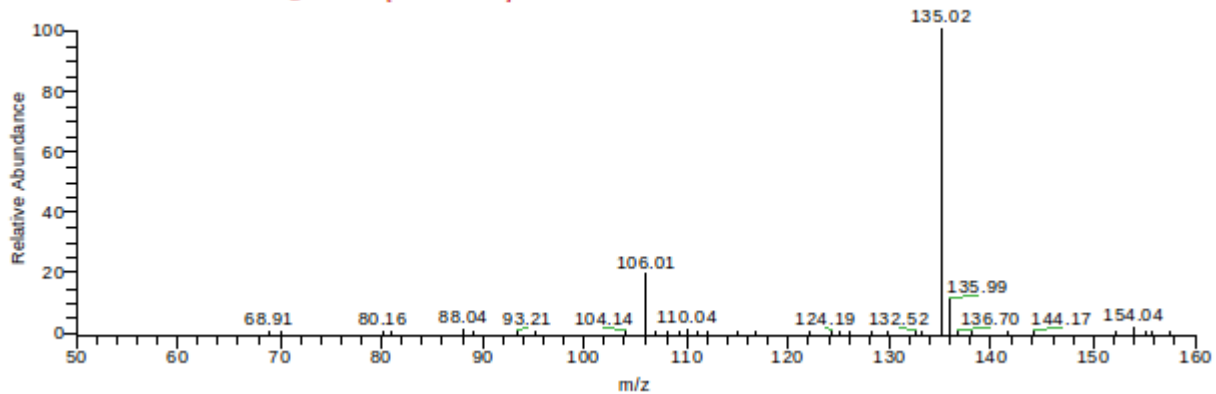
cell extract  
+  
chemical

data85 #325-353 RT: 2.01-2.19 AV: 7 NL: 5.36E4  
F: ITMS + c ESI Full ms2 153.00@cid35.00 [50.00-160.00]

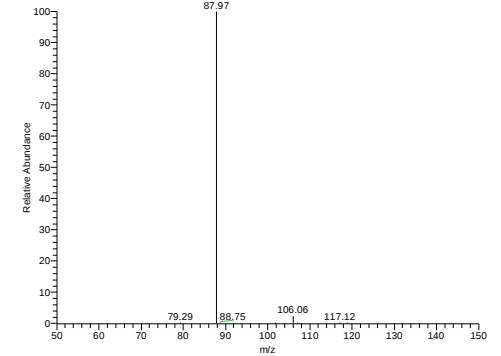


chemical  
reference

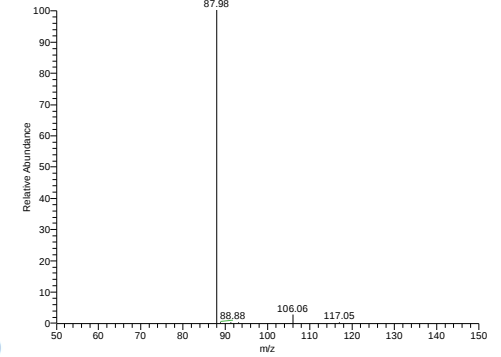
data87 #321-350 RT: 2.00-2.20 AV: 8 NL: 6.29E4  
F: ITMS + c ESI Full ms2 153.00@cid35.00 [50.00-160.00]



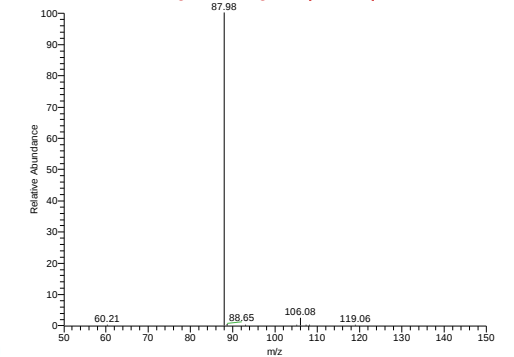
data83 #306-337 RT: 2.01-2.19 AV: 7 NL: 2.89E4  
F: ITMS + c ESI d Full ms3 153.00@cid35.00 135.00@cid35.00 [50.00-150.00]



data85 #325-353 RT: 2.09-2.19 AV: 5 NL: 2.34E4  
F: ITMS + c ESI d Full ms3 153.00@cid35.00 135.00@cid35.00 [50.00-150.00]



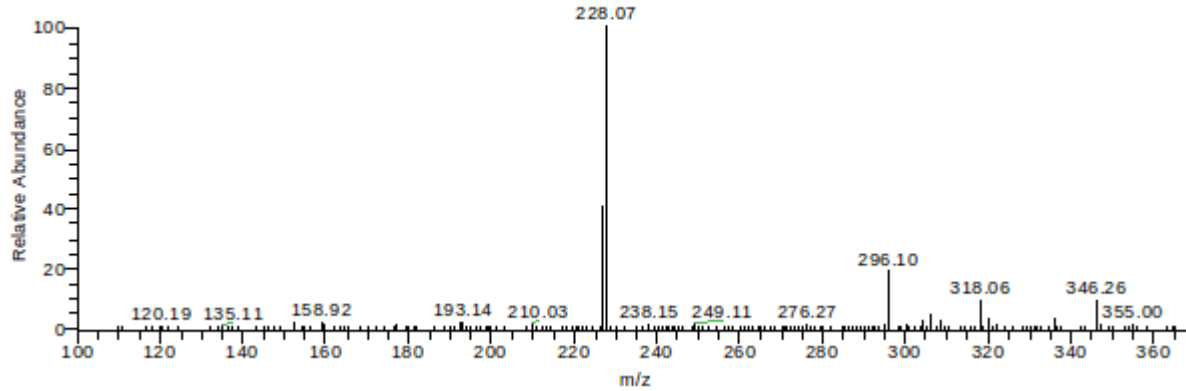
data87 #321-350 RT: 2.02-2.18 AV: 7 NL: 1.70E4  
F: ITMS + c ESI d Full ms3 153.00@cid35.00 135.01@cid35.00 [50.00-150.00]



# GMP M+H[1+], m/z 364.07

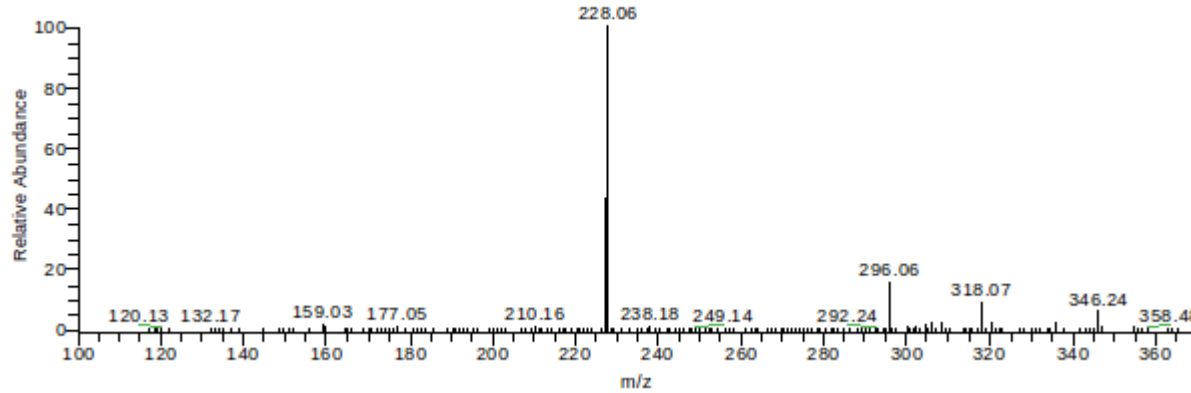
cell extract

data31 #170-217 RT: 1.30-1.59 AV: 24 NL: 3.38E2  
F: ITMS + c ESI Full ms2 364.00@cid35.00 [100.00-370.00]



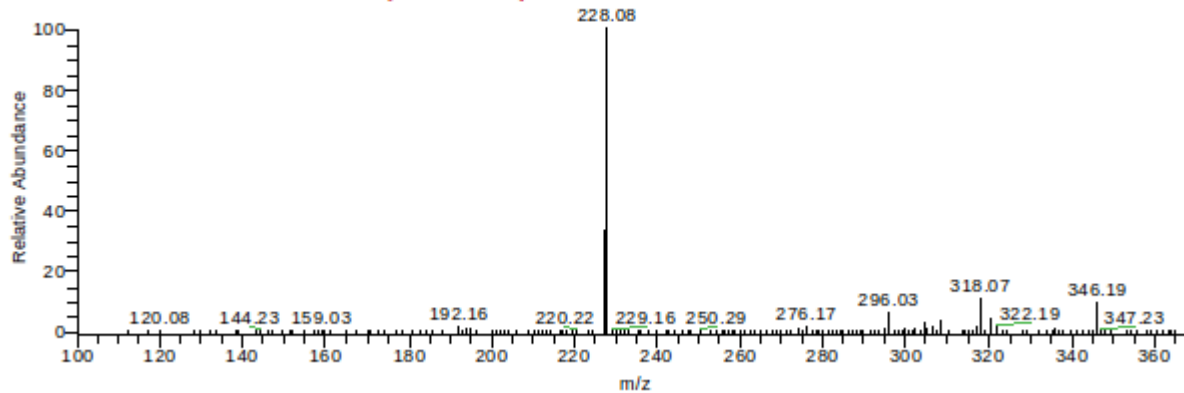
cell extract  
+  
chemical

data33 #201-246 RT: 1.31-1.59 AV: 21 NL: 3.88E2  
F: ITMS + c ESI Full ms2 364.00@cid35.00 [100.00-370.00]

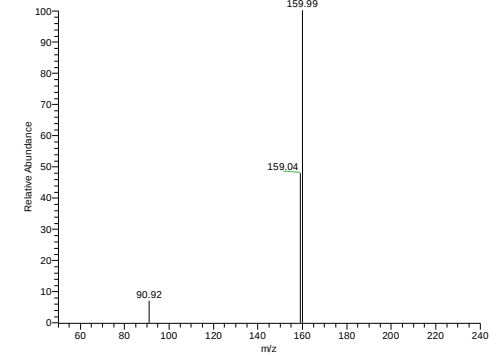


chemical  
reference

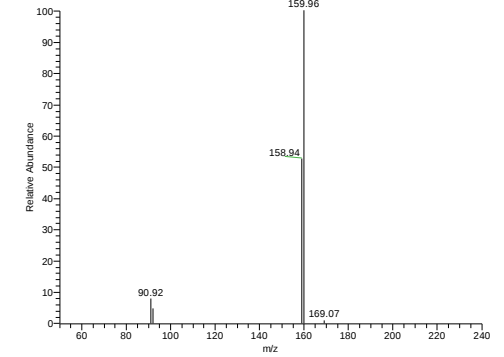
data73 #199-243 RT: 1.31-1.59 AV: 20 NL: 3.88E2  
F: ITMS + c ESI Full ms2 364.00@cid35.00 [100.00-370.00]



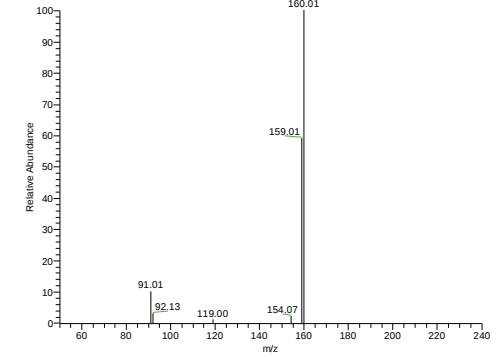
data31 #219 RT: 1.61 AV: 1 NL: 3.03E1  
F: ITMS + c ESI d Full ms3 364.00@cid35.00 228.11@cid35.00 [50.00-240.00]



data33 #201-246 RT: 1.52-1.56 AV: 3 NL: 5.90E1  
F: ITMS + c ESI d Full ms3 364.00@cid35.00 228.04@cid35.00 [50.00-240.00]



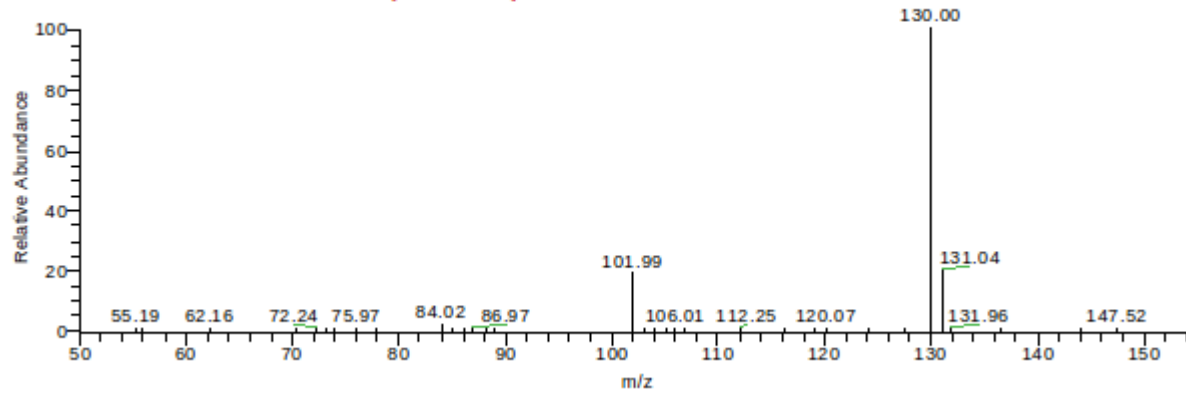
data73 #199-243 RT: 1.39-1.46 AV: 4 NL: 3.67E1  
F: ITMS + c ESI d Full ms3 364.00@cid35.00 228.00@cid35.00 [50.00-240.00]



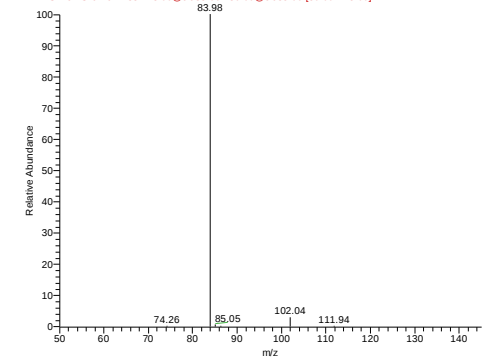
# Glutamate M+H[1+], m/z 148.0601

data39 #295-315 RT: 1.93-2.05 AV: 6 NL: 1.92E5  
F: ITMS + c ESI Full ms2 148.00@cid35.00 [50.00-155.00]

cell extract

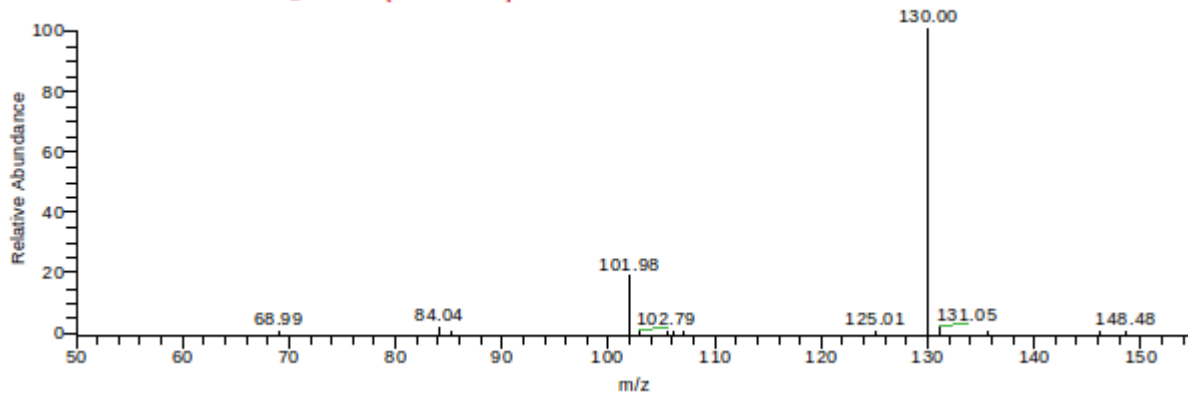


data39 #295-315 RT: 1.96-2.03 AV: 3 NL: 5.46E4  
F: ITMS + c ESI d Full ms3 148.00@cid35.00 130.00@cid35.00 [50.00-145.00]

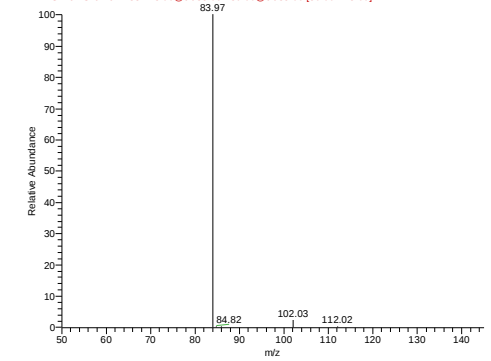


data41 #300-321 RT: 1.94-2.04 AV: 5 NL: 3.07E6  
F: ITMS + c ESI Full ms2 148.00@cid35.00 [50.00-155.00]

cell extract  
+  
chemical

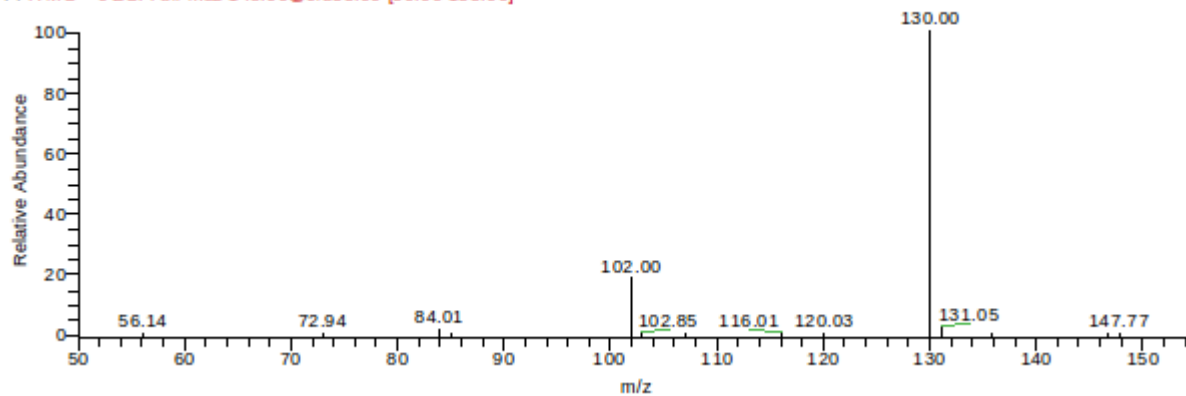


data41 #300-321 RT: 2.00-2.04 AV: 2 NL: 8.89E5  
F: ITMS + c ESI d Full ms3 148.00@cid35.00 130.00@cid35.00 [50.00-145.00]

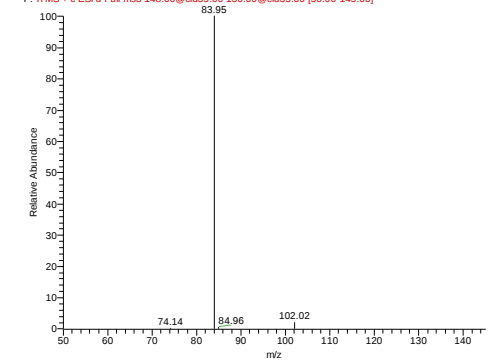


data81 #311-332 RT: 1.93-2.04 AV: 6 NL: 3.86E6  
F: ITMS + c ESI Full ms2 148.00@cid35.00 [50.00-155.00]

chemical  
reference



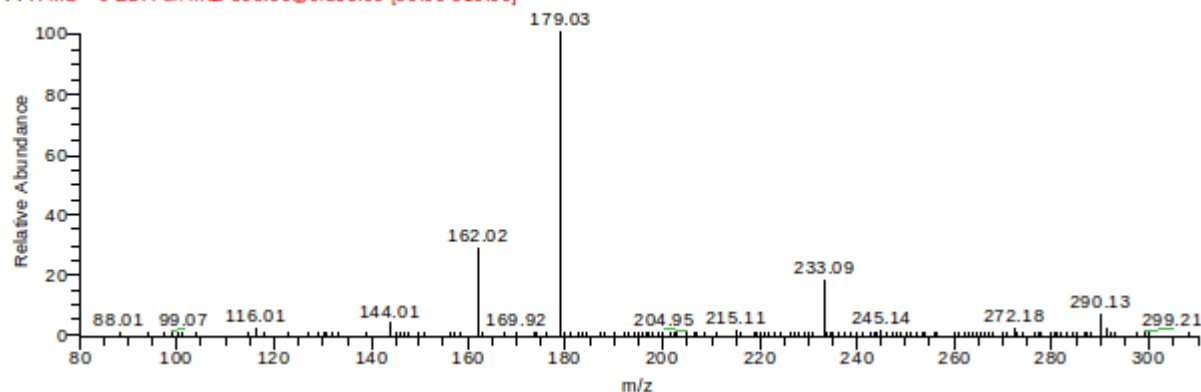
data81 #311-332 RT: 1.93-2.00 AV: 2 NL: 1.05E6  
F: ITMS + c ESI d Full ms3 148.00@cid35.00 130.00@cid35.00 [50.00-145.00]



# Glutathione M+H[1+], m/z 308.0896

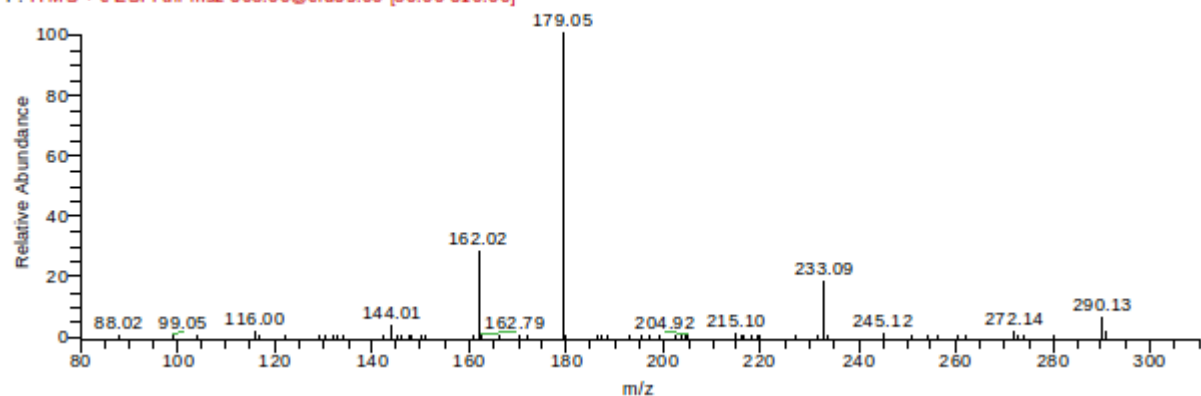
cell extract

data07 #387-432 RT: 2.51-2.80 AV: 12 NL: 6.57E4  
F: ITMS + c ESI Full ms2 308.00@cid35.00 [80.00-310.00]



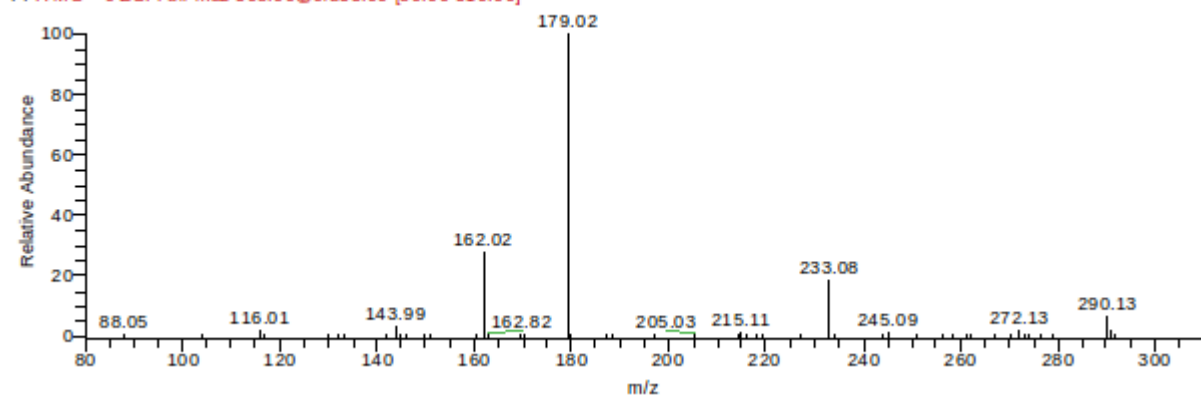
cell extract  
+  
chemical

data09 #397-449 RT: 2.51-2.79 AV: 13 NL: 3.41E6  
F: ITMS + c ESI Full ms2 308.00@cid35.00 [80.00-310.00]

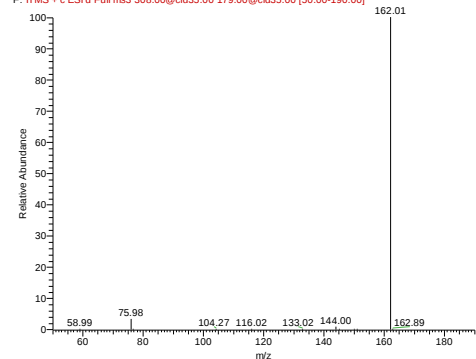


chemical  
reference

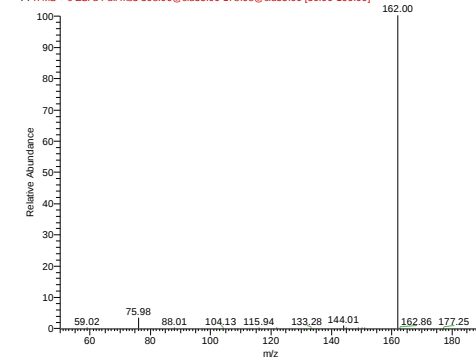
data49 #396-448 RT: 2.51-2.79 AV: 13 NL: 3.79E6  
F: ITMS + c ESI Full ms2 308.00@cid35.00 [80.00-310.00]



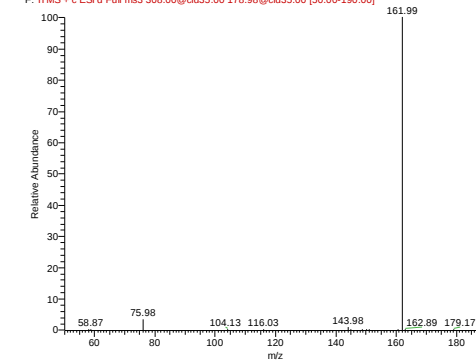
data07 #387-432 RT: 2.52-2.78 AV: 11 NL: 3.69E4  
F: ITMS + c ESI d Full ms3 308.00@cid35.00 179.00@cid35.00 [50.00-190.00]



data09 #397-449 RT: 2.52-2.80 AV: 13 NL: 1.85E6  
F: ITMS + c ESI d Full ms3 308.00@cid35.00 178.98@cid35.00 [50.00-190.00]



data49 #396-448 RT: 2.50-2.80 AV: 14 NL: 2.06E6  
F: ITMS + c ESI d Full ms3 308.00@cid35.00 178.98@cid35.00 [50.00-190.00]

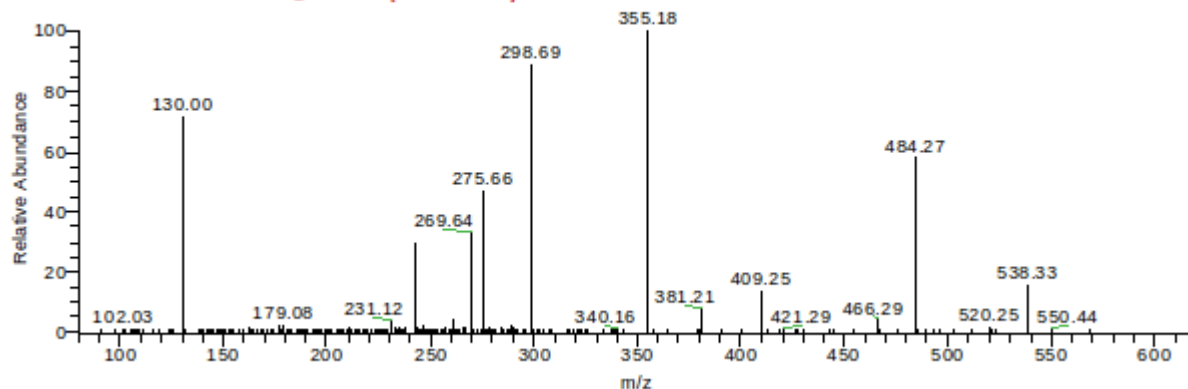




# GSSG M+2H[2+], m/z 307.0829

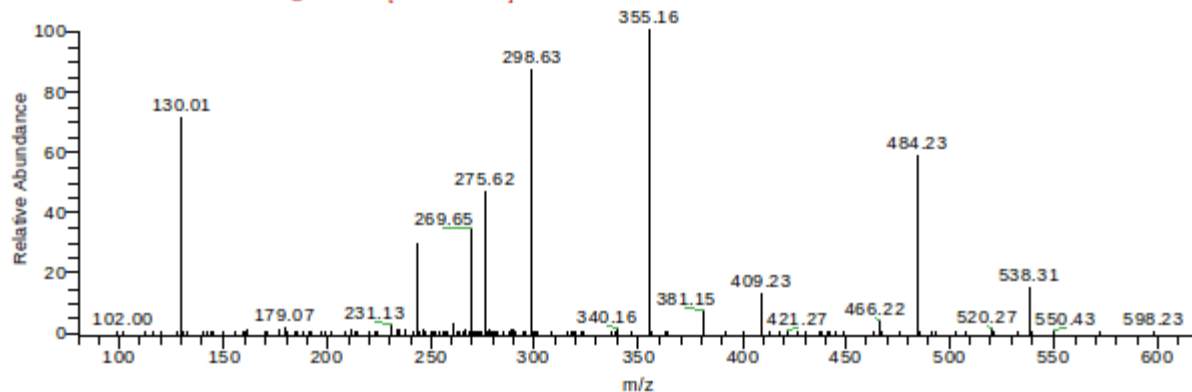
cell extract

data03 #1021-1047 RT: 6.80-6.99 AV: 7 NL: 7.76E3  
F: ITMS + c ESI Full ms2 307.00@cid35.00 [80.00-620.00]



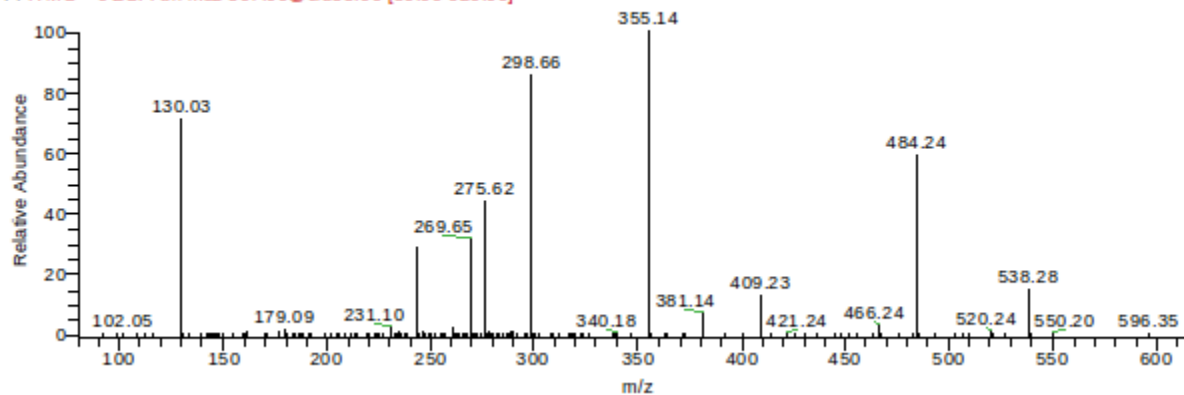
cell extract  
+  
chemical

data05 #1030-1064 RT: 6.81-7.00 AV: 9 NL: 1.93E6  
F: ITMS + c ESI Full ms2 307.00@cid35.00 [80.00-620.00]

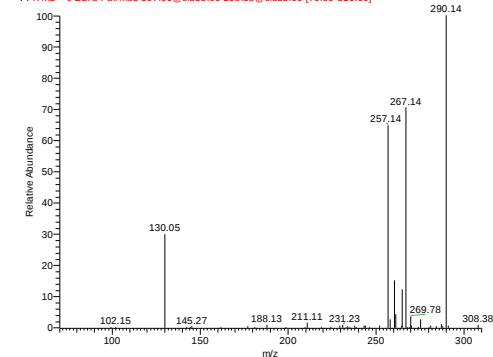


chemical  
reference

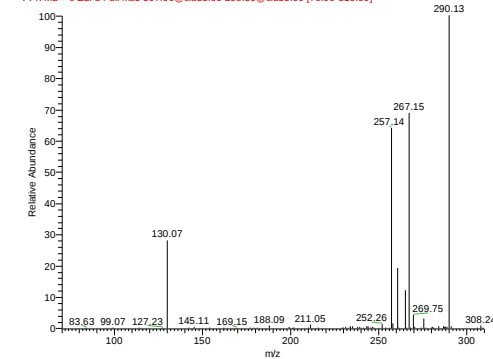
data45 #1034-1067 RT: 6.80-6.99 AV: 9 NL: 1.13E6  
F: ITMS + c ESI Full ms2 307.00@cid35.00 [80.00-620.00]



data03 #1021-1047 RT: 6.82-6.98 AV: 6 NL: 1.22E3  
F: ITMS + c ESI d Full ms3 307.00@cid35.00 298.58@cid35.00 [70.00-310.00]



data05 #1030-1064 RT: 6.80-6.99 AV: 9 NL: 2.91E5  
F: ITMS + c ESI d Full ms3 307.00@cid35.00 298.59@cid35.00 [70.00-310.00]



data45 #1034-1067 RT: 6.81-6.98 AV: 8 NL: 1.66E5  
F: ITMS + c ESI d Full ms3 307.00@cid35.00 298.55@cid35.00 [70.00-310.00]

