

Supplement Figure 1

C 560 $\beta 3$

R 560 $\beta 3$

A
Megs in vitro

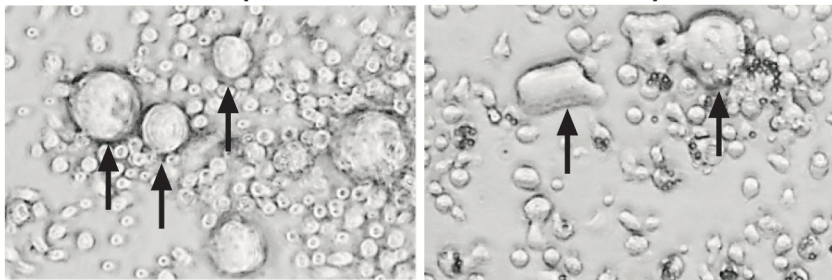


Figure Legend

Supplement Figure 1. Megakaryocyte Structure was Abnormal Following Tissue Culture of R560 $\beta 3$ -transduced bone marrow.

To determine if cellular morphology was altered, lentivirus-transduced murine bone marrow was induced with cytokines to form megakaryocytes *in vitro*. After 4 days in culture, light microscopic analysis (Magnification 400x) revealed that the C560 $\beta 3$ megakaryocytes appeared large and round in shape as anticipated (**Arrow, Left Panel**). In contrast, mice tx with R560 $\beta 3$ transduced bone marrow had formed megakaryocytes that were large but appeared very irregular in shape (**Arrow, Right Panel**)..