

Figure 1

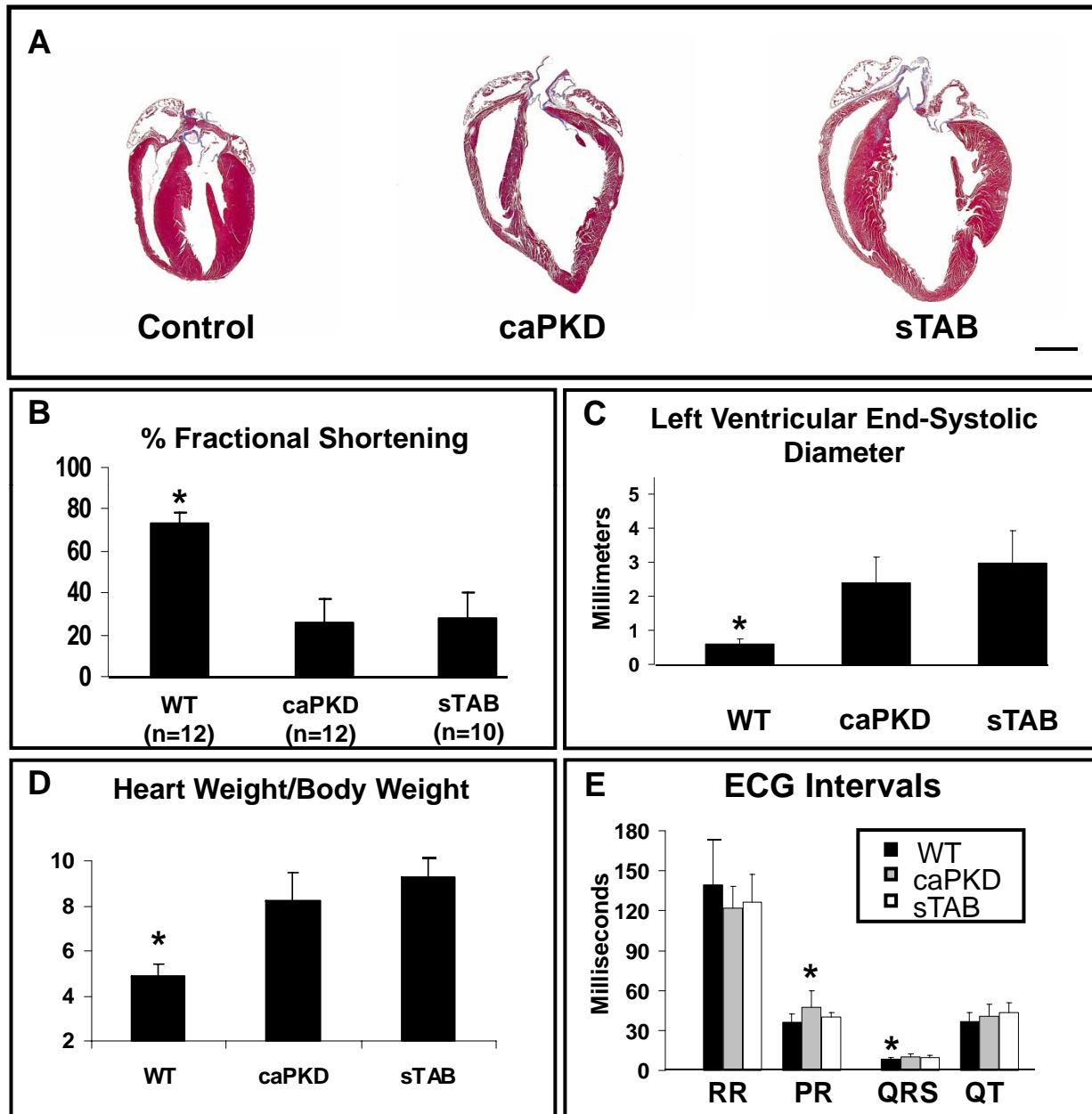


Figure 2

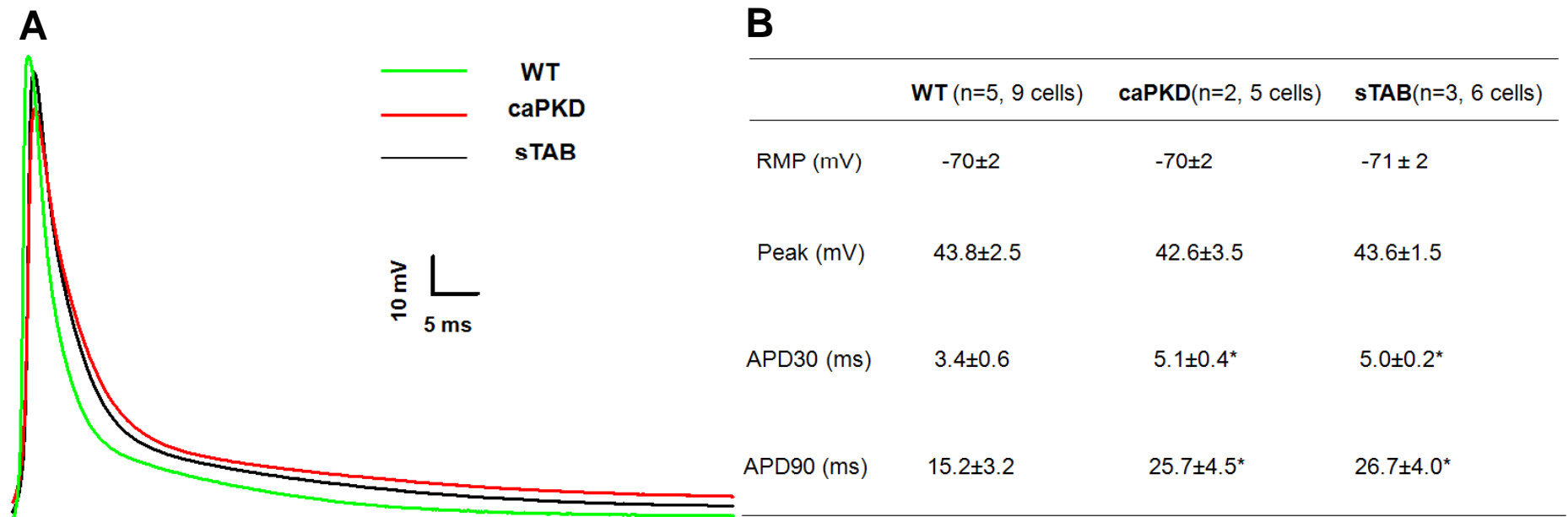


Figure 3

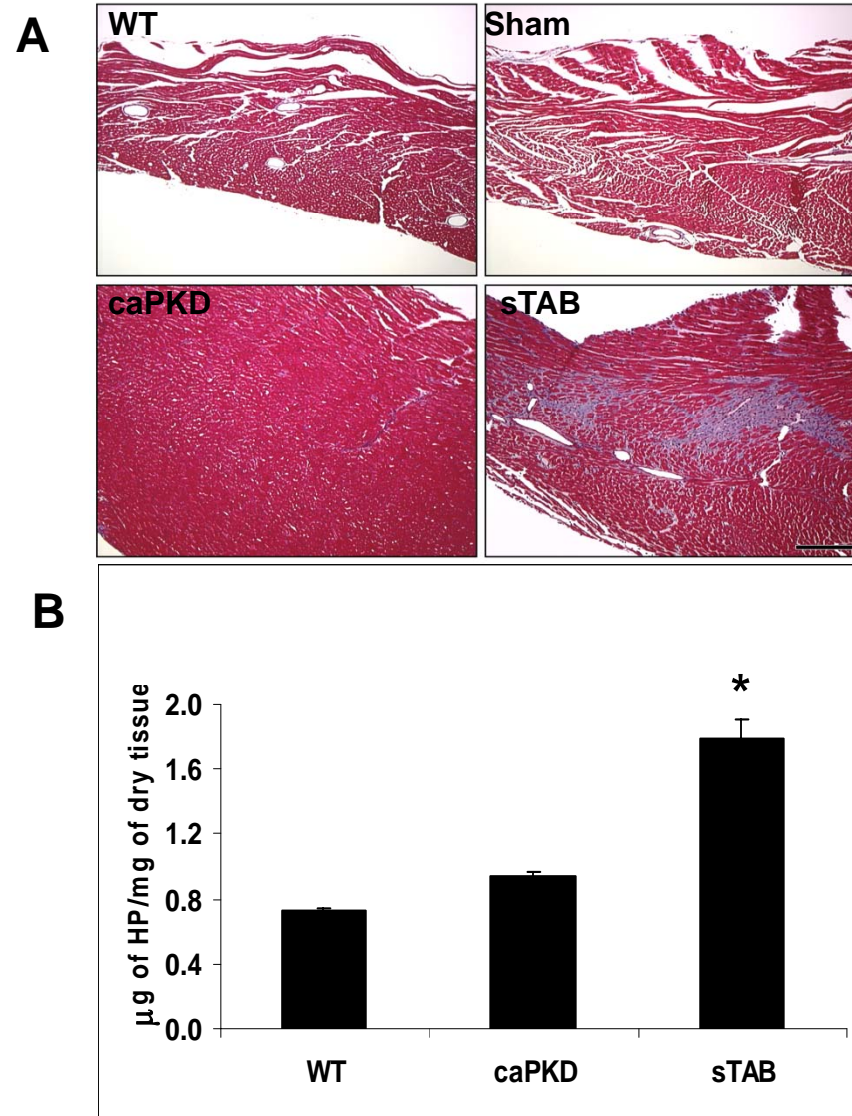


Figure 4

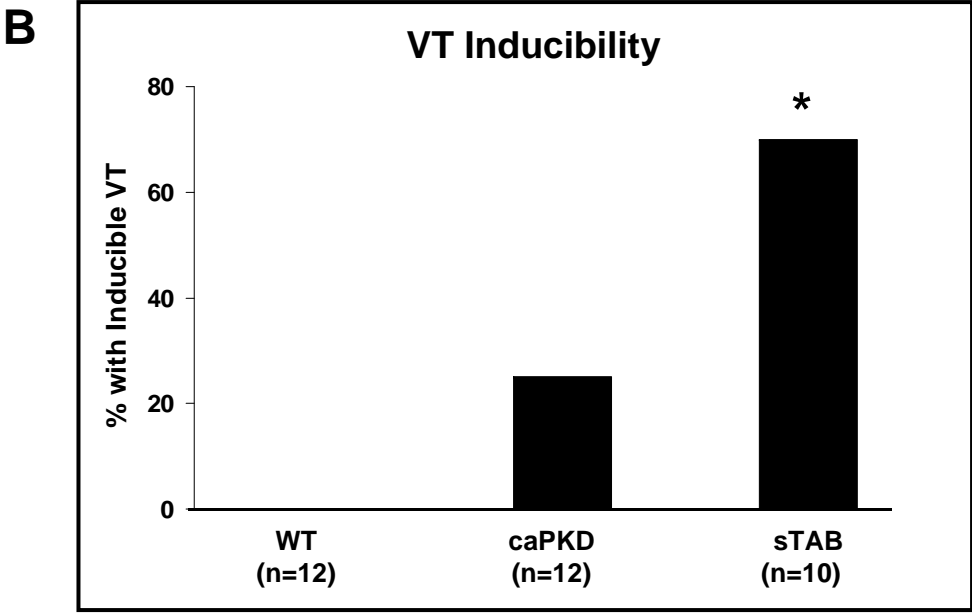
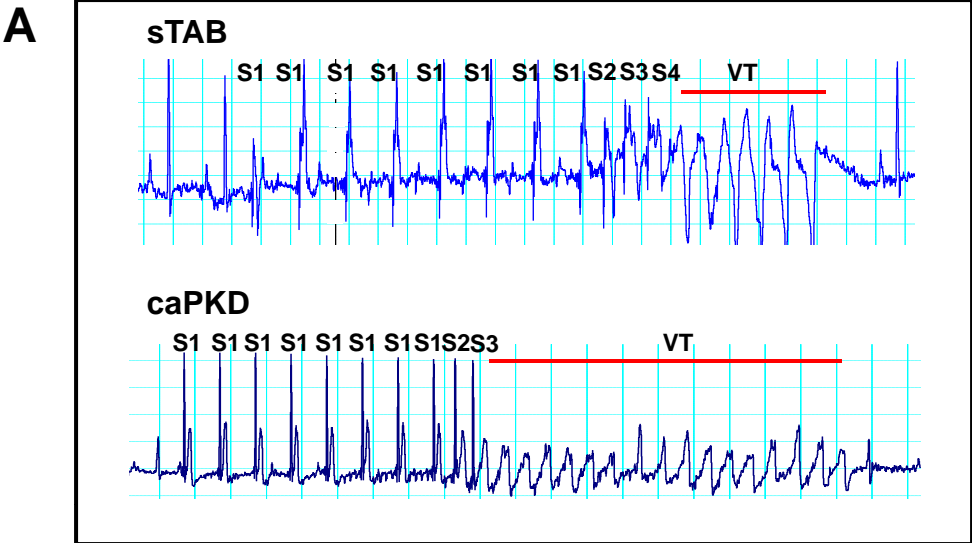
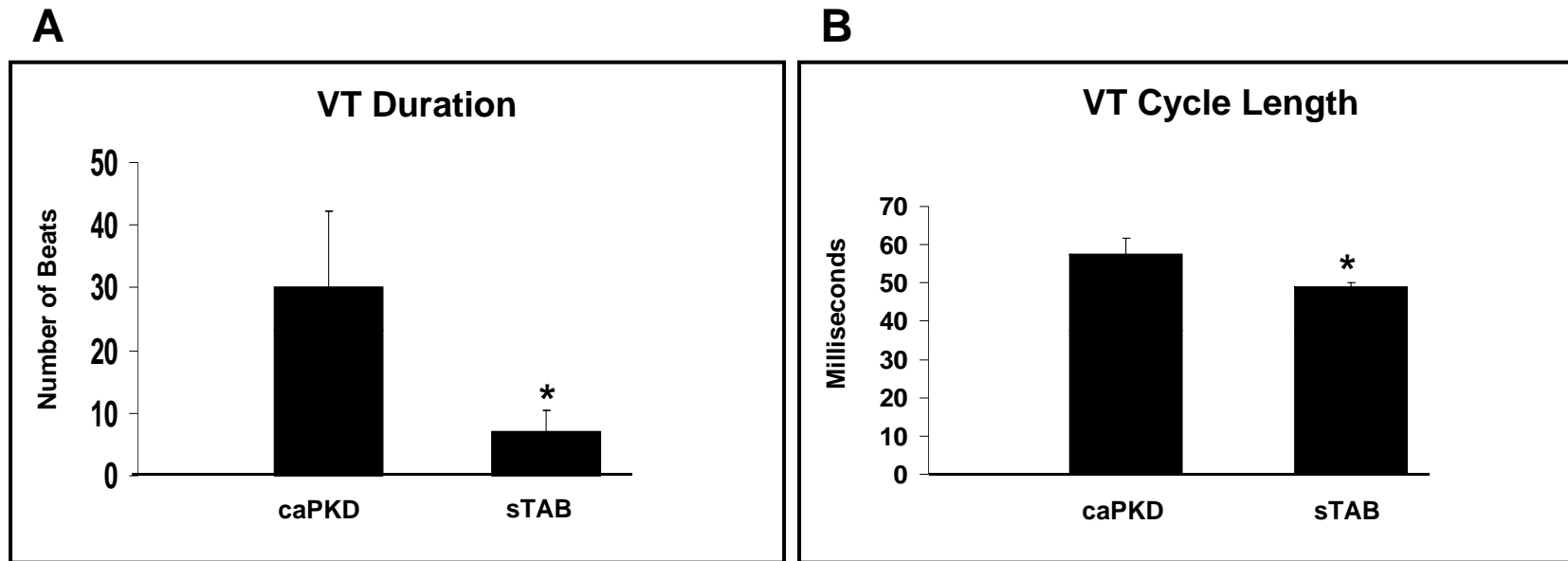


Figure 5



SupplementalTable 1

Electrophysiological parameters in WT, sTAB and caPKD mice

	WT (n=12)	sTAB (n=10)	caPKD (n=12)
Heart rate (bpm)	451.8±91.5	447.6±82.5	492.1±72.3
PR Interval (msec)	35.9±6.7	40.±3.41	47.5±12.5*
QRS duration (msec)	8.4±1	9.75±1.44	10.4±2.2
QT Interval (msec)	36.8±6.9	43.17±7.39	40.67±9.15
V capture threshold (mA)	23.8±7.4	25±13.2	31.67±18.4
VERP (msec)	39.6±7.8	35.83±7.36	47.92±11.4#
VT duration (number of beats)	n/a	7±3.46	30±12.2#
VT duration (msec)	n/a	373.33±200	1833±723#
VT cycle length (msec)	n/a	49±1	57.67±4.04#

VERP=Ventricular effective refractory period, VT=Ventricular tachycardia

* p<0.05 compared with WT

p<0.05 compared with sTAB