



## Long Term Visual Outcomes of Glaucoma Patients Following a Single Episode of Transscleral Cyclodiode Laser Treatment

Journal:	<i>BMJ Open</i>
Manuscript ID:	bmjopen-2013-002793
Article Type:	Research
Date Submitted by the Author:	26-Feb-2013
Complete List of Authors:	Zhekov, Ivailo; Cambridge University Teaching Hospitals NHS Foundation Trust, School of Clinical Medicine Janjua, Razia; Cambridge University Teaching Hospitals NHS Foundation Trust, Shahid, Humma; Cambridge University Teaching Hospitals NHS Foundation Trust, Sarkies, Nicholas; Cambridge University Teaching Hospitals NHS Foundation Trust, Martin, Keith; Cambridge University Teaching Hospitals NHS Foundation Trust, White, Andrew; Cambridge University Teaching Hospitals NHS Foundation Trust, Cambridge, ; Centre for Vision Research, Westmead Millennium Institute,
<b>Primary Subject Heading</b>:	Ophthalmology
Secondary Subject Heading:	Ophthalmology
Keywords:	OPHTHALMOLOGY, Glaucoma < OPHTHALMOLOGY, Neuro-ophthalmology < OPHTHALMOLOGY

SCHOLARONE™  
Manuscripts

## Long Term Visual Outcomes of Glaucoma Patients Following a Single Episode of Transscleral Cyclodiode Laser Treatment

Ivailo Zhekov MA<sup>1</sup>, Razia Janjua MA MRCOph<sup>1</sup>, Humma Shahid DM MA MRCOph<sup>1</sup>, Nicholas Sarkies MA MRCP MRCOph<sup>1</sup>, Keith R Martin DM MA MRCP FRCOph<sup>1,2</sup> and Andrew JR White FRANZCO PhD<sup>1,2+</sup>

1: Cambridge University Teaching Hospitals NHS Foundation Trust, Cambridge, UK

2: NIHR Biomedical Research Centre, University of Cambridge, UK

+: Current Address: Centre for Vision Research, Westmead Millennium Institute, Sydney Australia

**Objectives:** To investigate the efficacy of a single cyclodiode laser photocoagulation treatment for refractory glaucoma and its effect on visual outcome in patients with good visual potential as well as to evaluate possible predictive factors in establishing optimal treatment parameters.

**Design:** Retrospective observational study

**Setting:** Tertiary referral centre

**Participants:** The notes of 87 patients with refractory glaucoma who underwent cyclodiode photocoagulation as a first surgical intervention over a 7-year period.

**Main outcome measures:** Maintenance of intraocular pressure reduction, number of medications and visual acuity outcomes post-treatment.

**Results:** The mean intraocular pressure (IOP) after a single treatment decreased from 39.5 +/-1.3 mmHg to 17.8 +/-1.5 mmHg after a 6-week follow-up period (P<0.0001). This reduction in IOP was maintained over a 3-year period. Here 61.5% of the patients were able to reduce the number of medications used, with mean reduction from 2.6 to 1.5 medications (P<0.05). Mean initial visual field loss prior to treatment was 8.74dB and at 6 months post-treatment was measured at 9.06dB (P>0.05) suggesting no significant overall change. The visual acuity remained unchanged or improved for 83.6% of the patients (P>0.05) with relatively good visual potential (average vision preoperatively was 0.57 logMAR). Hypotony occurred in 5.3% of the patients. No patients required enucleation or evisceration.

**Conclusion:** A single session of cyclodiode laser therapy was sufficient to achieve IOP reduction in the majority of the patients with refractory glaucoma. The majority were able to maintain the IOP reduction over a 3-year period without the need for a

1  
2  
3 further surgical intervention. Additionally, over 80% of the patients in our study were  
4 able to maintain their baseline visual acuity. These results support the view that a  
5 single cyclodiode treatment can be sufficient in achieving long term IOP control and  
6 may be considered in eyes with relatively good visual potential.  
7  
8  
9

### 11 **Introduction:**

13 Transscleral diode laser cyclophotocoagulation (cyclodiode) has been established as a  
14 relatively safe and effective intervention for glaucoma.<sup>1-6</sup> Cyclodiode is often used in  
15 refractory glaucoma, where alternative surgical approaches, such as antiproliferative  
16 augmented trabeculectomy and tube shunt surgery, may sometimes be judged less  
17 appropriate, for example in eyes with poor visual potential. Additionally, cyclodiode  
18 has been shown to be safer than other cyclodestructive procedures, such as Nd:YAG  
19 laser cyclophotocoagulation and cyclocryotherapy, which present a greater risk of  
20 hypotony and phthisis resulting from excessive ciliary body ablation.<sup>7-9</sup> However, the  
21 outcome of cyclodiode therapy is unpredictable and multiple treatments may be  
22 required to achieve long term intraocular control.<sup>10-11</sup>  
23  
24  
25  
26  
27  
28  
29  
30  
31  
32  
33  
34  
35  
36  
37

38 Currently there is no general consensus for an optimum treatment protocol for  
39 cyclodiode. Data for outcomes following cyclodiode laser vary considerably in the  
40 literature.<sup>12</sup> Parameters such as total delivered energy per eye, number of laser  
41 applications per treatment, pulse power, pulse duration and proportion of  
42 circumference treated have been analysed with varying results.<sup>13-17</sup> Furthermore,  
43 cyclodiode therapy has often been reserved for eyes with poor vision due to reports  
44 that it can lead to decrease in visual acuity.<sup>18</sup>  
45  
46  
47  
48  
49  
50  
51  
52  
53  
54

55 The purpose of this study was to evaluate the long-term safety and efficacy of a single  
56 episode of transscleral diode laser cyclophotocoagulation for raised intraocular  
57  
58  
59  
60

1  
2  
3 pressure in patients with good visual potential at a UK tertiary glaucoma referral  
4  
5 centre. Additionally, we aim to identify possible predictive factors that could establish  
6  
7 optimal treatment parameters by investigating the relation between laser energy  
8  
9 delivered and degrees treated to the long-term maintenance in IOP reduction.  
10  
11

### 12 13 14 **Methods:**

15  
16 The departmental electronic medical record system (Medisoft Ophthalmology,  
17  
18 Medisoft Ltd Leeds UK) and operating theatre log books were examined for the  
19  
20 period 09/2004 to 06/2011 to identify patients who had undergone cyclodiode  
21  
22 treatment as a first surgical intervention.  
23  
24

25  
26  
27 All patients were assessed for their response to treatment and those who did not  
28  
29 achieve the target IOP reduction were taken as treatment failures. The patients who  
30  
31 required either repeat cyclodiode or alternative treatments for IOP control during the  
32  
33 follow up period were also considered as treatment failures from the time of the  
34  
35 additional surgical intervention. They were not further assessed for maintenance of  
36  
37 post-operative IOP as any additional surgical interventions would interfere with the  
38  
39 interpretation of the IOP maintenance data.  
40  
41  
42

43  
44  
45 Cyclophotocoagulation was performed in the Operating Theatre under subtenon,  
46  
47 peribulbar or general anaesthesia using a standard treatment protocol. A lid speculum  
48  
49 was placed to achieve adequate exposure for probe placement all around the limbus  
50  
51 and a squint hook was used to rotate the globe to achieve exposure in those with  
52  
53 narrow palpebral apertures. All treatments were performed using Oculight Sx  
54  
55 semiconductor diode 810nm laser and the contact G Probe™ (IRIS Medical  
56  
57  
58  
59  
60

1  
2  
3 Instruments, Inc.). Standard settings were 1500ms duration and 1500mW power. The  
4  
5 energy levels were not routinely titrated for ‘pops’ and the power settings were left at  
6  
7 1500mW. Transillumination was performed for ciliary body identification. Usually 10  
8  
9 applications were applied per quadrant for 180 to 360°, with the applications spaced  
10  
11 approximately one-half width of the probe tip apart. The 3 and 9 o’clock positions  
12  
13 were avoided to spare the long ciliary nerves. Postoperative steroid drops were used  
14  
15 for 4 weeks. Glaucoma medications were continued after cyclodiode treatment and  
16  
17 adjusted later as required.  
18  
19

20  
21  
22  
23 Success was defined as an intraocular pressure (IOP) of 6–21 mmHg at the last  
24  
25 follow-up visit without the need for oral acetazolamide and an IOP reduction of at  
26  
27 least 30% compared with pre-treatment. Hypotony was defined as an IOP of 5 mmHg  
28  
29 or less. The laser energy used was classified as either low energy (median value 45  
30  
31 +/- 11.47 J, range 22.5-67.5J) or high energy (median value 90 +/- 13.42 J, range  
32  
33 67.5-130J). The follow up period in IOP measurements was 3 years. Visual acuity  
34  
35 (VA) prior to treatment was assessed for all patients using LogMAR scale. Visual  
36  
37 field testing was performed with the Humphrey Visual Field Analyser™ using the  
38  
39 SITA 24-2 threshold programme. Mean deviation of visual field sensitivity loss in  
40  
41 decibels (MD) was taken as our surrogate measure of visual field loss.  
42  
43  
44  
45

46  
47 Data was analysed using Microsoft Excel™ and where appropriate a Student’s t-test  
48  
49 was used to calculate p-values. R<sup>2</sup> values were derived from linear regression analyses  
50  
51 using the same programme. Kaplan-Meier ‘survival’ analysis was done using  
52  
53 GraphPad Prism 5.0™. Approval for the audit was granted by the Cambridge  
54  
55  
56  
57  
58  
59  
60

University Hospitals NHS Foundation Trust Ethics Committee. The tenets of the Declaration of Helsinki were observed.

## Results:

From our records, we were able to identify 104 patients who underwent cyclodiode therapy as a first surgical treatment modality in the period from 09/2004 to 06/2011 at Addenbrooke's Hospital, Cambridge. Of these, complete medical records were available for 87 patients with follow up data available for up to 3 years. Preoperative patient data is summarised in **Table 1**.

**Table 1.** Baseline demographics and clinical parameters

	Category	Cases (n=87)
Mean age, yrs		66.3
Sex (n (%))	Male	49 (56.3%)
	Female	38 (43.7%)
Preoperative VA, mean		0.57 LogMAR
IOP (mmHg), mean (SD)		39.5 +/- 1.3 mmHg
Mean number of glaucoma medications		2.6
Glaucoma type (n (%))	Primary open angle glaucoma (POAG)	33 (37.9%)
	Primary angle closure glaucoma (PACG)	6 (6.9%)
	Neovascular glaucoma	25 (28.7%)
	Uveitic glaucoma	5 (5.7%)
	Secondary open angle glaucoma (SOAG)- Other	18 (20.8%)

### Change in Intraocular Pressure (Fig.1A)

Mean intraocular pressure (IOP) decreased significantly from 39.5 mmHg (SE 1.26) before cyclodiode therapy to 17.8 mmHg (SE 1.51) at 6 weeks post-treatment, an observable reduction of 45.1 % ( $P < 0.0001$ ). There was a mild linear correlation between preoperative IOP and observed IOP reduction ( $R^2 = 0.32$ ).

### Safety and Efficacy of Cyclodiode Treatment (Fig.1B)

An IOP reduction greater than 30% of initial IOP was achieved at 6 weeks in 67.7 % of the patients, while hypotony occurred in only 5 cases or 5.3% of patients ( $p < 0.05$ ).

None of the patients experienced post-treatment uveitis or required further treatment or enucleation for pain symptoms. The data for the patients who developed hypotony such as initial diagnosis, treatment settings, IOP measurements and VA outcome is summarised in **Table 2**.

**Table 2.** Details of hypotony patients

	Diagnosis	Energy used	Degrees treated	Peak IOP (mmHg)	Postop IOP (mmHg)	Hypotony duration	Last IOP (mmHg)	Preop VA (LogMAR)	Last VA (LogMAR)
PT1	Neovascular	90J	180	58	2	6 months	10	0.78	PL
PT2	Neovascular	90J	360	41	4	6 months	32	PL	NPL
PT3	Neovascular	120J	360	40	2	6 months	9	0.6	HM
PT4	SOAG(other)	120J	360	26	3	6 months	8	1.0	CF
PT5	SOAG(other)	120J	360	48	2	-	3	HM	HM

### Long term maintenance of IOP reduction after a single cyclodiode treatment

(Fig.1C)

The IOP reduction was maintained long term over the period of 3 years in the majority of our patients. Measurements were taken pre-operatively ( $39.5 \pm 1.3$  mmHg) as well as post-operatively at 6 weeks ( $17.8 \pm 1.5$  mmHg) and 6 months ( $19.6 \pm 1.5$  mmHg) for all patients. Patients who required additional procedures in that eye post-treatment were excluded from further analysis from the time point of additional intervention as it would artificially lower their IOP measurements. The follow-up measurements at 1 year (18.9 mmHg), 2 year (22.1 mmHg) and 3 years (21.7 mmHg) were all after a single cyclodiode treatment.

1  
2  
3 **Kaplan-Meier analysis of IOP reduction ‘survival’ following a single cyclodiode**  
4 **treatment (Fig.2)**  
5

6  
7 Success was defined as an intraocular pressure (IOP) of 6–21 mmHg at the last follow  
8 up visit without the need for oral acetazolamide and an IOP reduction of at least 30%  
9 compared with preoperatively. The proportion of patients to maintain the desired IOP  
10 reduction after a single cyclodiode treatment without the need for further IOP  
11 lowering intervention in our study was 67.7% at 6 weeks post-operatively, 66.2% at 6  
12 months, 63% at 1 year, 61.2% at 2 years and 61.2% at 3 years. Of the patients who  
13 responded to treatment at 6 weeks, 90.4% were able to maintain the IOP reduction  
14 over a period of 3 years.  
15  
16  
17  
18  
19  
20  
21  
22  
23  
24  
25  
26

27 **Cyclodiode effect on glaucoma medications (Fig.3A)**  
28

29 A significant proportion of the patients (61.5%) were able to decrease the number of  
30 medications they are taking for IOP control following cyclodiode. A decrease of 2  
31 medications or more was achieved by 34.6% of patients, while 26.9% of patients  
32 decreased their medication by one. Overall, the average number of medications  
33 decreased from 2.6 before cyclodiode treatment to 1.5 medications after cyclodiode  
34 treatment (P<0.05).  
35  
36  
37  
38  
39  
40  
41  
42  
43  
44

45 **Change in visual acuity (Fig.3B)**  
46

47 A single episode of cyclodiode treatment had no significant effect on visual acuity  
48 (VA). Mean VA measurements changed from 0.5720 Log MAR units before  
49 cyclodiode therapy to 0.5408 Log MAR units post treatment, which was not  
50 statistically significant (P>0.05). The data analysis was performed on 47 patients  
51 (54.1%), who had clearly annotated numerical values for their VA measurements both  
52  
53  
54  
55  
56  
57  
58  
59  
60



1  
2  
3 preoperatively and postoperatively. The boxed numerals in the graph represent the  
4  
5 number of values at the same point.  
6  
7

### 8 9 **Change in visual fields (Fig.3C)**

10  
11 The average visual field sensitivity remained almost unchanged with an average MD  
12  
13 value of -8.74 dB pre-treatment compared to MD value of -9.05 dB at 6 months post-  
14  
15 treatment, which was not statistically significant ( $P>0.05$ ). The data analysis was  
16  
17 performed on 36 patients (41.3%), who had clearly annotated numerical values for  
18  
19 their visual fields measurements both pre-operatively and post-operatively.  
20  
21  
22  
23  
24

### 25 **Effect of laser energy on IOP reduction (Fig.4A)**

26  
27 Of the patients that received high energy treatment (90J), 80.3% obtained pressure  
28  
29 reduction of  $>30\%$  of initial IOP compared with 56.8% in the patients that received  
30  
31 low energy treatment (45J).  
32  
33  
34  
35

### 36 **Effect of laser energy on visual acuity (Fig.4B)**

37  
38 Of the patients that received high energy treatment (90J), 18.6% noted improvement  
39  
40 of the equivalent of at least 1 Snellen line compared with 6.7% in the patients that  
41  
42 received low energy treatment.  
43  
44  
45  
46

### 47 **Effect of degrees treated on IOP reduction (Fig.4C)**

48  
49 Of the patients that underwent 360 degrees treatment, 71.4% obtained pressure  
50  
51 reduction greater than 30% of initial IOP compared with 55% of the patients that  
52  
53 underwent 180 degree treatment.  
54  
55  
56  
57  
58  
59  
60

### Effect of degrees treated on visual acuity (Fig.4D)

Of the patients that underwent 360 degrees treatment, 20.9% noted improvement of the equivalent of at least 1 Snellen line compared with 5.5% of the patients underwent 180 degree treatment.

### Discussion:

The results of this retrospective analysis are supportive of a single cyclodiode treatment being effective in management of refractory glaucoma. Although this is a retrospective rather than a prospective study, we aimed to avoid selection bias by including all patients either as success or failure of treatment. The patients who required additional surgical interventions were taken as failure from the time of additional intervention.

Our data show that 67.7% of the patients achieved an IOP reduction greater than 30% of presenting IOP at 6 weeks and 61.5% could reduce the number of medications by at least 1. Hypotony appears to be related to the type of glaucoma (with neovascular glaucoma associated with worse outcome) as well as to the number of degrees treated and total energy used. Indeed, the patients with neovascular glaucoma in our cohort were almost 4 times more likely to develop hypotony compared to any other types of glaucoma.

In our patients, the mean intraocular pressure (IOP) decreased significantly from 39.5 mmHg (SE 1.26) before cyclodiode therapy to 17.8 mmHg (SE 1.51) at 6 weeks post-treatment, an observable reduction of 45.1 % ( $P<0.05$ ). The results of the linear regression analysis indicate that there might be some predictive value in determining

1  
2  
3 IOP reduction based on initial IOP measurements such as the greatest reduction in  
4  
5 IOP is likely to be seen in patients with the highest IOP at the time of treatment ( $R^2 =$   
6  
7 0.32). A similar relationship was reported by Vernon et al., where eyes with IOP  
8  
9 greater than 30 mmHg were more likely to exhibit a pressure drop greater than 30%  
10  
11 of initial IOP.<sup>19</sup>  
12  
13

14  
15  
16 The IOP reduction was maintained long term in 61.2% of all patients in our study  
17  
18 after a single cyclodiode treatment. Of the patients who responded to treatment at 6  
19  
20 weeks, 90.4% were able to maintain the IOP reduction over a period of 3 years.  
21  
22 Similar sustainability of the mean IOP reduction postoperatively is also reported by  
23  
24 Bloom et al. and Kosoko et al., although in both these studies the follow up was  
25  
26 considerably shorter, the average time being less than 2 years.<sup>18,20</sup> The results from  
27  
28 our patient cohort suggest that a single session of cyclodiode therapy could potentially  
29  
30 be a viable initial treatment modality for maintaining a longer term IOP control in  
31  
32 patients with refractory glaucoma.  
33  
34  
35  
36  
37

38  
39 In our study, of the patients that received high energy treatment (90J), 80.3% obtained  
40  
41 an IOP reduction of greater than 30% of the initial IOP compared with 56.8% in the  
42  
43 patients receiving low energy treatment (45J). This is consistent with a meta-analysis  
44  
45 by Iliev et al., where comparing different laser protocols from different studies  
46  
47 suggested that the use of a low energy protocol potentially could result in the lowest  
48  
49 IOP reduction, the highest postoperative IOP and the highest retreatment rate  
50  
51 overall.<sup>17</sup> We also observed similar relationship when patients were assessed in regard  
52  
53 to the degrees treated rather than energy used. Here, of the patients that underwent  
54  
55  
56  
57  
58  
59  
60

1  
2  
3 360 degrees treatment, 71.4% obtained pressure reduction greater than 30% of initial  
4 IOP compared with 55% of the patients that underwent 180 degrees treatment.  
5  
6  
7

8  
9  
10 Hypotony was the most common long-term complication in our study (5.3%), which  
11 is in accordance with other published reports.<sup>14</sup> In our cohort, the incidence of  
12 hypotony was much more likely with an eye with neovascular glaucoma (**Table 2**).  
13  
14 Murphy et al. also found a higher risk of hypotony in eyes with neovascular  
15 glaucoma, particularly if preoperative IOP was high and energy level used was  
16 greater.<sup>14</sup> This correlation between hypotony and higher energy used in cyclodiode is  
17 also observed in several other studies.<sup>12</sup> However, univariate regression analysis done  
18 by Murphy et al. shows that very high pre-treatment IOP alone, possibly causing  
19 ciliary body ischaemia, could be responsible for the high incidence of hypotony in the  
20 patients receiving high-energy treatment in their study.<sup>14</sup>  
21  
22  
23  
24  
25  
26  
27  
28  
29  
30  
31  
32  
33

34 Additionally, in a retrospective analysis of 209 eyes by Bloom et al., a very low  
35 incidence of hypotony (1%) was observed with a high energy protocol when the mean  
36 energy used was 90J.<sup>18</sup> Furthermore, Iliev et al. report in their study that eyes  
37 developing hypotony had not received higher energies compared with eyes that  
38 maintained normal IOP.<sup>17</sup> Therefore, the intention to reduce hypotony risk by using a  
39 lower laser power and fewer applications per treatment should be weighed against the  
40 possibility for a lower efficacy of the cyclodiode treatment.  
41  
42  
43  
44  
45  
46  
47  
48  
49

50  
51  
52 Visual acuity (VA) remained unchanged for the majority of our patients who  
53 underwent cyclodiode treatment (69.9%). In our study 16.4% reported deterioration in  
54 VA of 1 Snellen line, while 13.7% of the patients reported an improvement in VA of  
55  
56  
57  
58  
59  
60

1  
2  
3 1 Snellen line after 6 weeks. The latter probably resulted either from resolution of  
4 preoperative corneal oedema or inter-observer variation in visual acuity testing.  
5  
6 Similar results are also reported in a study by Murphy et al., where the VA remained  
7 the same in 74.6% of the patients at 6 months following cyclodiode treatment.<sup>14</sup> In  
8  
9 our study most patients with difficult to manage glaucoma retained their good VA in  
10 the long-term following cyclodiode treatment. The proportion losing two Snellen lines  
11 is actually better than that reported after trabeculectomy or tube surgery.<sup>21</sup> These  
12 results suggest a possible role for the use of transscleral cyclodiode treatment in eyes  
13 with relatively good visual potential, however, further controlled prospective studies  
14 would be required to better define this role.  
15  
16  
17  
18  
19  
20  
21  
22  
23  
24  
25  
26

27 This study is the first to measure the mean deviation (MD) values for the patients both  
28 pre-operatively and post-operatively in order to provide a more objective assessment  
29 of glaucoma related visual loss. The MD values in our patients remained virtually  
30 unchanged after cyclodiode treatment from -8.74dB preoperatively to -9.05 dB  
31 postoperatively. Previously it has been reported that the most frequent cause of visual  
32 loss was further progression of glaucoma, which was an attributable cause in over half  
33 of the cases.<sup>22</sup> The peri-operative visual field assessment presented in this study  
34 suggests that the maintenance of VA observed in the majority of the patients  
35 following cyclodiode treatment could be due to a good postoperative IOP control.  
36 There are no previous retrospective or prospective studies evaluating visual field  
37 measurements peri-operatively in patients undergoing cyclodiode treatment and this  
38 most likely reflects the difficulties associated with performing the tests in patients  
39 with poor VA. Our study therefore is the first to provide a standardised measurable  
40 evidence of maintenance of patients' visual fields as a marker of glaucoma  
41  
42  
43  
44  
45  
46  
47  
48  
49  
50  
51  
52  
53  
54  
55  
56  
57  
58  
59  
60

1  
2  
3 progression following a single cyclodiode treatment. Our study's main limitations are  
4  
5 its retrospective nature and the absence of a control group to distinguish the adverse  
6  
7 effects of the treatment from the natural history of the underlying disease.  
8  
9

10  
11 The results of this study suggest that the IOP reduction after cyclodiode treatment  
12  
13 could potentially prevent further deterioration in the glaucoma patients' vision.  
14  
15 Currently, according to the UK National Cyclodiode Survey Study only 60% of  
16  
17 practitioners would perform cyclodiode procedure in the presence of good visual  
18  
19 acuity.<sup>12</sup> Until recently, cyclodiode treatment has been associated with subsequent  
20  
21 loss of VA in significant percentage of the patients.<sup>18,23,24</sup> However, cyclodiode use in  
22  
23 eyes with useful vision has already been proposed in several studies.<sup>19,22-25</sup>  
24  
25 Furthermore, the risk of VA loss in patients after multiple cyclodiode treatments does  
26  
27 not appear to be any greater than that after any other surgical modality used for  
28  
29 treating patients with glaucoma as reported in a study by Rotchford et al.<sup>24</sup>  
30  
31  
32  
33  
34  
35

36 In our study, the better outcome in visual acuity was most pronounced in the high  
37  
38 energy group, probably due to the more effective IOP control. Of the patients that  
39  
40 received high energy treatment (90J), 18.6% noted improvement of at least 1 Snellen  
41  
42 line compared with 6.7% in the patients that received low energy treatment (45J).  
43  
44 Similar results are observed when patients were assessed in regard to the degrees  
45  
46 treated. Here, of the patients that underwent 360 degrees treatment, 20.9% noted  
47  
48 improvement of the equivalent of at least 1 Snellen line compared with 5.5% of the  
49  
50 patients underwent 180 degrees treatment.  
51  
52  
53  
54  
55  
56  
57  
58  
59  
60

1  
2  
3 In conclusion, conventional diode cyclophotocoagulation is a safe and effective  
4 treatment for refractory glaucoma characterised by low incidence of complications.  
5 IOP pressure can be effectively reduced in patients with glaucoma after a single  
6 cyclodiode treatment without adverse effects on VA over a 3 year period in majority  
7 of the patients. Hypotony is the main risk of treatment and might be limited by  
8 reducing the laser energy applied to less than 90J, particularly for patients with  
9 neovascular glaucoma.  
10  
11  
12  
13  
14  
15  
16  
17  
18  
19  
20

### 21 **Figure and Table Legends**

22  
23  
24 **Figure 1** (A) Change in Intraocular Pressure following a single Cyclodiode treatment  
25 (B) Safety and Efficacy of Cyclodiode Treatment (C) IOP reduction was maintained  
26 long-term over the period of 3 years after single treatment  
27  
28  
29  
30  
31

32  
33 **Figure 2** Kaplan-Meier analysis for cumulative proportion of success in IOP control  
34 after a single Cyclodiode treatment. Survival was defined as sustained IOP drop of at  
35 least 30% compared with pre-treatment or sustained intraocular pressure (IOP) of 6–  
36 21 mmHg without the need for additional IOP lowering medications or further  
37 surgical interventions.  
38  
39  
40  
41  
42  
43  
44  
45

46 **Figure 3** (A) Cyclodiode effect on antiglaucoma medications (B) Preoperative and  
47 postoperative visual acuity measurements in LogMAR units after a single Cyclodiode  
48 treatment (C) Preoperative and postoperative visual field loss taken from MD values  
49 (dB) on the HVF analyser after a single Cyclodiode treatment  
50  
51  
52  
53  
54  
55  
56  
57  
58  
59  
60

1  
2  
3 **Figure 4 (A)** Effect of laser energy on IOP reduction **(B)** Effect of laser energy on  
4 visual acuity (VA) **(C)** Effect of degrees treated on IOP reduction **(D)** Effect of  
5 degrees treated on visual acuity (VA)  
6  
7  
8  
9

10  
11  
12 **Table 1** Baseline demographics of the patients and clinical parameters including  
13 diagnostic features, pre-operative IOP and visual acuity assessments.  
14  
15

16  
17  
18  
19 **Table 2** Details of the patients who developed hypotony including diagnostic and  
20 treatment features, peri-operative IOP assessments and duration of hypotony  
21  
22  
23

## 24 25 26 **References**

- 27  
28  
29 1. Hennis HL, Stewart WC. Semiconductor diode laser transscleral  
30 cyclophotocoagulation in patients with glaucoma. *Am J Ophthalmol* 1992;**113**:81–5.  
31  
32 2. Hawkins TA, Stewart WC. One-year results of semiconductor transscleral  
33 cyclophotocoagulation in patients with glaucoma. *Arch Ophthalmol* 1993;**111**:488–  
34 91.  
35  
36 3. Brancato R, Carassa RG, Bettin P. Contact transscleral cyclophotocoagulation with  
37 diode laser in refractory glaucoma. *Eur J Ophthalmol* 1995;**5**:32–9.  
38  
39 4. Threlkeld AB, Johnson MH. Contact transscleral diode cyclophotocoagulation for  
40 refractory glaucoma. *J Glaucoma* 1999;**8**:3–7.  
41  
42 5. Egbert PR, Fiadoyor S, Budenz DL. Diode laser transscleral cyclophotocoagulation  
43 as a primary surgical treatment for primary open angle glaucoma. *Arch Ophthalmol*  
44 2001;**119**:345–50.  
45  
46 6. Mistlberger A, Liebmann JM, Tschiderer H. Diode laser transscleral  
47 cyclophotocoagulation for refractory glaucoma. *J Glaucoma* 2001;**10**:288–93.  
48  
49 7. Benson MT, Nelson ME. Cyclocryotherapy: a review of cases over a 10-year  
50 period. *Br J Ophthalmol* 1990;**74**:103–5.  
51  
52 8. Schuman JS, Bellows AR, Shingleton BJ. Contact transscleral Nd:YAG laser  
53 cyclophotocoagulation. *Ophthalmology* 1992;**99**:1089–94.  
54  
55  
56  
57  
58  
59  
60



- 1  
2  
3 9. Ulbig MW, McHugh DA, McNaught AI. Clinical comparison of semiconductor  
4 diode versus neodymium:YAG non-contact cyclophotocoagulation. *Br J Ophthalmol*  
5 1995;**79**:569–74.  
6
- 7  
8 10. Pucci V, Tappainer F, Borin S. et al Longterm follow up after transscleral diode  
9 laser photocoagulation in refractory glaucoma. *Ophthalmologica* 2003; **217**:279–283.
- 10  
11 11. Grueb M, Rohrbach J M, Bartz-Schmidt K U. et al Transscleral diode laser  
12 cyclophotocoagulation as primary and secondary surgical treatment in primary open  
13 angle and pseudoexfoliative glaucoma: Long term clinical outcomes. *Graefes Arch*  
14 *Clin Exp Ophthalmol* 2006; **244**:1293–1299.
- 15 12. P Agrawal, S Dulku, W Nolan and V Sung. The UK National Cyclodiode Laser  
16 Survey. *Eye* 2011; **25**:168–173  
17
- 18  
19 13. Walland MJ. Diode laser cyclophotocoagulation: longer term follow up of a  
20 standardized treatment protocol. *Clin Exp Ophthalmol* 2000; **28**:263–7.
- 21  
22 14. Murphy CC, Burnett CAM, Spry PDG, Broadway DC, Diamond JP. A two centre  
23 study of the dose-response relation for transscleral diode laser cyclophotocoagulation  
24 in refractory glaucoma. *Br J Ophthalmol* 2003; **87**:1252–1257  
25
- 26  
27 15. Chang SH, Chen YC, Li CY. Contact diode laser transscleral  
28 cyclophotocoagulation for refractory glaucoma: comparison of two treatment  
29 protocols. *Can J Ophthalmol* 2004; **39**:511–6.
- 30  
31 16. Nouredin BN, Zein W, Haddad C. Diode laser transcleral cyclophotocoagulation  
32 for refractory glaucoma: a 1 year follow-up of patients treated using an aggressive  
33 protocol. *Eye* 2006; **20**:329–35.  
34
- 35  
36 17. Iliev ME, Gerber S. Long-term outcome of trans-scleral diode laser  
37 cyclophotocoagulation in refractory glaucoma. *Br J Ophthalmol* 2007; **91**:1631–1635.
- 38  
39 18. Bloom PA, Tsai JC, Sharma K, Miller MH, Rice NS, Hitchings RA. Cyclodiode  
40 trans-scleral diode laser cyclophotocoagulation in the treatment of advanced  
41 refractory glaucoma. *Ophthalmology* 1997; **104**:1508–1520.  
42
- 43  
44 19. Vernon SA, Koppens JM, Menon GJ, Negi AK. Diode laser cycloablation in adult  
45 glaucoma: long-term results of a standard protocol and review of current literature.  
46 *Clin Exp Ophthalmol* 2006; **34**:411-20.
- 47  
48 20. Kosoko O, Gaasterland DE, Pollack IP. Long-term outcome of initial ciliary  
49 ablation with contact diode laser transscleral cyclophotocoagulation for severe  
50 glaucoma. The diode laser ciliary ablation study group. *Ophthalmology* 1996;  
51 **103**:1294–302.  
52
- 53  
54 21. Gedde SJ, Schiffman JC, Feuer WJ, Herndon LW, Brandt JD, Budenz DL.  
55 Treatment outcomes in the tube versus trabeculectomy study after one year of follow-  
56 up. *Am J Ophthalmol* 2007; **143**(1):9-22.  
57  
58  
59  
60

- 1  
2  
3 22. Rotchford AP, Jayasawal R, Madhusudhan S, Ho S, King AJ, Vernon SA.  
4 Transscleral diode laser cycloablation in patients with good vision *Br J Ophthalmol*  
5 2010; **94**:1180-1183  
6  
7  
8 23. Youn J, Cox TA, Allingham RR. Factors associated with visual acuity loss after  
9 noncontact transscleral Nd:YAG cyclophotocoagulation. *J Glaucoma* 1996; **5**:390-94.  
10  
11 24. Wilensky JT, Kammer J. Long-term visual outcome of transscleral laser  
12 cyclotherapy in eyes with ambulatory vision. *Ophthalmology* 2004; **111**:1389-92.  
13  
14 25. Ansari E, Gandhewar J. Long-term efficacy and visual acuity following  
15 transscleral diode laser photocoagulation in cases of refractory and non-refractory  
16 glaucoma. *Eye* 2007; **21**:936-40.  
17  
18  
19  
20  
21  
22  
23  
24  
25  
26  
27  
28  
29  
30  
31  
32  
33  
34  
35  
36  
37  
38  
39  
40  
41  
42  
43  
44  
45  
46  
47  
48  
49  
50  
51  
52  
53  
54  
55  
56  
57  
58  
59  
60

1  
2  
3  
4  
5  
6  
7  
8  
9  
10  
11  
12  
13  
14  
15  
16  
17  
18  
19  
20  
21  
22  
23  
24  
25  
26  
27  
28  
29  
30  
31  
32  
33  
34  
35  
36  
37  
38  
39  
40  
41  
42  
43  
44  
45  
46  
47  
48  
49  
50  
51  
52  
53  
54  
55  
56  
57  
58  
59  
60

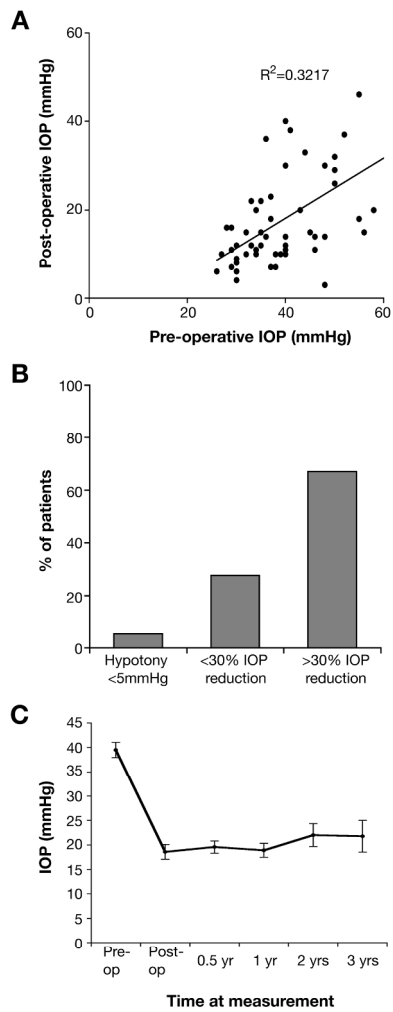
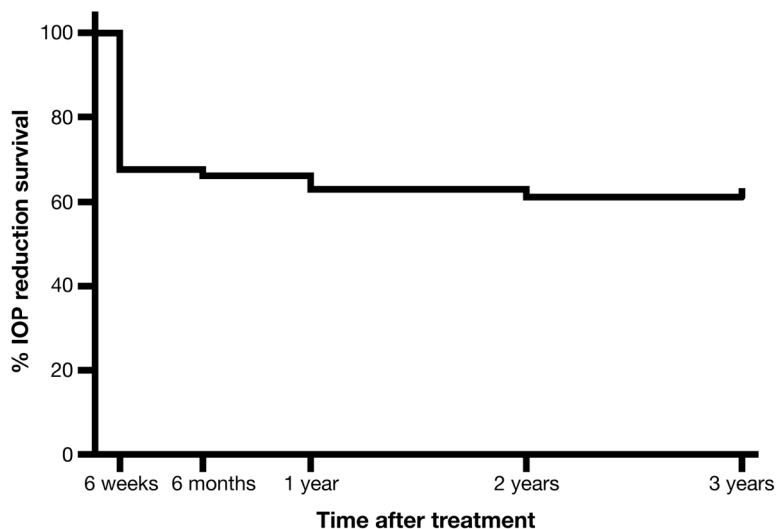


Figure 1

135x262mm (300 x 300 DPI)

1  
2  
3  
4  
5  
6  
7  
8  
9  
10  
11  
12  
13  
14  
15  
16  
17  
18  
19  
20  
21  
22  
23  
24  
25  
26  
27  
28  
29  
30  
31  
32  
33  
34  
35  
36  
37  
38  
39  
40  
41  
42  
43  
44  
45  
46  
47  
48  
49  
50  
51  
52  
53  
54  
55  
56  
57  
58  
59  
60



**Figure 2**

157x184mm (300 x 300 DPI)

1  
2  
3  
4  
5  
6  
7  
8  
9  
10  
11  
12  
13  
14  
15  
16  
17  
18  
19  
20  
21  
22  
23  
24  
25  
26  
27  
28  
29  
30  
31  
32  
33  
34  
35  
36  
37  
38  
39  
40  
41  
42  
43  
44  
45  
46  
47  
48  
49  
50  
51  
52  
53  
54  
55  
56  
57  
58  
59  
60

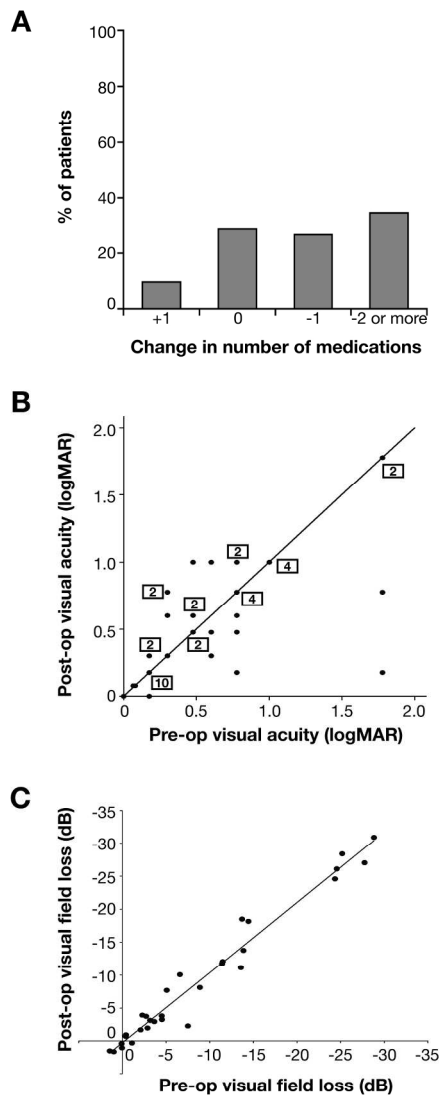


Figure 3

171x234mm (300 x 300 DPI)

1  
2  
3  
4  
5  
6  
7  
8  
9  
10  
11  
12  
13  
14  
15  
16  
17  
18  
19  
20  
21  
22  
23  
24  
25  
26  
27  
28  
29  
30  
31  
32  
33  
34  
35  
36  
37  
38  
39  
40  
41  
42  
43  
44  
45  
46  
47  
48  
49  
50  
51  
52  
53  
54  
55  
56  
57  
58  
59  
60

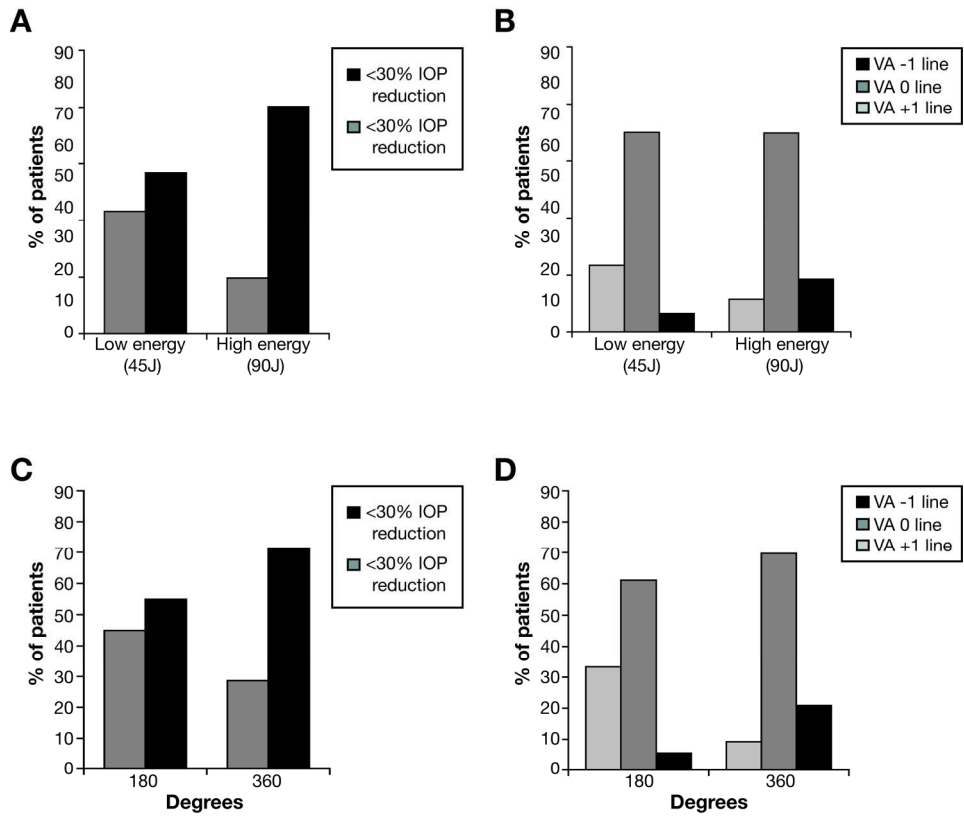


Figure 4

175x216mm (300 x 300 DPI)



**A Retrospective Analysis of Long Term Outcomes Following  
a Single Episode of Transscleral Cyclodiode Laser Treatment  
in Glaucoma Patients**

Journal:	<i>BMJ Open</i>
Manuscript ID:	bmjopen-2013-002793.R1
Article Type:	Research
Date Submitted by the Author:	27-May-2013
Complete List of Authors:	Zhekov, Ivailo; Cambridge University Teaching Hospitals NHS Foundation Trust, School of Clinical Medicine Janjua, Razia; Cambridge University Teaching Hospitals NHS Foundation Trust, Shahid, Humma; Cambridge University Teaching Hospitals NHS Foundation Trust, Sarkies, Nicholas; Cambridge University Teaching Hospitals NHS Foundation Trust, Martin, Keith; Cambridge University Teaching Hospitals NHS Foundation Trust, White, Andrew; Cambridge University Teaching Hospitals NHS Foundation Trust, Cambridge, ; Centre for Vision Research, Westmead Millennium Institute,
<b>Primary Subject Heading</b>:	Ophthalmology
Secondary Subject Heading:	Ophthalmology
Keywords:	OPHTHALMOLOGY, Glaucoma < OPHTHALMOLOGY, Neuro-ophthalmology < OPHTHALMOLOGY

SCHOLARONE™  
Manuscripts

# A Retrospective Analysis of Long Term Outcomes Following a Single Episode of Transscleral Cyclodiode Laser Treatment in Glaucoma Patients

Ivailo Zhekov MA<sup>1</sup>, Razia Janjua MA MRCOph<sup>1</sup>, Humma Shahid DM MA MRCOph<sup>1</sup>, Nicholas Sarkies MA MRCP MRCOph<sup>1</sup>, Keith R Martin DM MA MRCP FRCOphth<sup>1,2</sup> and Andrew JR White FRANZCO PhD<sup>1,2+</sup>

1: Cambridge University Teaching Hospitals NHS Foundation Trust, Cambridge, UK

2: NIHR Biomedical Research Centre, University of Cambridge, UK

+: Current Address: Centre for Vision Research, Westmead Millennium Institute, Sydney Australia

**Objectives:** To investigate the efficacy of a single cyclodiode laser photocoagulation treatment for refractory glaucoma and its effect on visual outcome in patients with good visual potential as well as to evaluate possible predictive factors in establishing optimal treatment parameters.

**Design:** Retrospective observational study

**Setting:** Tertiary referral centre

**Participants:** The notes of 87 patients with refractory glaucoma who underwent cyclodiode photocoagulation as a first surgical intervention over a 7-year period.

**Main outcome measures:** Maintenance of intraocular pressure reduction, number of medications and visual acuity outcomes post-treatment.

**Results:** The mean intraocular pressure (IOP) after a single treatment decreased from 39.5 +/-1.3 mmHg to 17.8 +/-1.5 mmHg after a 6-week follow-up period (P<0.0001). This reduction in IOP was maintained over a 3-year period. Here 61.5% of the patients were able to reduce the number of medications used, with mean reduction from 2.6 to 1.5 medications (P<0.05). Mean initial visual field loss prior to treatment was 8.74dB and at 6 months post-treatment was measured at 9.06dB (P>0.05) suggesting no significant overall change. The visual acuity remained unchanged or improved for 83.6% of the patients (P>0.05) with relatively good visual potential (average vision preoperatively was 0.57 logMAR). Hypotony occurred in 5.3% of the patients. No patients required enucleation or evisceration.

**Conclusion:** A single session of cyclodiode laser therapy was associated with significant IOP reduction in the majority of the patients with refractory glaucoma. The



1  
2  
3 majority were able to maintain the IOP reduction over a 3-year period without the  
4 need for a further surgical intervention. Additionally, over 80% of the patients in our  
5 study were able to maintain their baseline visual acuity. These results support the  
6 view that a single cyclodiode treatment can be sufficient in achieving long term IOP  
7 control and may be considered in eyes with relatively good visual potential.  
8  
9  
10

### 11 12 13 **Introduction:**

14 Transscleral diode laser cyclophotocoagulation (cyclodiode) has been established as a  
15 relatively safe and effective intervention for glaucoma.<sup>1-6</sup> Cyclodiode is often used in  
16 refractory glaucoma, where alternative surgical approaches, such as antiproliferative  
17 augmented trabeculectomy and tube shunt surgery, may sometimes be judged less  
18 appropriate, for example in eyes with poor visual potential. Additionally, cyclodiode  
19 has been shown to be safer than other cyclodestructive procedures, such as Nd:YAG  
20 laser cyclophotocoagulation and cyclocryotherapy, which present a greater risk of  
21 hypotony and phthisis resulting from excessive ciliary body ablation.<sup>7-9</sup> However, the  
22 outcome of cyclodiode therapy is unpredictable and multiple treatments may be  
23 required to achieve long term intraocular control.<sup>10-11</sup>  
24  
25  
26  
27  
28  
29  
30  
31  
32  
33  
34  
35  
36  
37  
38  
39

40 Currently there is no general consensus for an optimum treatment protocol for  
41 cyclodiode. Data for outcomes following cyclodiode laser vary considerably in the  
42 literature.<sup>12</sup> Parameters such as total delivered energy per eye, number of laser  
43 applications per treatment, pulse power, pulse duration and proportion of  
44 circumference treated have been analysed with varying results.<sup>13-17</sup> Furthermore,  
45 cyclodiode therapy has often been reserved for eyes with poor vision due to reports  
46 that it can lead to decrease in visual acuity.<sup>18</sup>  
47  
48  
49  
50  
51  
52  
53  
54  
55  
56  
57  
58  
59  
60

1  
2  
3 The purpose of this study was to evaluate the long-term safety and efficacy of a single  
4 episode of transscleral diode laser cyclophotocoagulation for raised intraocular  
5 pressure in patients with good visual potential at a UK tertiary glaucoma referral  
6 centre. The retrospective nature of the study design reflected the need to analyse  
7 multiple clinical variables and evaluate different types of outcomes as well as their  
8 progression over several years. Additionally, such a study could facilitate the  
9 identification predictive factors for optimal treatment parameters by investigating the  
10 relation of laser energy delivered and degrees treated to the long-term maintenance in  
11 IOP reduction.  
12  
13  
14  
15  
16  
17  
18  
19  
20  
21  
22  
23  
24

### 25 **Methods:**

26  
27 The departmental electronic medical record system (Medisoft Ophthalmology,  
28 Medisoft Ltd Leeds UK) and operating theatre log books were examined for the  
29 period 09/2004 to 06/2011 to identify patients who had undergone cyclodiode  
30 treatment as a first surgical intervention.  
31  
32  
33  
34  
35  
36  
37  
38

39 All patients were assessed for their response to treatment and those who did not  
40 achieve the target IOP reduction were taken as treatment failures. The patients who  
41 required either repeat cyclodiode or alternative treatments for IOP control during the  
42 follow up period were also considered as treatment failures from the time of the  
43 additional surgical intervention. They were not further assessed for maintenance of  
44 post-operative IOP as any additional surgical interventions would interfere with the  
45 interpretation of the IOP maintenance data.  
46  
47  
48  
49  
50  
51  
52  
53  
54  
55  
56  
57  
58  
59  
60

1  
2  
3 Cyclophotocoagulation was performed in the Operating Theatre under subtenon,  
4 peribulbar or general anaesthesia using a standard treatment protocol. A lid speculum  
5 was placed to achieve adequate exposure for probe placement all around the limbus  
6 and a squint hook was used to rotate the globe to achieve exposure in those with  
7 narrow palpebral apertures. All treatments were performed using Oculight Sx  
8 semiconductor diode 810nm laser and the contact G Probe™ (IRIS Medical  
9 Instruments, Inc.). Standard settings were 1500ms duration and 1500mW power. The  
10 energy levels were not routinely titrated for ‘pops’ and the power settings were left at  
11 1500mW. Transillumination was performed for ciliary body identification. Usually 10  
12 applications were applied per quadrant for 180 to 360°, with the applications spaced  
13 approximately one-half width of the probe tip apart. The 3 and 9 o’clock positions  
14 were avoided to spare the long ciliary nerves. Postoperative steroid drops were used  
15 for 4 weeks. Glaucoma medications were continued after cyclodiode treatment and  
16 adjusted later as required.  
17  
18  
19  
20  
21  
22  
23  
24  
25  
26  
27  
28  
29  
30  
31  
32  
33  
34  
35

36 Success was defined as an intraocular pressure (IOP) of 6–21 mmHg at the last  
37 follow-up visit without the need for oral acetazolamide and an IOP reduction of at  
38 least 30% compared with pre-treatment. Hypotony was defined as an IOP of 5 mmHg  
39 or less. The laser energy used was classified as either low energy (median value 45  
40 +/- 11.47 J, range 22.5-67.5J) or high energy (median value 90 +/- 13.42 J, range  
41 67.5-130J). The follow up period in IOP measurements was 3 years. Visual acuity  
42 (VA) prior to treatment was assessed for all patients using LogMAR scale. Visual  
43 field testing was performed with the Humphrey Visual Field Analyser™ using the  
44 SITA 24-2 threshold programme. Mean deviation of visual field sensitivity loss in  
45 decibels (MD) was taken as our surrogate measure of visual field loss.  
46  
47  
48  
49  
50  
51  
52  
53  
54  
55  
56  
57  
58  
59  
60

Data was analysed using Microsoft Excel™ and where appropriate a Student's t-test was used to calculate p-values. R<sup>2</sup> values were derived from linear regression analyses using the same programme. Kaplan-Meier 'survival' analysis was done using GraphPad Prism 5.0™. Approval for the audit was granted by the Cambridge University Hospitals NHS Foundation Trust Ethics Committee. The tenets of the Declaration of Helsinki were observed.

## Results:

From our records, we were able to identify 104 patients who underwent cyclodiode therapy as a first surgical treatment modality in the period from 09/2004 to 06/2011 at Addenbrooke's Hospital, Cambridge. Of these, complete medical records were available for 87 patients with follow up data available for up to 3 years. Preoperative patient data is summarised in **Table 1**.

**Table 1.** Baseline demographics and clinical parameters

	Category	Cases (n=87)
Mean age, yrs		66.3
Sex (n (%))	Male	49 (56.3%)
	Female	38 (43.7%)
Preoperative VA, mean		0.57 LogMAR
IOP (mmHg), mean (SD)		39.5 +/- 1.3 mmHg
Mean number of glaucoma medications		2.6
Glaucoma type (n (%))	Primary open angle glaucoma (POAG)	33 (37.9%)
	Primary angle closure glaucoma (PACG)	6 (6.9%)
	Neovascular glaucoma	25 (28.7%)
	Uveitic glaucoma	5 (5.7%)
	Secondary open angle glaucoma (SOAG)- Other	18 (20.8%)

### Change in Intraocular Pressure (Fig.1A)

Mean intraocular pressure (IOP) decreased significantly from 39.5 mmHg (SE 1.26) before cyclodiode therapy to 17.8 mmHg (SE 1.51) at 6 weeks post-treatment, an observable reduction of 45.1 % ( $P < 0.0001$ ). There was a mild linear correlation between preoperative IOP and observed IOP reduction ( $R^2 = 0.32$ ).

### Safety and Efficacy of Cyclodiode Treatment (Fig.1B)

An IOP reduction greater than 30% of initial IOP was achieved at 6 weeks in 67.7 % of the patients, while hypotony occurred in only 5 cases or 5.3% of patients ( $p < 0.05$ ). None of the patients experienced post-treatment uveitis or required further treatment or enucleation for pain symptoms. The data for the patients who developed hypotony such as initial diagnosis, treatment settings, IOP measurements and VA outcome is summarised in **Table 2**.

**Table 2.** Details of hypotony patients

	Diagnosis	Energy used	Degrees treated	Peak IOP (mmHg)	Postop IOP (mmHg)	Hypotony duration	Last IOP (mmHg)	Preop VA (LogMAR)	Last VA (LogMAR)
PT1	Neovascular	90J	180	58	2	6 months	10	0.78	PL
PT2	Neovascular	90J	360	41	4	6 months	32	PL	NPL
PT3	Neovascular	120J	360	40	2	6 months	9	0.6	HM
PT4	SOAG(other)	120J	360	26	3	6 months	8	1.0	CF
PT5	SOAG(other)	120J	360	48	2	-	3	HM	HM

### Long term maintenance of IOP reduction after a single cyclodiode treatment

(Fig.1C)

The IOP reduction was maintained long term over the period of 3 years in the majority of our patients. Measurements were taken pre-operatively (39.5+/-1.3 mmHg) as well as post-operatively at 6 weeks (17.8+/-1.5 mmHg) and 6 months

1  
2  
3 (19.6±1.5 mmHg) for all patients. Patients who required additional procedures in  
4 that eye post-treatment were excluded from further analysis from the time point of  
5 additional intervention as it would artificially lower their IOP measurements The  
6 follow-up measurements at 1 year (18.9 mmHg), 2 year (22.1 mmHg) and 3 years  
7 (21.7 mmHg) were all after a single cyclodiode treatment.  
8  
9  
10  
11  
12

13  
14  
15  
16 **Kaplan-Meier analysis of IOP reduction ‘survival’ following a single cyclodiode**  
17 **treatment (Fig.2)**  
18  
19

20  
21 Success was defined as an intraocular pressure (IOP) of 6–21 mmHg at the last follow  
22 up visit without the need for oral acetazolamide and an IOP reduction of at least 30%  
23 compared with preoperatively. The proportion of patients to maintain the desired IOP  
24 reduction after a single cyclodiode treatment without the need for further IOP  
25 lowering intervention in our study was 67.7% at 6 weeks post-operatively, 66.2% at 6  
26 months, 63% at 1 year, 61.2% at 2 years and 61.2% at 3 years. Of the patients who  
27 responded to treatment at 6 weeks, 90.4% were able to maintain the IOP reduction  
28 over a period of 3 years.  
29  
30  
31  
32  
33  
34  
35  
36  
37  
38  
39

40  
41 **Cyclodiode effect on glaucoma medications (Fig.3A)**  
42

43 A significant proportion of the patients (61.5%) were able to decrease the number of  
44 medications they are taking for IOP control following cyclodiode. A decrease of 2  
45 medications or more was achieved by 34.6% of patients, while 26.9% of patients  
46 decreased their medication by one. Overall, the average number of medications  
47 decreased from 2.6 before cyclodiode treatment to 1.5 medications after cyclodiode  
48 treatment (P<0.05).  
49  
50  
51  
52  
53  
54  
55  
56  
57  
58  
59  
60

**Change in visual acuity (Fig.3B)**

A single episode of cyclodiode treatment had no significant effect on visual acuity (VA). Mean VA measurements changed from 0.5720 Log MAR units before cyclodiode therapy to 0.5408 Log MAR units post treatment, which was not statistically significant ( $P>0.05$ ). The data analysis was performed on 47 patients (54.1%), who had clearly annotated numerical values for their VA measurements both preoperatively and postoperatively. The boxed numerals in the graph represent the number of values at the same point.

**Change in visual fields (Fig.3C)**

The average visual field sensitivity remained almost unchanged with an average MD value of -8.74 dB pre-treatment compared to MD value of -9.05 dB at 6 months post-treatment, which was not statistically significant ( $P>0.05$ ). The data analysis was performed on 36 patients (41.3%), who had clearly annotated numerical values for their visual fields measurements both pre-operatively and post-operatively.

**Effect of laser energy on IOP reduction (Fig.4A)**

Of the patients that received high energy treatment (90J), 80.3% obtained pressure reduction of  $>30\%$  of initial IOP compared with 56.8% in the patients that received low energy treatment (45J).

**Effect of laser energy on visual acuity (Fig.4B)**

Of the patients that received high energy treatment (90J), 18.6% noted improvement of the equivalent of at least 1 Snellen line compared with 6.7% in the patients that received low energy treatment.

**Effect of degrees treated on IOP reduction (Fig.4C)**

Of the patients that underwent 360 degrees treatment, 71.4% obtained pressure reduction greater than 30% of initial IOP compared with 55% of the patients that underwent 180 degree treatment.

**Effect of degrees treated on visual acuity (Fig.4D)**

Of the patients that underwent 360 degrees treatment, 20.9% noted improvement of the equivalent of at least 1 Snellen line compared with 5.5% of the patients underwent 180 degree treatment.

**Discussion:**

The results of this retrospective analysis are supportive of a single cyclodiode treatment being effective in management of refractory glaucoma. Although this is a retrospective rather than a prospective study, we aimed to avoid selection bias by including all patients either as success or failure of treatment. The patients who required additional surgical interventions were taken as failure from the time of additional intervention.

Our data show that 67.7% of the patients achieved an IOP reduction greater than 30% of presenting IOP at 6 weeks and 61.5% could reduce the number of medications by at least 1. Hypotony appears to be related to the type of glaucoma (with neovascular glaucoma associated with worse outcome) as well as to the number of degrees treated and total energy used. Indeed, the patients with neovascular glaucoma in our cohort



1  
2  
3 were almost 4 times more likely to develop hypotony compared to any other types of  
4  
5 glaucoma.  
6  
7

8  
9  
10 In our patients, the mean intraocular pressure (IOP) decreased significantly from 39.5  
11 mmHg (SE 1.26) before cyclodiode therapy to 17.8 mmHg (SE 1.51) at 6 weeks post-  
12 treatment, an observable reduction of 45.1 % (P<0.05). The results of the linear  
13 regression analysis indicate that there might be some predictive value in determining  
14 IOP reduction based on initial IOP measurements such as the greatest reduction in  
15 IOP is likely to be seen in patients with the highest IOP at the time of treatment ( $R^2 =$   
16 0.32). A similar relationship was reported by Vernon et al., where eyes with IOP  
17 greater than 30 mmHg were more likely to exhibit a pressure drop greater than 30%  
18 of initial IOP.<sup>19</sup>  
19  
20  
21  
22  
23  
24  
25  
26  
27  
28  
29  
30  
31

32 The IOP reduction was maintained long term in 61.2% of all patients in our study  
33 after a single cyclodiode treatment. Of the patients who responded to treatment at 6  
34 weeks, 90.4% were able to maintain the IOP reduction over a period of 3 years.  
35 Similar sustainability of the mean IOP reduction postoperatively is also reported by  
36 Bloom et al. and Kosoko et al., although in both these studies the follow up was  
37 considerably shorter, the average time being less than 2 years.<sup>18,20</sup> The results from  
38 our patient cohort suggest that a single session of cyclodiode therapy could potentially  
39 be a viable initial treatment modality for maintaining a longer term IOP control in  
40 patients with refractory glaucoma.  
41  
42  
43  
44  
45  
46  
47  
48  
49  
50  
51

52  
53  
54 In our study, of the patients that received high energy treatment (90J), 80.3% obtained  
55 an IOP reduction of greater than 30% of the initial IOP compared with 56.8% in the  
56  
57  
58  
59  
60

1  
2  
3 patients receiving low energy treatment (45J). This is consistent with a meta-analysis  
4  
5 by Iliev et al., where comparing different laser protocols from different studies  
6  
7 suggested that the use of a low energy protocol potentially could result in the lowest  
8  
9 IOP reduction, the highest postoperative IOP and the highest retreatment rate  
10  
11 overall.<sup>17</sup> We also observed similar relationship when patients were assessed in regard  
12  
13 to the degrees treated rather than energy used. Here, of the patients that underwent  
14  
15 360 degrees treatment, 71.4% obtained pressure reduction greater than 30% of initial  
16  
17 IOP compared with 55% of the patients that underwent 180 degrees treatment.  
18  
19

20  
21  
22 Hypotony was the most common long-term complication in our study (5.3%), which  
23  
24 is in accordance with other published reports.<sup>14</sup> In our cohort, the incidence of  
25  
26 hypotony was much more likely with an eye with neovascular glaucoma (**Table 2**).  
27  
28 Murphy et al. also found a higher risk of hypotony in eyes with neovascular  
29  
30 glaucoma, particularly if preoperative IOP was high and energy level used was  
31  
32 greater.<sup>14</sup> This correlation between hypotony and higher energy used in cyclodiode is  
33  
34 also observed in several other studies.<sup>12</sup> However, univariate regression analysis done  
35  
36 by Murphy et al. shows that very high pre-treatment IOP alone, possibly causing  
37  
38 ciliary body ischaemia, could be responsible for the high incidence of hypotony in the  
39  
40 patients receiving high-energy treatment in their study.<sup>14</sup>  
41  
42  
43  
44  
45  
46

47  
48 Additionally, in a retrospective analysis of 209 eyes by Bloom et al., a very low  
49  
50 incidence of hypotony (1%) was observed with a high energy protocol when the mean  
51  
52 energy used was 90J.<sup>18</sup> Furthermore, Iliev et al. report in their study that eyes  
53  
54 developing hypotony had not received higher energies compared with eyes that  
55  
56 maintained normal IOP.<sup>17</sup> Therefore, the intention to reduce hypotony risk by using a  
57  
58  
59  
60

1  
2  
3 lower laser power and fewer applications per treatment should be weighed against the  
4  
5 possibility for a lower efficacy of the cyclodiode treatment.  
6  
7

8  
9  
10 Visual acuity (VA) remained unchanged for the majority of our patients who  
11  
12 underwent cyclodiode treatment (69.9%). In our study 16.4% reported deterioration in  
13  
14 VA of 1 Snellen line, while 13.7% of the patients reported an improvement in VA of  
15  
16 1 Snellen line after 6 weeks. The latter probably resulted either from resolution of  
17  
18 preoperative corneal oedema or inter-observer variation in visual acuity testing.  
19  
20 Similar results are also reported in a study by Murphy et al., where the VA remained  
21  
22 the same in 74.6% of the patients at 6 months following cyclodiode treatment.<sup>14</sup> In  
23  
24 our study most patients with difficult to manage glaucoma retained their good VA in  
25  
26 the long-term following cyclodiode treatment. The proportion losing two Snellen lines  
27  
28 is actually better than that reported after trabeculectomy or tube surgery.<sup>21</sup> These  
29  
30 results suggest a possible role for the use of transscleral cyclodiode treatment in eyes  
31  
32 with relatively good visual potential, however, further controlled prospective studies  
33  
34 would be required to better define this role.  
35  
36  
37  
38  
39

40  
41 This study is the first to measure the mean deviation (MD) values for the patients both  
42  
43 pre-operatively and post-operatively in order to provide a more objective assessment  
44  
45 of glaucoma related visual loss. The MD values in our patients remained virtually  
46  
47 unchanged after cyclodiode treatment from -8.74dB preoperatively to -9.05 dB  
48  
49 postoperatively. Previously it has been reported that the most frequent cause of visual  
50  
51 loss was further progression of glaucoma, which was an attributable cause in over half  
52  
53 of the cases.<sup>22</sup> The peri-operative visual field assessment presented in this study  
54  
55 suggests that the maintenance of VA observed in the majority of the patients  
56  
57  
58  
59  
60

1  
2  
3 following cyclodiode treatment could be due to a good postoperative IOP control.  
4  
5 There are no previous retrospective or prospective studies evaluating visual field  
6  
7 measurements peri-operatively in patients undergoing cyclodiode treatment and this  
8  
9 most likely reflects the difficulties associated with performing the tests in patients  
10  
11 with poor VA. Our study therefore is the first to provide a standardised measurable  
12  
13 evidence of maintenance of patients' visual fields as a marker of glaucoma  
14  
15 progression following a single cyclodiode treatment. Our study's main limitations are  
16  
17 its retrospective nature and the absence of a control group to distinguish the adverse  
18  
19 effects of the treatment from the natural history of the underlying disease.  
20  
21  
22  
23  
24

25 The results of this study suggest that the IOP reduction after cyclodiode treatment  
26  
27 could potentially prevent further deterioration in the glaucoma patients' vision.  
28  
29 Currently, according to the UK National Cyclodiode Survey Study only 60% of  
30  
31 practitioners would perform cyclodiode procedure in the presence of good visual  
32  
33 acuity.<sup>12</sup> Until recently, cyclodiode treatment has been associated with subsequent  
34  
35 loss of VA in significant percentage of the patients.<sup>18,23,24</sup> However, cyclodiode use in  
36  
37 eyes with useful vision has already been proposed in several studies.<sup>19,22-25</sup>  
38  
39 Furthermore, the risk of VA loss in patients after multiple cyclodiode treatments does  
40  
41 not appear to be any greater than that after any other surgical modality used for  
42  
43 treating patients with glaucoma as reported in a study by Rotchford et al.<sup>24</sup>  
44  
45  
46  
47  
48

49 In our study, the better outcome in visual acuity was most pronounced in the high  
50  
51 energy group, probably due to the more effective IOP control. Of the patients that  
52  
53 received high energy treatment (90J), 18.6% noted improvement of at least 1 Snellen  
54  
55 line compared with 6.7% in the patients that received low energy treatment (45J).  
56  
57  
58  
59  
60

1  
2  
3 Similar results are observed when patients were assessed in regard to the degrees  
4 treated. Here, of the patients that underwent 360 degrees treatment, 20.9% noted  
5 improvement of the equivalent of at least 1 Snellen line compared with 5.5% of the  
6 patients underwent 180 degrees treatment.  
7  
8  
9  
10

11  
12  
13  
14 In conclusion, conventional diode cyclophotocoagulation is characterised by low  
15 incidence of complications and therefore appears to be a safe and effective treatment  
16 for refractory glaucoma. In our study the IOP pressure was effectively reduced in  
17 glaucoma patients after a single cyclodiode treatment without adverse effects on VA  
18 in the majority of the patients over a 3 year period. Hypotony seems to be the main  
19 risk of treatment and could be limited by reducing the laser energy applied to less than  
20 90J, particularly in the patients with neovascular glaucoma.  
21  
22  
23  
24  
25  
26  
27  
28  
29  
30  
31

### 32 **Figure and Table Legends**

33  
34  
35 **Figure 1** (A) Change in Intraocular Pressure following a single Cyclodiode treatment  
36 (B) Safety and Efficacy of Cyclodiode Treatment (C) IOP reduction was maintained  
37 long-term over the period of 3 years after single treatment  
38  
39  
40  
41  
42  
43

44 **Figure 2** Kaplan-Meier analysis for cumulative proportion of success in IOP control  
45 after a single Cyclodiode treatment. Survival was defined as sustained IOP drop of at  
46 least 30% compared with pre-treatment or sustained intraocular pressure (IOP) of 6–  
47 21 mmHg without the need for additional IOP lowering medications or further  
48 surgical interventions.  
49  
50  
51  
52  
53  
54  
55  
56  
57  
58  
59  
60

1  
2  
3 **Figure 3 (A)** Cyclodiode effect on antiglaucoma medications **(B)** Preoperative and  
4  
5 postoperative visual acuity measurements in LogMAR units after a single Cyclodiode  
6  
7 treatment **(C)** Preoperative and postoperative visual field loss taken from MD values  
8  
9 (dB) on the HVF analyser after a single Cyclodiode treatment  
10  
11

12  
13  
14 **Figure 4 (A)** Effect of laser energy on IOP reduction **(B)** Effect of laser energy on  
15  
16 visual acuity (VA) **(C)** Effect of degrees treated on IOP reduction **(D)** Effect of  
17  
18 degrees treated on visual acuity (VA)  
19  
20

21  
22  
23 **Table 1** Baseline demographics of the patients and clinical parameters including  
24  
25 diagnostic features, pre-operative IOP and visual acuity assessments.  
26  
27

28  
29  
30 **Table 2** Details of the patients who developed hypotony including diagnostic and  
31  
32 treatment features, peri-operative IOP assessments and duration of hypotony  
33  
34  
35

### 36 37 38 39 40 41 42 43 44 45 46 47 48 49 50 51 52 53 54 55 56 57 58 59 60

## References

1. Hennis HL, Stewart WC. Semiconductor diode laser transscleral cyclophotocoagulation in patients with glaucoma. *Am J Ophthalmol* 1992;**113**:81–5.
2. Hawkins TA, Stewart WC. One-year results of semiconductor transscleral cyclophotocoagulation in patients with glaucoma. *Arch Ophthalmol* 1993;**111**:488–91.
3. Brancato R, Carassa RG, Bettin P. Contact transscleral cyclophotocoagulation with diode laser in refractory glaucoma. *Eur J Ophthalmol* 1995;**5**:32–9.
4. Threlkeld AB, Johnson MH. Contact transscleral diode cyclophotocoagulation for refractory glaucoma. *J Glaucoma* 1999;**8**:3–7.
5. Egbert PR, Fiadoyor S, Budenz DL. Diode laser transscleral cyclophotocoagulation as a primary surgical treatment for primary open angle glaucoma. *Arch Ophthalmol* 2001;**119**:345–50.

- 1  
2  
3 6.Mistlberger A, Liebmann JM, Tschiderer H. Diode laser transscleral  
4 cyclophotocoagulation for refractory glaucoma. *J Glaucoma* 2001;**10**:288–93.  
5
- 6 7. Benson MT, Nelson ME. Cyclocryotherapy: a review of cases over a 10-year  
7 period. *Br J Ophthalmol* 1990;**74**:103–5.  
8
- 9 8.Schuman JS, Bellows AR, Shingleton BJ. Contact transscleral Nd:YAG laser  
10 cyclophotocoagulation. *Ophthalmology* 1992;**99**:1089–94.  
11
- 12 9. Ulbig MW, McHugh DA, McNaught AI. Clinical comparison of semiconductor  
13 diode versus neodymium:YAG non-contact cyclophotocoagulation. *Br J Ophthalmol*  
14 1995;**79**:569–74.  
15
- 16 10. Pucci V, Tappainer F, Borin S. et al Longterm follow up after transscleral diode  
17 laser photocoagulation in refractory glaucoma. *Ophthalmologica* 2003; **217**:279–283.  
18
- 19 11. Grueb M, Rohrbach J M, Bartz et al Transscleral diode laser  
20 cyclophotocoagulation as primary and secondary surgical treatment in primary open  
21 angle and pseudoexfoliative glaucoma: Long term clinical outcomes. *Graefes Arch*  
22 *Clin Exp Ophthalmol* 2006; **244**:1293–1299.  
23
- 24 12. P Agrawal, S Dulku, W Nolan and V Sung. The UK National Cyclodiode Laser  
25 Survey. *Eye* 2011; **25**:168–173  
26
- 27 13. Walland MJ. Diode laser cyclophotocoagulation: longer term follow up of a  
28 standardized treatment protocol. *Clin Exp Ophthalmol* 2000; **28**:263–7.  
29
- 30 14. Murphy CC, Burnett CAM, Spry PDG, et al. A two centre study of the dose-  
31 response relation for transscleral diode laser cyclophotocoagulation in refractory  
32 glaucoma. *Br J Ophthalmol* 2003; **87**:1252–1257  
33
- 34 15. Chang SH, Chen YC, Li CY. Contact diode laser transscleral  
35 cyclophotocoagulation for refractory glaucoma: comparison of two treatment  
36 protocols. *Can J Ophthalmol* 2004; **39**:511–6.  
37
- 38 16. Nouredin BN, Zein W, Haddad C. Diode laser transcleral cyclophotocoagulation  
39 for refractory glaucoma: a 1 year follow-up of patients treated using an aggressive  
40 protocol. *Eye* 2006; **20**:329–35.  
41
- 42 17.Iliev ME, Gerber S. Long-term outcome of trans-scleral diode laser  
43 cyclophotocoagulation in refractory glaucoma. *Br J Ophthalmol* 2007; **91**:1631–1635.  
44
- 45 18. Bloom PA, Tsai JC, Sharma K, et al. Cyclodiode trans-scleral diode laser  
46 cyclophotocoagulation in the treatment of advanced refractory glaucoma.  
47 *Ophthalmology* 1997; **104**:1508–1520.  
48
- 49 19. Vernon SA, Koppens JM, Menon GJ, et al. Diode laser cycloablation in adult  
50 glaucoma:long-term results of a standard protocol and review of current literature.  
51 *Clin Exp Ophthalmol* 2006; **34**:411-20.  
52  
53  
54  
55  
56  
57  
58  
59  
60

- 1  
2  
3 20. Kosoko O, Gaasterland DE, Pollack IP. Long-term outcome of initial ciliary  
4 ablation with contact diode laser transscleral cyclophotocoagulation for severe  
5 glaucoma. The diode laser ciliary ablation study group. *Ophthalmology* 1996;  
6 **103**:1294–302.  
7  
8  
9 21. Gedde SJ, Schiffman JC, Feuer WJ, et al. Treatment outcomes in the tube versus  
10 trabeculectomy study after one year of follow-up. *Am J Ophthalmol* 2007; **143**(1):9-  
11 22.  
12  
13 22. Rotchford AP, Jayasawal R, Madhusudhan S, et al. Transscleral diode laser  
14 cycloablation in patients with good vision *Br J Ophthalmol* 2010; **94**:1180-1183  
15  
16 23. Youn J, Cox TA, Allingham RR. Factors associated with visual acuity loss after  
17 noncontact transscleral Nd:YAG cyclophotocoagulation. *J Glaucoma* 1996; **5**:390-94.  
18  
19 24. Wilensky JT, Kammer J. Long-term visual outcome of transscleral laser  
20 cyclotherapy in eyes with ambulatory vision. *Ophthalmology* 2004; **111**:1389-92.  
21  
22 25. Ansari E, Gandhewar J. Long-term efficacy and visual acuity following  
23 transscleral diode laser photocoagulation in cases of refractory and non-refractory  
24 glaucoma. *Eye* 2007; **21**:936-40.  
25  
26  
27  
28  
29  
30  
31  
32  
33  
34  
35  
36  
37  
38  
39  
40  
41  
42  
43  
44  
45  
46  
47  
48  
49  
50  
51  
52  
53  
54  
55  
56  
57  
58  
59  
60



# A Retrospective Analysis of Long Term Outcomes Following a Single Episode of Transscleral Cyclodiode Laser Treatment in Glaucoma Patients

Ivailo Zhekov MA<sup>1</sup>, Razia Janjua MA MRCOph<sup>1</sup>, Humma Shahid DM MA MRCOph<sup>1</sup>, Nicholas Sarkies MA MRCP MRCOph<sup>1</sup>, Keith R Martin DM MA MRCP FRCOph<sup>1,2</sup> and Andrew JR White FRANZCO PhD<sup>1,2+</sup>

1: Cambridge University Teaching Hospitals NHS Foundation Trust, Cambridge, UK

2: NIHR Biomedical Research Centre, University of Cambridge, UK

+: Current Address: Centre for Vision Research, Westmead Millennium Institute, Sydney Australia

**Objectives:** To investigate the efficacy of a single cyclodiode laser photocoagulation treatment for refractory glaucoma and its effect on visual outcome in patients with good visual potential as well as to evaluate possible predictive factors in establishing optimal treatment parameters.

**Design:** Retrospective observational study

**Setting:** Tertiary referral centre

**Participants:** The notes of 87 patients with refractory glaucoma who underwent cyclodiode photocoagulation as a first surgical intervention over a 7-year period.

**Main outcome measures:** Maintenance of intraocular pressure reduction, number of medications and visual acuity outcomes post-treatment.

**Results:** The mean intraocular pressure (IOP) after a single treatment decreased from 39.5 +/-1.3 mmHg to 17.8 +/-1.5 mmHg after a 6-week follow-up period (P<0.0001). This reduction in IOP was maintained over a 3-year period. Here 61.5% of the patients were able to reduce the number of medications used, with mean reduction from 2.6 to 1.5 medications (P<0.05). Mean initial visual field loss prior to treatment was 8.74dB and at 6 months post-treatment was measured at 9.06dB (P>0.05) suggesting no significant overall change. The visual acuity remained unchanged or improved for 83.6% of the patients (P>0.05) with relatively good visual potential (average vision preoperatively was 0.57 logMAR). Hypotony occurred in 5.3% of the patients. No patients required enucleation or evisceration.

**Conclusion:** A single session of cyclodiode laser therapy was associated with significant IOP reduction in the majority of the patients with refractory

1  
2  
3 **glaucoma.** The majority were able to maintain the IOP reduction over a 3-year period  
4 without the need for a further surgical intervention. Additionally, over 80% of the  
5 patients in our study were able to maintain their baseline visual acuity. These results  
6 support the view that a single cyclodiode treatment can be sufficient in achieving long  
7 term IOP control and may be considered in eyes with relatively good visual potential.  
8  
9

### 12 **Introduction:**

13 Transscleral diode laser cyclophotocoagulation (cyclodiode) has been established as a  
14 relatively safe and effective intervention for glaucoma.<sup>1-6</sup> Cyclodiode is often used in  
15 refractory glaucoma, where alternative surgical approaches, such as antiproliferative  
16 augmented trabeculectomy and tube shunt surgery, may sometimes be judged less  
17 appropriate, for example in eyes with poor visual potential. Additionally, cyclodiode  
18 has been shown to be safer than other cyclodestructive procedures, such as Nd:YAG  
19 laser cyclophotocoagulation and cyclocryotherapy, which present a greater risk of  
20 hypotony and phthisis resulting from excessive ciliary body ablation.<sup>7-9</sup> However, the  
21 outcome of cyclodiode therapy is unpredictable and multiple treatments may be  
22 required to achieve long term intraocular control.<sup>10-11</sup>  
23  
24  
25  
26  
27  
28  
29  
30  
31  
32  
33  
34  
35  
36  
37  
38

39 Currently there is no general consensus for an optimum treatment protocol for  
40 cyclodiode. Data for outcomes following cyclodiode laser vary considerably in the  
41 literature.<sup>12</sup> Parameters such as total delivered energy per eye, number of laser  
42 applications per treatment, pulse power, pulse duration and proportion of  
43 circumference treated have been analysed with varying results.<sup>13-17</sup> Furthermore,  
44 cyclodiode therapy has often been reserved for eyes with poor vision due to reports  
45 that it can lead to decrease in visual acuity.<sup>18</sup>  
46  
47  
48  
49  
50  
51  
52  
53  
54  
55  
56  
57  
58  
59  
60

1  
2  
3 The purpose of this study was to evaluate the long-term safety and efficacy of a single  
4 episode of transscleral diode laser cyclophotocoagulation for raised intraocular  
5 pressure in patients with good visual potential at a UK tertiary glaucoma referral  
6 centre. **The retrospective nature of the study design reflected the need to analyse  
7 multiple clinical variables and evaluate different types of outcomes as well as  
8 their progression over several years. Additionally, such a study could facilitate  
9 the identification predictive factors for optimal treatment parameters by  
10 investigating the relation of laser energy delivered and degrees treated to the  
11 long-term maintenance in IOP reduction.**  
12  
13  
14  
15  
16  
17  
18  
19  
20  
21  
22  
23  
24

### 25 **Methods:**

26  
27 The departmental electronic medical record system (Medisoft Ophthalmology,  
28 Medisoft Ltd Leeds UK) and operating theatre log books were examined for the  
29 period 09/2004 to 06/2011 to identify patients who had undergone cyclodiode  
30 treatment as a first surgical intervention.  
31  
32  
33  
34  
35  
36  
37  
38

39 All patients were assessed for their response to treatment and those who did not  
40 achieve the target IOP reduction were taken as treatment failures. The patients who  
41 required either repeat cyclodiode or alternative treatments for IOP control during the  
42 follow up period were also considered as treatment failures from the time of the  
43 additional surgical intervention. They were not further assessed for maintenance of  
44 post-operative IOP as any additional surgical interventions would interfere with the  
45 interpretation of the IOP maintenance data.  
46  
47  
48  
49  
50  
51  
52  
53  
54  
55  
56  
57  
58  
59  
60

1  
2  
3 Cyclophotocoagulation was performed in the Operating Theatre under subtenon,  
4 peribulbar or general anaesthesia using a standard treatment protocol. A lid speculum  
5 was placed to achieve adequate exposure for probe placement all around the limbus  
6 and a squint hook was used to rotate the globe to achieve exposure in those with  
7 narrow palpebral apertures. All treatments were performed using Oculight Sx  
8 semiconductor diode 810nm laser and the contact G Probe™ (IRIS Medical  
9 Instruments, Inc.). Standard settings were 1500ms duration and 1500mW power. The  
10 energy levels were not routinely titrated for ‘pops’ and the power settings were left at  
11 1500mW. Transillumination was performed for ciliary body identification. Usually 10  
12 applications were applied per quadrant for 180 to 360°, with the applications spaced  
13 approximately one-half width of the probe tip apart. The 3 and 9 o’clock positions  
14 were avoided to spare the long ciliary nerves. Postoperative steroid drops were used  
15 for 4 weeks. Glaucoma medications were continued after cyclodiode treatment and  
16 adjusted later as required.  
17  
18  
19  
20  
21  
22  
23  
24  
25  
26  
27  
28  
29  
30  
31  
32  
33  
34  
35

36 Success was defined as an intraocular pressure (IOP) of 6–21 mmHg at the last  
37 follow-up visit without the need for oral acetazolamide and an IOP reduction of at  
38 least 30% compared with pre-treatment. Hypotony was defined as an IOP of 5 mmHg  
39 or less. The laser energy used was classified as either low energy (median value 45  
40 +/- 11.47 J, range 22.5-67.5J) or high energy (median value 90 +/- 13.42 J, range  
41 67.5-130J). The follow up period in IOP measurements was 3 years. Visual acuity  
42 (VA) prior to treatment was assessed for all patients using LogMAR scale. Visual  
43 field testing was performed with the Humphrey Visual Field Analyser™ using the  
44 SITA 24-2 threshold programme. Mean deviation of visual field sensitivity loss in  
45 decibels (MD) was taken as our surrogate measure of visual field loss.  
46  
47  
48  
49  
50  
51  
52  
53  
54  
55  
56  
57  
58  
59  
60

Data was analysed using Microsoft Excel™ and where appropriate a Student's t-test was used to calculate p-values. R<sup>2</sup> values were derived from linear regression analyses using the same programme. Kaplan-Meier 'survival' analysis was done using GraphPad Prism 5.0™. Approval for the audit was granted by the Cambridge University Hospitals NHS Foundation Trust Ethics Committee. The tenets of the Declaration of Helsinki were observed.

## Results:

From our records, we were able to identify 104 patients who underwent cyclodiode therapy as a first surgical treatment modality in the period from 09/2004 to 06/2011 at Addenbrooke's Hospital, Cambridge. Of these, complete medical records were available for 87 patients with follow up data available for up to 3 years. Preoperative patient data is summarised in **Table 1**.

**Table 1.** Baseline demographics and clinical parameters

	Category	Cases (n=87)
Mean age, yrs		66.3
Sex (n (%))	Male	49 (56.3%)
	Female	38 (43.7%)
Preoperative VA, mean		0.57 LogMAR
IOP (mmHg), mean (SD)		39.5 +/- 1.3 mmHg
Mean number of glaucoma medications		2.6
Glaucoma type (n (%))	Primary open angle glaucoma (POAG)	33 (37.9%)
	Primary angle closure glaucoma (PACG)	6 (6.9%)
	Neovascular glaucoma	25 (28.7%)
	Uveitic glaucoma	5 (5.7%)
	Secondary open angle glaucoma (SOAG)- Other	18 (20.8%)

### Change in Intraocular Pressure (Fig.1A)

Mean intraocular pressure (IOP) decreased significantly from 39.5 mmHg (SE 1.26) before cyclodiode therapy to 17.8 mmHg (SE 1.51) at 6 weeks post-treatment, an observable reduction of 45.1 % ( $P < 0.0001$ ). There was a mild linear correlation between preoperative IOP and observed IOP reduction ( $R^2 = 0.32$ ).

### Safety and Efficacy of Cyclodiode Treatment (Fig.1B)

An IOP reduction greater than 30% of initial IOP was achieved at 6 weeks in 67.7 % of the patients, while hypotony occurred in only 5 cases or 5.3% of patients ( $p < 0.05$ ). None of the patients experienced post-treatment uveitis or required further treatment or enucleation for pain symptoms. The data for the patients who developed hypotony such as initial diagnosis, treatment settings, IOP measurements and VA outcome is summarised in **Table 2**.

**Table 2.** Details of hypotony patients

	Diagnosis	Energy used	Degrees treated	Peak IOP (mmHg)	Postop IOP (mmHg)	Hypotony duration	Last IOP (mmHg)	Preop VA (LogMAR)	Last VA (LogMAR)
PT1	Neovascular	90J	180	58	2	6 months	10	0.78	PL
PT2	Neovascular	90J	360	41	4	6 months	32	PL	NPL
PT3	Neovascular	120J	360	40	2	6 months	9	0.6	HM
PT4	SOAG(other)	120J	360	26	3	6 months	8	1.0	CF
PT5	SOAG(other)	120J	360	48	2	-	3	HM	HM

### Long term maintenance of IOP reduction after a single cyclodiode treatment

(Fig.1C)

The IOP reduction was maintained long term over the period of 3 years in the majority of our patients. Measurements were taken pre-operatively (39.5+/-1.3 mmHg) as well as post-operatively at 6 weeks (17.8+/-1.5 mmHg) and 6 months

1  
2  
3 (19.6±1.5 mmHg) for all patients. Patients who required additional procedures in  
4 that eye post-treatment were excluded from further analysis from the time point of  
5 additional intervention as it would artificially lower their IOP measurements. The  
6 follow-up measurements at 1 year (18.9 mmHg), 2 year (22.1 mmHg) and 3 years  
7 (21.7 mmHg) were all after a single cyclodiode treatment.  
8  
9  
10  
11  
12

### 13 14 15 16 **Kaplan-Meier analysis of IOP reduction ‘survival’ following a single cyclodiode** 17 **treatment (Fig.2)** 18 19

20  
21 Success was defined as an intraocular pressure (IOP) of 6–21 mmHg at the last follow  
22 up visit without the need for oral acetazolamide and an IOP reduction of at least 30%  
23 compared with preoperatively. The proportion of patients to maintain the desired IOP  
24 reduction after a single cyclodiode treatment without the need for further IOP  
25 lowering intervention in our study was 67.7% at 6 weeks post-operatively, 66.2% at 6  
26 months, 63% at 1 year, 61.2% at 2 years and 61.2% at 3 years. Of the patients who  
27 responded to treatment at 6 weeks, 90.4% were able to maintain the IOP reduction  
28 over a period of 3 years.  
29  
30  
31  
32  
33  
34  
35  
36  
37  
38  
39

### 40 41 **Cyclodiode effect on glaucoma medications (Fig.3A)** 42

43 A significant proportion of the patients (61.5%) were able to decrease the number of  
44 medications they are taking for IOP control following cyclodiode. A decrease of 2  
45 medications or more was achieved by 34.6% of patients, while 26.9% of patients  
46 decreased their medication by one. Overall, the average number of medications  
47 decreased from 2.6 before cyclodiode treatment to 1.5 medications after cyclodiode  
48 treatment (P<0.05).  
49  
50  
51  
52  
53  
54  
55  
56  
57  
58  
59  
60

**Change in visual acuity (Fig.3B)**

A single episode of cyclodiode treatment had no significant effect on visual acuity (VA). Mean VA measurements changed from 0.5720 Log MAR units before cyclodiode therapy to 0.5408 Log MAR units post treatment, which was not statistically significant ( $P>0.05$ ). The data analysis was performed on 47 patients (54.1%), who had clearly annotated numerical values for their VA measurements both preoperatively and postoperatively. The boxed numerals in the graph represent the number of values at the same point.

**Change in visual fields (Fig.3C)**

The average visual field sensitivity remained almost unchanged with an average MD value of -8.74 dB pre-treatment compared to MD value of -9.05 dB at 6 months post-treatment, which was not statistically significant ( $P>0.05$ ). The data analysis was performed on 36 patients (41.3%), who had clearly annotated numerical values for their visual fields measurements both pre-operatively and post-operatively.

**Effect of laser energy on IOP reduction (Fig.4A)**

Of the patients that received high energy treatment (90J), 80.3% obtained pressure reduction of  $>30\%$  of initial IOP compared with 56.8% in the patients that received low energy treatment (45J).

**Effect of laser energy on visual acuity (Fig.4B)**

Of the patients that received high energy treatment (90J), 18.6% noted improvement of the equivalent of at least 1 Snellen line compared with 6.7% in the patients that received low energy treatment.



**Effect of degrees treated on IOP reduction (Fig.4C)**

Of the patients that underwent 360 degrees treatment, 71.4% obtained pressure reduction greater than 30% of initial IOP compared with 55% of the patients that underwent 180 degree treatment.

**Effect of degrees treated on visual acuity (Fig.4D)**

Of the patients that underwent 360 degrees treatment, 20.9% noted improvement of the equivalent of at least 1 Snellen line compared with 5.5% of the patients underwent 180 degree treatment.

**Discussion:**

The results of this retrospective analysis are supportive of a single cyclodiode treatment being effective in management of refractory glaucoma. Although this is a retrospective rather than a prospective study, we aimed to avoid selection bias by including all patients either as success or failure of treatment. The patients who required additional surgical interventions were taken as failure from the time of additional intervention.

Our data show that 67.7% of the patients achieved an IOP reduction greater than 30% of presenting IOP at 6 weeks and 61.5% could reduce the number of medications by at least 1. Hypotony appears to be related to the type of glaucoma (with neovascular glaucoma associated with worse outcome) as well as to the number of degrees treated and total energy used. Indeed, the patients with neovascular glaucoma in our cohort

1  
2  
3 were almost 4 times more likely to develop hypotony compared to any other types of  
4  
5 glaucoma.  
6  
7

8  
9  
10 In our patients, the mean intraocular pressure (IOP) decreased significantly from 39.5  
11 mmHg (SE 1.26) before cyclodiode therapy to 17.8 mmHg (SE 1.51) at 6 weeks post-  
12 treatment, an observable reduction of 45.1 % ( $P<0.05$ ). The results of the linear  
13 regression analysis indicate that there might be some predictive value in determining  
14 IOP reduction based on initial IOP measurements such as the greatest reduction in  
15 IOP is likely to be seen in patients with the highest IOP at the time of treatment ( $R^2 =$   
16 0.32). A similar relationship was reported by Vernon et al., where eyes with IOP  
17 greater than 30 mmHg were more likely to exhibit a pressure drop greater than 30%  
18 of initial IOP.<sup>19</sup>  
19  
20  
21  
22  
23  
24  
25  
26  
27  
28  
29

30  
31  
32 The IOP reduction was maintained long term in 61.2% of all patients in our study  
33 after a single cyclodiode treatment. Of the patients who responded to treatment at 6  
34 weeks, 90.4% were able to maintain the IOP reduction over a period of 3 years.  
35  
36 Similar sustainability of the mean IOP reduction postoperatively is also reported by  
37 Bloom et al. and Kosoko et al., although in both these studies the follow up was  
38 considerably shorter, the average time being less than 2 years.<sup>18,20</sup> The results from  
39 our patient cohort suggest that a single session of cyclodiode therapy could potentially  
40 be a viable initial treatment modality for maintaining a longer term IOP control in  
41 patients with refractory glaucoma.  
42  
43  
44  
45  
46  
47  
48  
49  
50  
51

52  
53  
54 In our study, of the patients that received high energy treatment (90J), 80.3% obtained  
55 an IOP reduction of greater than 30% of the initial IOP compared with 56.8% in the  
56  
57  
58  
59  
60

1  
2  
3 patients receiving low energy treatment (45J). This is consistent with a meta-analysis  
4  
5 by Iliev et al., where comparing different laser protocols from different studies  
6  
7 suggested that the use of a low energy protocol potentially could result in the lowest  
8  
9 IOP reduction, the highest postoperative IOP and the highest retreatment rate  
10  
11 overall.<sup>17</sup> We also observed similar relationship when patients were assessed in regard  
12  
13 to the degrees treated rather than energy used. Here, of the patients that underwent  
14  
15 360 degrees treatment, 71.4% obtained pressure reduction greater than 30% of initial  
16  
17 IOP compared with 55% of the patients that underwent 180 degrees treatment.  
18  
19

20  
21  
22 Hypotony was the most common long-term complication in our study (5.3%), which  
23  
24 is in accordance with other published reports.<sup>14</sup> In our cohort, the incidence of  
25  
26 hypotony was much more likely with an eye with neovascular glaucoma (**Table 2**).  
27  
28 Murphy et al. also found a higher risk of hypotony in eyes with neovascular  
29  
30 glaucoma, particularly if preoperative IOP was high and energy level used was  
31  
32 greater.<sup>14</sup> This correlation between hypotony and higher energy used in cyclodiode is  
33  
34 also observed in several other studies.<sup>12</sup> However, univariate regression analysis done  
35  
36 by Murphy et al. shows that very high pre-treatment IOP alone, possibly causing  
37  
38 ciliary body ischaemia, could be responsible for the high incidence of hypotony in the  
39  
40 patients receiving high-energy treatment in their study.<sup>14</sup>  
41  
42  
43  
44  
45  
46

47  
48 Additionally, in a retrospective analysis of 209 eyes by Bloom et al., a very low  
49  
50 incidence of hypotony (1%) was observed with a high energy protocol when the mean  
51  
52 energy used was 90J.<sup>18</sup> Furthermore, Iliev et al. report in their study that eyes  
53  
54 developing hypotony had not received higher energies compared with eyes that  
55  
56 maintained normal IOP.<sup>17</sup> Therefore, the intention to reduce hypotony risk by using a  
57  
58  
59  
60

1  
2  
3 lower laser power and fewer applications per treatment should be weighed against the  
4  
5 possibility for a lower efficacy of the cyclodiode treatment.  
6  
7

8  
9  
10 Visual acuity (VA) remained unchanged for the majority of our patients who  
11  
12 underwent cyclodiode treatment (69.9%). In our study 16.4% reported deterioration in  
13  
14 VA of 1 Snellen line, while 13.7% of the patients reported an improvement in VA of  
15  
16 1 Snellen line after 6 weeks. The latter probably resulted either from resolution of  
17  
18 preoperative corneal oedema or inter-observer variation in visual acuity testing.  
19  
20 Similar results are also reported in a study by Murphy et al., where the VA remained  
21  
22 the same in 74.6% of the patients at 6 months following cyclodiode treatment.<sup>14</sup> In  
23  
24 our study most patients with difficult to manage glaucoma retained their good VA in  
25  
26 the long-term following cyclodiode treatment. The proportion losing two Snellen lines  
27  
28 is actually better than that reported after trabeculectomy or tube surgery.<sup>21</sup> These  
29  
30 results suggest a possible role for the use of transscleral cyclodiode treatment in eyes  
31  
32 with relatively good visual potential, however, further controlled prospective studies  
33  
34 would be required to better define this role.  
35  
36  
37  
38  
39

40  
41 This study is the first to measure the mean deviation (MD) values for the patients both  
42  
43 pre-operatively and post-operatively in order to provide a more objective assessment  
44  
45 of glaucoma related visual loss. The MD values in our patients remained virtually  
46  
47 unchanged after cyclodiode treatment from -8.74dB preoperatively to -9.05 dB  
48  
49 postoperatively. Previously it has been reported that the most frequent cause of visual  
50  
51 loss was further progression of glaucoma, which was an attributable cause in over half  
52  
53 of the cases.<sup>22</sup> The peri-operative visual field assessment presented in this study  
54  
55 suggests that the maintenance of VA observed in the majority of the patients  
56  
57  
58  
59  
60

1  
2  
3 following cyclodiode treatment could be due to a good postoperative IOP control.  
4  
5 There are no previous retrospective or prospective studies evaluating visual field  
6  
7 measurements peri-operatively in patients undergoing cyclodiode treatment and this  
8  
9 most likely reflects the difficulties associated with performing the tests in patients  
10  
11 with poor VA. Our study therefore is the first to provide a standardised measurable  
12  
13 evidence of maintenance of patients' visual fields as a marker of glaucoma  
14  
15 progression following a single cyclodiode treatment. Our study's main limitations are  
16  
17 its retrospective nature and the absence of a control group to distinguish the adverse  
18  
19 effects of the treatment from the natural history of the underlying disease.  
20  
21  
22  
23

24  
25 The results of this study suggest that the IOP reduction after cyclodiode treatment  
26  
27 could potentially prevent further deterioration in the glaucoma patients' vision.  
28  
29 Currently, according to the UK National Cyclodiode Survey Study only 60% of  
30  
31 practitioners would perform cyclodiode procedure in the presence of good visual  
32  
33 acuity.<sup>12</sup> Until recently, cyclodiode treatment has been associated with subsequent  
34  
35 loss of VA in significant percentage of the patients.<sup>18,23,24</sup> However, cyclodiode use in  
36  
37 eyes with useful vision has already been proposed in several studies.<sup>19,22-25</sup>  
38  
39 Furthermore, the risk of VA loss in patients after multiple cyclodiode treatments does  
40  
41 not appear to be any greater than that after any other surgical modality used for  
42  
43 treating patients with glaucoma as reported in a study by Rotchford et al.<sup>24</sup>  
44  
45  
46  
47  
48

49  
50 In our study, the better outcome in visual acuity was most pronounced in the high  
51  
52 energy group, probably due to the more effective IOP control. Of the patients that  
53  
54 received high energy treatment (90J), 18.6% noted improvement of at least 1 Snellen  
55  
56 line compared with 6.7% in the patients that received low energy treatment (45J).  
57  
58  
59  
60

1  
2  
3 Similar results are observed when patients were assessed in regard to the degrees  
4 treated. Here, of the patients that underwent 360 degrees treatment, 20.9% noted  
5 improvement of the equivalent of at least 1 Snellen line compared with 5.5% of the  
6 patients underwent 180 degrees treatment.  
7  
8  
9  
10

11  
12  
13  
14 **In conclusion, conventional diode cyclophotocoagulation is characterised by low**  
15 **incidence of complications and therefore appears to be a safe and effective**  
16 **treatment for refractory glaucoma. In our study the IOP pressure was effectively**  
17 **reduced in glaucoma patients after a single cyclodiode treatment without adverse**  
18 **effects on VA in the majority of the patients over a 3 year period. Hypotony**  
19 **seems to be the main risk of treatment and could be limited by reducing the laser**  
20 **energy applied to less than 90J, particularly in the patients with neovascular**  
21 **glaucoma.**  
22  
23  
24  
25  
26  
27  
28  
29  
30  
31  
32  
33

#### 34 **Figure and Table Legends**

35  
36  
37 **Figure 1 (A)** Change in Intraocular Pressure following a single Cyclodiode treatment  
38 **(B)** Safety and Efficacy of Cyclodiode Treatment **(C)** IOP reduction was maintained  
39 long-term over the period of 3 years after single treatment  
40  
41  
42  
43  
44  
45

46 **Figure 2** Kaplan-Meier analysis for cumulative proportion of success in IOP control  
47 after a single Cyclodiode treatment. Survival was defined as sustained IOP drop of at  
48 least 30% compared with pre-treatment or sustained intraocular pressure (IOP) of 6–  
49 21 mmHg without the need for additional IOP lowering medications or further  
50 surgical interventions.  
51  
52  
53  
54  
55  
56  
57  
58  
59  
60

1  
2  
3 **Figure 3 (A)** Cyclodiode effect on antiglaucoma medications **(B)** Preoperative and  
4 postoperative visual acuity measurements in LogMAR units after a single Cyclodiode  
5 treatment **(C)** Preoperative and postoperative visual field loss taken from MD values  
6 (dB) on the HVF analyser after a single Cyclodiode treatment  
7  
8  
9  
10

11  
12  
13  
14 **Figure 4 (A)** Effect of laser energy on IOP reduction **(B)** Effect of laser energy on  
15 visual acuity (VA) **(C)** Effect of degrees treated on IOP reduction **(D)** Effect of  
16 degrees treated on visual acuity (VA)  
17  
18  
19

20  
21  
22  
23 **Table 1** Baseline demographics of the patients and clinical parameters including  
24 diagnostic features, pre-operative IOP and visual acuity assessments.  
25  
26  
27

28  
29  
30 **Table 2** Details of the patients who developed hypotony including diagnostic and  
31 treatment features, peri-operative IOP assessments and duration of hypotony  
32  
33  
34

### 35 36 37 **References**

- 38  
39  
40 1. Hennis HL, Stewart WC. Semiconductor diode laser transscleral  
41 cyclophotocoagulation in patients with glaucoma. *Am J Ophthalmol* 1992;**113**:81–5.  
42  
43 2. Hawkins TA, Stewart WC. One-year results of semiconductor transscleral  
44 cyclophotocoagulation in patients with glaucoma. *Arch Ophthalmol* 1993;**111**:488–  
45 91.  
46  
47 3. Brancato R, Carassa RG, Bettin P. Contact transscleral cyclophotocoagulation with  
48 diode laser in refractory glaucoma. *Eur J Ophthalmol* 1995;**5**:32–9.  
49  
50 4. Threlkeld AB, Johnson MH. Contact transscleral diode cyclophotocoagulation for  
51 refractory glaucoma. *J Glaucoma* 1999;**8**:3–7.  
52  
53 5. Egbert PR, Fiadoyor S, Budenz DL. Diode laser transscleral cyclophotocoagulation  
54 as a primary surgical treatment for primary open angle glaucoma. *Arch Ophthalmol*  
55 2001;**119**:345–50.  
56  
57  
58  
59  
60

- 1  
2  
3 6.Mistlberger A, Liebmann JM, Tschiderer H. Diode laser transscleral  
4 cyclophotocoagulation for refractory glaucoma. *J Glaucoma* 2001;**10**:288–93.
- 5  
6  
7 7. Benson MT, Nelson ME. Cyclocryotherapy: a review of cases over a 10-year  
8 period. *Br J Ophthalmol* 1990;**74**:103–5.
- 9  
10 8.Schuman JS, Bellows AR, Shingleton BJ. Contact transscleral Nd:YAG laser  
11 cyclophotocoagulation. *Ophthalmology* 1992;**99**:1089–94.
- 12  
13 9. Ulbig MW, McHugh DA, McNaught AI. Clinical comparison of semiconductor  
14 diode versus neodymium:YAG non-contact cyclophotocoagulation. *Br J Ophthalmol*  
15 1995;**79**:569–74.
- 16  
17 10. Pucci V, Tappainer F, Borin S. et al Longterm follow up after transscleral diode  
18 laser photocoagulation in refractory glaucoma. *Ophthalmologica* 2003; **217**:279–283.
- 19  
20 11. Grueb M, Rohrbach J M, Bartz-Schmidt K U. et al Transscleral diode laser  
21 cyclophotocoagulation as primary and secondary surgical treatment in primary open  
22 angle and pseudoexfoliative glaucoma: Long term clinical outcomes. *Graefes Arch*  
23 *Clin Exp Ophthalmol* 2006; **244**:1293–1299.
- 24 12. P Agrawal, S Dulku, W Nolan and V Sung. The UK National Cyclodiode Laser  
25 Survey. *Eye* 2011; **25**:168–173
- 26  
27 13. Walland MJ. Diode laser cyclophotocoagulation: longer term follow up of a  
28 standardized treatment protocol. *Clin Exp Ophthalmol* 2000; **28**:263–7.
- 29  
30 14. Murphy CC, Burnett CAM, Spry PDG, Broadway DC, Diamond JP. A two centre  
31 study of the dose-response relation for transscleral diode laser cyclophotocoagulation  
32 in refractory glaucoma. *Br J Ophthalmol* 2003; **87**:1252–1257
- 33  
34 15. Chang SH, Chen YC, Li CY. Contact diode laser transscleral  
35 cyclophotocoagulation for refractory glaucoma: comparison of two treatment  
36 protocols. *Can J Ophthalmol* 2004; **39**:511–6.
- 37  
38 16. Nouredin BN, Zein W, Haddad C. Diode laser transcleral cyclophotocoagulation  
39 for refractory glaucoma: a 1 year follow-up of patients treated using an aggressive  
40 protocol. *Eye* 2006; **20**:329–35.
- 41  
42 17.Iliev ME, Gerber S. Long-term outcome of trans-scleral diode laser  
43 cyclophotocoagulation in refractory glaucoma. *Br J Ophthalmol* 2007; **91**:1631–1635.
- 44  
45 18. Bloom PA, Tsai JC, Sharma K, Miller MH, Rice NS, Hitchings RA. Cyclodiode  
46 trans-scleral diode laser cyclophotocoagulation in the treatment of advanced  
47 refractory glaucoma. *Ophthalmology* 1997; **104**:1508–1520.
- 48  
49 19. Vernon SA, Koppens JM, Menon GJ, Negi AK. Diode laser cycloablation in adult  
50 glaucoma:long-term results of a standard protocol and review of current literature.  
51 *Clin Exp Ophthalmol* 2006; **34**:411-20.
- 52  
53  
54  
55  
56  
57  
58  
59  
60



- 1  
2  
3 20. Kosoko O, Gaasterland DE, Pollack IP. Long-term outcome of initial ciliary  
4 ablation with contact diode laser transscleral cyclophotocoagulation for severe  
5 glaucoma. The diode laser ciliary ablation study group. *Ophthalmology* 1996;  
6 **103**:1294–302.  
7  
8  
9 21. Gedde SJ, Schiffman JC, Feuer WJ, Herndon LW, Brandt JD, Budenz DL.  
10 Treatment outcomes in the tube versus trabeculectomy study after one year of follow-  
11 up. *Am J Ophthalmol* 2007; **143**(1):9-22.  
12  
13 22. Rotchford AP, Jayasawal R, Madhusudhan S, Ho S, King AJ, Vernon SA.  
14 Transscleral diode laser cycloablation in patients with good vision *Br J Ophthalmol*  
15 2010; **94**:1180-1183  
16  
17 23. Youn J, Cox TA, Allingham RR. Factors associated with visual acuity loss after  
18 noncontact transscleral Nd:YAG cyclophotocoagulation. *J Glaucoma* 1996; **5**:390-94.  
19  
20 24. Wilensky JT, Kammer J. Long-term visual outcome of transscleral laser  
21 cyclotherapy in eyes with ambulatory vision. *Ophthalmology* 2004; **111**:1389-92.  
22  
23 25. Ansari E, Gandhewar J. Long-term efficacy and visual acuity following  
24 transscleral diode laser photocoagulation in cases of refractory and non-refractory  
25 glaucoma. *Eye* 2007; **21**:936-40.  
26  
27  
28  
29  
30  
31  
32  
33  
34  
35  
36  
37  
38  
39  
40  
41  
42  
43  
44  
45  
46  
47  
48  
49  
50  
51  
52  
53  
54  
55  
56  
57  
58  
59  
60

1  
2  
3  
4  
5  
6  
7  
8  
9  
10  
11  
12  
13  
14  
15  
16  
17  
18  
19  
20  
21  
22  
23  
24  
25  
26  
27  
28  
29  
30  
31  
32  
33  
34  
35  
36  
37  
38  
39  
40  
41  
42  
43  
44  
45  
46  
47  
48  
49  
50  
51  
52  
53  
54  
55  
56  
57  
58  
59  
60

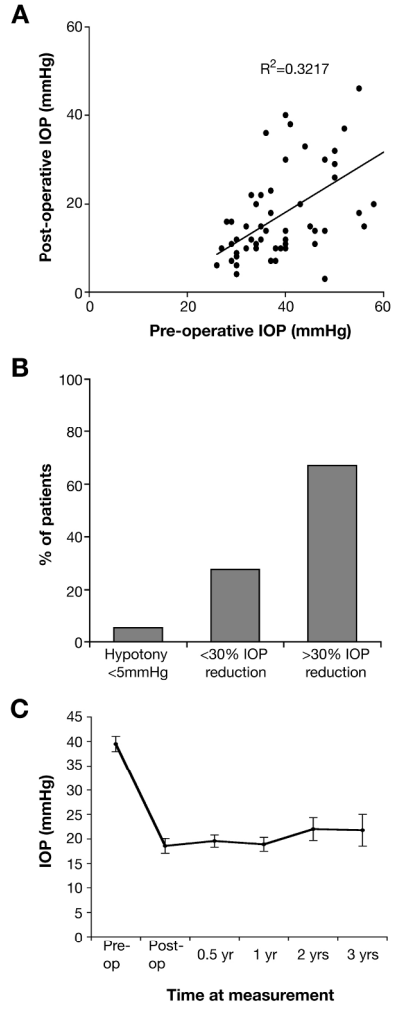
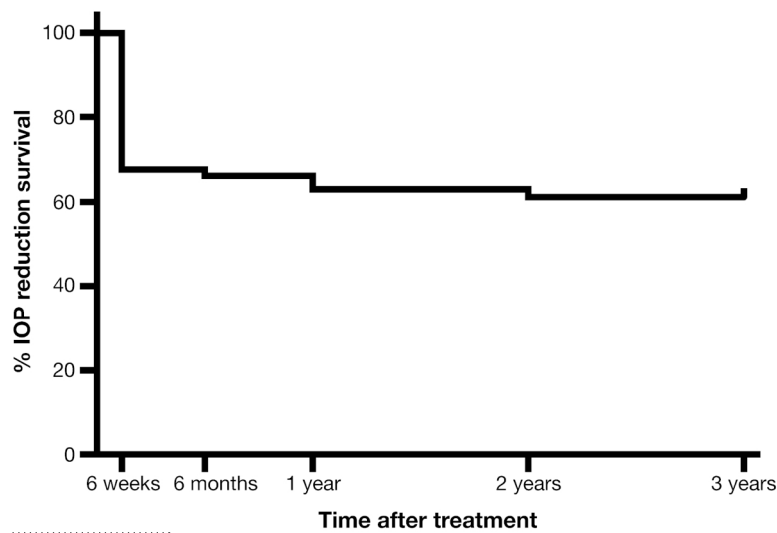


Figure 1

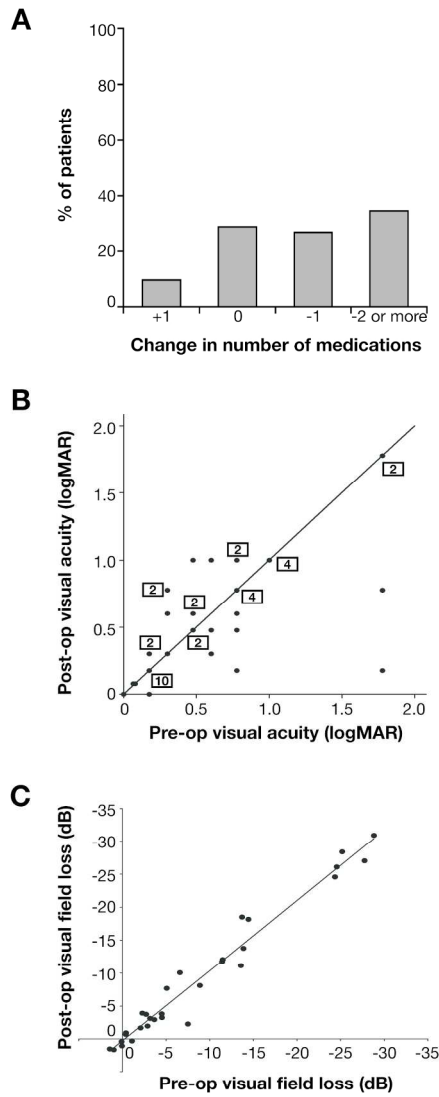
Figure 1 (A) Change in Intraocular Pressure following a single Cyclodiode treatment (B) Safety and Efficacy of Cyclodiode Treatment (C) IOP reduction was maintained long-term over the period of 3 years after single treatment  
135x262mm (300 x 300 DPI)



**Figure 2**

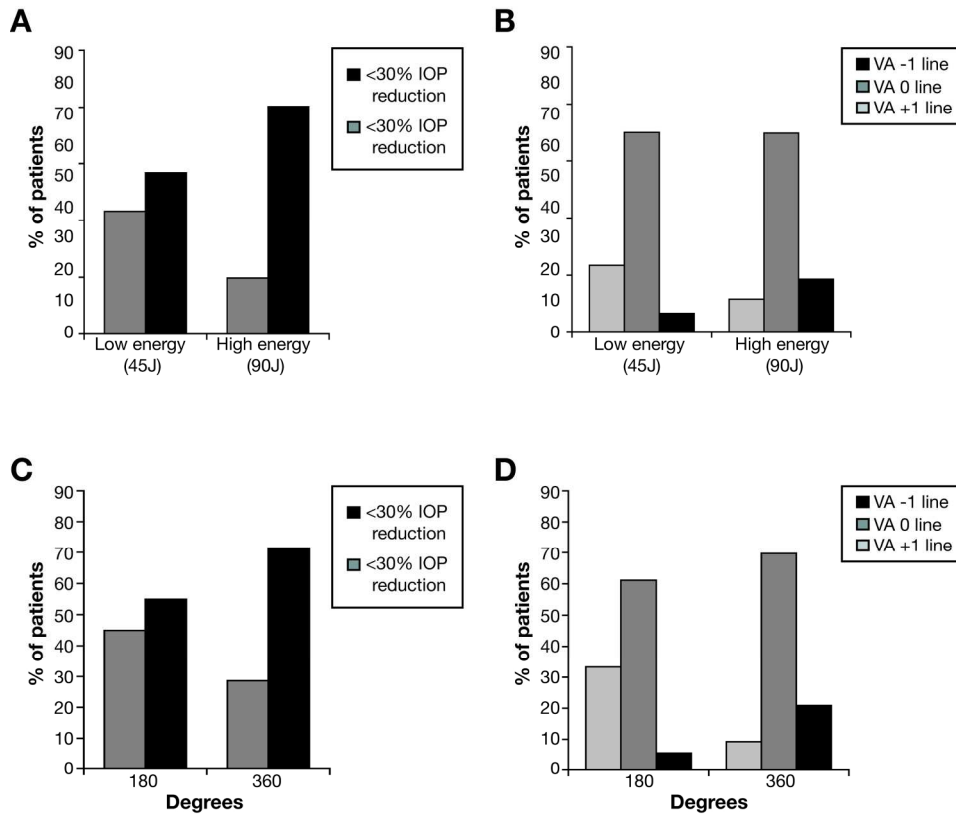
Figure 2 Kaplan-Meier analysis for cumulative proportion of success in IOP control after a single Cyclodiode treatment. Survival was defined as sustained IOP drop of at least 30% compared with pre-treatment or sustained intraocular pressure (IOP) of 6–21 mmHg without the need for additional IOP lowering medications or further surgical interventions.  
157x184mm (300 x 300 DPI)

1  
2  
3  
4  
5  
6  
7  
8  
9  
10  
11  
12  
13  
14  
15  
16  
17  
18  
19  
20  
21  
22  
23  
24  
25  
26  
27  
28  
29  
30  
31  
32  
33  
34  
35  
36  
37  
38  
39  
40  
41  
42  
43  
44  
45  
46  
47  
48  
49  
50  
51  
52  
53  
54  
55  
56  
57  
58  
59  
60



**Figure 3**

Figure 3 (A) Cyclodiode effect on antiglaucoma medications (B) Preoperative and postoperative visual acuity measurements in LogMAR units after a single Cyclodiode treatment (C) Preoperative and postoperative visual field loss taken from MD values (dB) on the HVF analyser after a single Cyclodiode treatment 171x234mm (300 x 300 DPI)



**Figure 4**

Figure 4 (A) Effect of laser energy on IOP reduction (B) Effect of laser energy on visual acuity (VA) (C) Effect of degrees treated on IOP reduction (D) Effect of degrees treated on visual acuity (VA)  
 175x216mm (300 x 300 DPI)