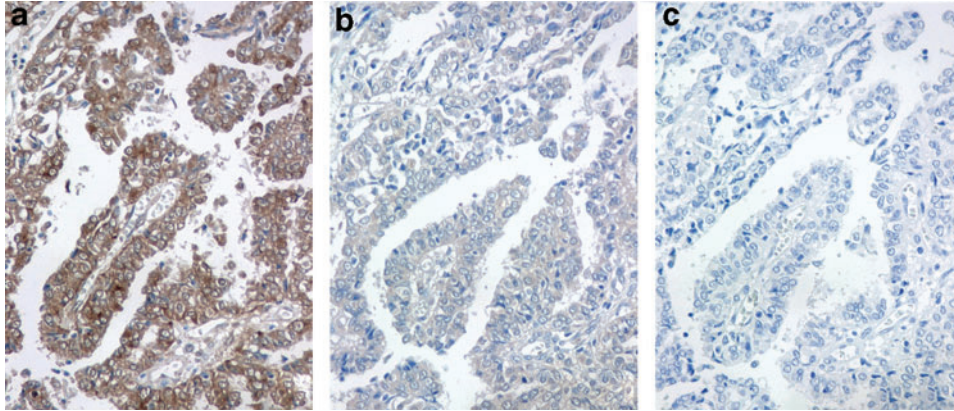


Supplementary Data



SUPPLEMENTARY FIG. S1. Antibody specificity testing in serial sections of PTC tissue, $\times 600$. **(a)** Intense FOXE1 staining by the unblocked antibody (1:50). **(b)** Partial loss of specific staining in the presence of 2 mg/mL of blocking peptide. **(c)** Complete absence of FOXE1 staining following antibody pre-adsorption with 5 mg/mL of blocking peptide.