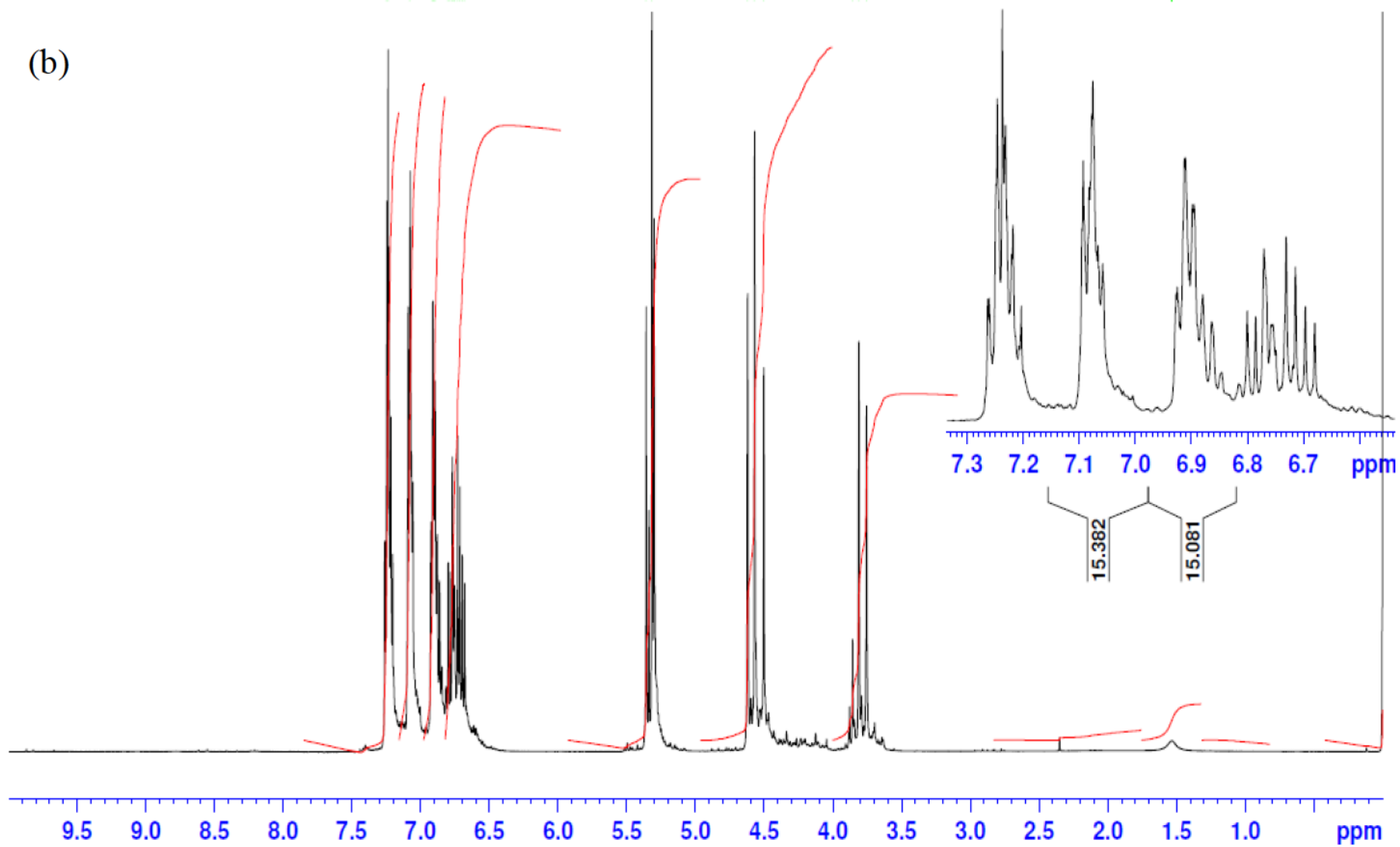


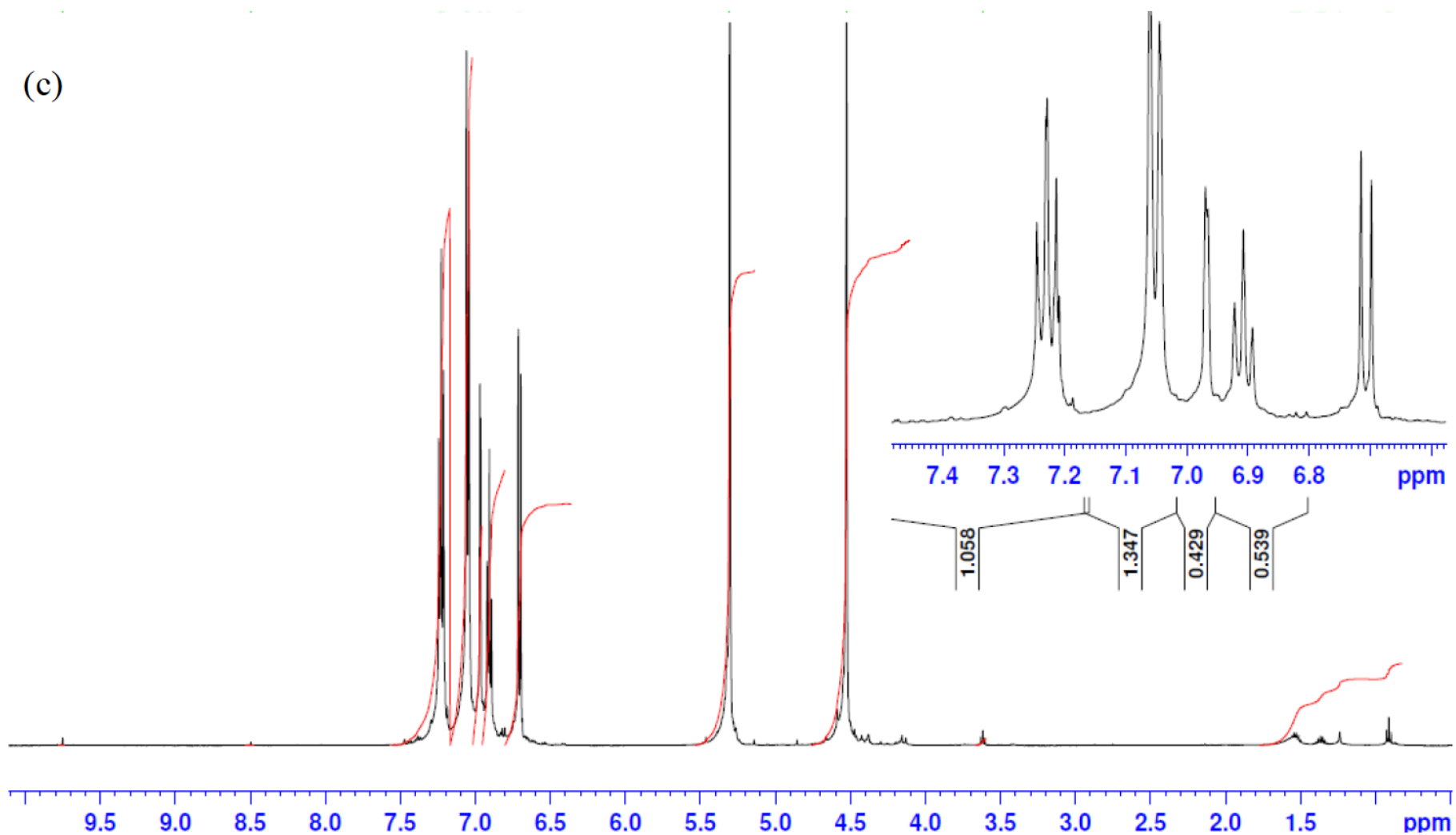
¹H NMR Spectrum (500 MHz, CDCl₃, 298 K) of BA-a (expansion showing aromatic region)

(b)



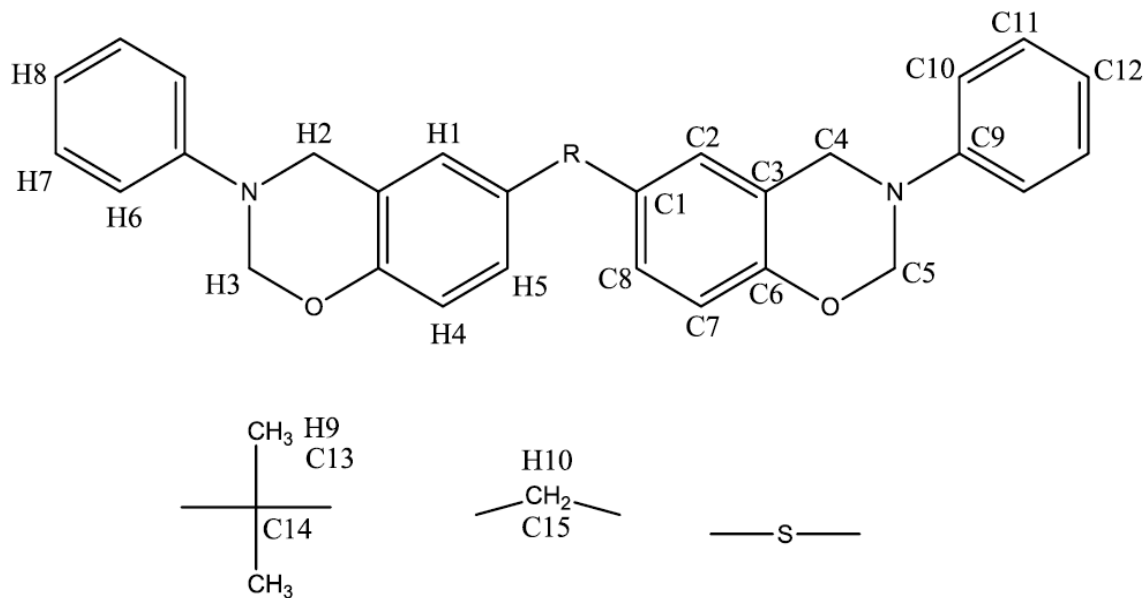
¹H NMR Spectrum (500 MHz, CDCl₃, 298 K) of BF-a (expansion showing aromatic region)

(c)



¹H NMR Spectrum (500 MHz, CDCl₃, 298 K) of BT-a (expansion showing aromatic region)

NMR spectral assignments for BA-a, BF-a and BT-a. Only peaks that could be assigned have been included, some not possible to assign due to interference from unknown contaminants.



| Proton | H1 | H2 | H3 | H4 | H5 | H6 | H7 | H8 | H9 | H10 | | | | | |
|---------------|-----------|-----------|-----------|-----------|-----------|-----------|-----------|-----------|-----------|------------|------------|------------|------------|------------|------------|
| <i>BA-a</i> | 6.83 (s) | 5.32 (s) | 4.57 (s) | 6.71 (d) | 6.95 (d) | 6.95 (d) | 7.24 (t) | 7.08 (t) | 1.61 (s) | - | | | | | |
| <i>BF-a</i> | 6.8-6.93 | 5.33 (s) | 4.57 (s) | 6.68-6.79 | 6.8-6.93 | 6.8-6.93 | 7.20-7.22 | 7.06-7.10 | - | 3.76 (s) | | | | | |
| <i>BT-a</i> | 6.85 | 5.23 (s) | 4.54 (s) | 6.71 (d) | 6.949 | 6.925 (d) | 7.22 (t) | 7.07 | - | - | | | | | |
| Carbon | C1 | C2 | C3 | C4 | C5 | C6 | C7 | C8 | C9 | C10 | C11 | C12 | C13 | C14 | C15 |
| <i>BA-a</i> | 143.24 | 126.40 | 124.77 | 79.13 | 50.70 | 152.21 | 116.39 | 121.21 | 148.52 | 120.09 | 129.27 | 118.03 | 41.80 | 31.08 | - |
| <i>BF-a</i> | 135.17? | 125.06 | 124.78 | 79.50 | 51.00 | 152.25 | 116.85 | 121.50 | 148.49 | 120.66 | 129.49 | 118.50 | - | - | 34.74 |
| <i>BT-a</i> | 131.21? | | 127.37 | 79.59 | 50.04 | 153.87 | 117.92 | 121.70 | 148.21 | | 129.74 | 118.34 | - | - | - |