

Supplemental Data

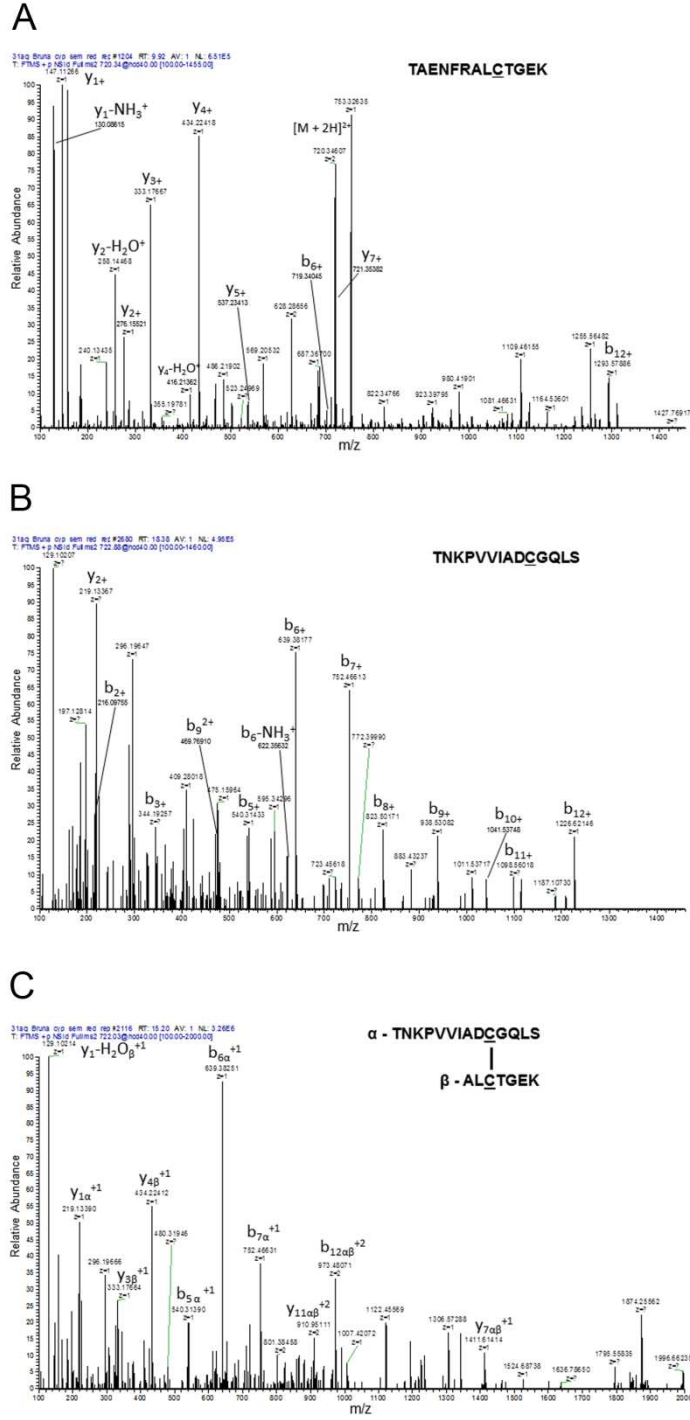


Figure S1: The conserved cysteines, C40 and C168, form a disulfide bond. Fragment ion spectra of reduced (A,B) and cross-linked (C) peptides. The MS/MS spectra were manually validated for b and y ion series for reduced peptides and for the α and β chains of oxidized peptides.

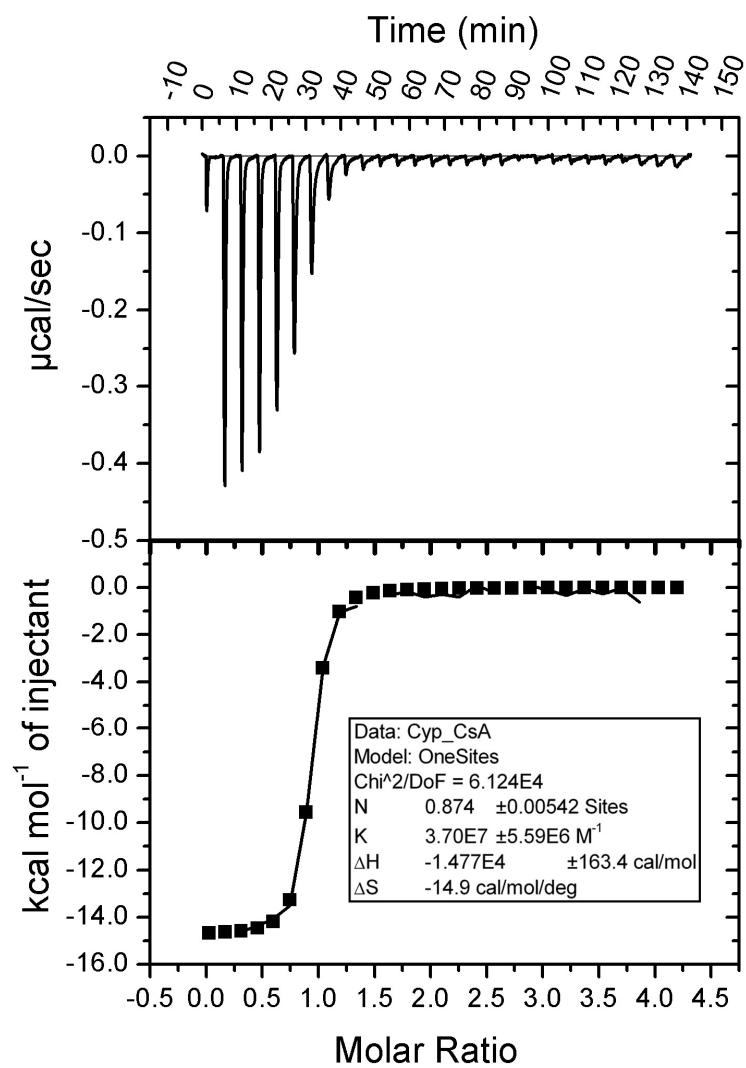


Figure S2: Interaction of CsCyp with CsA assessed by isothermal calorimetry, showing the raw injection heats (upper panel) and integrated data (lower panel) fit to a single site binding model.